

**DISK HARROWS**

**GDC 36D - 3P/PY - AXLE 1.1/4"**  
**GDC 36D - 3P/PY - EIXO 1.1/4"**

**Code:** 0501099055  
**Series:** S-0222  
**Revision:** 00  
**Revision Date:** JUNE/2024

**PARTS**  
**CATALOGUE**

***CIVEMASA***

A solid orange rectangular bar is positioned at the top left of the page, above the "PRODUCTS" heading.

# PRODUCTS

Code	Working Width	Description
0120720200		GDC 36 X 22 X 4,50 DR DMO 3P PY E 1.1/4 S-0222

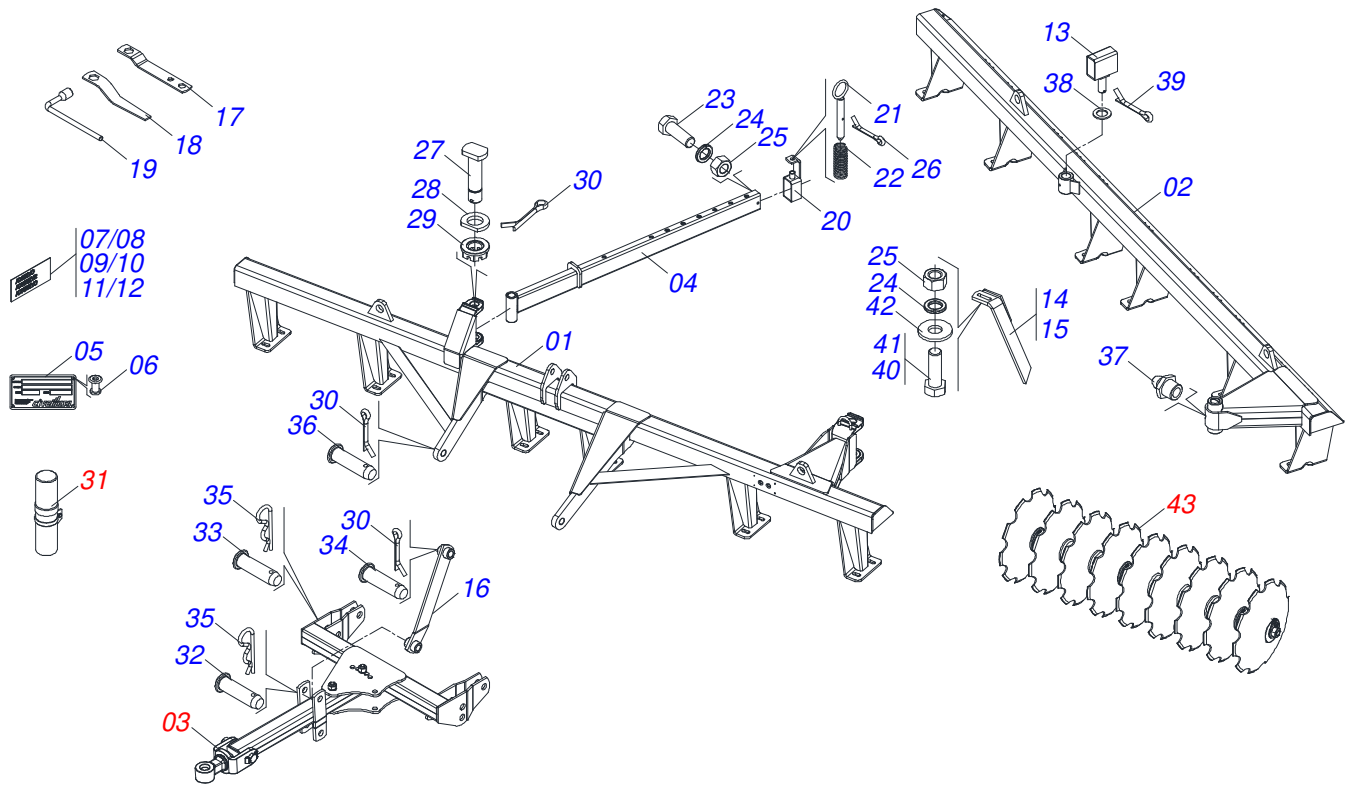
## ATTENTION: IMPORTANT

CIVEMASA reserves the right to improve and/or modify the technical features of its products, without obligation to do the same with those products already sold and without prior knowledge of the dealer or the customer. The photos are only illustrative.



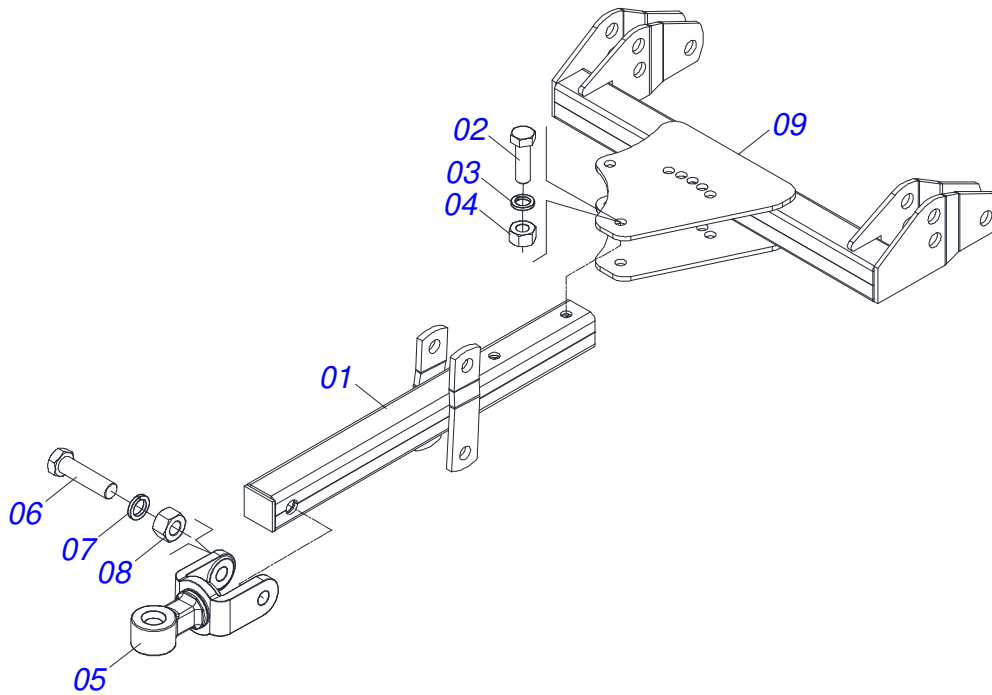
# INDEX

0909090976	FRAME ASSY	.....	1
0531040840	DRAW BAR ASSEMBLY	.....	2
0541051004	MANUAL STORAGE TUBE ASSY	.....	3
0909090988	DISC GANG ASSY	.....	4
0521047189	7.58" X 1.1/4" BEARING WITH PROTECTION	.....	5
0521050842	7.58" X 1.1/4" BEARING	.....	6

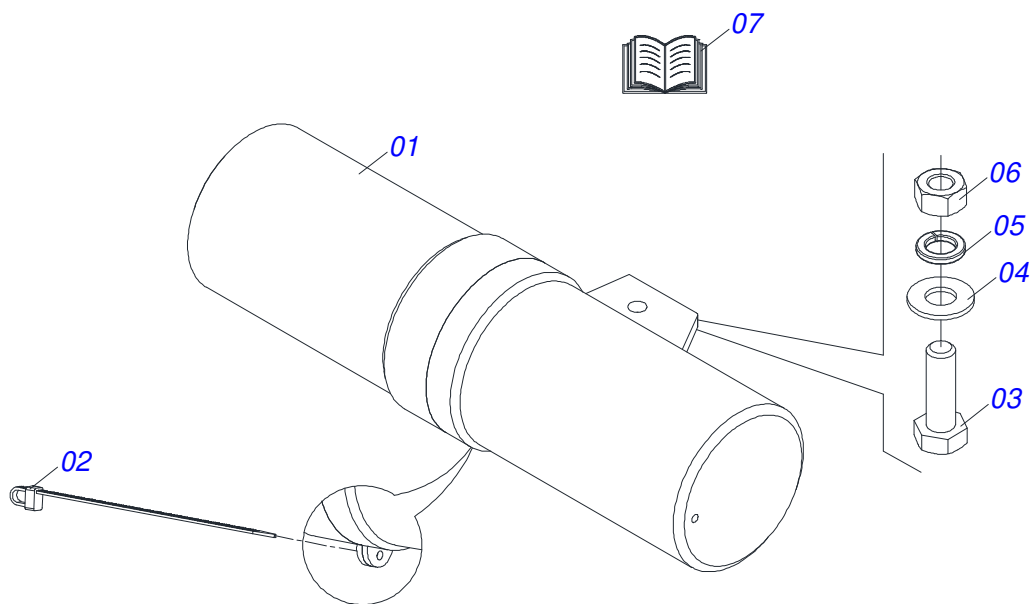


Item	Code	Description	See page	QT
01	0531061992	FRONT FRAME 36D		01
02	0531061994	REAR FRAME 36D		01
03	0531040840	DRAWBAR ASSEMBLY	2	01
04	0531061941	ADJUSTMENT BAR		01
05	0503034004	ALUMINUM IDENTIFICATION DECAL		01
06	0503010001	RIVET 3,2 X 5,5		04
07	0503033590	ADHESIVE		02
08	0503033404	CIVEMASA BADGE		02
09	0503031087	AUTO CONTROL APPROVED DECAL		01
10	0503031428	ATTENTION READ MANUAL DECAL		01
11	0503031827	DAILY LUBRICATION AND RETIGHTENING DECAL		01
12	0503034078	LIFTING POINTS DECAL		04
13	0521065232	BAR GUIDE ESTABILIZER PA		01
14	0501063963	FRONT SCRAPER		11
15	0501063962	REAR SCRAPER		11
16	0531061940	SIDE SUPPORT		01
17	0511018451	5/8" X 3/4" X 1" UNIVERSAL		01
18	0501010198	1-1/4" CABLE FLAT WRENCH		02
19	0501068273	5/8" WRENCH		01
20	0521065233	BOX LIMITER COURSE		01
21	0521065234	AXLE LOCK BAR ADJUSTMENT		01
22	0503034060	COMPRESSION SPRING		01
23	0503010741	1/2" X 2-3/4" BOLT		01
24	0503010019	1/2" SPRING WASHER		53
25	0503010060	1/2 UNC G.5 ZN HEX NUT		51
26	0503010131	3/16" X 1.1/2" SPLIT PIN		01
27	0531019497	1.5" X 9.2" ARTICULATED AXIS		02
28	0531019540	FLAT WASHER		02
29	0501011301	1.1/2" UNC 6FPP 2.5/16" NUT		02
30	0503010571	1/4" X 1.1/2" SPLIT PIN		03
31	0541051004	MANUAL STORAGE TUBE ASSY	3	01
32	0521010581	0.9" X 4.9" COUPLING SHAFT		02

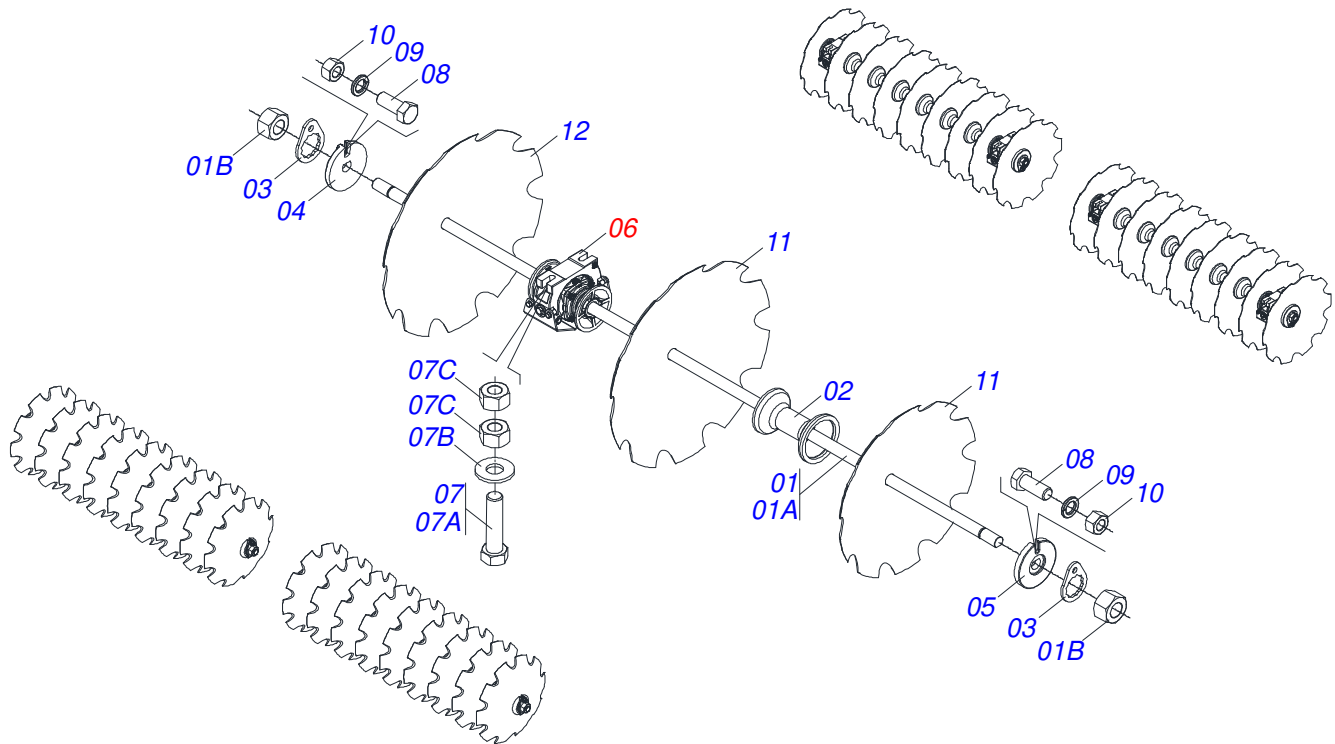
<b>Item</b>	<b>Code</b>	<b>Description</b>	<b>See page</b>	<b>QT</b>
33	0521010593	1.1" X 3.9" COUPLING SHAFT		02
34	0521010579	COUPLING SHAFT		01
35	0503031035	HITCH PIN CLIP		04
36	0521010592	1.1" X 3.1" COUPLING SHAFT		02
37	0503010002	1800 GREASE FITTING		03
38	0501012916	FLAT WASHER 40 X 66 X 4,75 ZN		01
39	0503010073	3/8" X 3.1/2" SPLIT PIN		01
40	0501010161	BOLT 1/2" UNC X 1.1/4" C S G.2 ZN		02
41	0503011082	C1/2" X 1.3/4" SCREW		42
42	0511017302	FLAT WASHER 13,50 X 32,50 X 3,0 ZN		44
43		DISC GANG ASSY	4	



Item	Code	Description	See page	QT
01	0501060670	TRACTION BAR		01
02	0503011084	3/4" X 5" BOLT		02
03	0503011442	3/4" SPRING WASHER		02
04	0503010014	3/4" ZN G.5 (HEAVY) UNC HEX NUT		02
05	0521061775	TRACTOR HITCH		01
06	0501010060	1" X 6-1/2" BOLT		01
07	0503011438	SPRING WASHER		01
08	0501010059	1.5/8 NUT		01
09	0531061946	HITCH BAR		01

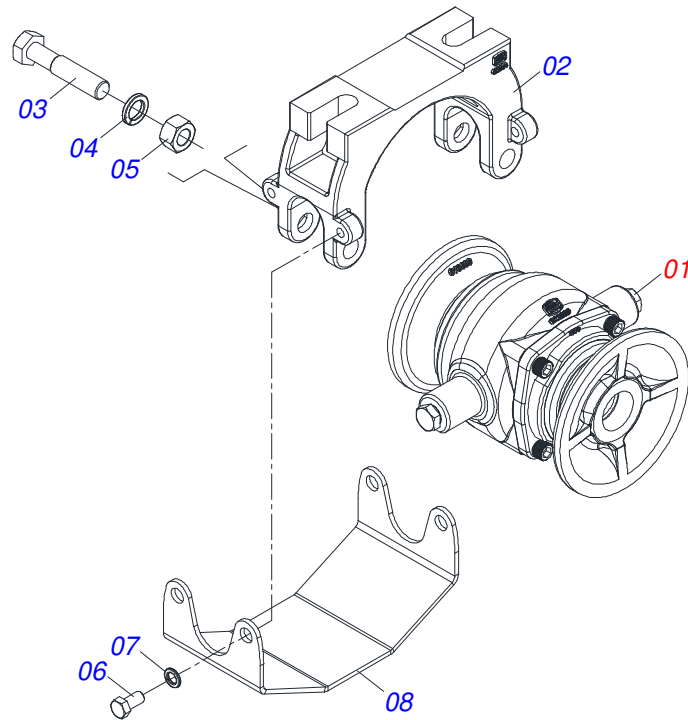


Item	Code	Description	See page	QT
01	0503060100	SUPPORT INSTRUCTION MANUAL		01
02	0503010267	NYLON CLAMP 3,60 X 1,3 X 155 MM		01
03	0503010363	BOLT 5/16 UNC X 1 C S G.2 ZN		01
04	0501010694	FLAT WASHER 32,50 X 75 X 4,75		01
05	0503010179	LOCK WASHER 5/16 ZN 1K01528		01
06	0503010337	NUT 5/16 UNC G.5 ZN		01
07	0511034648	PLASTIC COVER WITH INSTRUCTIONS MANUAL		01

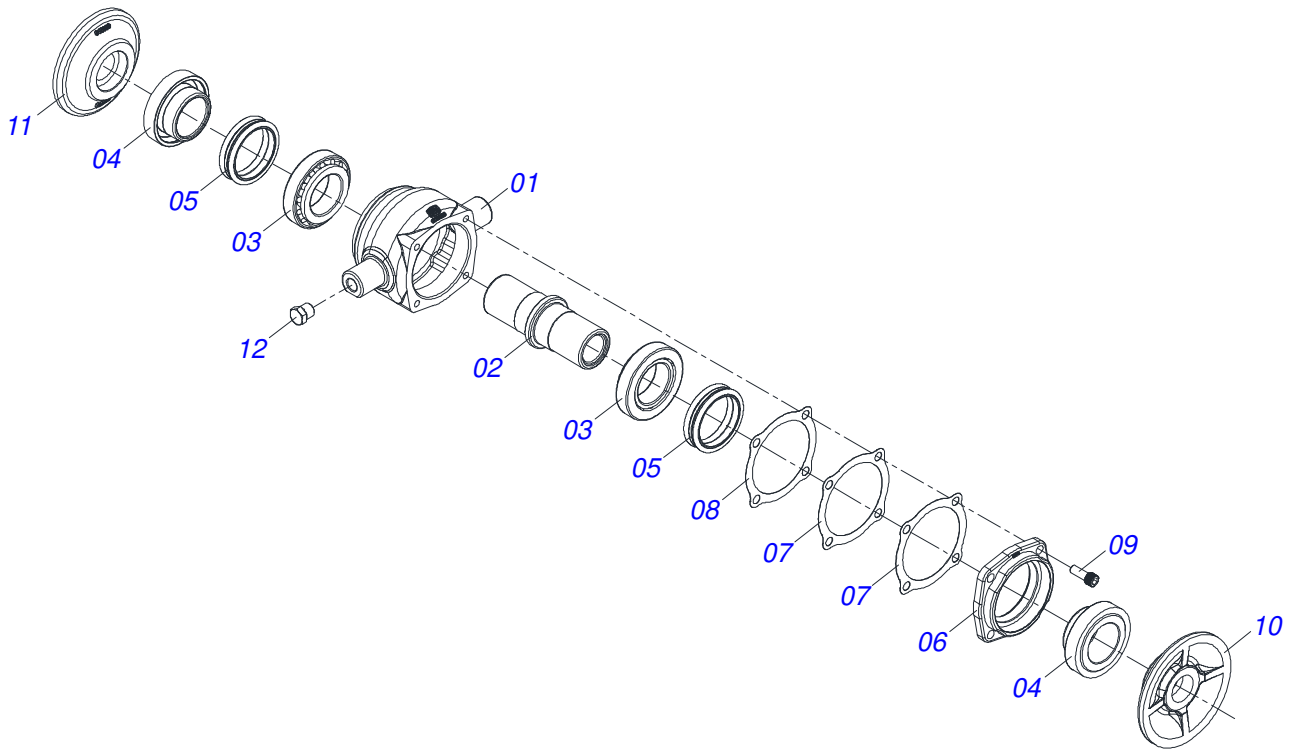


Item	Code	Description	See page	QT
01	0501040694	1-1/4" X 66" AXLE WITH NUTS		04
01A	0501010087	1.1/4" NUT		02
01B	0501010439	1-1/4" X 66" AXLE		01
02	0502010549	7.6" X 1-1/4" SPACER		20
03	0501010455	1.1/4" NUT LOCK		08
04	0502010834	1-1/4" INNER AXLE WASHER		04
05	0502010835	1-1/4" EXTERNAL AXLE WASHER		04
06	0521047189	7.58" X 1.1/4" BEARING WITH PROTECTION	5	12
07	0521059224	BOLT ASSEMBLY 5/8 UNC X 2.3/4		24
07A	0501013233	5/8" X 2-3/4" BOLT		01
07B	0501012140	FLAT WASHER 16,50 X 40 X 4,00 ZN		01
07C	0503010013	5/8 UNC G.5 ZN HEX NUT		02
08	0503010395	1/2" X 1-1/4" BOLT		08
09	0503010019	1/2" SPRING WASHER		08
10	0503010060	1/2 UNC G.5 ZN HEX NUT		08
11	0602029421	DR 22 X 4,50 C64AF02FR1.5/16 10R		34
12	0602027340	DR 20 X 3,50 C57AF02FR1.5/16 10R		02





Item	Code	Description	See page	QT
01	0521050842	7.58" X 1.1/4" BEARING	6	01
02	0502012854	BEARING SUPPORT 182/192,5		01
03	0501011541	5/8 UNC X 3 CS G.5 ZN1K28066 BOLT		02
04	0503010027	5/8 SPRING WASHER		02
05	0503010013	5/8 UNC G.5 ZN HEX NUT		02
06	0503011334	3/8 UNC X 3/4 CS G.5 ZN BOLT		04
07	0503010025	3/8" SPRING WASHER		04
08	0581014143	SWIVEL OIL BATH BEARING WEAR PLATE		01



Item	Code	Description	See page	QT
01	0502012839	BEARING HOUSING 182/192,5		01
02	0502040060	AXLE CM/DM 182/192,5 SKF 32210		01
03	0503010006	32210 ROLLER BEARING		02
04	0502010541	SEAL HOLDER		02
05	0503030026	SEAL LP JB-253		02
06	0502020424	HOUSING CAP 182/192,225		01
07	0503030013	4.4" X 3.5" X 0.004" JOINT		02
08	0503030684	4.4" X 3.5" X 0.004" JOINT		01
09	0503010134	3/8" X 1" BOLT		04
10	0502010070	OUTER FLANGE		01
11	0502010071	INNER FLANGE		01
12	0503010856	OIL PLUG R 3/8 BSPT		02





***civemasa***

**Technical Publications | Elaboration and Revision**  
ALESSANDRA PATRICIA KAWAHARA CARRILI

[www.civemasa.com.br](http://www.civemasa.com.br)

