

**LIME AND FERTILIZER SPREADER**

**DTF2/V 7.5 HYDRAULIC DRIVE / CONVEYOR BELT  
KIT**

**DTF2/V 7.5 ACIONADOR HIDRÁULICO / KIT ESTEIRA**

**Code:** 0501099034  
**Series:** S-0118  
**Revision:** 00  
**Revision Date:** FEBRUARY/2024

# **PARTS CATALOGUE**

***CIVEMASA***

A solid orange rectangular bar is positioned at the top left of the page, above the "PRODUCTS" heading.

# PRODUCTS

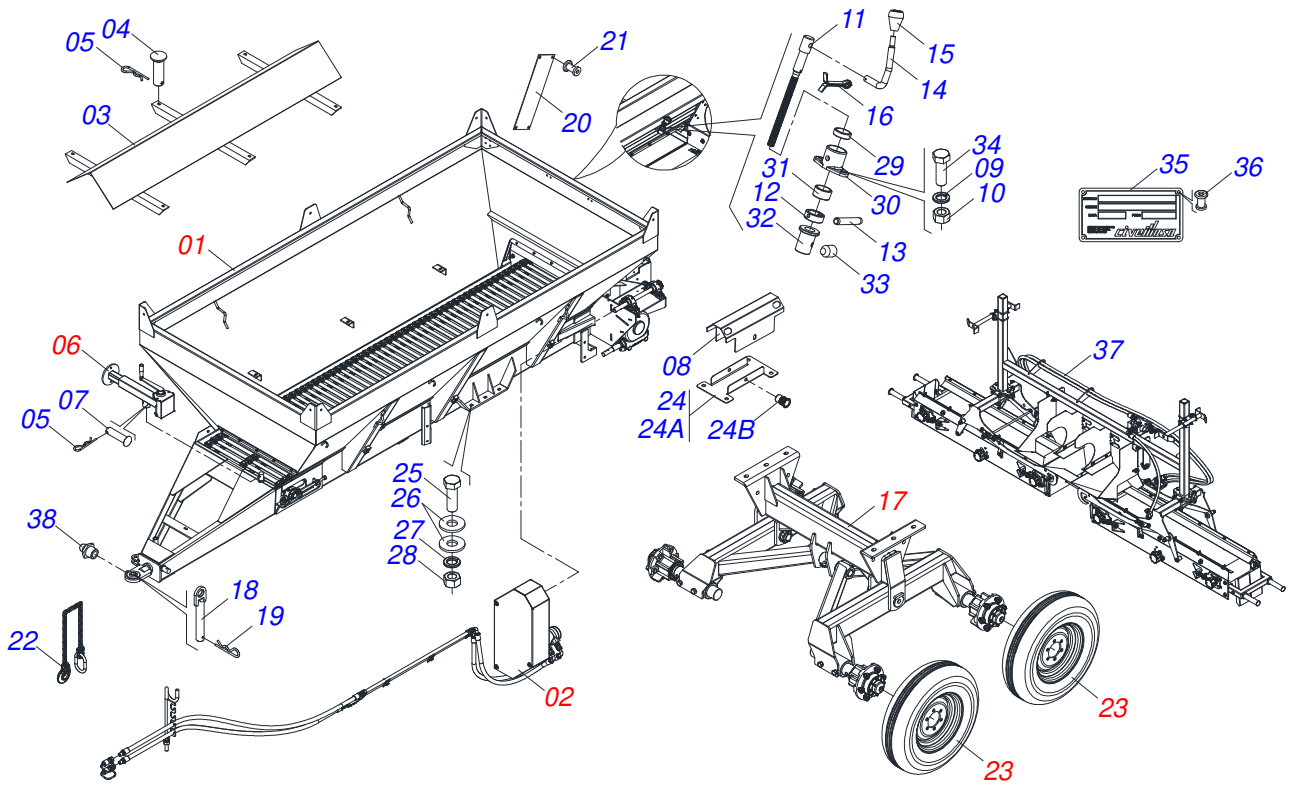
Code	Working Width	Description
0121150082		DTF2/V 7.5 ACION HIDR KIT EST 1,3/1,5 AC S-0118

### ATTENTION: IMPORTANT

CIVEMASA reserves the right to improve and/or modify the technical features of its products, without obligation to do the same with those products already sold and without prior knowledge of the dealer or the customer. The photos are only illustrative.

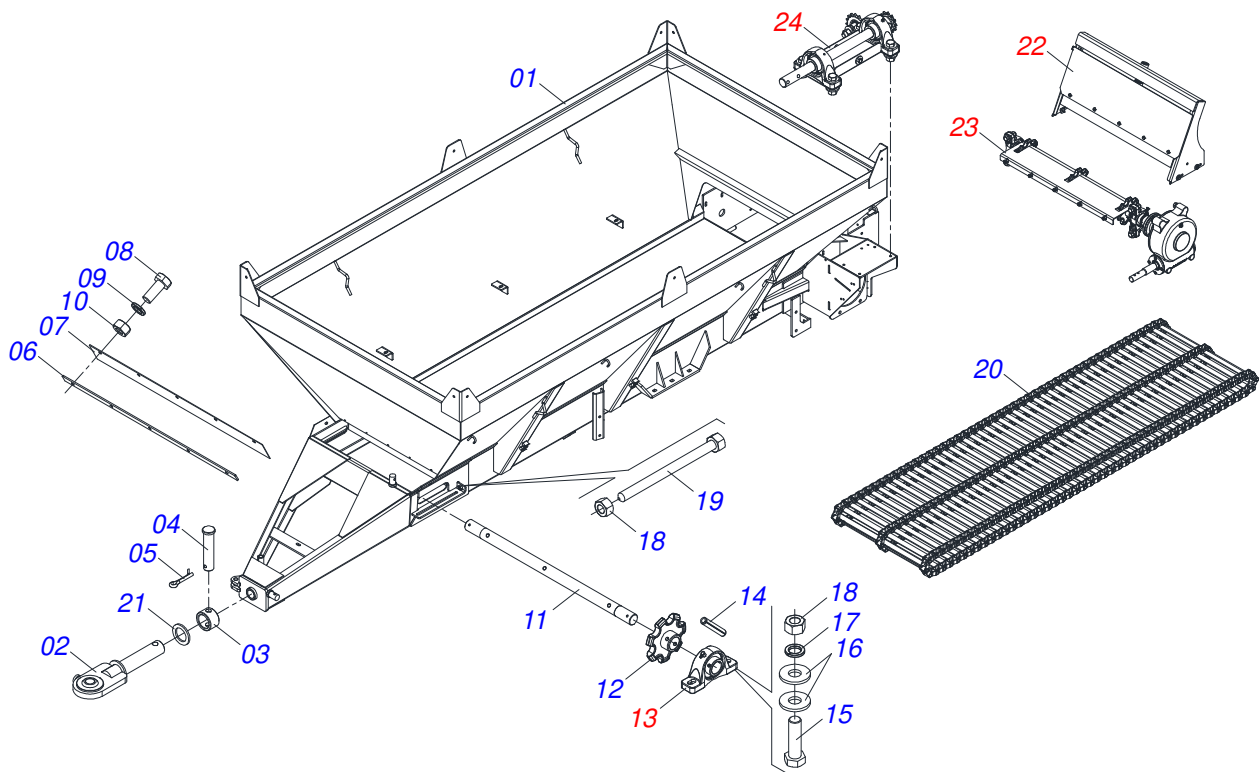
# INDEX

0909097087	FRAME ASSY	.....	1
0541050141	HYDRAULIC DRIVE FRAME SEMI ASSEMBLED	.....	2
0501044308	AGRICULTURAL BEARING ASSY	.....	3
0909093858	GATE ASSY	.....	4
0909094123	REDUCTION ASSY	.....	5
0501047985	REDUCER	.....	6
0501051774	38Z CROWN	.....	7
0909094122	TRANSMISSION ASSY	.....	8
0511041213	AGRICULTURAL BEARING	.....	9
0521052251	HYDRAULIC DRIVE ASSY	.....	10
0511053588	MOTOR HYDRAULIC OMP 80 WITH NIPPLE 7/8 NIPPE 7/8	.....	11
0521051671	TENSIONER ASSY GREATEST	.....	12
0511054496	SMALLER TENSIONER ASSY	.....	13
0521051670	UNIDIRECTIONAL VALVE ASSY	.....	14
0501053834	MALE QUICK COUPLER	.....	15
0511041259	JACK ASSY	.....	16
0511045190	BELL CRANK SUPPORT FIXATION	.....	17
0501057223	CARRYING WHEEL HUB ASSY	.....	18
0501051142	CARRYING WHEEL HUB	.....	19
0503060181	WHEEL AND TIRE	.....	20

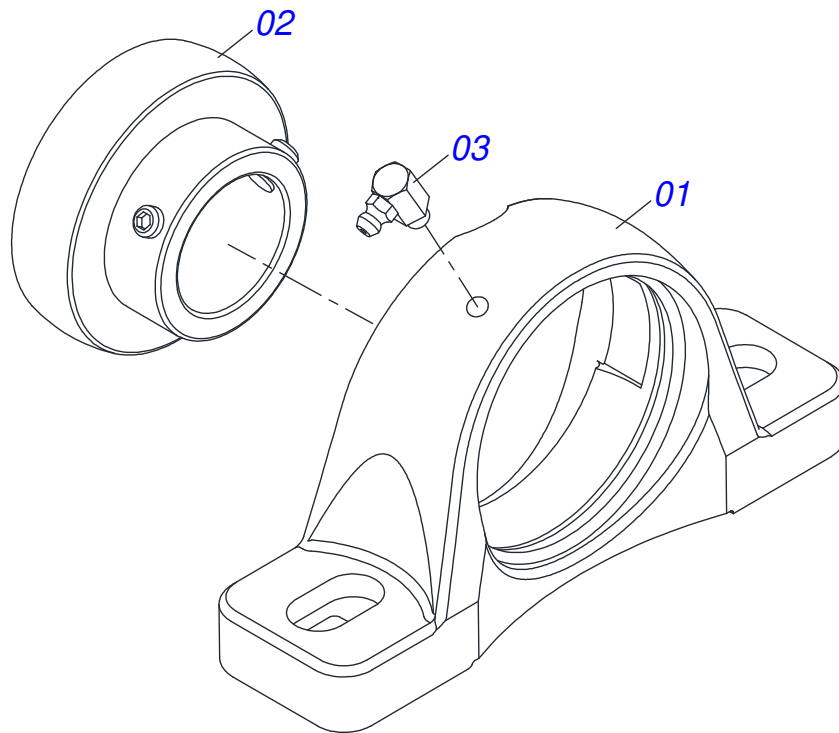


Item	Code	Description	See page	QT
01	0541050141	HYDRAULIC DRIVE FRAME SEMI ASSEMBLED	2	01
02	0521052251	HYDRAULIC DRIVE ASSY	10	01
03	0511063853	LARGER DEFLECTOR		01
04	0521017623	0.5" X 1.5" COUPLING SHAFT		06
05	0503030168	HITCH PIN CLIP		07
06	0511041259	JACK ASSY	16	01
07	0521010549	COUPLING SHAFT		01
08	0581015152	COVER PROTECTION		01
09	0503010025	3/8 SPRING WASHER		04
10	0503010026	3/8" NUT		04
11	0561014861	REGULATOR		01
12	0511013015	SLEEVE		01
13	0503010561	SPRING PIN		01
14	0521011107	CRANK BODY		01
15	0503030878	LEVER CRANK		01
16	0503010257	1/8" X 1" SPLIT PIN		01
17	0511045190	BELL CRANK SUPPORT FIXATION	17	01
18	0501068989	COUPLING SHAFT		01
19	0503031035	HITCH PIN CLIP		01
20	0503030751	REGULATOR PLATE		01
21	0503010001	RIVET 3,2 X 5,5		04
22	0503013150	1300 X 3/8" CHAIN		01
23	0503060181	WHEEL AND TIRE	20	04
24	0531059022	PROTECTION COVER FIXER		01
24A	0581015151	FIXING BODY COVER PROTECTION		01
24B	0503019416	RIVET SCREW THREAD INTERNAL		02
25	0503010899	5/8 UNC X 2.1/4 BOLT		06
26	0501012140	FLAT WASHER 16,50 X 40 X 4,00 ZN		12
27	0503010027	5/8 SPRING WASHER		06
28	0503010013	5/8 UNC G.5 ZN HEX NUT		06

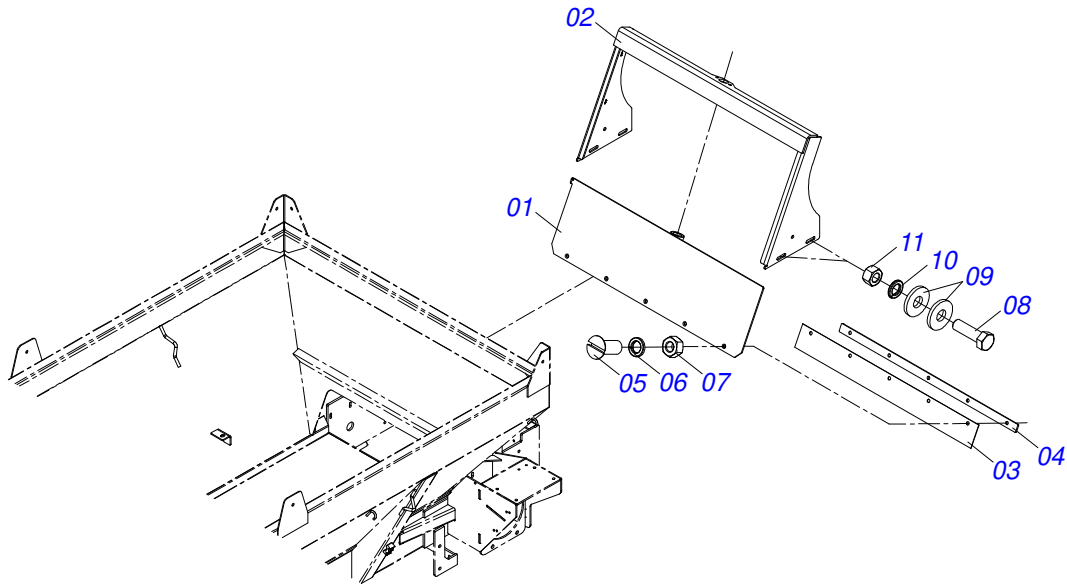
<b>Item</b>	<b>Code</b>	<b>Description</b>	<b>See page</b>	<b>QT</b>
29	0521010458	SLEEVE		01
30	0502010581	ROD BEARING		01
31	0521010457	SLEEVE		01
32	0501019831	ADJUSTING NUT		01
33	0503011148	3/8" X 1/2" BOLT		01
34	0503010751	C3/8" X 1.1/4" HEX BOLT G.5		02
35	0503034004	ALUMINUM IDENTIFICATION DECAL		01
36	0503010001	RIVET 3,2 X 5,5		04
37	0503063722	ORGANIC AND MINERAL FERTILIZER APPLICATION KIT 1,3/1,5 METERS		01
38	0503010002	1800 GREASE FITTING		01



Item	Code	Description	See page	QT
01	0521064379	FRAME WITH BUCKET		01
02	0521068793	TRACTOR TRACTOR		01
03	0521010681	BUSHING COUPLING BODY		01
04	0521010639	COUPLING SHAFT		01
05	0503010571	1/4" X 1.1/2" SPLIT PIN		01
06	0531014331	GATE COVER FIXER		01
07	0531014336	31.4"X3.1"X 0.1" PROTECTION SMALLER		01
08	0503010240	BOLT		05
09	0503011444	SPRING WASHER 5/16"		05
10	0503010337	NUT 5/16 UNC G.5 ZN		05
11	0531014345	DRIVEN AXLE		01
12	0591016380	GEAR		01
13	0501044308	AGRICULTURAL BEARING ASSY	3	02
14	0503010361	SPRING PIN		03
15	0503010899	5/8 UNC X 2.1/4 BOLT		04
16	0501012140	FLAT WASHER 16,50 X 40 X 4,00 ZN		08
17	0503010027	5/8 SPRING WASHER		04
18	0503010013	5/8 UNC G.5 ZN HEX NUT		06
19	0501067853	ROD STABILIZER		02
20	0511065278	CONVEYOR BELT		01
21	0501815875	FLAT WASHER		01
22		GATE ASSY	4	
23		REDUCTION ASSY	5	
24		TRANSMISSION ASSY	8	

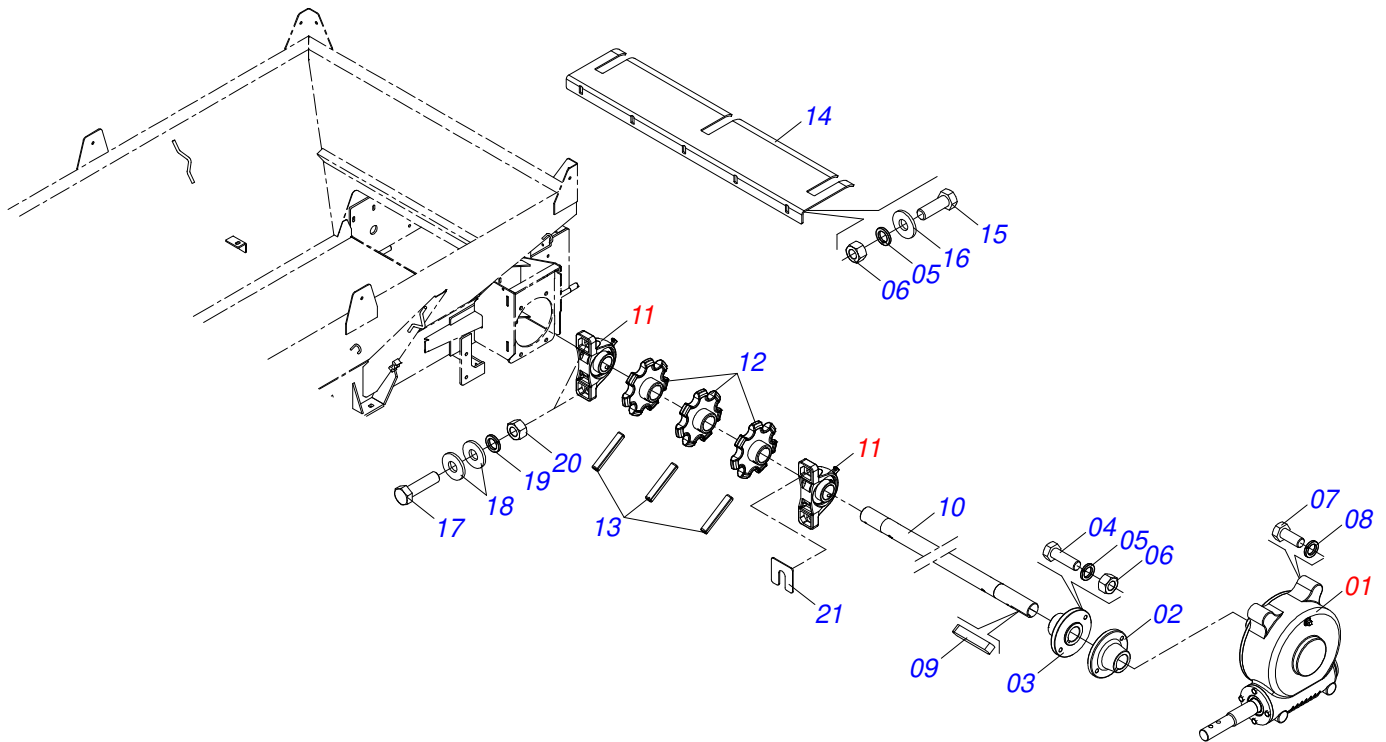


Item	Code	Description	See page	QT
01	0502011050	AGRICULTURAL HOUSING BEARING		01
02	0503011163	1108/UCR BEARING ASSY		01
03	0503010004	1890 GREASE FITTING		01

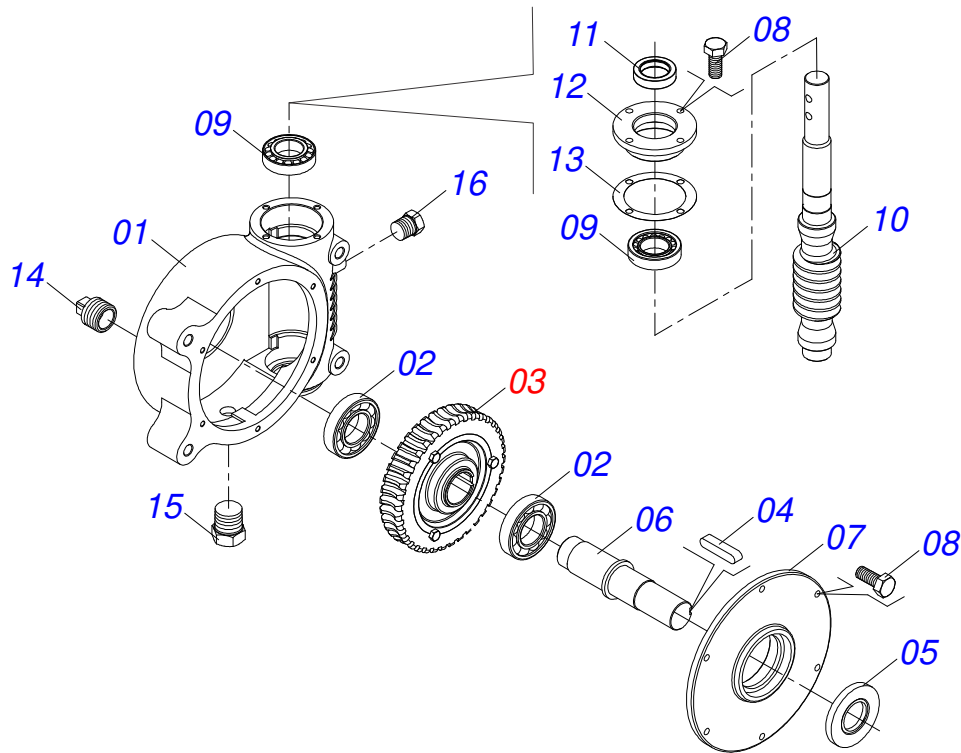


Item	Code	Description	See page	QT
01	0511063413	GATE LID		01
02	0511063410	GATE SUPPORT		01
03	0531014336	31.4"X3.1"X 0.1" PROTECTION SMALLER		01
04	0531014331	GATE COVER FIXER		01
05	0503010814	5/16 BOLT		05
06	0503010179	LOCK WASHER 5/16 ZN 1K01528		05
07	0503010337	NUT 5/16 UNC G.5 ZN		05
08	0503010751	C3/8" X 1.1/4" HEX BOLT G.5		04
09	0501010984	10,50 X 27 X 3,00 FLAT WASHER		08
10	0503010025	3/8 SPRING WASHER		04
11	0503010026	3/8" NUT		04

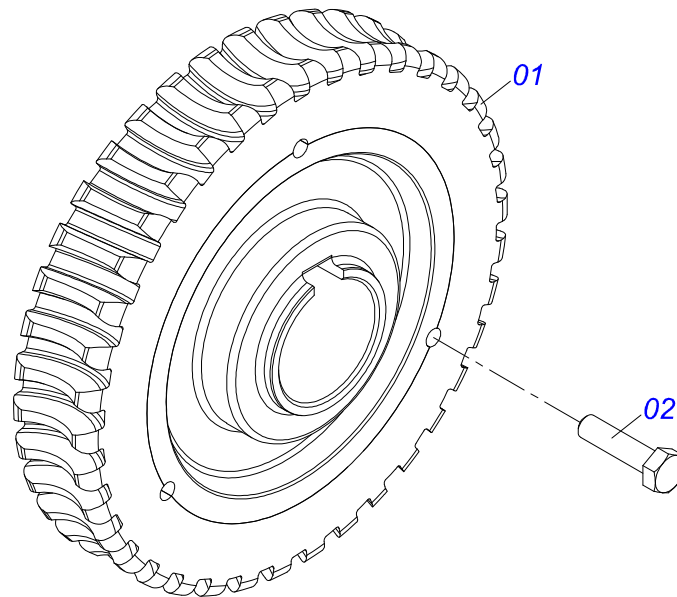




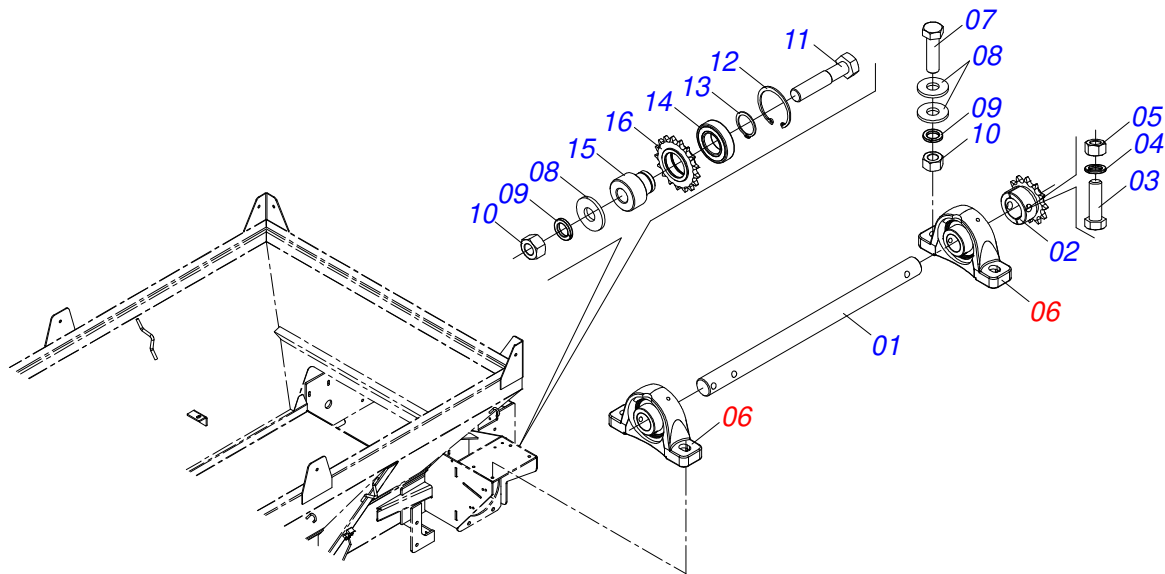
Item	Code	Description	See page	QT
01	0501047985	REDUCER	6	01
02	0511016540	MAT COUPLING FLANGE		01
03	0511016541	REDUCTION COUPLING FLANGE		01
04	0503010849	3/8" X 1-1/2" BOLT		02
05	0503010025	3/8 SPRING WASHER		07
06	0503010026	3/8" NUT		07
07	0503011167	M16 X 2 X 30 BOLT		04
08	0503010027	5/8 SPRING WASHER		04
09	0501010540	KEYWAY SQUARE		02
10	0531014346	MOTOR SHAFT		01
11	0501044308	AGRICULTURAL BEARING ASSY	3	02
12	0502040728	7Z GEAR		03
13	0503010361	SPRING PIN		03
14	0531014324	TOOTHED PLATE		01
15	0503010237	3/8" X 1" BOLT		05
16	0501010984	10,50 X 27 X 3,00 FLAT WASHER		05
17	0503010899	5/8 UNC X 2.1/4 BOLT		04
18	0501012140	FLAT WASHER 16,50 X 40 X 4,00 ZN		08
19	0503010027	5/8 SPRING WASHER		04
20	0503010013	5/8 UNC G.5 ZN HEX NUT		04
21	0501010794	REGULATOR SHIM		02



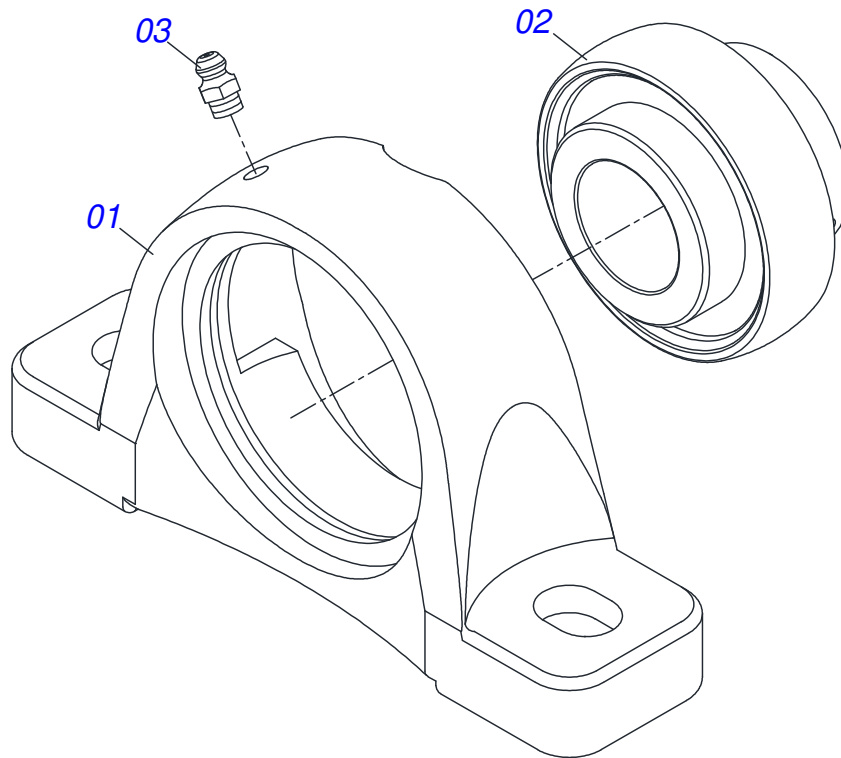
Item	Code	Description	See page	QT
01	0502011456	REDUCTION BOX		01
02	0503011095	6208 BALL BEARING		02
03	0501051774	38Z CROWN	7	01
04	0503011304	1/2" X 2.4" KEYWAY SQUARE		01
05	0503010818	02675-BRG SEAL		01
06	0521010996	AXLE		01
07	0502020556	LARGER COVER		01
08	0503010240	BOLT		10
09	0503010016	BEARING LM		02
10	0521010997	SCREW THEAD		01
11	0503011171	00912-BRG SEAL		01
12	0502011457	SMALLER COVER		01
13	0503030981	102 X 75,5 X 0,10 JOINT		01
14	0521011023	PLUG		01
15	0513010009	LEVEL DISPLAY		01
16	0503010856	OIL PLUG R 3/8 BSPT		01



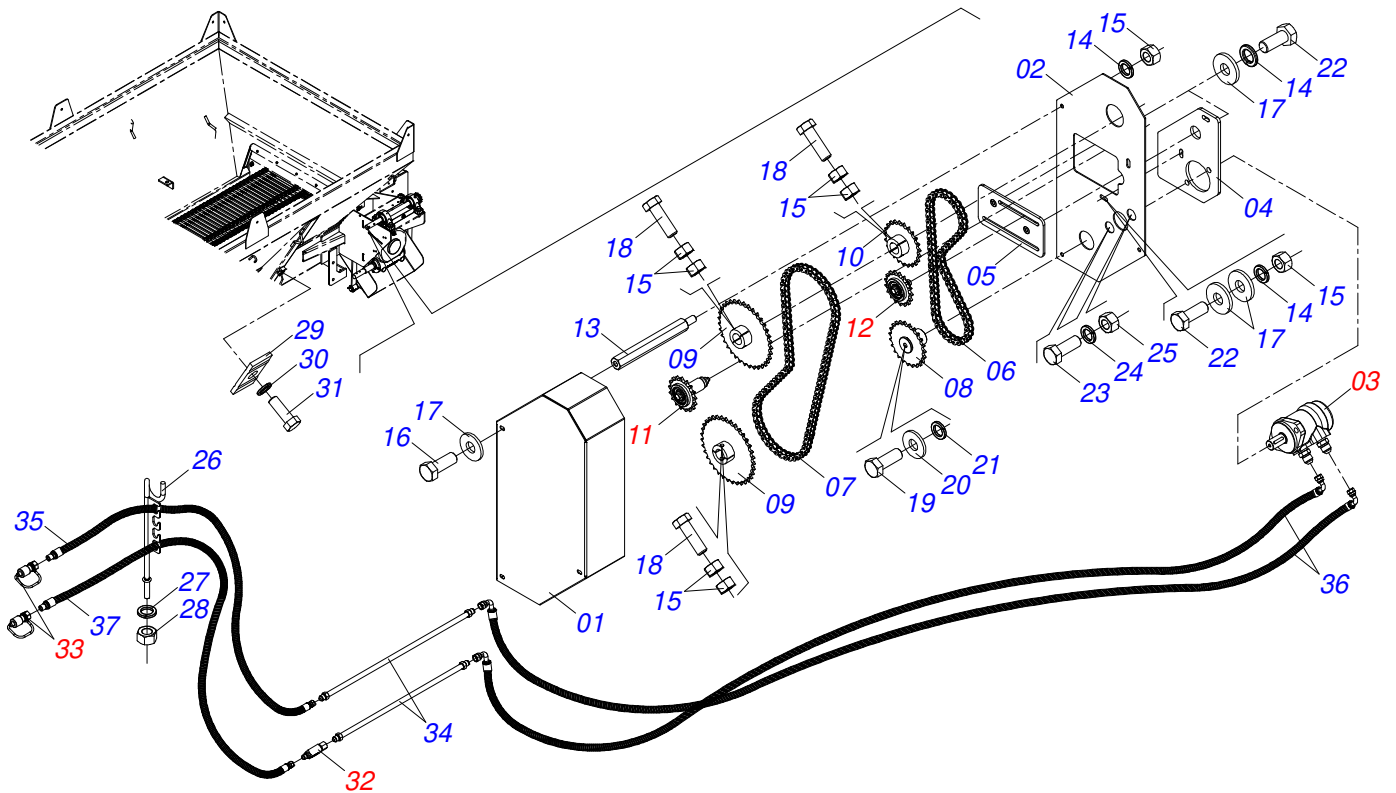
Item	Code	Description	See page	QT
01	0501110280	38Z CONICAL		01
02	0503010365	BOLT 5/16 UNC X 1.1/4 C S G.5 ZN		03



Item	Code	Description	See page	QT
01	0581015137	GREATER TRANSMISSION AXIS		01
02	0501069017	12Z GEAR		01
03	0503011268	3/8" X 2-1/2" BOLT		01
04	0503010025	3/8 SPRING WASHER		01
05	0503010026	3/8" NUT		01
06	0511041213	AGRICULTURAL BEARING	9	02
07	0503010899	5/8 UNC X 2.1/4 BOLT		04
08	0501012140	FLAT WASHER 16,50 X 40 X 4,00 ZN		09
09	0503010027	5/8 SPRING WASHER		04
10	0503010013	5/8 UNC G.5 ZN HEX NUT		04
11	0501011541	5/8 UNC X 3 CS G.5 ZN1K28066 BOLT		01
12	0503011105	SEAL RING		01
13	0503010406	501025 CLAMPING RING (FOR AXLE)		01
14	0503011410	ROLLER BEARING		01
15	0581015136	40MM STRETCHING SHAFT		01
16	0511061836	17Z GEAR		01

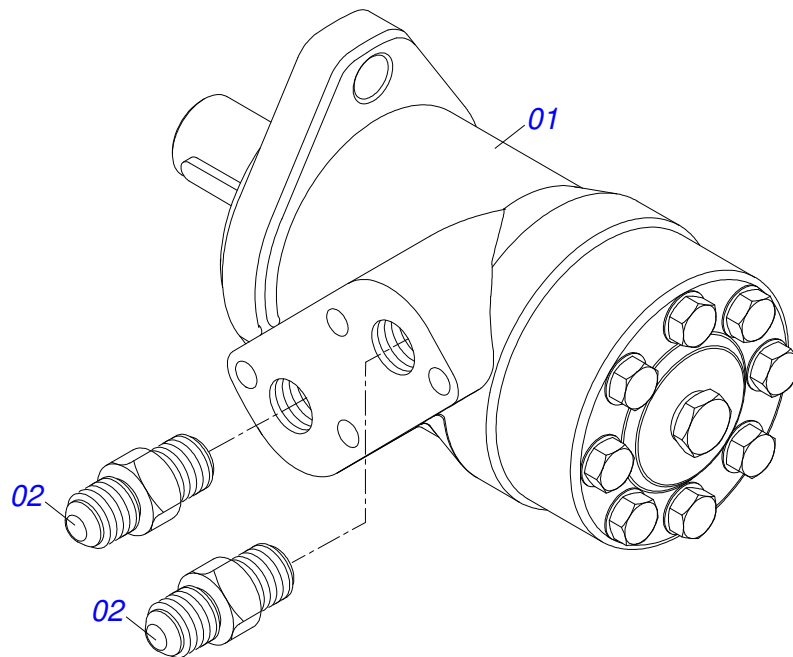


Item	Code	Description	See page	QT
01	0502011954	AGRICULTURAL HOUSING BEARING		01
02	0503011884	BALL BEARING		01
03	0503010691	1/4" GREASE FITTING		01



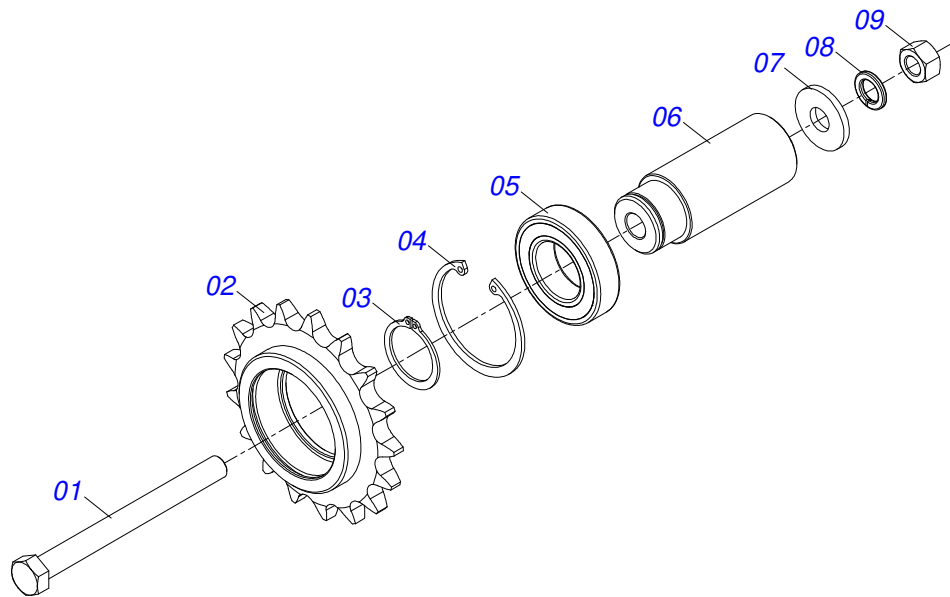
Item	Code	Description	See page	QT
01	0571015457	CHAIN CAP		01
02	0571015456	PROTETION REAR		01
03	0511053588	MOTOR HYDRAULIC OMP 80 WITH NIPPLE 7/8 NIPPE 7/8		01
04	0571015182	HIDRAULIC MOTOR SUPPORT		01
05	0521064691	SUPPORT TENSIONER		01
06	0503013061	50-1 CHAIN X 64 LINK + REDUCTION		01
07	0503013003	50-1 CHAIN X 79 LINK + REDUCTION + MENDING		01
08	0521064566	GEAR HIDRAULIC MOTOR		01
09	0501069020	35Z GEAR		02
10	0521063041	GEAR 23Z		01
11	0521051671	TENSIONER ASSY GREATEST	12	01
12	0511054496	SMALLER TENSIONER ASSY	13	01
13	0571015189	PRISONER 3/8"		03
14	0503010025	3/8" SPRING WASHER		07
15	0503010026	3/8" NUT		11
16	0503010240	BOLT		03
17	0501010984	10,50 X 27 X 3,00 FLAT WASHER		09
18	0503011141	3/8" X 2-3/4" BOLT		03
19	0503011257	M 8 X 1,25 X 30 BOLT		01
20	0501010694	FLAT WASHER 32,50 X 75 X 4,75		01
21	0503010179	LOCK WASHER 5/16 ZN 1K01528		01
22	0503010849	3/8" X 1-1/2" BOLT		04
23	0503010920	1/2 UNC X 1.1/2 C S G.5 ZN BOLT		02
24	0503010019	1/2" SPRING WASHER		02
25	0503010060	1/2 UNC G.5 ZN HEX NUT		02
26	0501060409	HOSE SUPPORT ASSY		01
27	0503010023	3/4" SPRING WASHER		01
28	0503010014	3/4" ZN G.5 (HEAVY) UNC HEX NUT		01
29	0531011180	UPPER BODY CLIP		02

<b>Item</b>	<b>Code</b>	<b>Description</b>	<b>See page</b>	<b>QT</b>
30	0503010180	7/16" SPRING WASHER		02
31	0503011102	BOLT 7/16 UNC X 1.1/4 C S G.5 ZN		02
32	0521051670	UNIDIRECTIONAL VALVE ASSY	14	01
33	0501053834	MALE QUICK COUPLER	15	02
34	0521066604	OIL TUBE		02
35	0501080246	1/2" X 102.36" TR-TM HOSE		01
36	0501081512	1/2" X 31.50" TC-TC 90G HOSE		02
37	0501080246	1/2" X 102.36" TR-TM HOSE		01

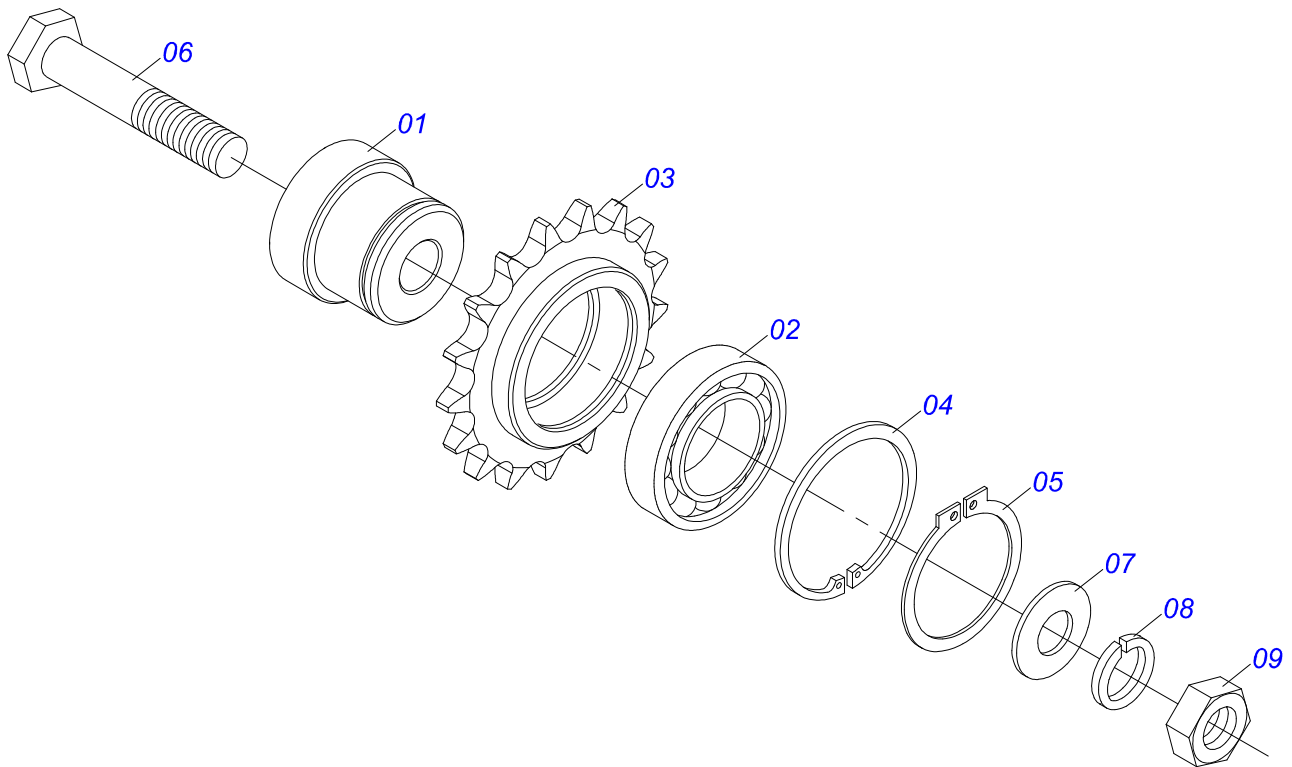


Item	Code	Description	See page	QT
01	0503016055	PARKER OMP 80 ISOBUS HYDRAULIC MOTOR		01
02	0511014065	7/8" NF X R1/2NPT X 52 NIPPLE		02

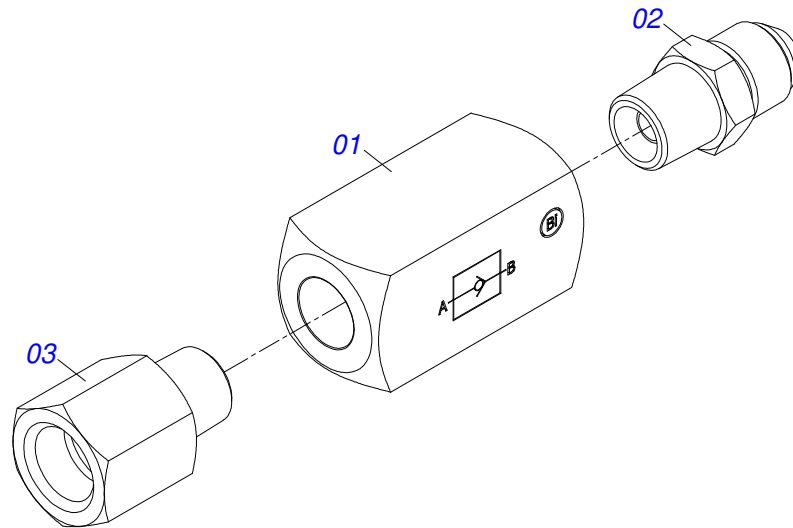




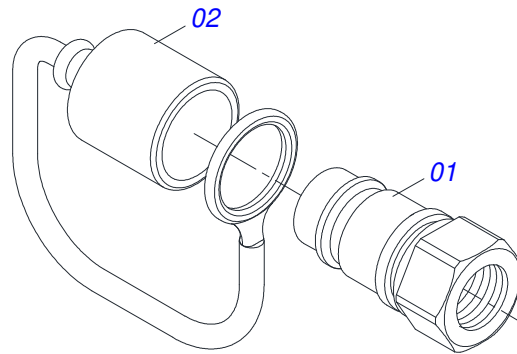
Item	Code	Description	See page	QT
01	0503010481	BOLT		01
02	0511061836	17Z GEAR		01
03	0503010406	501025 CLAMPING RING (FOR AXLE)		01
04	0503011105	SEAL RING		01
05	0503011410	ROLLER BEARING		01
06	0581015144	75MM STRETCHING SHAFT		01
07	0501010984	10,50 X 27 X 3,00 FLAT WASHER		01
08	0503010025	3/8 SPRING WASHER		01
09	0503010026	3/8" NUT		01



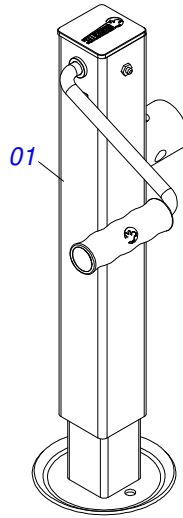
Item	Code	Description	See page	QT
01	0571015185	AXLE TIGHTENER 26		01
02	0503011410	ROLLER BEARING		01
03	0511061836	17Z GEAR		01
04	0503011105	SEAL RING		01
05	0503010406	501025 CLAMPING RING (FOR AXLE)		01
06	0501010096	3/8" X 2" BOLT		01
07	0501010984	10,50 X 27 X 3,00 FLAT WASHER		01
08	0503010025	3/8 SPRING WASHER		01
09	0503010026	3/8" NUT		01



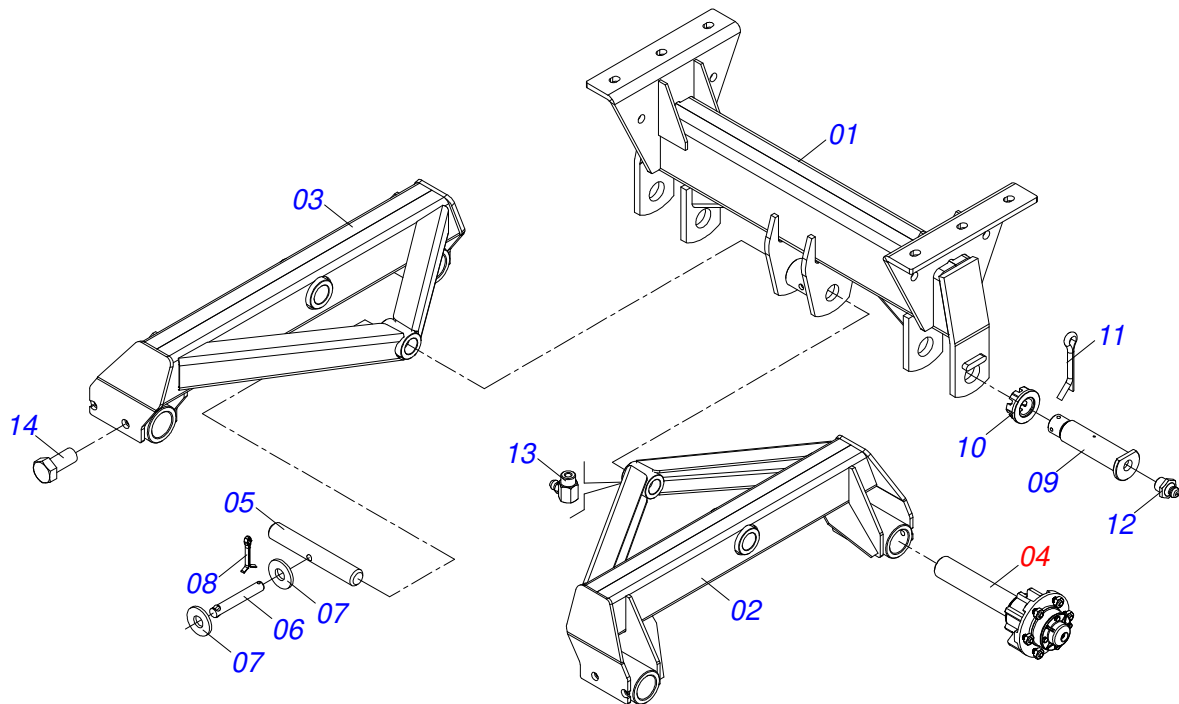
Item	Code	Description	See page	QT
01	0503014463	VALVE RETAINING		01
02	0581013814	1/2" NIPPLE		01
03	0581015140	NIPLE 1/2 BSPT X 7/8 UNF X 51		01



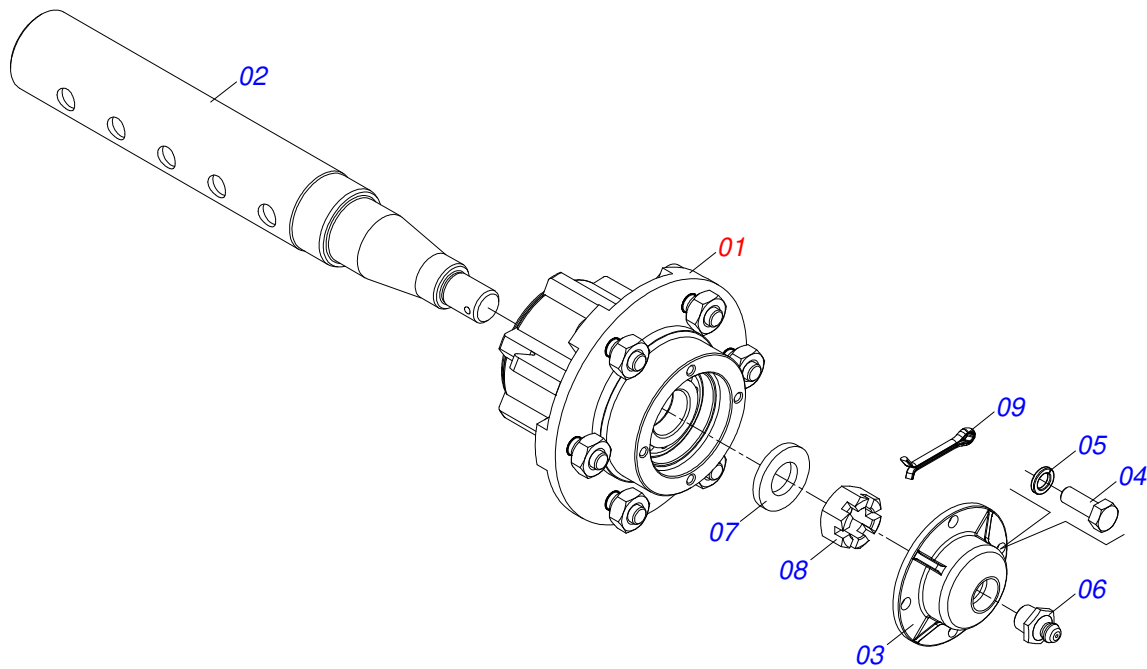
Item	Code	Description	See page	QT
01	0503011627	MALE QUICK COUPLER AGR 1/2 NPT		01
02	0503011882	MALE QUICK COUPLER CAP		01



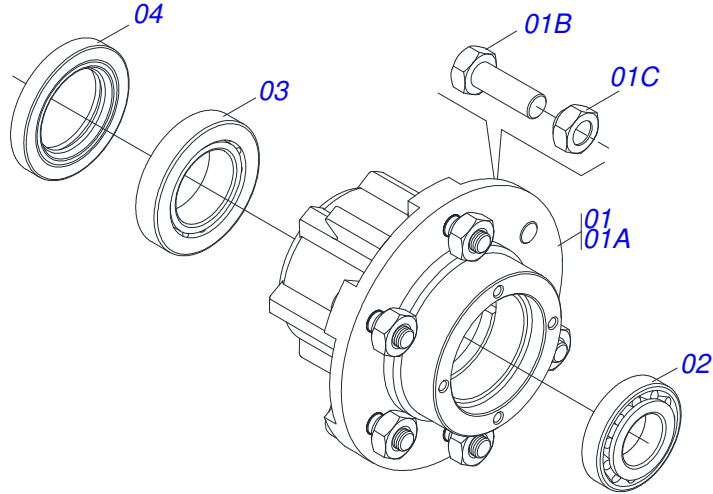
Item	Code	Description	See page	QT
01	0503062157	DRAWBAR JACK		01



Item	Code	Description	See page	QT
01	0511067820	ROCKER ARM SUPPORT FIXATION		01
02	0511067818	RH ROCKER ARM		01
03	0511067819	LH ROCKER ARM		01
04	0501057223	CARRYING WHEEL HUB ASSY	18	04
05	0521012427	1.5" X 11.4" COUPLING SHAFT		01
06	0521010641	COUPLING SHAFT		01
07	0511017302	FLAT WASHER 13,50 X 32,50 X 3,0 ZN		02
08	0503010257	1/8" X 1" SPLIT PIN		01
09	0521012431	1-1/2" 7.6 PIVOT SHAFT		02
10	0501011301	1.1/2" UNC 6FPP 2.5/16" NUT		02
11	0503010010	SPLIT PIN 1/4" X 2.1/2"		02
12	0503010002	1800 GREASE FITTING		02
13	0503010004	1890 GREASE FITTING		02
14	0511016156	BOLT 5/8 UNC X1.1/2 CS PC G.5 ZN		08

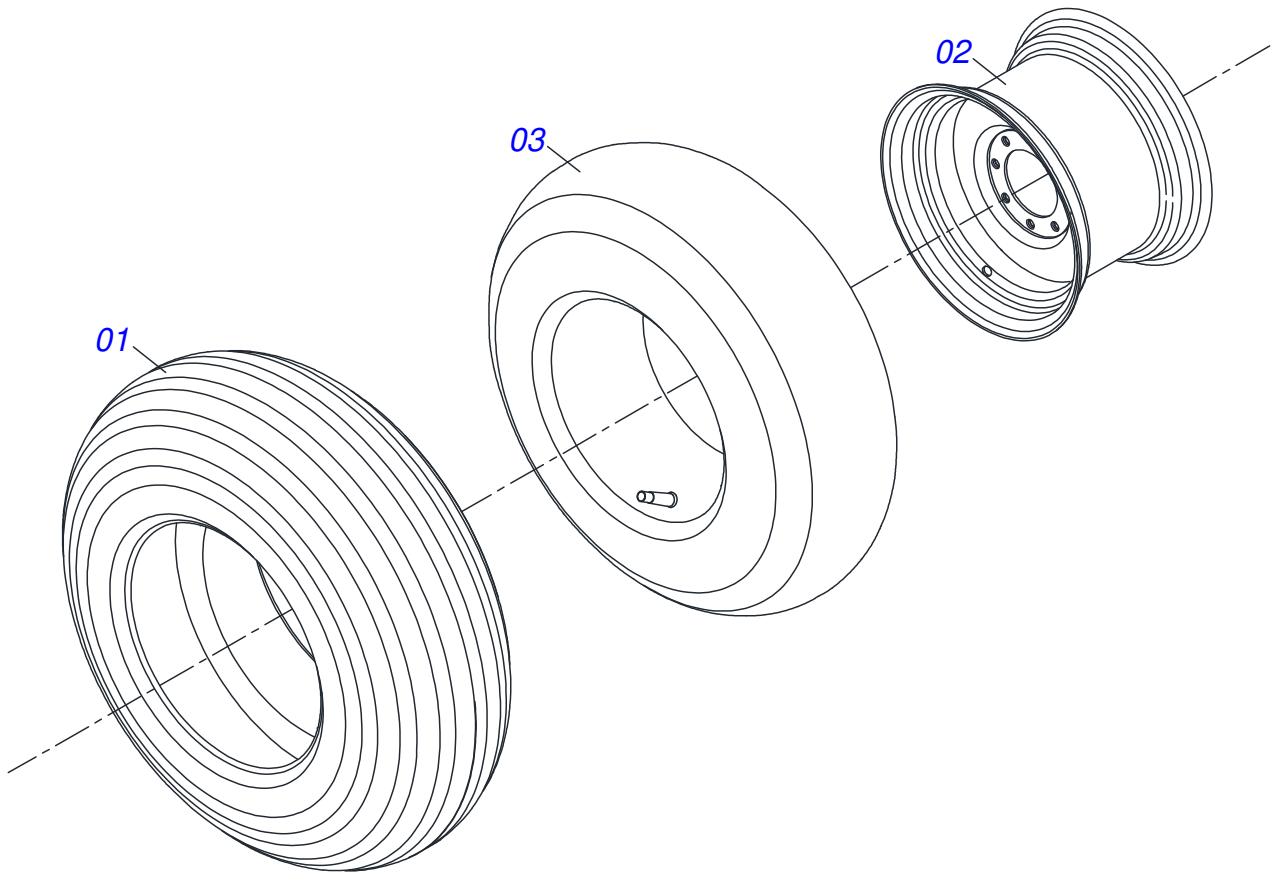


Item	Code	Description	See page	QT
01	0501051142	CARRYING WHEEL HUB	19	01
02	0551011885	62MM X 396MM AXLE		01
03	0502020591	PROTECCION COVER		01
04	0503010358	5/16" X 5/8" BOLT		04
05	0503011444	SPRING WASHER 5/16"		04
06	0503010002	1800 GREASE FITTING		01
07	0501016545	FLAT WASHER		01
08	0503030009	1" CASTLE NUT		01
09	0503010131	3/16" X 1.1/2" SPLIT PIN		01



Item	Code	Description	See page	QT
01	0501110728	WHEEL HUB		01
01A	0502011121	CARRYING WHEEL HUB		01
01B	0501010127	9/16" X 1-7/8" LUG BOLT		06
01C	0503010035	9/16" CONIC NUT		06
02	0503010037	30207 ROLLER BEARING		01
03	0503010006	32210 ROLLER BEARING		01
04	0503012928	SEAL		01





Item	Code	Description	See page	QT
01	0503010858	CANVAS TIRE		01
02	0503011468	WEEL		01
03	0503010860	AIR CHAMBER 11L 15		01





***civemasa***

**Technical Publications | Elaboration and Revision**  
LEONARDO JOSÉ DA SILVA SOUZA

[www.civemasa.com.br](http://www.civemasa.com.br)

