

DISK HARROWS

GVPF 12/14/16/18D - 02 CYLINDERS

Code: 0501092334
Series: S-0214
Revision: 00
Revision Date: NOVEMBRO/2022

PARTS CATALOGUE

CIVEMASA

PRODUCTS

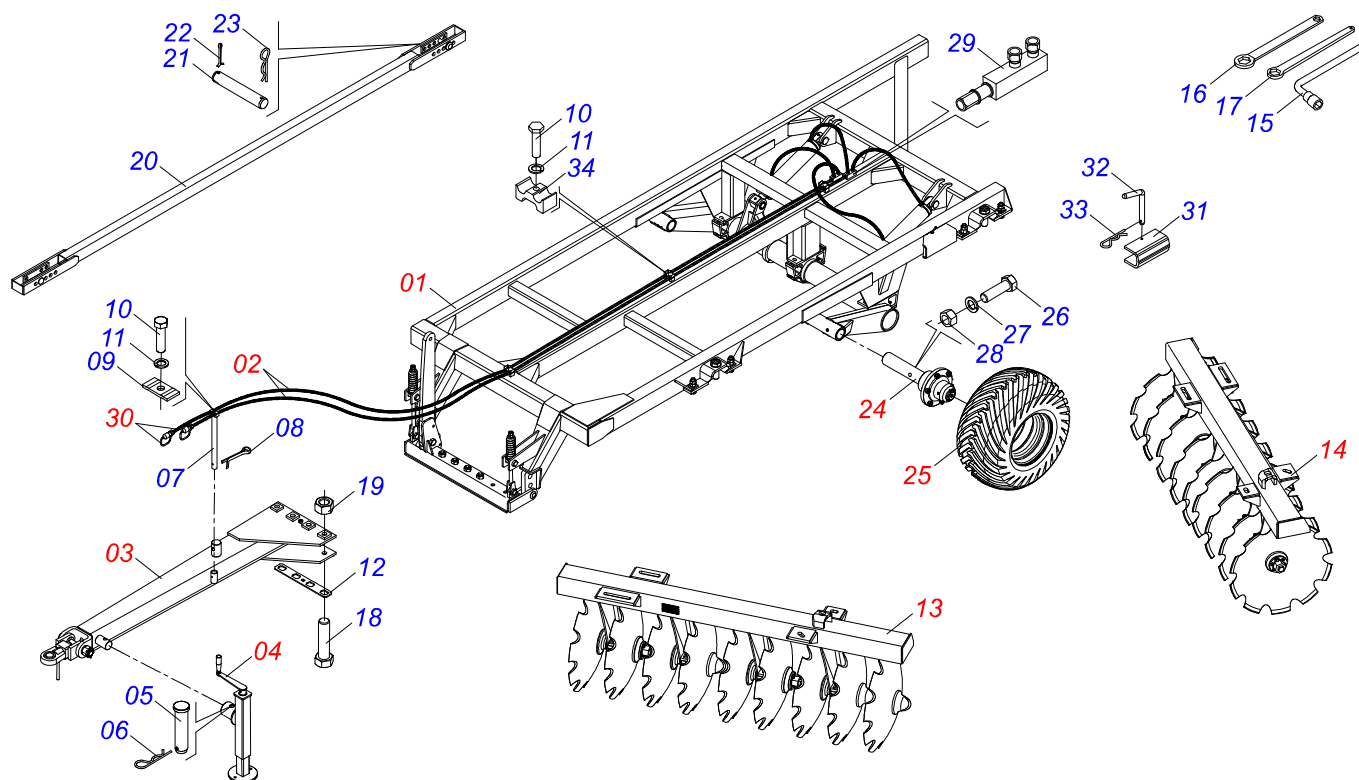
Code	Description
0120020052	GVPF 12 32X12,0 DR 400/60 S-0214
0120020051	GVPF 12 32X9,0 DR 400/60 S-0214
0120020054	GVPF 12 34X12,0 DR 400/60 S-0214
0120020053	GVPF 12 34X9,0 DR 400/60 S-0214
0120020110	GVPF 12X36X12,0 DR DM E 2.1/2 PN400/60 S-0214
0120020067	GVPF 14 32X12,0 DR 400/60 S-0214
0120020066	GVPF 14 32X9,0 DR 400/60 S-0214
0120020069	GVPF 14 34X12,0 DR 400/60 S-0214
0120020068	GVPF 14 34X9,0 DR 400/60 S-0214
0120020111	GVPF 14X36X12,0 DR DM E 2.1/2 PN400/60 S-0214
0120020082	GVPF 16 32X12,0 DR 400/60 S-0214
0120020081	GVPF 16 32X9,0 DR 400/60 S-0214
0120020084	GVPF 16 34X12,0 DR 400/60 S-0214
0120020083	GVPF 16 34X9,0 DR 400/60 S-0214
0120020085	GVPF 16 36X12,0 DR 400/60 S-0214
0120020097	GVPF 18 32X12,0 DR 400/60 S-0214
0120020096	GVPF 18 32X9,0 DR 400/60 S-0214
0120020099	GVPF 18 34X12,0 DR 400/60 S-0214
0120020098	GVPF 18 34X9,0 DR 400/60 S-0214
0120020100	GVPF 18 36X12,0 DR 400/60 S-0214

ATTENTION: IMPORTANT

CIVEMASA reserves the right to improve and/or modify the technical features of its products, without obligation to do the same with those products already sold and without prior knowledge of the dealer or the consumer. The photos are only illustrative.

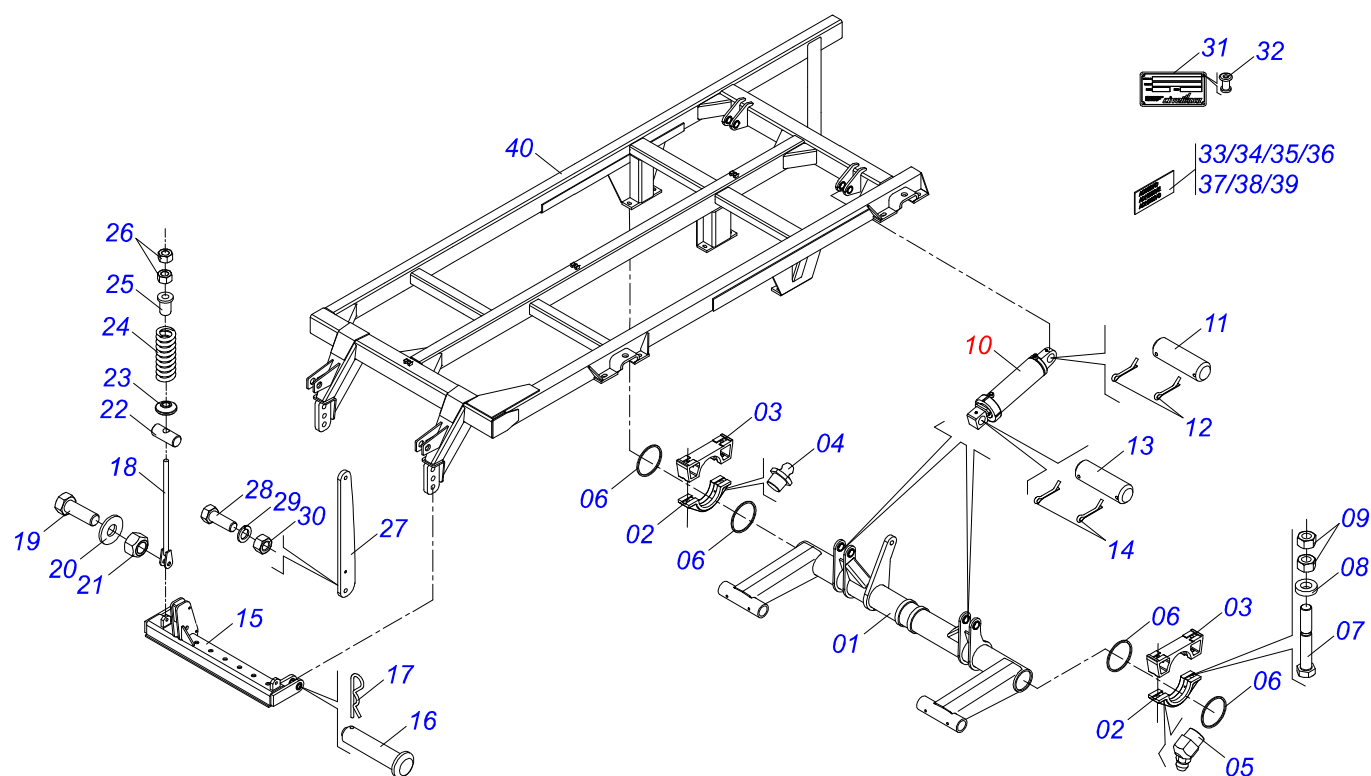
INDEX

0909094805	ASSY FRAME - 12/14/16/18D	1
0521043796	FRAME ASSY	2
0531041451	HYDRAULIC CYLINDER 53,98 X 101,6 X 728 X 400	3
0501053212	HOSE SET	4
0511050262	DRAWBAR ASSEMBLY	5
0511048088	DRAWBAR JACK	6
0909094806	FRAME ASSY	7
0909094807	RIGHT REAR FRAME	8
0909094831	ASSY FRONT/REAR DISC GANG	9
0501048621	OIL BEARING	10
0501055850	CARRYNG WHEEL HUB ASSEMBLY ASSY	11
0501053834	MALE QUICK COUPLER	12
0503061868	400/60-14L WHEEL WITH TIRE	13



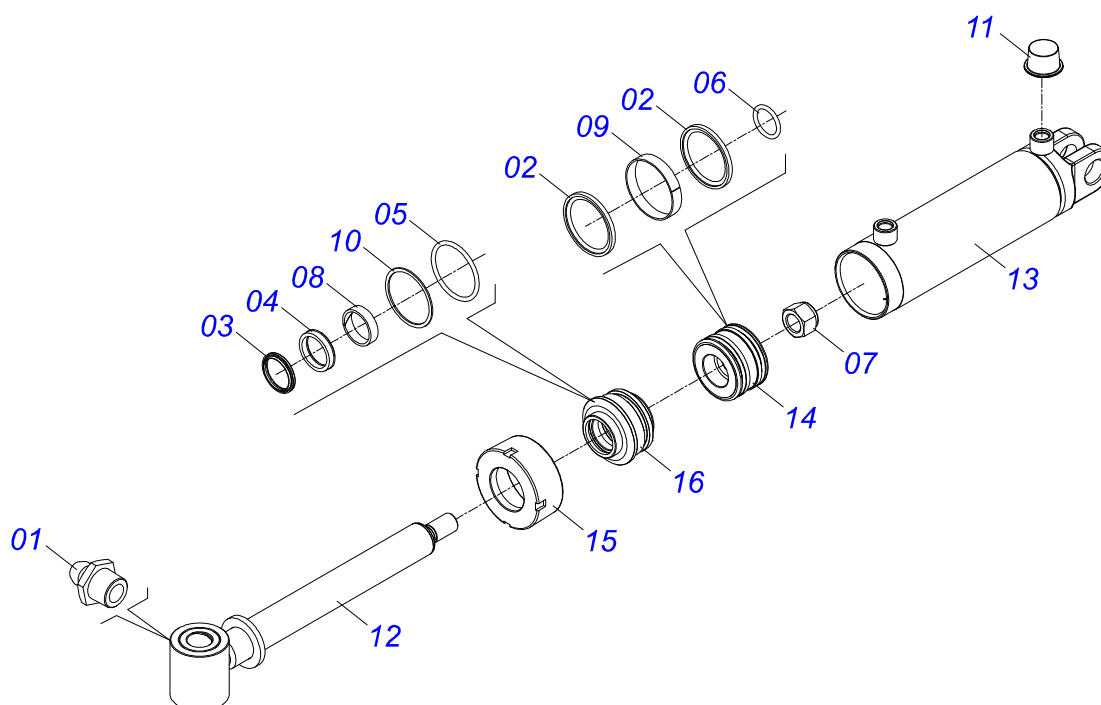
Item	Code	Description	See page	12	14	16	18
01	0521043796	FRAME ASSY	2	01	01	01	01
02	0501053212	HOSE SET	4	01	01	01	01
03	0511050262	DRAWBAR ASSEMBLY	5	01	01	01	01
04	0511048088	DRAWBAR JACK	6	01	01	01	01
05	0561014251	COUPLING SHAFT		01	01	01	01
06	0503030012	HITCH PIN CLIP		01	01	01	01
07	0511060205	SUPPORT HOSE CNS 20104N		01	01	01	01
08	0503012215	5/16" X 2-1/2" COTTERPIN		01	01	01	01
09	0531011180	UPPER BODY CLIP		04	04	04	04
10	0503012555	SCREW 7/16 UNC X 2 CS RT G.7 ZN		04	04	04	04
11	0503010180	7/16" SPRING WASHER		04	04	04	04
12	0521013774	GVMF LOCK		02	02	02	02
13	0909094806	FRAME ASSY	7	01	01	01	01
14	0909094807	RIGHT REAR FRAME	8	01	01	01	01
15	0503018438	1" WRENCH CYLINDRICAL HEX		01	01	01	01
16	0511064004	WRENCH		01	01	01	01
17	0521013902	WRENCH NUT		02	02	02	02
18	0503012174	1-1/4" X 8-1/4" BOLT		04	04	04	04
19	0503012181	1.1/4" NUT		04	04	04	04
20	0511060527	STABILIZER BAR		01	01	01	01
21	0521013776	PIN SEM HEAD		02	02	02	02
22	0503010362	1/8 X 1.1/4 COTTERPIN		02	02	02	02
23	0503031464	TM 211 X 3,0 STAPLE		02	02	02	02
24	0501055850	CARRYNG WHEEL HUB ASSEMBLY ASSY	11	02	02	02	02
25	0503061868	400/60-14L WHEEL WITH TIRE	13	02	02	02	02
26	0503011084	3/4" X 5" BOLT		02	02	02	02
27	0503011442	3/4" SPRING WASHER		02	02	02	02
28	0503812183	NUT		02	02	02	02
29	0501074276	TERMINAL CONNECTION		02	02	02	02
30	0501053834	MALE QUICK COUPLER	12	02	02	02	02
31	0591018207	LOCK FOR TRANSPORT		02	02	02	02

Item	Code	Description	See page	12	14	16	18
32	0541016844	FIXER LOCK		02	02	02	02
33	0503031470	TM 251 X 4,0 STAPLE		02	02	02	02
34	0502012702	BODY SUPPORT CLAMP		04	04	04	04

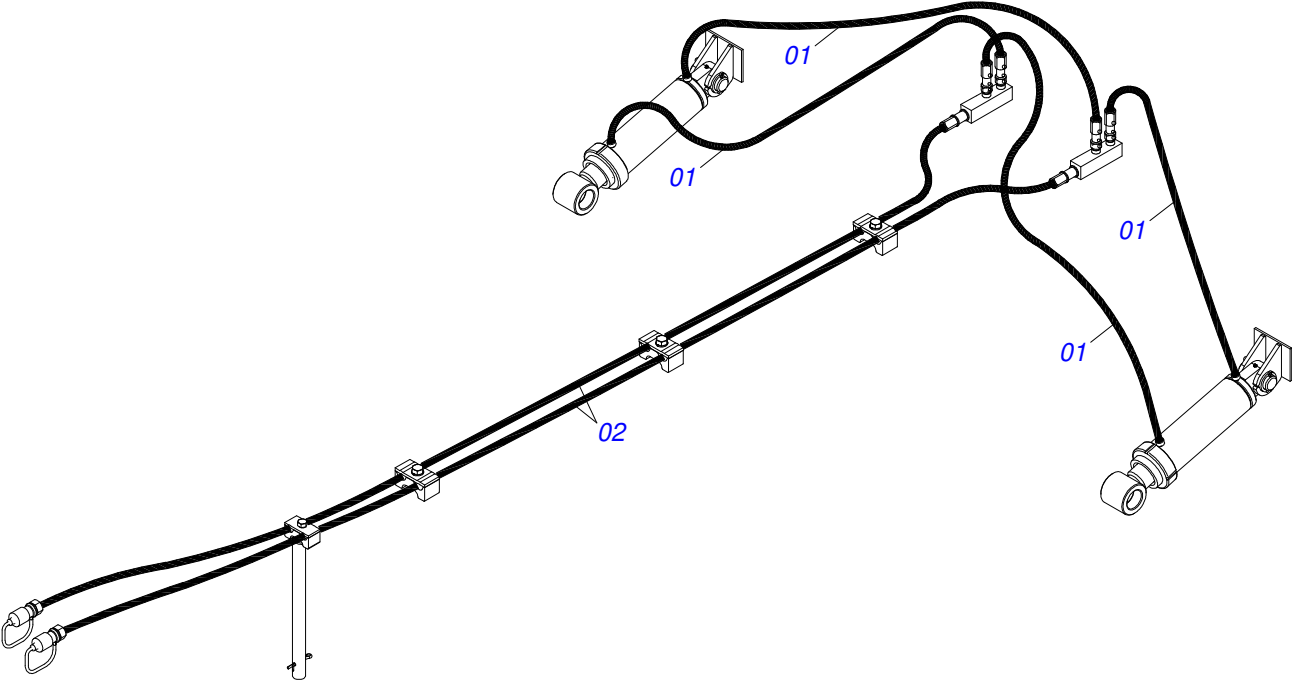


Item	Code	Description	See page	QT
01	0521064270	WHEEL AXLE		01
02	0502011724	INF BEARING SEMI		03
03	0502011725	UPPER BEARING SEMI		03
04	0503010002	1800 GREASE FITTING		06
05	0503010003	1845 GREASE FITTING		06
06	0503012222	FELT RING		06
07	0511016281	3/4" X 8" BOLT		06
08	0521013710	WASHER SEMIMAN		06
09	0503012183	SNC 3/4" ZIN 1K03097 NUT		12
10	0531041451	HYDRAULIC CYLINDER 53,98 X 101,6 X 728 X 400	3	02
11	0521013706	HEADLESS PIN		02
12	0503010010	1/4" X 2.1/2" COTTERPIN		04
13	0591019956	44,45 X 168 HEADLESS PIN		02
14	0503010010	1/4" X 2.1/2" COTTERPIN		04
15	0511060203	DRAWBAR ASSY		01
16	0521013738	PIN WITH HEAD		02
17	0503031479	STAPLE		02
18	0511060124	ASSEMBLY TIME		02
19	0501010500	3/4"X3"BOLT		02
20	0501010322	FLAT WASHER		02
21	0503011255	3/4" LOCK NUT		02
22	0521013759	PIN SPINDLE GUIDE		02
23	0521013760	SPRING SUPPORT		02
24	0503031460	SPRING		02
25	0502011582	SPINDLE GUIDE		02
26	0503012182	1" NUT		04
27	0521014367	TOWER GVPF		01
28	0503012226	1-1/4" X 4" BOLT		01
29	0503011439	1.1/4" SPRING WASHER		01
30	0503012181	1.1/4" NUT		01
31	0503034004	ALUMINUM IDENTIFICATION LABEL		01

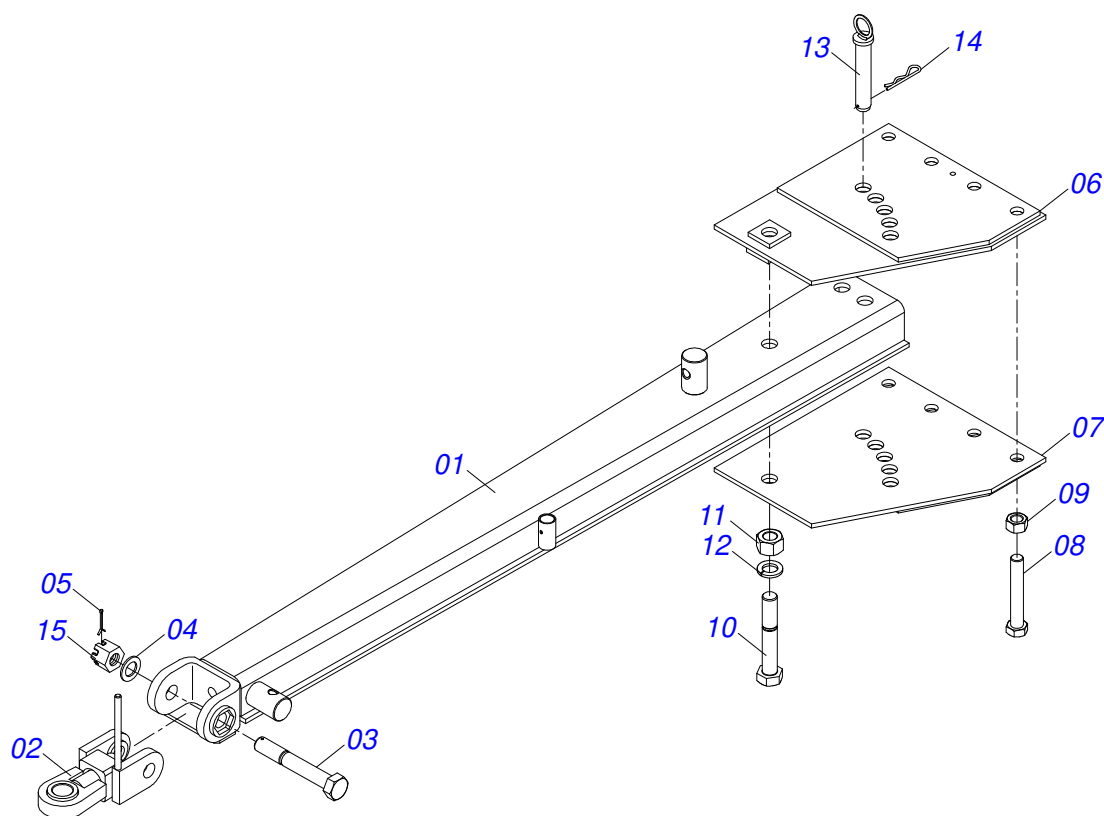
Item	Code	Description	See page	QT
32	0503010001	3.2 X 5.5 RIVET		04
33	0503031738	ADHESIVE LABEL		01
34	0503031428	READ MANUAL DECAL		01
35	0503031739	ADHESIVE LABEL		01
36	0503033038	DANGER SIGN		02
37	0503033647	APPROVED BADGE		01
38	0503033241	CIVEMASA 100 X 400 BADGE		02
39	0503034239	BADGE		02
40	0511060528	FRAME		01



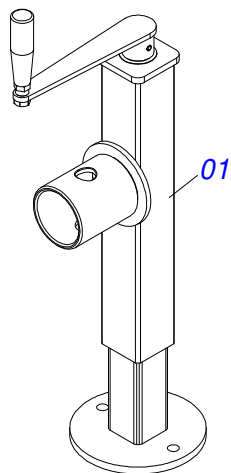
Item	Code	Description	See page	QT
01	0503010002	1800 GREASE FITTING		02
02	0503010043	PACKING 3750-3250		02
03	0503010314	GASKET		01
04	0503010319	D-2125 SCRAPER		01
05	0503010338	2-342 N 3006-9B O'RING		01
06	0503010345	2-218 N 3006-9B O'RING		01
07	0503010817	1.1/4" SELF LOCKING NUT		01
08	0503010973	W2-2500-500 PK O'RING G.E		01
09	0503010994	W2-4000-500 PK RING G.E		01
10	0503011061	8-342 BACK-UP RING		01
11	0503030384	CON PLUG N-001		02
12	0531062835	EXTENDER 53.98 X 609		01
13	0511062253	CYLINDER CASE		01
14	0502011969	53,98 X 101,60 PISTON		01
15	0502010017	4" HEAD		01
16	0502011250	RING OF SUPPORT		01



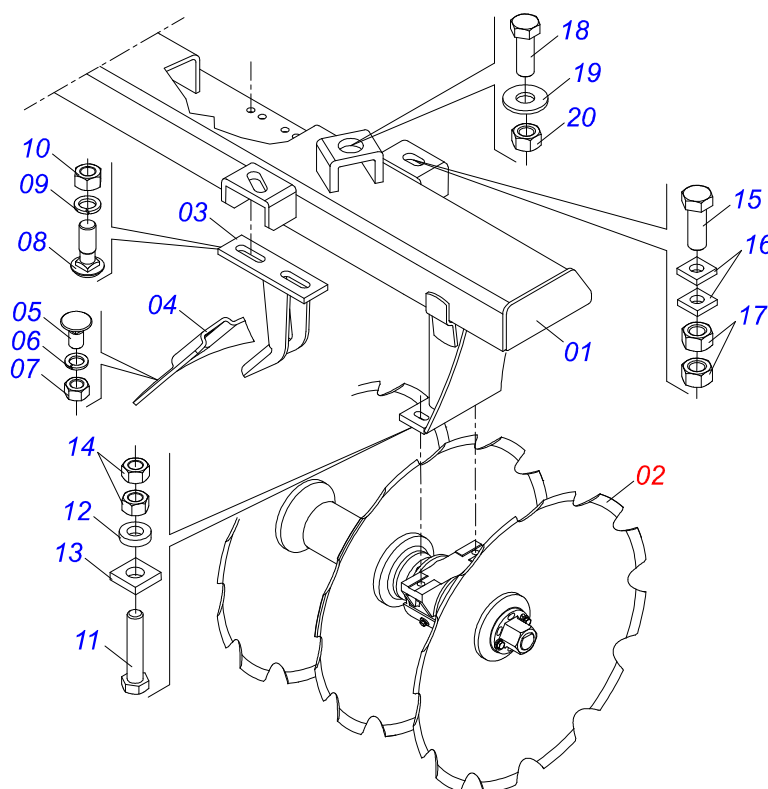
Item	Code	Description	See page	QT
01	0501080801	HOSE		04
02	0501080815	TM-TM HOSE ASSY		02



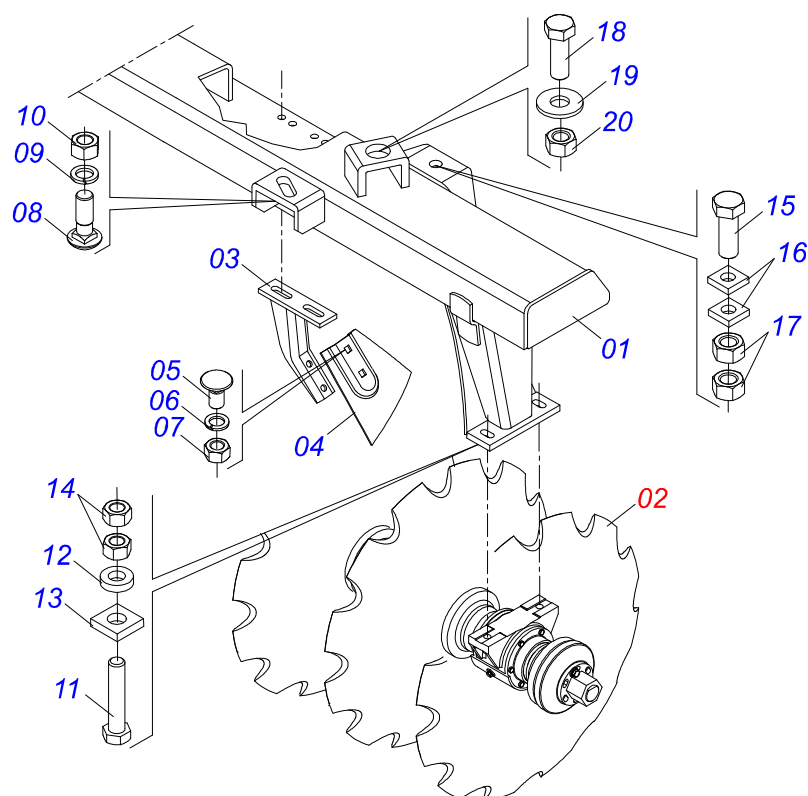
Item	Code	Description	See page	QT
01	0511060300	DRAWBAR		01
02	0521068888	TRACTOR HITCH BODY		01
03	0521013739	BOLT HARNESS		01
04	0501812916	FLAT WASHER		01
05	0503010067	3/16" X 2.1/2" COTTER PIN		01
06	0511060301	PLATE HITCH		01
07	0511060302	PLATE HITCH		01
08	0503012192	1-1/4" X 8 BOLT		04
09	0503012181	1.1/4" NUT		04
10	0503012258	1-1/2" X 9" BOLT		01
11	0501810110	1.1/2 NC 6FPP NUT		01
12	0503013627	1.1/2 SPRING WASHER		01
13	0511060146	PIN FIXER		01
14	0503031479	STAPLE		01
15	0502011592	CASTLE NUT		01



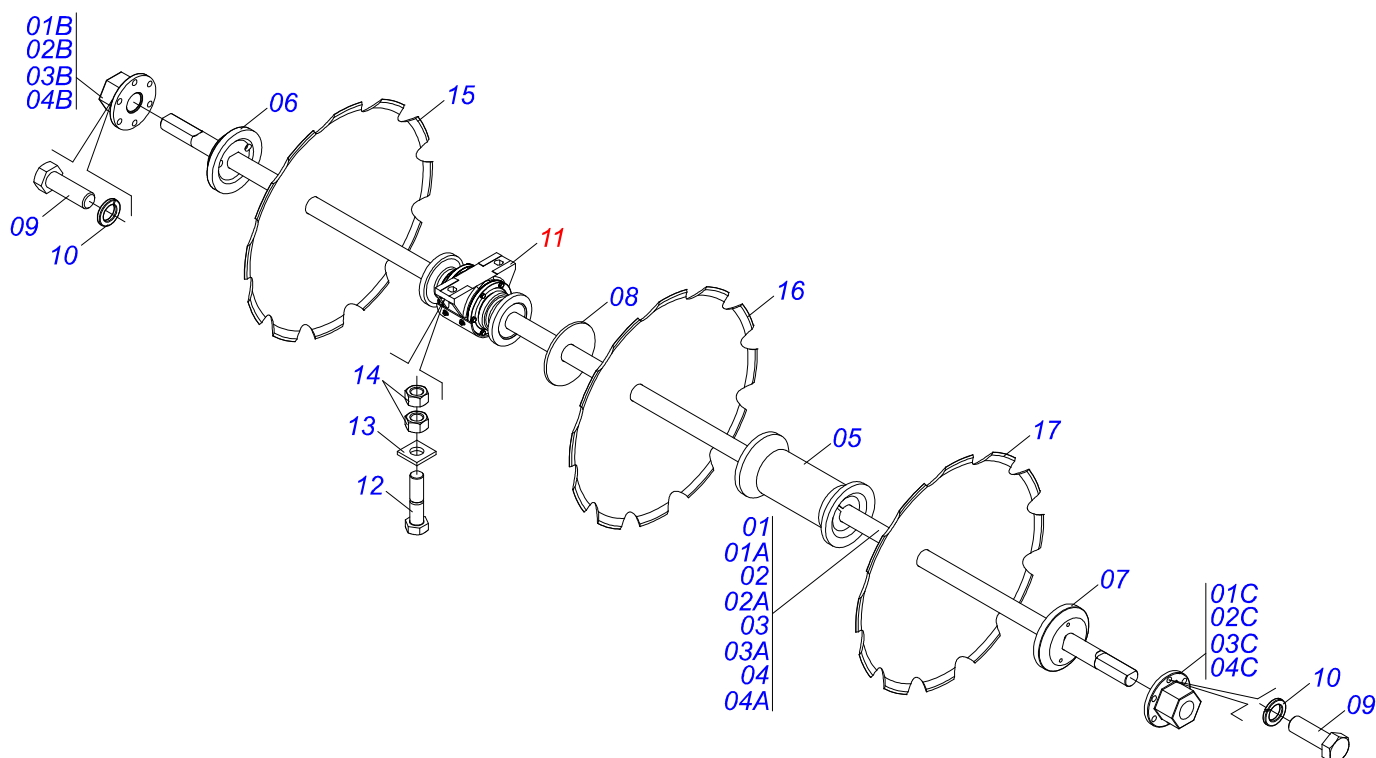
Item	Code	Description	See page	QT
01	0503062227	DRAWBAR JACK		01



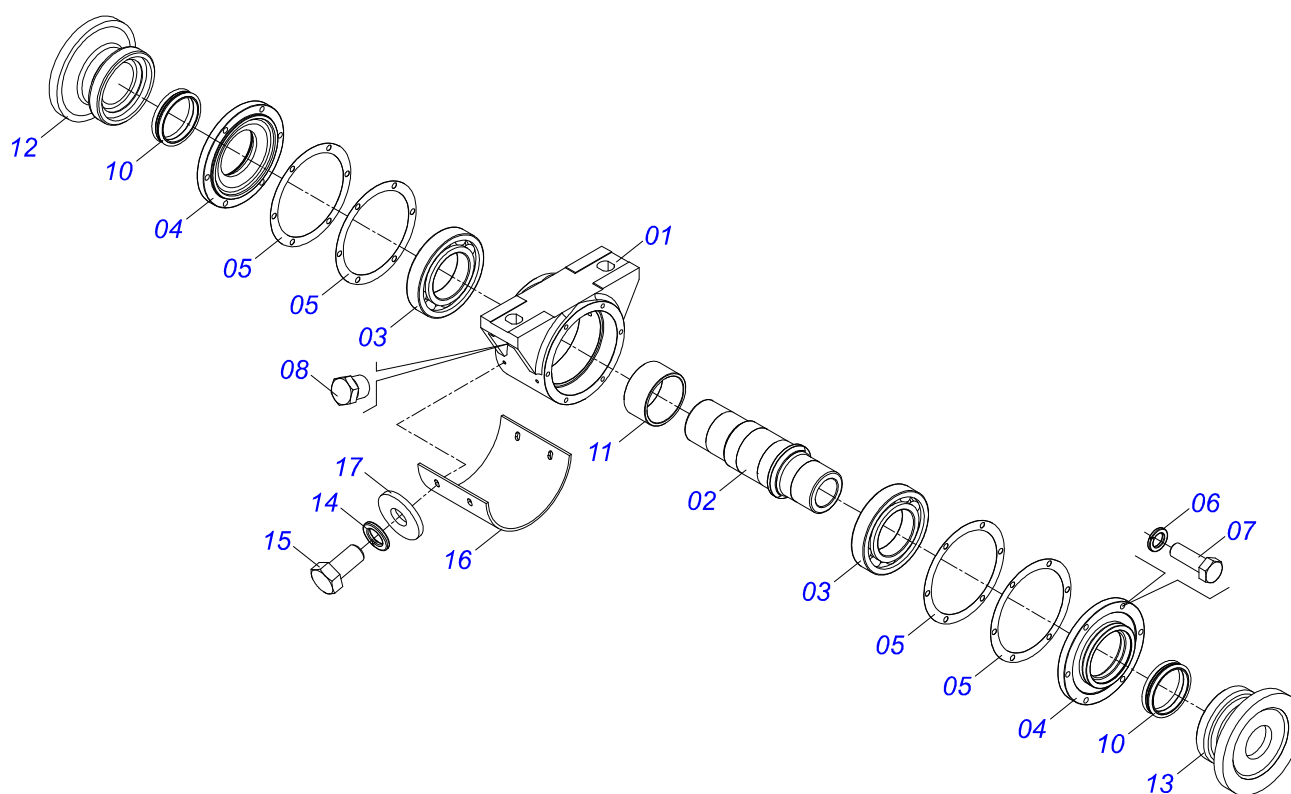
Item	Code	Description	See page	12	14	16	18
01	0511065438	FRONT FRAME - 12		01	00	00	00
01.	0511061553	FRAME FRONT - 14		00	01	00	00
01..	0511061545	FRONT FRAME - 16		00	00	01	00
01...	0511060531	FRONT FRAME - 18		00	00	00	01
02	0909094831	ASSY FRONT/REAR DISC GANG	9	12	14	16	18
03	0511060304	FRONT SUPPORT		06	07	08	09
04	0521013678	FRONT CLEANER		06	07	08	09
05	0503012195	5/8" NUT		12	14	16	18
06	0503010027	5/8" SPRING WASHER		12	14	16	18
07	0503010013	5/8" NUT		12	14	16	18
08	0503012180	FRENCH 3/4" X 2 BOLT		12	14	16	18
09	0503010023	3/4" SPRING WASHER		12	14	16	18
10	0503012183	SNC 3/4" ZIN 1K03097 NUT		12	14	16	18
11	0503013331	3/4 UNC X 4.1/2 C S G.5 ZN BOLT		04	06	08	08
12	0501010937	13,50 X 28 X 3,00 FLAT WASHER		04	06	08	08
13	0521013709	REINFORCING WASHER		04	06	08	08
14	0503012183	SNC 3/4" ZIN 1K03097 NUT		04	06	08	08
15	0503012257	1" X 4-1/4" BOLT		04	04	04	05
16	0521013709	REINFORCING WASHER		08	08	08	10
17	0503012182	1" NUT		08	08	08	12
18	0511063502	HEXAGONAL BOLT		01	01	01	01
19	0521014368	FLAT WASHER		01	01	01	01
20	0502011692	GVMF 60117N 3442029 NUT		01	01	01	01



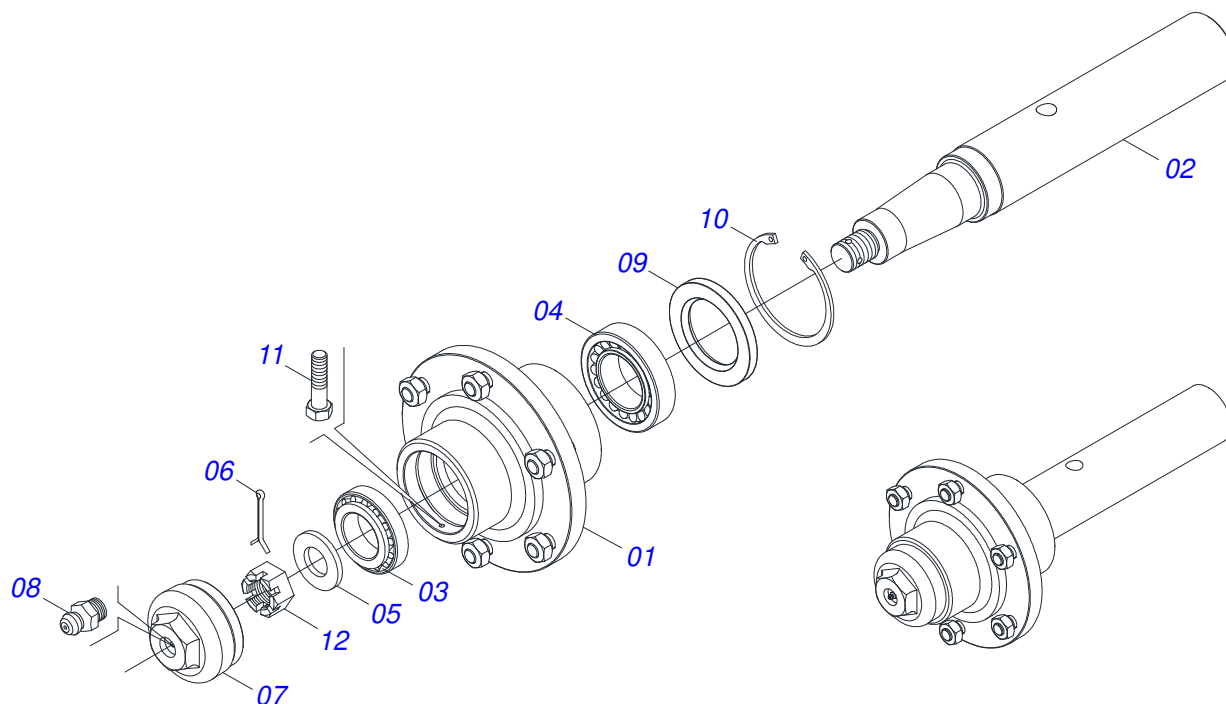
Item	Code	Description	See page	12	14	16	18
01	0511065430	FRAME REAR - 12		01	00	00	00
01.	0511061551	FRAME REAR - 14		00	01	00	00
01..	0511061544	FRAME REAR - 16		00	00	01	00
01...	0511060530	FRAME REAR - 18		00	00	00	01
02	0909094831	ASSY FRONT/REAR DISC GANG	9	12	14	16	18
03	0511060305	REAR SUPPORT		06	07	08	09
04	0521013679	REAR CLEANER		06	07	08	09
05	0503012195	5/8" NUT		12	14	16	18
06	0503010027	5/8" SPRING WASHER		12	14	16	18
07	0503010013	5/8" NUT		12	14	16	18
08	0503012180	FRENCH 3/4" X 2 BOLT		12	14	16	18
09	0503010023	3/4" SPRING WASHER		12	14	16	18
10	0503012183	SNC 3/4" ZIN 1K03097 NUT		12	14	16	18
11	0503013331	3/4 UNC X 4.1/2 C S G.5 ZN BOLT		08	08	08	12
12	0501010937	13,50 X 28 X 3,00 FLAT WASHER		08	08	08	12
13	0521013709	REINFORCING WASHER		08	08	08	12
14	0503012183	SNC 3/4" ZIN 1K03097 NUT		16	16	16	24
15	0503012257	1" X 4-1/4" BOLT		04	04	04	05
16	0521013709	REINFORCING WASHER		08	08	08	10
17	0503012182	1" NUT		08	08	08	12
18	0511063502	HEXAGONAL BOLT		01	01	01	00
19	0521014368	FLAT WASHER		01	01	01	00
20	0502011692	GVMF 60117N 3442029 NUT		01	01	01	00



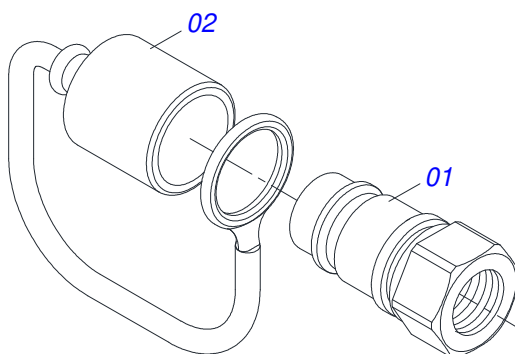
Item	Code	Description	See page	12	14	16	18
01	0511050284	DISC AXLE WHIT NUT		02	00	00	00
01A	0521013939	DISC AXLE		01	00	00	00
01B	0502011659	GVP 50612AD 3452378 AXLE NUT		01	00	00	00
01C	0502011660	GVP 50612AE 3452387 AXLE NUT		01	00	00	00
02	0501059684	2-1/2" X 3010 AXLE		00	02	00	00
02A	0521014883	AXLE DISC		00	01	00	00
02B	0502011659	GVP 50612AD 3452378 AXLE NUT		00	01	00	00
02C	0502011660	GVP 50612AE 3452387 AXLE NUT		00	01	00	00
03	0511050420	DISC AXLE WHIT NUT 2.1/2UNC X 1645		00	00	04	02
03A	0521014224	AXLE DISC		00	00	01	01
03B	0502011659	GVP 50612AD 3452378 AXLE NUT		00	00	01	01
03C	0502011660	GVP 50612AE 3452387 AXLE NUT		00	00	01	01
04	0511050263	DISC AXLE WHIT NUT 2.1/2UNC X 2100		00	00	00	02
04A	0521013899	DISC AXLE		00	00	00	01
04B	0502011659	GVP 50612AD 3452378 AXLE NUT		00	00	00	01
04C	0502011660	GVP 50612AE 3452387 AXLE NUT		00	00	00	01
05	0502011664	SPACER		06	06	04	06
06	0502011669	OUTER FLANGE		02	02	04	04
07	0502011670	INNER FLANGE		02	02	04	04
08	0521013900	CHOCK GVP 50150		04	04	08	08
09	0503010920	1/2 UNC X 1.1/2 C S G.5 ZN BOLT		04	04	08	08
10	0503010019	1/2" SPRING WASHER		04	04	08	08
11	0501048621	OIL BEARING	10	04	06	08	08
12	0503012564	1-1/4" X 5-1/4" BOLT		08	12	16	16
13	0521013901	WASHER		08	12	16	16
14	0503012181	1.1/4" NUT		16	24	32	32
15	0602044004	32" X 0.5" NOTCHED DISC BLADE		12	14	16	18
15.	0602044033	32 X 9MM NOTCHED DISC		12	14	16	18
16	0602046002	34" X 0.5" NOTCHED DISC BLADE		12	14	16	18
16.	0602046001	34" X 0.3" NOTCHED DISC BLADE		12	14	16	18
17	0602048062	36 X 12MM NOTCHED DISC		12	14	16	18



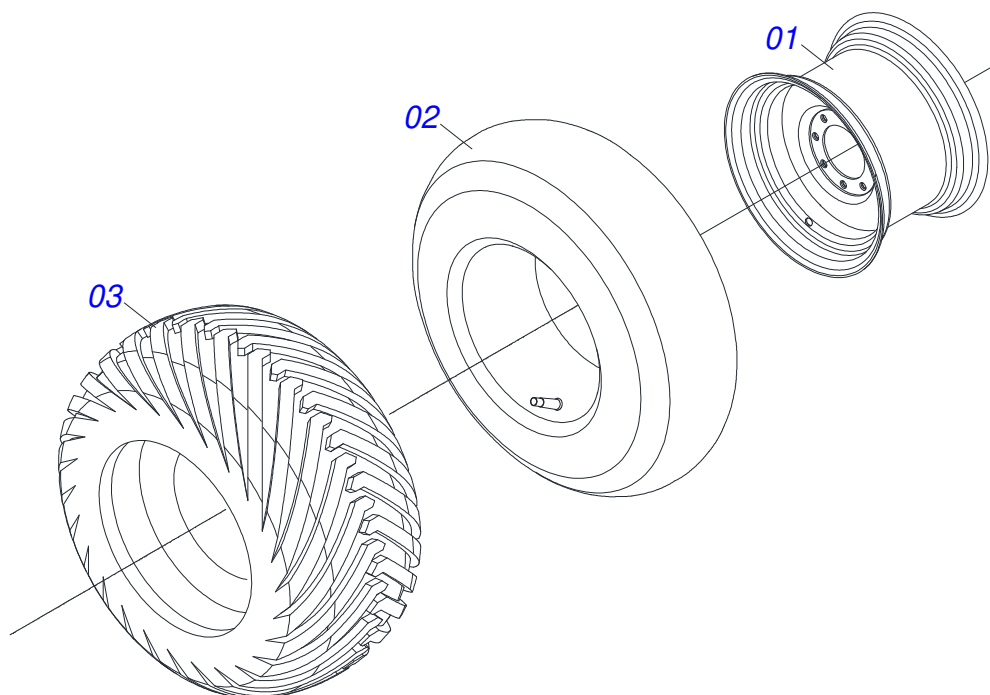
Item	Code	Description	See page	QT
01	0502011811	MR-451 3503106 BODY	01	
02	0502011704	CENTER DEARIN	01	
03	0503012709	6222 C3 ROLLER BEARING	02	
04	0502011677	BEARING COVER	02	
05	0503031499	JOINT BEARIN	04	
06	0503011440	SPRING WASHER	12	
07	0503010920	1/2 UNC X 1.1/2 C S G.5 ZN BOLT	12	
08	0503010856	OIL PLUG	02	
09	3402301247	MINERAL OIL GREASE	02	
10	0503030029	RETAINER LP JB-259	02	
11	0502011693	SPACER	01	
12	0502011702	WASHER CONVEX	01	
13	0502011701	WASHER CONCAVE	01	
14	0503010025	3/8" SPRING WASHER	04	
15	0503011334	BOLT 3/8 UNC X 3/4 CS G.5 ZN	04	
16	0521014353	PLATE PROTECTION	01	
17	0501010984	FLAT WASHER 10,50 X 27 X 3,00 ZN	04	



Item	Code	Description	See page	QT
01	0501110766	HUB CARRYING WHEELS WITH BOLT		01
02	0541014720	CR 7076205/1/1 AXLE		01
03	0503010006	32210 ROLLER BEARING		01
04	0503010005	32212 ROLLER BEARING		01
05	0501010086	FLAT WASHER		01
06	0503010067	3/16" X 2.1/2" COTTER PIN		01
07	0502011647	COVER		01
08	0503010691	1/4" GREASE FITTING		01
09	0503010009	RETAINER 00573-B		01
10	0503012723	502115 RENO RING		01
11	0503010298	1/4" X 1/2" BOLT		01
12	0503012457	UNF 1.1/4" CASTLE NUT		01



Item	Code	Description	See page	QT
01	0503011627	MALE QUICK COUPLER AGR 1/2 NPT		01
02	0503011882	MALE QUICK COUPLER CAP		01



Item	Code	Description	See page	QT
01	0503012916	W-13 X 16,5 HOOP WHEEL		01
02	0503012112	400/60 - 15.5 TR 15 INNER TIRE		01
03	0503013119	CANVAS TIRE		01





civemasa

Technical Publications | Elaboration and Revision

LUIZ CANDIDO

www.civemasa.com.br

