

**DISK HARROWS**

**SGIC 16/18/20/22/24/26/28/30D**

<b>Code:</b>	0501092026
<b>Series:</b>	S-0216
<b>Revision:</b>	00
<b>Revision Date:</b>	SETEMBRO/2021

# PARTS CATALOGUE

***CIVEMASA***

# PRODUCTS

Code	Description
0120160150C	SGIC 16 28X7,5 DR 11L15 EXP S-0216
0120160150	SGIC 16 28X7,5 DR 11L15 S-0216
0120160151C	SGIC 16 30X7,5 DR 11L15 EXP S-0216
0120160151	SGIC 16 30X7,5 DR 11L15 S-0216
0120160152C	SGIC 18 28X7,5 DR 11L15 EXP S-0216
0120160152	SGIC 18 28X7,5 DR 11L15 S-0216
0120160153C	SGIC 18 30X7,5 DR 11L15 EXP S-0216
0120160153	SGIC 18 30X7,5 DR 11L15 S-0216
0120160154C	SGIC 20 28X7,5 DR 11L15 EXP S-0216
0120160154	SGIC 20 28X7,5 DR 11L15 S-0216
0120160155C	SGIC 20 30X7,5 DR 11L15 EXP S-0216
0120160155	SGIC 20 30X7,5 DR 11L15 S-0216
0120160156	SGIC 22 28X7,5 DR 11L15 S-0216
0120160157C	SGIC 22 30X7,5 DR 11L15 EXP S-0216
0120160157	SGIC 22 30X7,5 DR 11L15 S-0216
0120160158C	SGIC 24 28X7,5 DR 11L15 EXP S-0216
0120160158	SGIC 24 28X7,5 DR 11L15 S-0216
0120160160C	SGIC 24 28X7,5 DR 400/60 EXP S-0216
0120160160	SGIC 24 28X7,5 DR 400/60 S-0216
0120160159C	SGIC 24 30X7,5 DR 11L15 EXP S-0216
0120160159	SGIC 24 30X7,5 DR 11L15 S-0216
0120160161	SGIC 24 30X7,5 DR 400/60 S-0216
0120160161C	SGIC 24X30X7,5 DR 400/60 EXP S-0216
0120160162C	SGIC 26 28X7,5 DR 11L15 EXP S-0216
0120160162	SGIC 26 28X7,5 DR 11L15 S-0216
0120160164C	SGIC 26 28X7,5 DR 400/60 EXP S-0216
0120160164	SGIC 26 28X7,5 DR 400/60 S-0216
0120160163C	SGIC 26 30X7,5 DR 11L15 EXP S-0216
0120160163	SGIC 26 30X7,5 DR 11L15 S-0216
0120160165C	SGIC 26 30X7,5 DR 400/60 EXP S-0216

## ATTENTION: IMPORTANT

Civemasa reserves the right to improve and / or modify the technical features of its products, without obligation to do the same with those products already sold and without prior knowledge of the dealer or the consumer.

# PRODUCTS

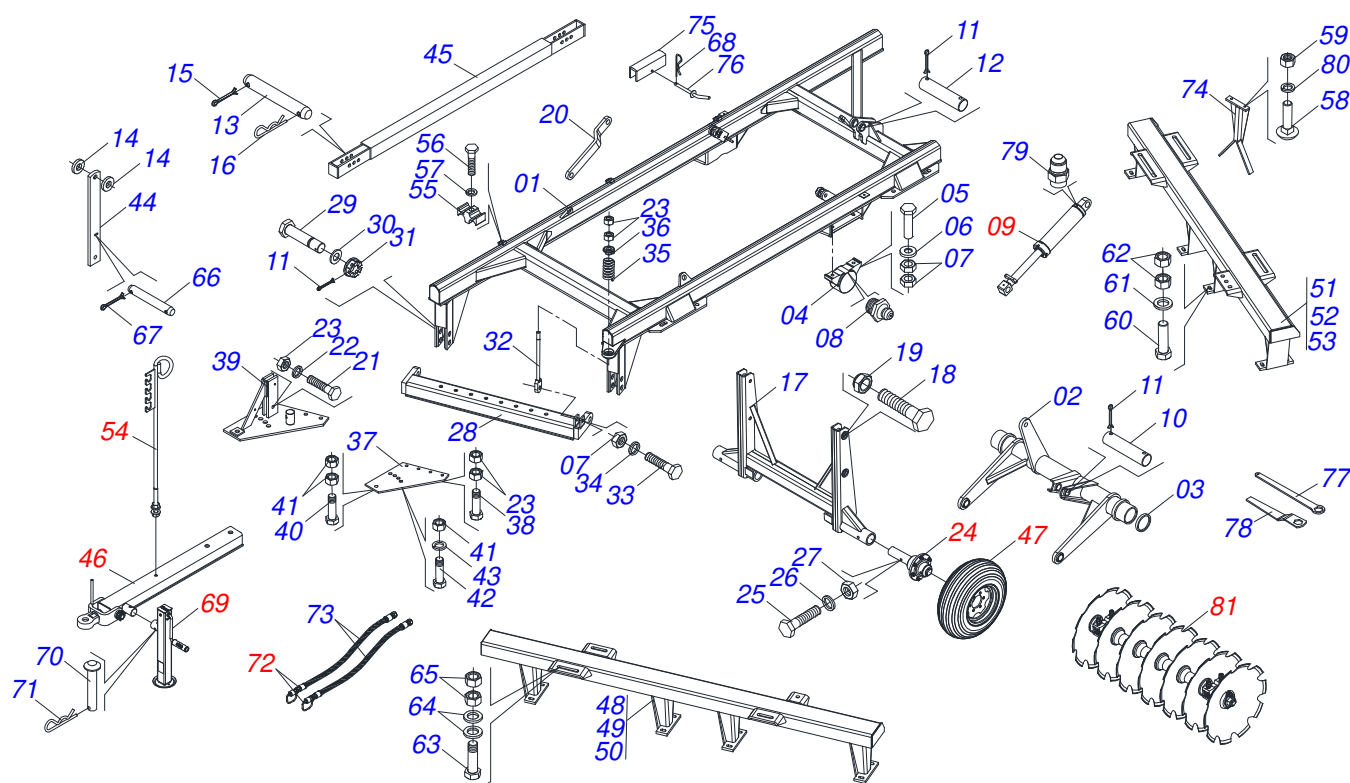
0120160165	SGIC 26 30X7,5 DR 400/60 S-0216
0120160166C	SGIC 28 28X7,5 DR 11L15 EXP S-0216
0120160166	SGIC 28 28X7,5 DR 11L15 S-0216
0120160168C	SGIC 28 28X7,5 DR 400/60 EXP S-0216
0120160168	SGIC 28 28X7,5 DR 400/60 S-0216
0120160182	SGIC 28 28X7,5 DR DMO E 1.3/4 PN11L15 S-0216
0120160167C	SGIC 28 30X7,5 DR 11L15 EXP S-0216
0120160167	SGIC 28 30X7,5 DR 11L15 S-0216
0120160169	SGIC 28 30X7,5 DR 400/60 S-0216
0120160169C	SGIC 28X30X7,5 DR 400/60 EXP S-0216
0120160170C	SGIC 30 28X7,5 DR 11L15 EXP S-0216
0120160170	SGIC 30 28X7,5 DR 11L15 S-0216
0120160172C	SGIC 30 28X7,5 DR 400/60 EXP S-0216
0120160172	SGIC 30 28X7,5 DR 400/60 S-0216
0120160171C	SGIC 30 30X7,5 DR 11L15 EXP S-0216
0120160171	SGIC 30 30X7,5 DR 11L15 S-0216
0120160173C	SGIC 30 30X7,5 DR 400/60 EXP S-0216
0120160173	SGIC 30 30X7,5 DR 400/60 S-0216

## ATTENTION: IMPORTANT

Civemasa reserves the right to improve and / or modify the technical features of its products, without obligation to do the same with those products already sold and without prior knowledge of the dealer or the consumer.

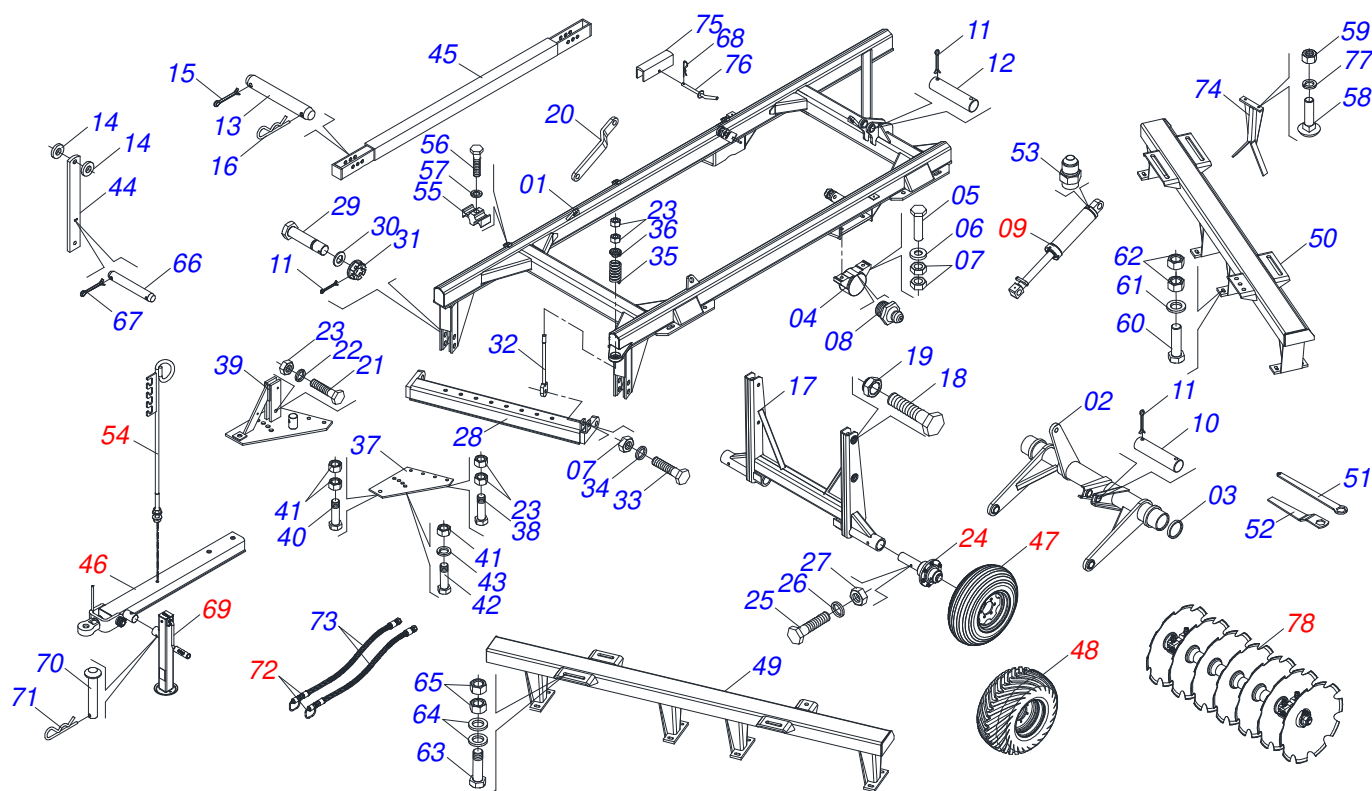
# INDEX

0909093539	ASSY FRAME - 16/18/20/22D	.....	1
0909093540	ASSY FRAME - 24/26/28/30D	.....	2
0511050170	HARNESS ASSY	.....	3
0501040257	3/4 X 1200 HOSE HOLDER A	.....	4
0501048562	HYDRAULIC CYLINDER 53,98X101,6X630X300	.....	5
0511048088	DRAWBAR JACK	.....	6
0501054685	WHEELS HUB ASSY	.....	7
0501054654	WHEEL HUB CR 70M	.....	8
0501055850	CARRYNG WHEEL HUB ASSEMBLY SET	.....	9
0501053834	MALE QUICK COUPLER WITH CAP - 1/2 NPT	.....	10
0909093541	GANG DISC - 16/18/20/22/24/26/28/30D	.....	11
0511040113	AGRICULTURAL BEARING	.....	12
0531041583	AGRICULTURAL BEARING	.....	13
0531052860	AGRICULTURAL BEARING	.....	14



Item	Code	Description	See page	16 18 20
01	0511064756	FRAME		01 01 01
02	0511060191	WHEEL AXLE		01 01 01
03	0503012223	FELT RING		02 02 02
04	0502011583	BEARING AXLE		02 02 02
05	0503010901	3/4UNC 3.1/2 BOLT		04 04 04
06	0521013710	WASHER SEMIMAN		04 04 04
07	0503012183	SNC 3/4\" ZIN 1K03097 NUT		10 10 10
08	0503010002	1800 GREASE FITTING		02 02 02
09	0501048562	HYDRAULIC CYLINDER 53,98X101,6X630X300	5	01 01 01
10	0521013707	HEADLESS PIN		01 01 01
11	0503010010	1/4\" X 2.1/2\" COTTERPIN		06 06 06
12	0521013706	HEADLESS PIN		01 01 01
13	0521013703	PIN FREE HEAR		02 02 02
14	0521015518	BOOST		04 04 04
15	0503010038	3/16 X 2 COTTERPIN		02 02 02
16	0503031470	TM 251 X 4,0 STAPLE		02 02 02
17	0511060142	160303D 3591977 HUB AND SPINDLE ASSY		01 01 01
18	0501811547	BOLT		04 04 04
19	0503014182	SELF-ADJUSTING NUT		04 04 04
20	0511063681	ARM		02 02 02
21	0503011432	BOLT		03 03 03
22	0503010012	1\" SPRING WASHER		05 05 05
23	0503012182	1\" NUT		03 03 03
24	0501054685	WHEELS HUB ASSY	7	02 02 02
25	0501010163	5/8\" X 4-1/2\" BOLT		02 02 02
26	0503010027	5/8\" SPRING WASHER		02 02 02
27	0503010013	5/8\" NUT		02 02 02
28	0511060115	DRAWBAR		01 01 01
29	0501816416	BOLT		02 02 02
30	0551012215	FLAT WASHER		02 02 02
31	0501811301	CASTLE NUT		02 02 02

Item	Code	Description	See page	16 18 20
32	0511060124	ASSEMBLY TIME		01 01 01
33	0501810500	BOLT		01 01 01
34	0503011442	3/4" SPRING WASHER		01 01 01
35	0503031460	SPRING		01 01 01
36	0502011582	SPINDLE GUIDE		01 01 01
37	0511060125	BOTTOM PLATE HITCH		01 01 01
38	0501010219	1" X 7-1/2" BOLT		04 04 04
39	0511060126	TOP PLATE HITCH		01 01 01
40	0501814174	BOLT		01 01 01
41	0503012181	1.1/4" NUT		02 02 02
42	0503012192	1-1/4" X 8 BOLT		01 01 01
43	0503011439	1.1/4" SPRING WASHER		01 01 01
44	0521013673	TOWER		01 01 01
45	0511060127	BEAM STABILIZER		01 01 01
46	0511050170	HARNESS ASSY	3	01 01 01
47	0503061864	WHEEL SET		02 02 02
48	0511060478	FRONT FRAME ASSY - 16		01 00 00
49	0511060237	FRONT FRAME ASSY - 18		00 01 00
50	0511060112	FRONT FRAME ASSY - 20		00 00 01
51	0511060479	REAR FRAME ASSY - 16		01 00 00
52	0511060238	REAR FRAME ASSY - 18		00 01 00
53	0511060113	REAR FRAME ASSY - 20		00 00 01
54	0501040257	3/4 X 1200 HOSE HOLDER A	4	01 01 01
55	0502012702	BODY SUPPORT CLAMP		03 03 03
56	0503012555	SCREW 7/16 UNC X 2 CS RT G.7 ZN		03 03 03
57	0503010180	7/16" SPRING WASHER		03 03 03
58	0503019588	BOLT		20 22 24
59	0503012682	1/2" BSW NUT		20 22 24
60	0503010901	3/4UNC 3.1/2 BOLT		16 16 16
61	0521013710	WASHER SEMIMAN		16 16 16
62	0503012183	SNC 3/4" ZIN 1K03097 NUT		32 32 32
63	0503011432	BOLT		08 08 08
64	0521015523	BOOST		16 16 16
65	0503012182	1" NUT		16 16 16
66	0521013812	PIN FREE HEAD		01 01 01
67	0503010362	1/8" X 1.1/4" COTTERPIN		01 01 01
68	0503031464	TM 211 X 3,0 STAPLE		02 02 02
69	0511048088	DRAWBAR JACK	6	01 01 01
70	0561014251	COUPLING SHAFT		01 01 01
71	0503030012	HAIR PIN		01 01 01
72	0501053834	MALE QUICK COUPLER WITH CAP - 1/2 NPT	10	02 02 02
73	0501080640	3/8 X 7200 TC-TM HOSE		02 02 02
74	0511060122	SAC 31000 SCRAPER		10 10 12
75	0521013685	LOCK PISTON		01 01 01
76	0511060137	ASSEMBLY LOCK PIN		01 01 01
77	0531013656	WRENCH		01 01 01
78	0501011431	1-3/4" GANG BOLT WRENCH		02 02 02
79	0551012528	ADAPTER (GND)		02 02 02
80	0503010019	1/2" SPRING WASHER		48 48 50
81	0909093541	GANG DISC - 16/18/20/22/24/26/28/30D	11	01 01 01

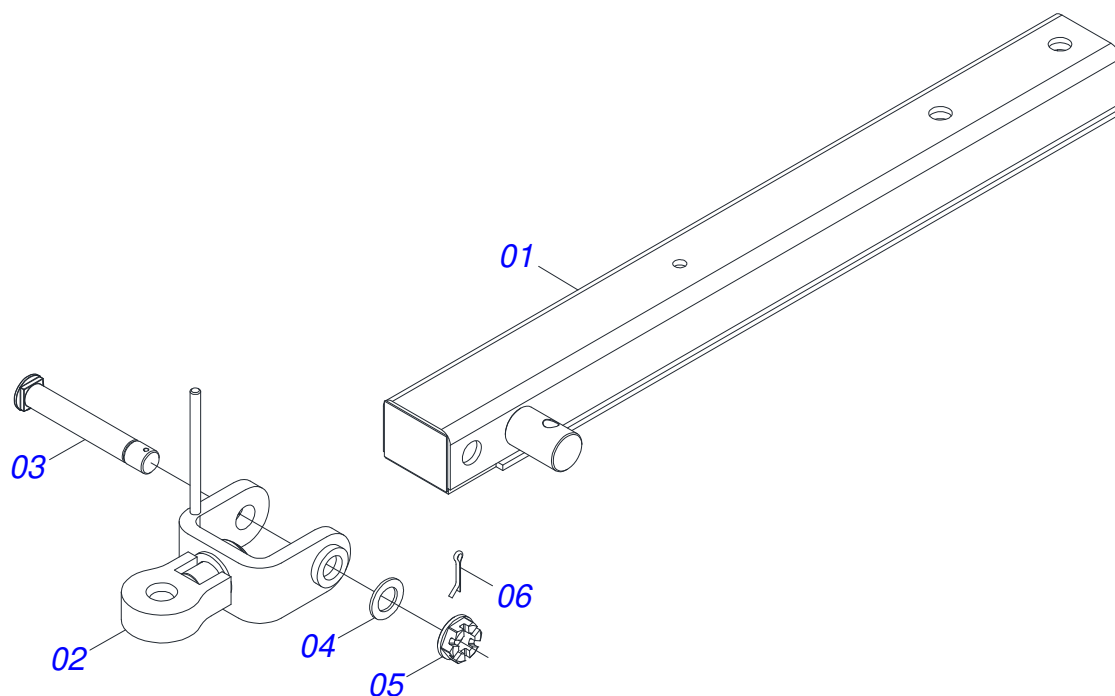


Item	Code	Description	See page	24	26	28	30
01	0511064731	FRAME		01	01	01	01
02	0511060132	WHEEL AXLE		01	01	01	01
03	0503012260	FELT RING		02	02	02	02
04	0502011587	BEARING AXLE		02	02	02	02
05	0503810797	BOLT		04	04	04	04
06	0521013710	WASHER SEMIMAN		04	04	04	04
07	0503012183	SNC 3/4" ZIN 1K03097 NUT		10	10	10	10
08	0503010002	1800 GREASE FITTING		02	02	02	02
09	0501048562	HYDRAULIC CYLINDER 53,98X101,6X630X300	5	01	01	01	01
10	0521013707	HEADLESS PIN		01	01	01	01
11	0503010010	1/4" X 2.1/2" COTTERPIN		06	06	06	06
12	0521013706	HEADLESS PIN		01	01	01	01
13	0521013703	PIN FREE HEAR		02	02	02	02
14	0521015518	BOOST		04	04	04	04
15	0503010038	3/16 X 2 COTTERPIN		02	02	02	02
16	0503031470	TM 251 X 4,0 STAPLE		02	02	02	02
17	0511069690	RODE SET		01	00	01	00
17.	0511060120	RODE SET		00	01	00	01
18	0501811547	BOLT		04	04	04	04
19	0503014182	SELF-ADJUSTING NUT		04	04	04	04
20	0511063681	ARM		02	02	02	02
21	0503011432	BOLT		03	03	03	03
22	0503011438	SPRING WASHER		05	05	05	05
23	0503012182	1" NUT		03	03	03	03
24	0501055850	CARRYNG WHEEL HUB ASSEMBLY SET	9	02	00	02	00
24.	0501054654	WHEEL HUB CR 70M	8	00	02	00	02
25	0503811084	BOLT		02	00	02	00
25.	0501810452	BOLT		00	02	00	02
26	0503011442	3/4" SPRING WASHER		02	00	02	00
26.	0503011445	SPRING WASHER		00	02	00	02
27	0503812183	NUT		02	00	02	00

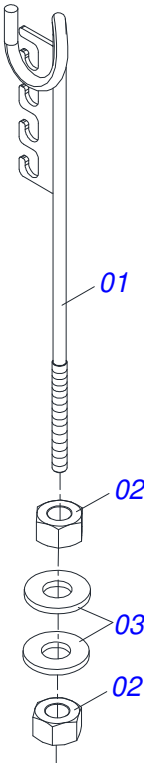
Item	Code	Description	See page	24	26	28	30
27.	0503010013	5/8" NUT		00	02	00	02
28	0511060143	TRACTION BAR BODY		01	01	01	01
29	0501810340	BOLT		02	00	02	00
29.	0501816416	BOLT		00	02	00	02
30	0551012215	FLAT WASHER		00	02	00	02
30.	0501812916	FLAT WASHER		02	00	02	00
31	0501811301	CASTLE NUT		02	02	02	02
32	0511060124	ASSEMBLY TIME		01	01	01	01
33	0501810500	BOLT		01	01	01	01
34	0503011442	3/4" SPRING WASHER		01	01	01	01
35	0503031460	SPRING		01	01	01	01
36	0502011582	SPINDLE GUIDE		01	01	01	01
37	0511060125	BOTTOM PLATE HITCH		01	01	01	01
38	0501010219	1" X 7-1/2" BOLT		04	04	04	04
39	0511060126	TOP PLATE HITCH		01	01	01	01
40	0501814174	BOLT		01	01	01	01
41	0503012181	1.1/4" NUT		02	02	02	02
42	0503012192	1-1/4" X 8 BOLT		01	01	01	01
43	0503011439	1.1/4" SPRING WASHER		01	01	01	01
44	0521013673	TOWER		01	01	01	01
45	0511060127	BEAM STABILIZER		01	01	01	01
46	0511050170	HARNESS ASSY	3	01	01	01	01
47	0503061864	WHEEL SET		02	02	02	02
48	0503061868	14L WHEEL AND TIRE		02	02	02	02
49	0511060239	FRONT FRAME - 24		01	00	00	00
49.	0511060117	FRONT FRAME ASSY - 26		00	01	00	00
49..	0511060481	FRONT FRAME ASSY - 28		00	00	01	00
49...	0511061464	FRONT FRAME ASSY - 30		00	00	00	01
50	0511060240	REAR FRAME - 24		01	00	00	00
50.	0511060118	REAR FRAME ASSY - 26		00	01	00	00
50..	0511060482	REAR FRAME ASSY - 28		00	00	01	00
50...	0511061465	REAR FRAME ASSY - 30		00	00	00	01
51	0531013656	WRENCH		01	01	01	01
52	0501011431	1-3/4" GANG BOLT WRENCH		02	02	02	02
53	0551012528	ADAPTER (GND)		02	02	02	02
54	0501040257	3/4 X 1200 HOSE HOLDER A	4	01	01	01	01
55	0502012702	BODY SUPPORT CLAMP		03	03	03	03
56	0503012555	SCREW 7/16 UNC X 2 CS RT G.7 ZN		03	03	03	03
57	0503010180	7/16" SPRING WASHER		03	03	03	03
58	0503019588	BOLT		32	36	38	40
59	0503012682	1/2" BSW NUT		32	36	38	40
60	0503010901	3/4UNC 3.1/2 BOLT		16	16	16	16
61	0521013710	WASHER SEMIMAN		16	16	16	16
62	0503012183	SNC 3/4" ZIN 1K03097 NUT		32	32	32	32
63	0503011432	BOLT		08	08	08	08
64	0521015523	BOOST		16	16	16	16
65	0503012182	1" NUT		16	16	16	16
66	0521013812	PIN FREE HEAD		01	01	01	01
67	0503010362	1/8" X 1.1/4" COTTERPIN		01	01	01	01
68	0503031464	TM 211 X 3,0 STAPLE		02	02	02	02
69	0511048088	DRAWBAR JACK	6	01	01	01	01
70	0561014251	COUPLING SHAFT		01	01	01	01
71	0503030012	HAIR PIN		01	01	01	01
72	0501053834	MALE QUICK COUPLER WITH CAP - 1/2 NPT	10	02	02	02	02
73	0501080640	3/8 X 7200 TC-TM HOSE		02	02	02	02
74	0511060122	SAC 31000 SCRAPER		16	18	20	20
75	0521013685	LOCK PISTON		01	01	01	01
76	0511060137	ASSEMBLY LOCK PIN		01	01	01	01
77	0503010019	1/2" SPRING WASHER		48	48	48	50



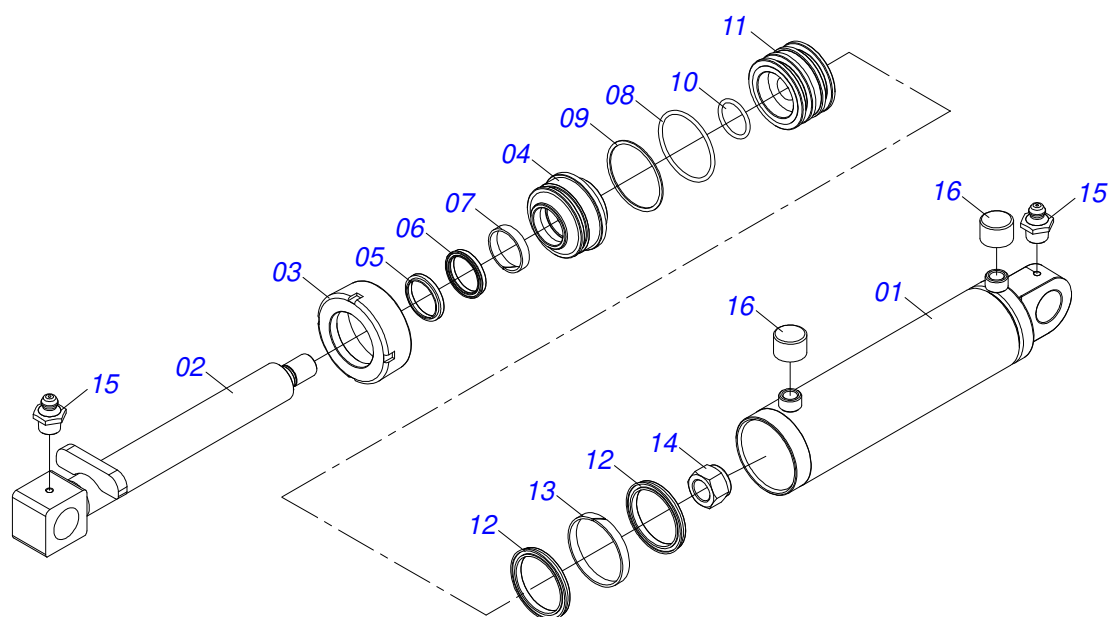
Item	Code	Description	See page	24	26	28	30
78	0909093541	GANG DISC - 16/18/20/22/24/26/28/30D	11	01	01	01	01



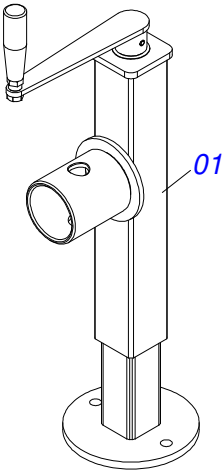
Item	Code	Description	See page	QT
01	0511060119	HARNESS		01
02	0521062956	HITCH		01
03	0561018588	COUPLING SHAFT		01
04	0501011301	1.1/2 UNC 6FPP 2.5/16 NUT		01
05	0501012916	FLAT WASHER 38,50 X 66 X 4,75 ZN		01
06	0503010010	1/4" X 2.1/2" COTTERPIN		01



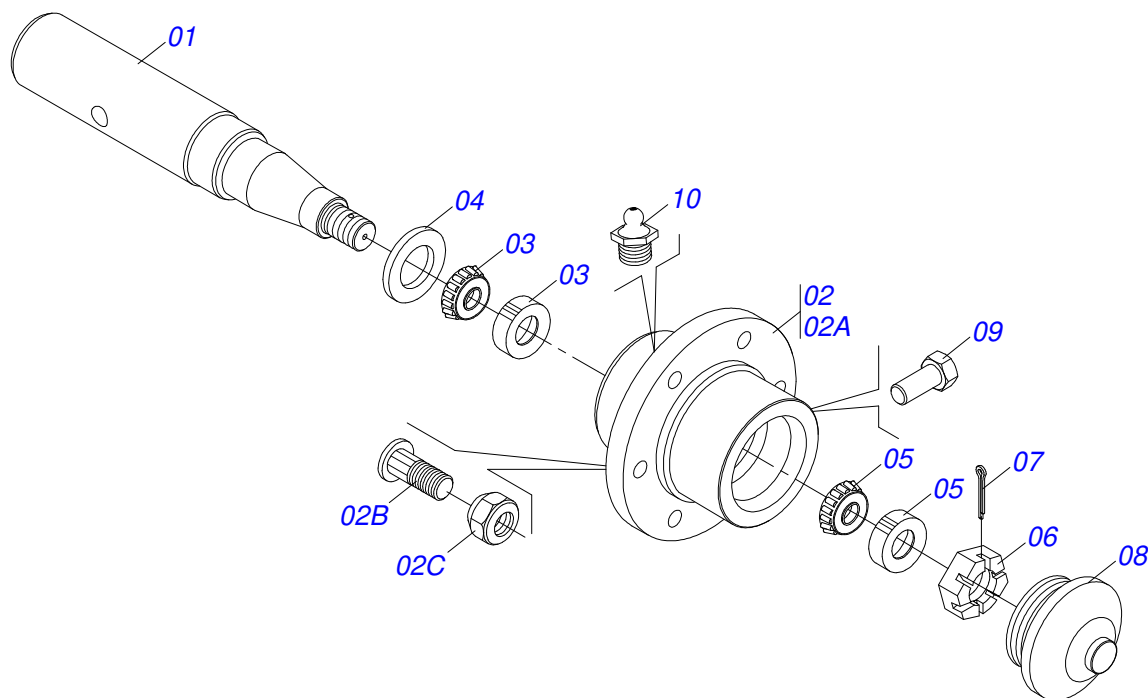
Item	Code	Description	See page	QT
01	0511067334	HOSE SOPPORT ASSY		01
02	0503010014	3/4" NUT		02
03	0501010322	FLAT WASHER		02



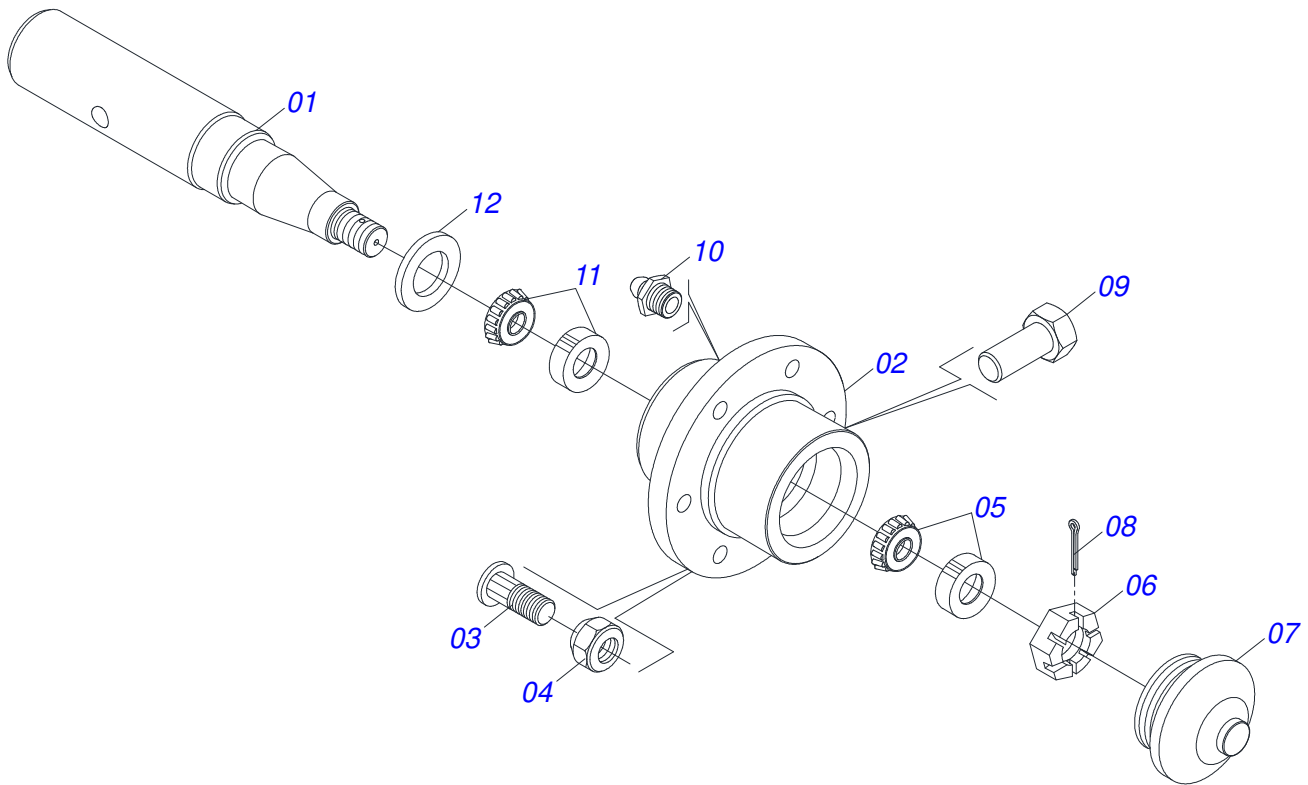
Item	Code	Description	See page	QT
01	0511062252	101,6 X 418 CYLINDER CASE		01
02	0511062250	53,98 X 509 TURNBUCLE		01
03	0502010017	4" HEAD		01
04	0502011250	RING OF SUPPORT		01
05	0503010319	D-2125 SCRAPER		01
06	0503010314	GASKET		01
07	0503010973	W2-2500-500 PK O'RING G.E		01
08	0503011061	8-342 BACK-UP RING		01
09	0503010338	2-342 N 3006-9B O'RING		01
10	0503010345	2-218 N 3006-9B O'RING		01
11	0502011969	53,98 X 101,60 PISTON		01
12	0503010043	PACKING 3750-3250		02
13	0503010994	W2-4000-500 PK RING G.E		01
14	0503010817	1.1/4" SELF LOCKING NUT		01
15	0503010002	1800 GREASE FITTING		02
16	0503030384	CON PLUG N-001		02



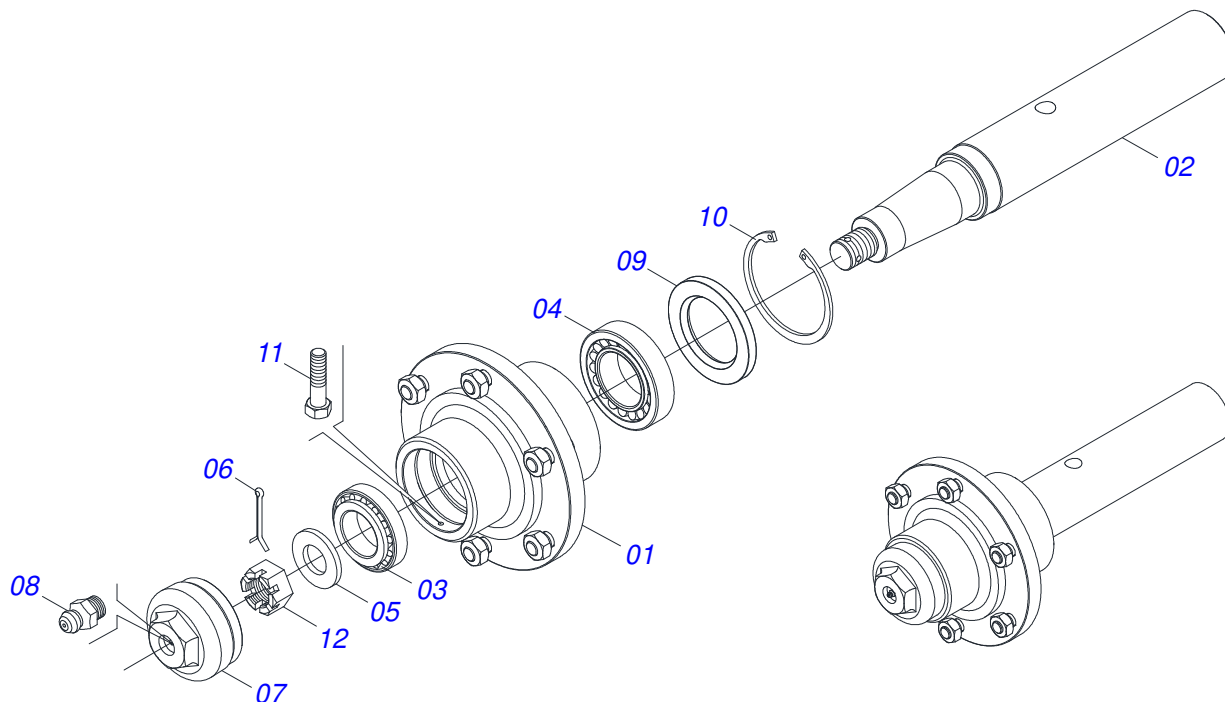
Item	Code	Description	See page	QT
01	0503062227	DRAWBAR JACK		01



Item	Code	Description	See page	QT
01	0531019478	CR 30M/1 AXLE	01	
02	0501110768	HUB CARRYING WHEELS WITH BOLT	01	
02A	0502011389	BOX	01	
02B	0501010186	WHEEL SCREW 5/8UNF X 2.1/8CR	06	
02C	0503010064	5/8 UNF CONIC NUT	06	
03	0503010005	32212 ROLLER BEARING	01	
04	0503010009	RETAINER 00573-B	01	
05	0503010006	32210 ROLLER BEARING	01	
06	0501010888	1.3/4" 2.5/16" CASTLE NUT	01	
07	0503010010	1/4" X 2.1/2" COTTERPIN	01	
08	0502020593	COVER	01	
09	0503010295	SCREW 5/16 UNC X 5/8 CS G.2 ZN	01	
10	0503010002	1800 GREASE FITTING	01	

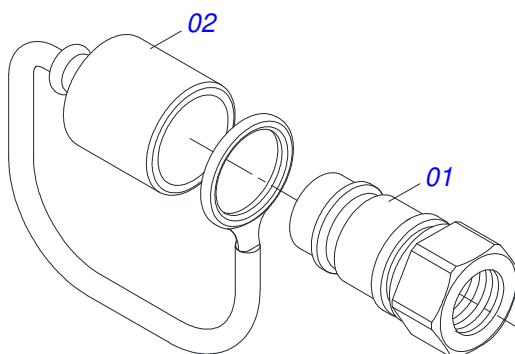


Item	Code	Description	See page	QT
01	0531019380	AXLE		01
02	0502011389	BOX		01
03	0501010186	WHEEL SCREW 5/8UNF X 2.1/8CR		06
04	0503010064	5/8 UNF CONIC NUT		06
05	0503010006	32210 ROLLER BEARING		01
06	0501010888	1.3/4" 2.5/16" CASTLE NUT		01
07	0502020593	COVER		01
08	0503010010	1/4" X 2.1/2" COTTERPIN		01
09	0503010295	SCREW 5/16 UNC X 5/8 CS G.2 ZN		01
10	0503010002	1800 GREASE FITTING		01
11	0503010005	32212 ROLLER BEARING		01
12	0503010009	RETAINER 00573-B		01

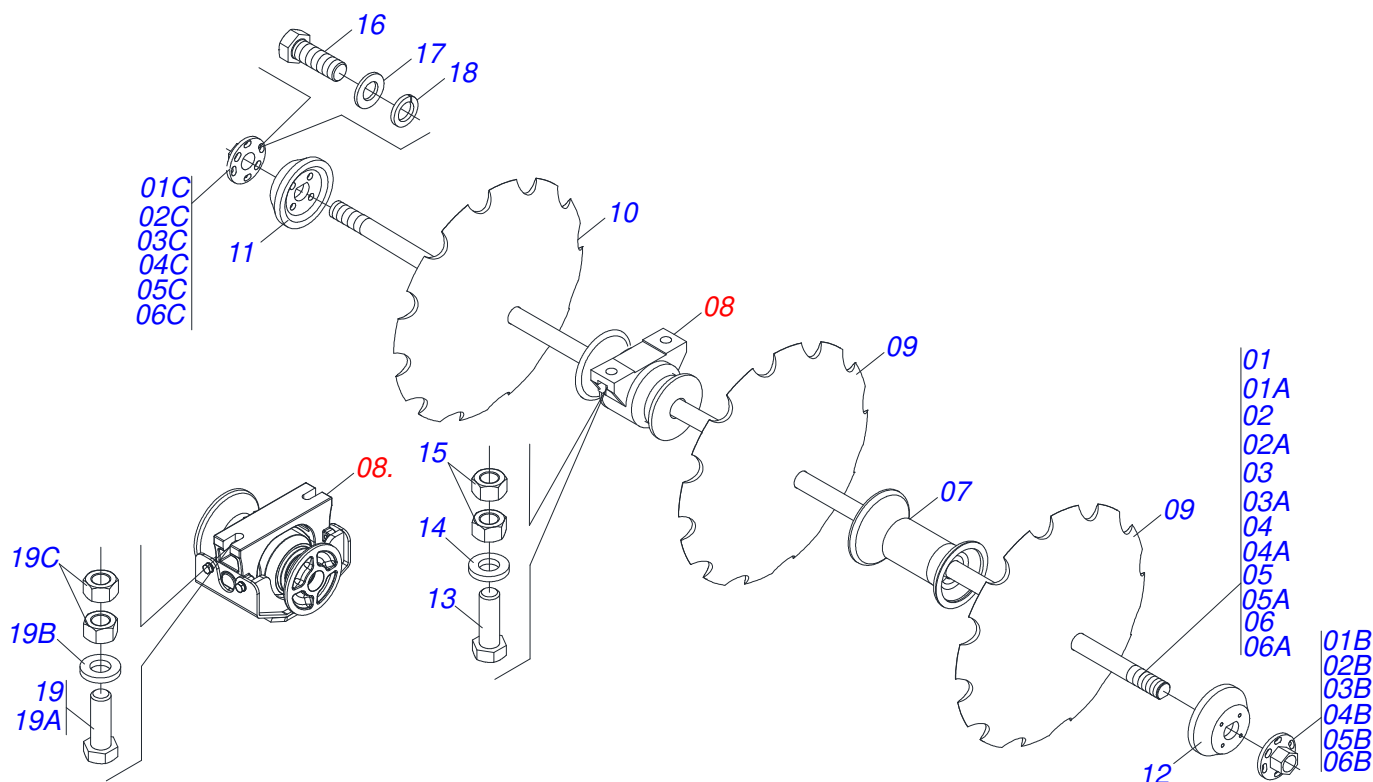


Item	Code	Description	See page	QT
01	0501110766	HUB CARRYING WHEELS WITH BOLT		01
02	0541014720	CR 7076205/1/1 AXLE		01
03	0503010006	32210 ROLLER BEARING		01
04	0503010005	32212 ROLLER BEARING		01
05	0501010086	FLAT WASHER		01
06	0503010067	3/16" X 2.1/2" COTTER PIN		01
07	0502011647	COVER		01
08	0503010691	1/4" GREASE FITTING		01
09	0503010009	RETAINER 00573-B		01
10	0503012723	502115 RENO RING		01
11	0503010298	1/4" X 1/2" BOLT		01
12	0503012457	UNF 1.1/4" CASTLE NUT		01



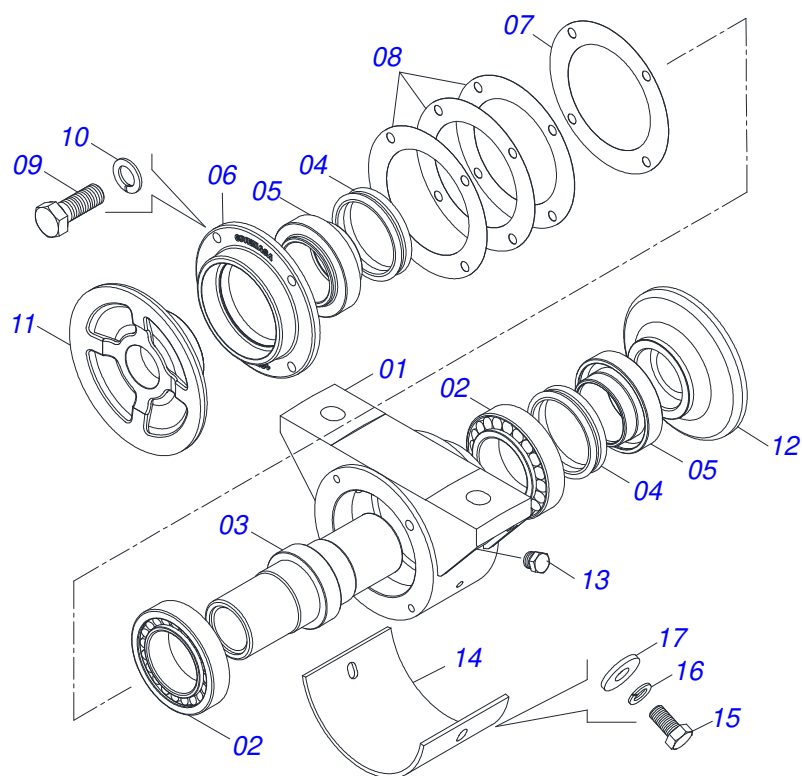


Item	Code	Description	See page	QT
01	0503011627	MALE QUICK COUPLER AGR 1/2 NPT		01
02	0503011882	MALE QUICK COUPLER CAP		01

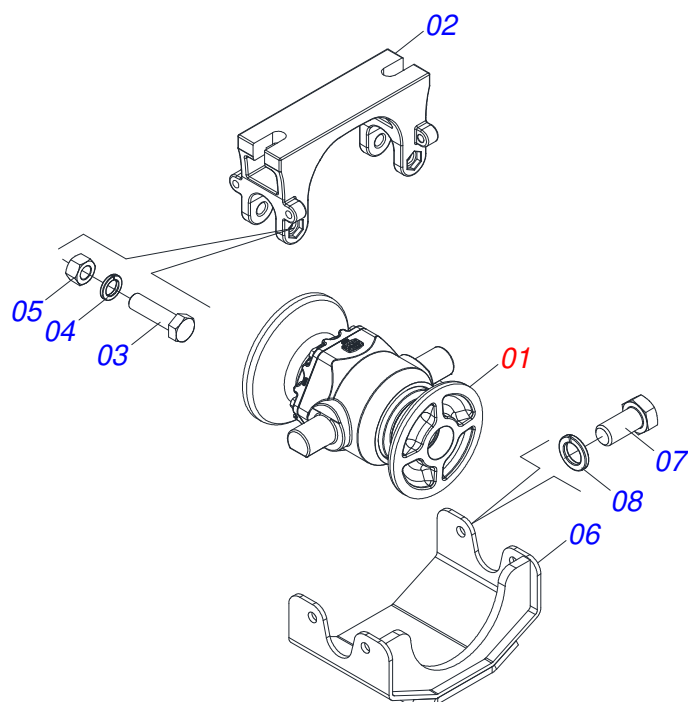


Item	Code	Description	See page	16	18	20	24	26	28	30
01	0511050238	AXLE DISC		02	00	00	00	00	00	02
01A	0521013844	AXLE DISC		02	00	00	00	00	00	02
01B	0502011574	RIGHT NUT		02	04	04	04	04	04	04
01C	0502011575	LEFT NUT		02	04	04	04	04	04	04
02	0511050335	AXLE DISC		00	02	00	00	00	00	01
02A	0521013820	AXLE DISC		00	01	00	00	00	00	01
02B	0502011574	RIGHT NUT		00	01	00	00	00	00	01
02C	0502011575	LEFT NUT		00	01	00	00	00	00	01
03	0511050285	AXLE DISC		00	02	04	00	00	00	00
03A	0521013684	AXLE DISC		00	01	01	00	00	00	00
03B	0502011574	RIGHT NUT		00	01	01	00	00	00	00
03C	0502011575	LEFT NUT		00	01	01	00	00	00	00
04	0511050216	1.3/4UNC X 1567 AXLE ASSY		00	00	00	02	00	00	00
04A	0521013681	AXLE		00	00	00	01	00	00	00
04B	0502011574	RIGHT NUT		00	00	00	01	00	00	00
04C	0502011575	LEFT NUT		00	00	00	01	00	00	00
05	0511050175	1.3/4 UNC X 1837 AXLE DISC ASSY		00	00	00	00	04	02	00
05A	0521013682	AXLE		00	00	00	00	01	01	00
05B	0502011574	RIGHT NUT		00	00	00	00	01	01	00
05C	0502011575	LEFT NUT		00	00	00	00	01	01	00
06	0511050264	DISC AXLE WITH NUT		00	00	00	00	02	00	00
06A	0521013682	AXLE		00	00	00	00	01	00	00
06B	0502011574	RIGHT NUT		00	00	00	00	01	00	00
06C	0502011575	LEFT NUT		00	00	00	00	01	00	00
07	0502011576	3390172 SPACER		08	06	08	14	14	16	16
08	0511040113	AGRICULTURAL BEARING	12	06	08	08	08	08	08	10
08.	0531041583	AGRICULTURAL BEARING	13	00	00	00	00	00	08	00
09	0602037001	28" X 7,5MM NOTCHED DISC BLADE		16	18	20	24	26	28	30
10	0602040041	30X7,5 C105AF04FR1.13/16 10R T/CV NOTCHED DISC		16	18	20	24	26	28	30
11	0502011572	BEARING INNER FLANGE		02	04	04	04	04	04	04
12	0502011573	OUTER FLANGE		02	04	04	04	04	04	04

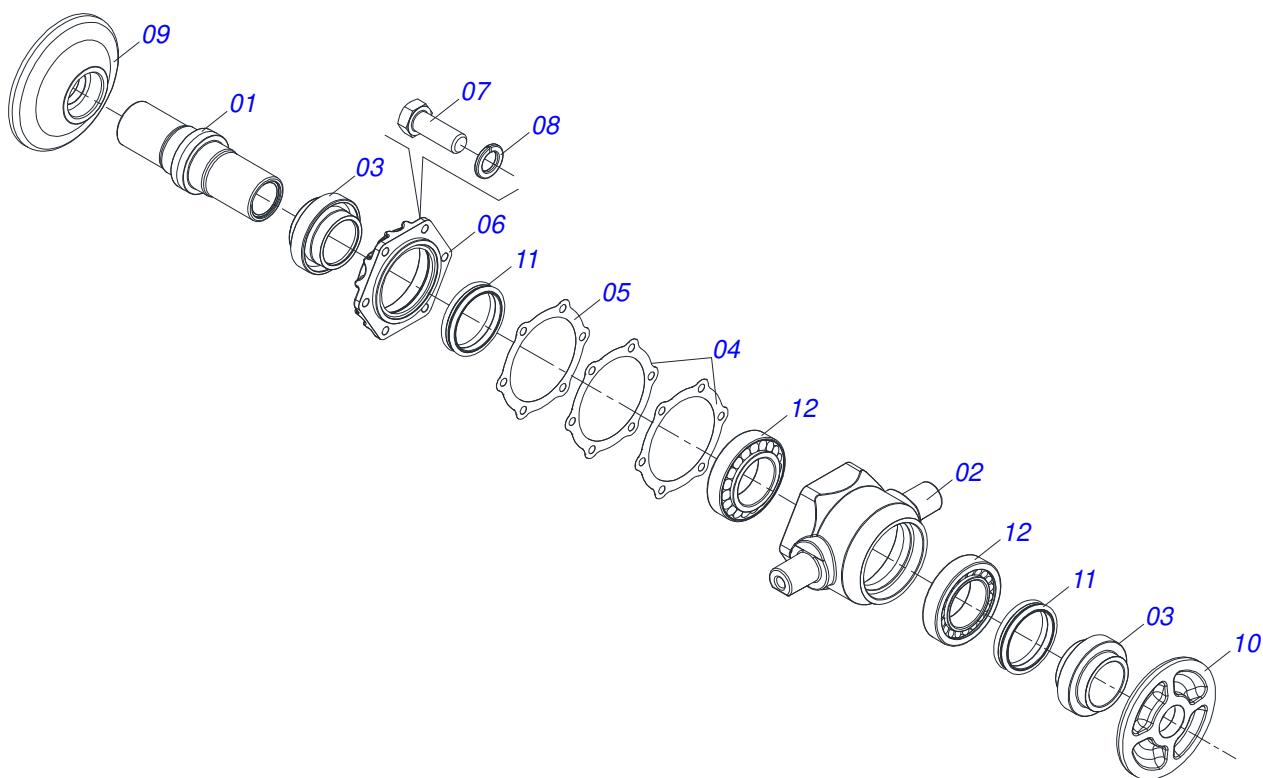
Item	Code	Description	See page	16	18	20	24	26	28	30
13	0503010901	3/4UNC 3.1/2 BOLT		12	16	16	16	16	16	20
14	0521013710	WASHER SEMIMAN		12	16	16	16	16	16	20
15	0503012183	SNC 3/4" ZIN 1K03097 NUT		24	32	32	32	32	32	40
16	0503010834	1/2 X 1 BOLT		08	16	16	16	16	16	16
17	0501010937	13.5 X 28 X 3 FLAT WASHER		08	16	16	16	16	16	16
18	0503010019	1/2" SPRING WASHER		08	16	16	16	16	16	16
19	0521047424	SCREW ASSY		00	00	00	00	00	16	00
19A	0501010500	3/4"X3"BOLT		00	00	00	00	00	01	00
19B	0501010322	FLAT WASHER		00	00	00	00	00	01	00
19C	0503012183	SNC 3/4" ZIN 1K03097 NUT		00	00	00	00	00	02	00



Item	Code	Description	See page	QT
01	0502011965	BEARIN BODY	01	
02	0503010104	3984/3920 ROLLER BEARING	02	
03	0502010824	AXLE CM/DM	01	
04	0503030027	DUO-CONE SEAL	02	
05	0502010823	SEAL RETAINER	02	
06	0502011966	BEARING COVER	01	
07	0503031685	JOINT BEARIN	01	
08	0503031686	JOINT BEARIN	03	
09	0503010237	3/8" X 1" BOLT	04	
10	0503011443	3/8" SPRING WASHER	04	
11	0502040141	OUTER FLANGE	01	
12	0502040142	INNER FLANGE	01	
13	0503010856	OIL PLUG	01	
14	0521013856	PLATE PROTECTION	01	
15	0503011334	BOLT 3/8 UNC X 3/4 CS G.5 ZN	02	
16	0503010025	3/8" SPRING WASHER	02	
17	0501010984	FLAT WASHER	02	



Item	Code	Description	See page	QT
01	0531052860	AGRICULTURAL BEARING	14	01
02	0502013013	SUPPORT CENTER		01
03	0503010762	SCREW 5/8 UNC X 3.1/2 CS G.5 ZN		02
04	0503010013	5/8" NUT		02
05	0503010027	5/8" SPRING WASHER		02
06	0521067341	BEARING SWING COVER WITH ENHANCED		01
07	0503010834	1/2 X 1 BOLT		04
08	0503010019	1/2" SPRING WASHER		04



Item	Code	Description	See page	QT
01	0502010824	AXLE CM/DM		01
02	0502012343	AGRICULTURAL HOUSING BEARING		01
03	0502010823	SEAL RETAINER		02
04	0503030030	5.6" X 4.4" X 0.01" GASKET		02
05	0503030685	5.5" X 4.4" X 0.003" GASKET		01
06	0502020161	WEAR PLATE BEARING		01
07	0503010237	3/8" X 1" BOLT		06
08	0503011443	3/8" SPRING WASHER		06
09	0502040141	OUTER FLANGE		01
10	0502040142	INNER FLANGE		01
11	0503030027	DUO-CONE SEAL		02
12	0503010104	3984/3920 ROLLER BEARING		02
13	3402301275	TATU OIL		00





# ***civemasa***

**Technical Publications | Elaboration and Revision**  
MARINA PEREZ NIZA

[www.civemasa.com.br](http://www.civemasa.com.br)

