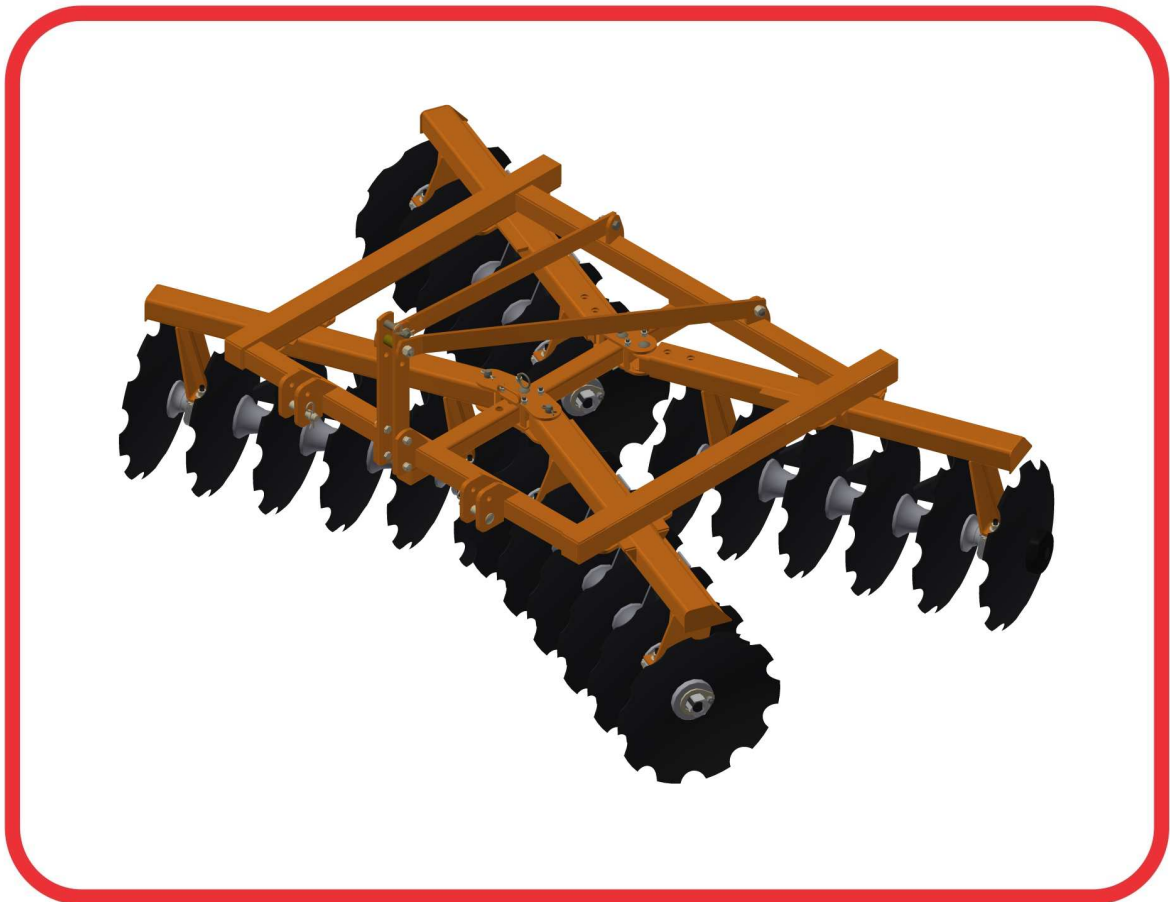


# ***PARTS CATALOGUE***

## **DISK HARROWS**

### **GHC2 32D**

**Code: 0501092014**



**Series: S-0605**

**Review: SETEMBRO/2017**

**ORIGINAL PARTS  
CIVEMASA**

***civemasa***

# PRODUCTS

**Code**

0120690039

**Description**

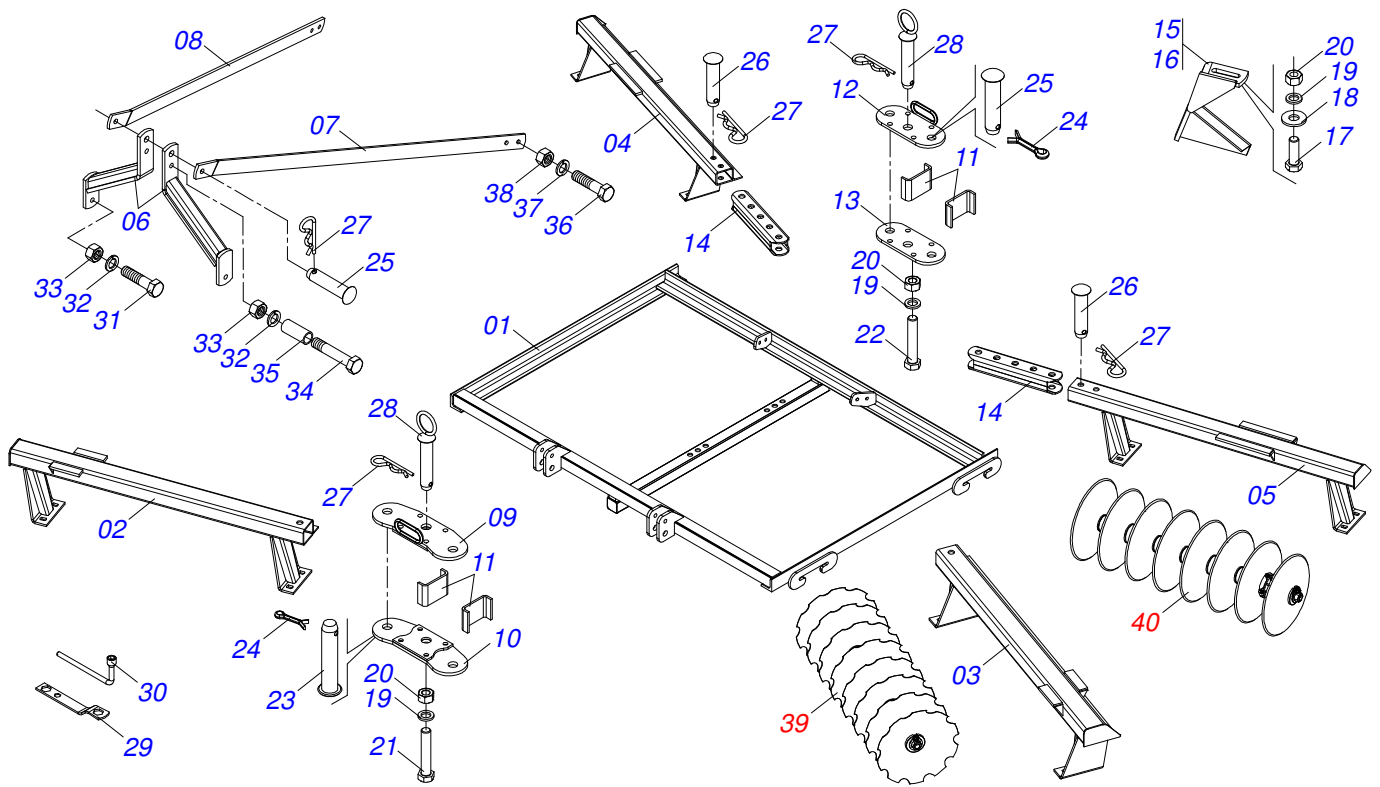
GHC2 32 X 20 X 3,50 MA L/R S-0605

**ATTENTION: *IMPORTANT***

*CIVEMASA RESERVES THE RIGHT AT ANY TIME TO MAKE IMPROVEMENTS IN THE DESIGN, MATERIAL OR SPECIFICATIONS OF MACHINERY, EQUIPMENT OR PARTS WITHOUT THEREBY BECOMING LIABLE TO MAKE SIMILAR CHANGES IN MACHINERY, EQUIPMENT OR PARTS PREVIOUSLY SOLD.*

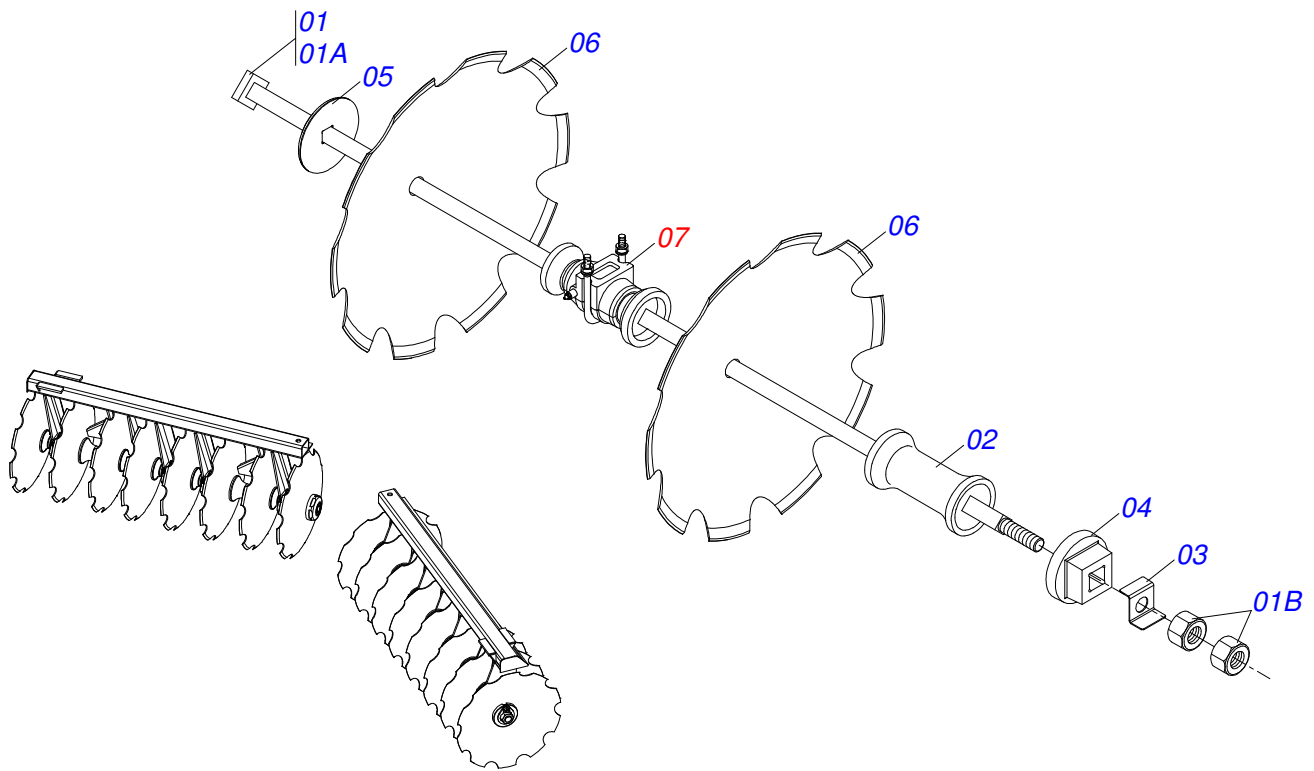
# INDEX

0909093562	GHC2 32D	.....	1
0909093560	SECTION FRONT SIDE RIGHT AND LEFT	.....	2
0909093561	SECTION REAR SIDE RIGHT AND LEFT	.....	3
0501040132	FRICTION BEARING ASSY	.....	4

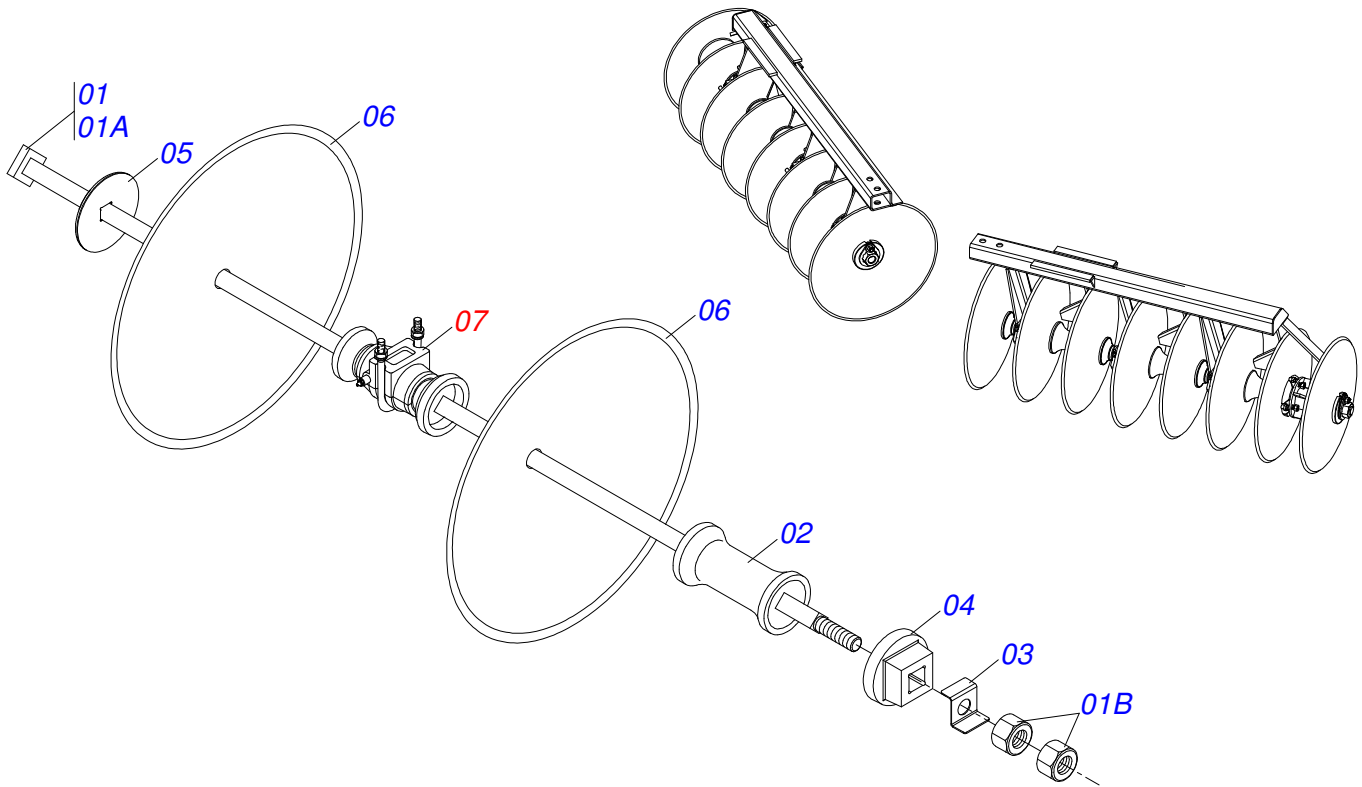


Item	Code	Description	QT
01	0521062902	FRAME	01
02	0521066889	FRONT FRAME RIGHT	01
03	0521066892	LEFT FRONT FRAME	01
04	0521066890	RIGHT REAR FRAME	01
05	0521066891	LEFT REAR FRAME	01
06	0501066378	SEMI CAB	02
07	0561017325	RIGHT HAND	01
08	0561017326	LEFT FRENCH HAND	01
09	0511067096	FRONT TOP REGULATOR	01
10	0511067095	FRONT LOWER REGULATOR	01
11	0541018541	REGULATOR GUIDES	04
12	0511066991	REAR ADJUSTMENT BASE	01
13	0541018540	REGULATORY BODY REAR BASE	01
14	0511066990	ADJUSTMENT TUBE	02
15	0511066927	LH FRONT/RH REAR SCRAPER	10
16	0511066928	RH FRONT/LH REAR SCRAPER	10
17	0503010920	1/2" X 1.1/2" BOLT	20
18	0511017302	FLAT WASHER	20
19	0503010019	1/2" SPRING WASHER	28
20	0503010060	1/2" NUT	28
21	0503010384	1/2" X 5" BOLT	04
22	0503010706	1/2" X 4.1/2" BOLT	04
23	0521010581	0.9" X 4.9" COUPLING SHAFT	02
24	0503010571	1/4" X 1.1/2 COTTERPIN	04
25	0521010578	COUPLING SHAFT	03
26	0521012532	0.9" X 3.9" COUPLING SHAFT	04
27	0503031035	HAIR PIN	09
28	0511067081	LOCK PIN	01
29	0511018451	5/8" X 3/4" X 1" UNIVERSAL	01
30	0501068273	5/8" WRENCH	01
31	0501018059	3/4" X 2-1/4" BOLT	02
32	0503010023	SPRING WASHER	03
33	0503010014	3/4" NUT	03

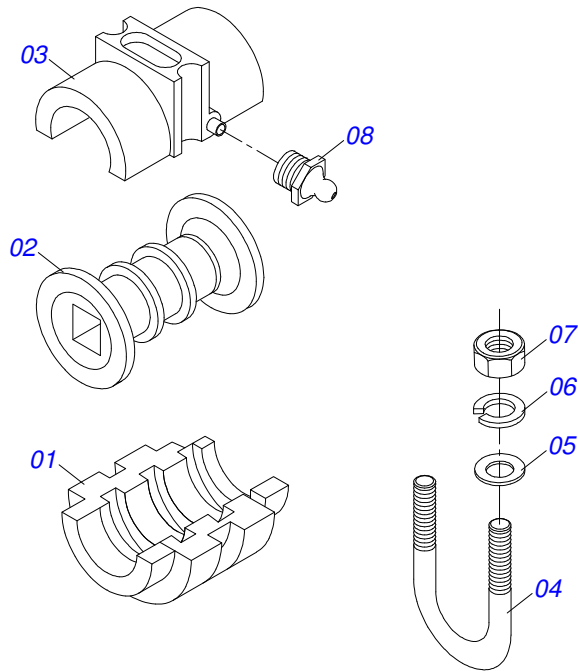
Item	Code	Description	QT
34	0503011198	C3/4" X 6" BOLT	01
35	0521010490	SLEEVE SPACER	01
36	0503010232	5/8" X 1.3/4" BOLT	04
37	0503010027	SPRING WASHER	04
38	0503010013	5/8" NUT	04
39	0909093560	SECTION FRONT SIDE RIGHT AND LEFT	01
40	0909093561	SECTION REAR SIDE RIGHT AND LEFT	01



Item	Code	Description	QT
01	0501044117	1" X 59" SQUARE AXLE WITH NUTS	02
01A	0511011997	1" X 59" SQUARE SHAFT	02
01B	0501010059	1.5/8 NUT	04
02	0502010933	192,5 SPACER	10
03	0501010450	NUT LOCK	02
04	0502010076	INNER AXLE WASHER FQ	02
05	0502010075	EXTERNAL AXLE WASHER	02
06	0602027230	DR20X3,5 C57AF02FC1.1/16 10RE JUMIL	16
07	0501040132	FRICTION BEARING ASSY	04



Item	Code	Description	QT
01	0501044117	1" X 59" SQUARE AXLE WITH NUTS	02
01A	0511011997	1" X 59" SQUARE SHAFT	02
01B	0501010059	1.5/8 NUT	04
02	0502010933	192,5 SPACER	10
03	0501010450	NUT LOCK	02
04	0502010076	INNER AXLE WASHER FQ	02
05	0502010075	EXTERNAL AXLE WASHER	02
06	0601027184	DL20X3,5 C57AF02FC1.1/16 9901022 JU	16
07	0501040132	FRICTION BEARING ASSY	04



Item	Code	Description	QT
01	0502030006	LOWER COVER HOUSING	01
02	0502030011	REEL	01
03	0502030004	UPPER COVER HOUSING	01
04	0521012326	5/8 UNC X 138 X 117 FASTENER	01
05	0501012140	FLAT WASHER	02
06	0503010027	SPRING WASHER	02
07	0503010013	5/8" NUT	02
08	0503010002	1800 GREASE FITTING	01







email: [civemasa@civemasa.com.br](mailto:civemasa@civemasa.com.br)

[www.civemasa.com.br](http://www.civemasa.com.br)

Phone: +55 16.3382.8222

Fax: +55 16.3382.8355

## MARCHESAN IMPLEMENTOS E MÁQUINAS AGRÍCOLAS "TATU" S.A.

Av. Marchesan, 1979 - Post Office box, 131 - Cep 15994-900 - Matão - Sp - Brasil

CNPJ 52.311.289/0001-63 | Inst. Est.441.000.151.114

**Technical Publications: Elaboration**

ALESSANDRA PATRICIA KAWAHARA CARRILI

**Technical Publications: Revision**

ALESSANDRA PATRICIA KAWAHARA CARRILI

Contact Catálogo:

E-mail = [jgaspari@marchesan.com.br](mailto:jgaspari@marchesan.com.br)

ORIGINAIS PARTS  
CIVEMASA