

# ***PARTS CATALOGUE***

## **TINE CULTIVATORS**

**CATP 02/03 L.**

**Code: 0501091690**



**Series: S-0207**

**Rev.: 00**

**Date Rev.: JUNHO/2016**

**ORIGINAL PARTS  
CIVEMASA**

***civemasa***

# PRODUCTS

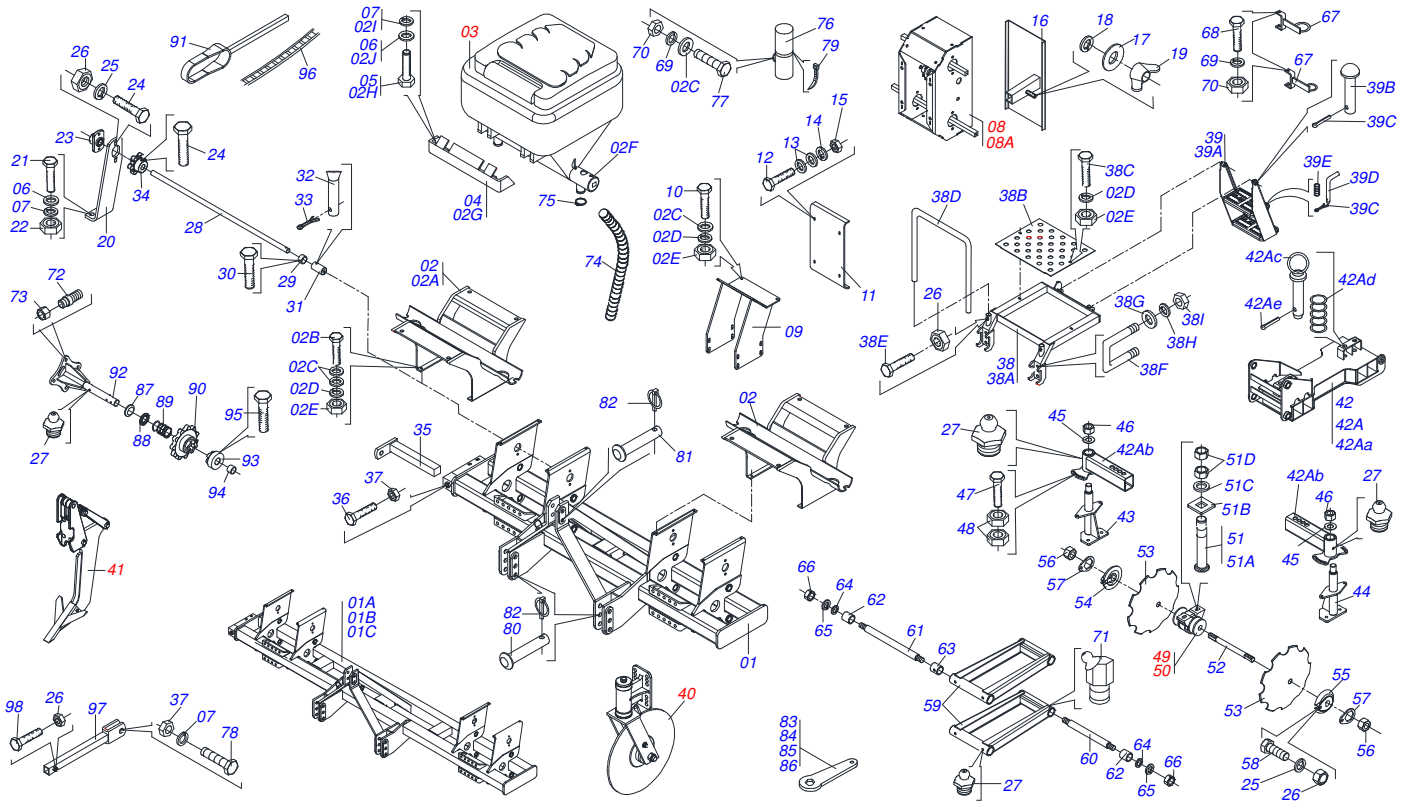
Code	Description
0120840139	CATP 2H/MHL DC BSB 280B KS 61591319
0120840125	CATP 2L 2H 16D KS BH 61591209
0120840128	CATP 2L 2H 16D KS BHB 61591237
0120840152	CATP 2L 2H 16D KS BHB PT 61591429
0120840117C	CATP 2L 2H DC 16D 61591127 EXP S-0207
0120840117	CATP 2L 2H DC 16D 61591127 S-0207
0120840129	CATP 2L 2H DC 16D KS 61591255
0120840126	CATP 2L 2H DC 16D KS BH 61591219
0120840122	CATP 2L 2H DC 16D KS PT S-0207
0120840122C	CATP 2L 2H DC 16D KS PT EXP S-0207
0120840123	CATP 2L 2H DC 16D PT 61591172
0120840146	CATP 2L 2H DC PT KS BH KCC 61591374
0120840154	CATP 2L 2H/BA G16D RA S/DC/SILO/HID
0120840120	CATP 2L 2H/MHL DC 16E 280 61591145
0120840130	CATP 2L 2H/MHL DC 16E 280B 61591246
0120840145	CATP 3L 3H DC ADB 280L 24D 61591365
0120840148	CATP 3L 3H DC ADB 280L 24D 61591392
0120840138	CATP 3L 3H/MHL DC 24D 280B 61591300
0120840141	CATP-AR 2L 2H DC 16 BH KS BH 125
0120840104	CATP-AR 2L 2H DC 16 KS BHB 61591017
0120840132	CATP-AR 2L 2H DC 16 KS JD7500/7505
0120840143	CATP-AR 2L 2H DC 16 KS MF 61591347
0120840124	CATP-AR 2L 2H DC 16 KS VTR 880A1280
0120840142	CATP-AR 2L 2H DC 16 MF 275 61591338
0120840127	CATP-AR 2L DC KS BHB VALMET78A148-4

## ATTENTION: **IMPORTANT**

*CIVEMASA RESERVES THE RIGHT AT ANY TIME TO MAKE IMPROVEMENTS IN THE DESIGN, MATERIAL OR SPECIFICATIONS OF MACHINERY, EQUIPMENT OR PARTS WITHOUT THEREBY BECOMING LIABLE TO MAKE SIMILAR CHANGES IN MACHINERY, EQUIPMENT OR PARTS PREVIOUSLY SOLD.*

# INDEX

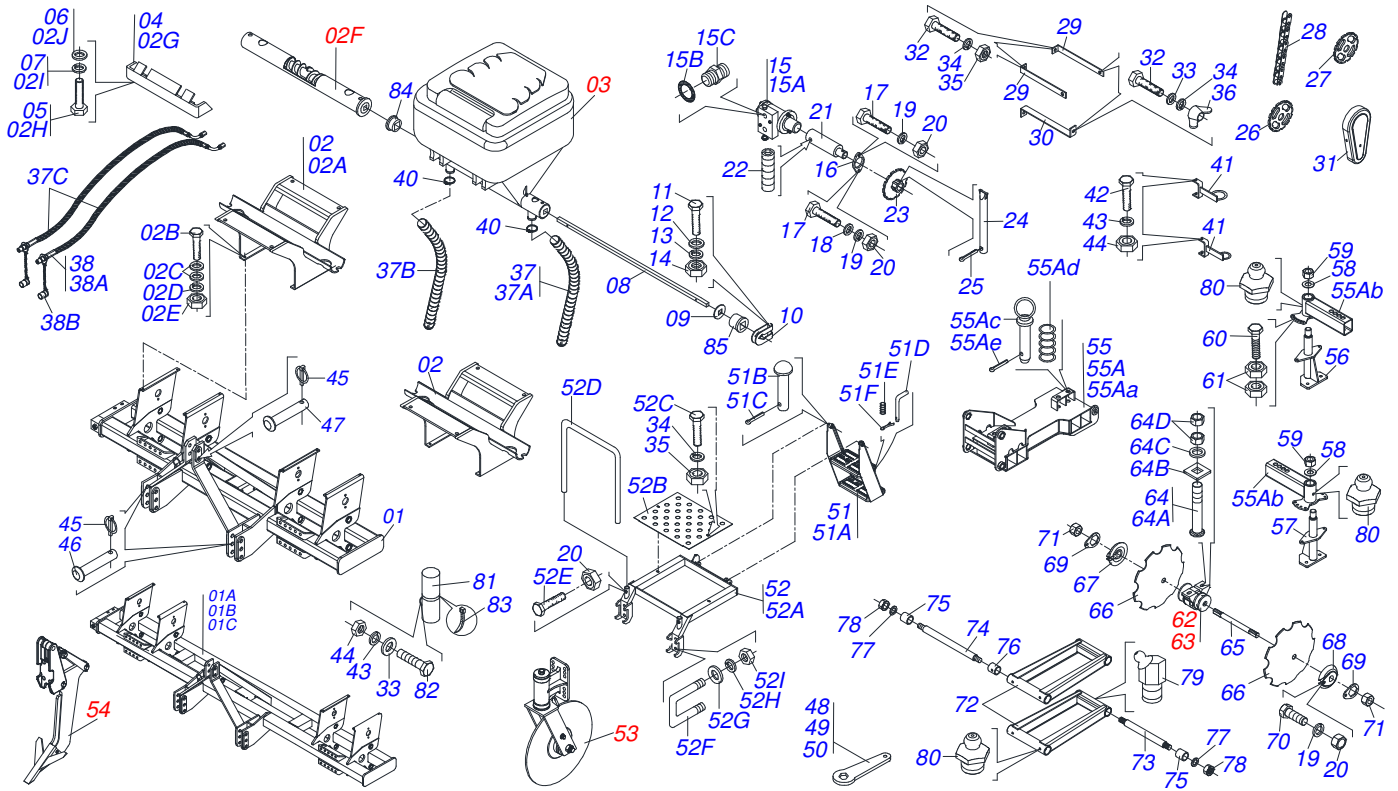
0909091683	CATP 02/03L. T-MEC	.....	1
0909091684	CATP 02/03 L ESP.	.....	2
0909092785	GEAR BOX	.....	3
0909092786	FERTILIZER BEAM ASSY	.....	4
0511044355	24" BLADE DISC ASSY	.....	5
0501054884	SHANKS SYSTEM ASSY SACM3	.....	6
0909090433	OIL BATH BEARING	.....	7
0501054945	REAR LEVELING	.....	8



Item	Code	Description	02-03 L
01	0511067104	FRAME	01 00
01A	0511067375	FRAME	00 01
01B	0511069539	FRAME	00 01
01C	0511067363	FRAME	00 01
02	0511045972	SILO SUPPORT ASSY	02 03
02A	0511068657	SILO SUPPORT	02 03
02B	0503010849	3/8" X 1-1/2" BOLT	04 08
02C	0501010984	FLAT WASHER	08 16
02D	0503010025	3/8 SPRING WASHER	04 08
02E	0503010026	3/8" NUT	04 08
02F	0501057636	ASSY PARTS BEAN CATP/SATP 2L	01 02
02G	0511068656	FERTILIZER BEAM LOCK	02 04
02H	0503010233	5/8" X 2-1/2" BOLT	04 08
02I	0503010027	SPRING WASHER	04 08
02J	0501012140	FLAT WASHER	04 08
03	0503061670	COVER ORANGE BOX FERTIL YELLOW	02 03
04	0511068656	FERTILIZER BEAM LOCK	02 03
05	0503010233	5/8" X 2-1/2" BOLT	04 08
06	0501012140	FLAT WASHER	08 16
07	0503010027	SPRING WASHER	07 14
08	0511045952	GEAR BOX	01 01
08A	0501055624	GEAR BOX	01 01
09	0511067107	SPEED SUPPORT VARIADOR	01 01
10	0503010237	3/8" X 1" BOLT	04 04
11	0541019052	SPEED COVER VARIADOR	01 01
12	0503010282	1/4" X 3/4" BOLT	04 04
13	0511017303	FLAT WASHER	08 08
14	0503010143	SPRING WASHER	04 04
15	0503010144	1/4" NUT	04 04
16	0511066626	SPEED COVER BOX	01 01
17	0521013303	WASHER	01 01

Item	Code	Description	02-03 L
18	0503010179	SPRING WASHER	01 01
19	0503010499	5/16" UNC BUTTERFLY NUT	01 01
20	0511068170	SUPPORT BEARING	01 01
21	0501010100	5/8 UNC X 2 C S G.5 BOLT	02 02
22	0503010013	5/8" NUT	02 02
23	0501110014	AGRICULTURAL BEARING	01 01
24	0501010077	1/2" X 2" BOLT	04 04
25	0503010019	1/2" SPRING WASHER	10 10
26	0503010060	1/2" NUT	13 13
27	0503010002	1800 GREASE FITTING	09 09
28	0541018896	DRIVER AXLE	01 01
29	0501010783	DRIVING AXLE LUCK	01 01
30	0503013662	1/2" X 1" BOLT	01 01
31	0511067108	SLEEVE AXLE DRIVING	01 01
32	0521010530	COUPLING SHAFT	01 01
33	0503010140	1/8" X 3/4" COTTERPIN	01 01
34	0502011311	6Z GEAR	01 01
35	0511068171	EAR DRIVING	01 01
36	0503010232	5/8" X 1.3/4" BOLT	01 01
37	0503010013	5/8" NUT	02 01
38	0501057649	PLATFORM ASSY	01 01
38A	0511068710	PLATFORM SACM/SA-T S-0207	01 02
38B	0541018908	PLATFORM BODY	01 02
38C	0503011268	3/8" X 2-1/2" BOLT	02 04
38D	0551015666	HANDRAIL BODY	01 02
38E	0503014007	1/2" X 1-1/4" BOLT	02 04
38F	0521010660	3/4" X 5.9" X 5.1" FASTENER	02 04
38G	0501010322	FLAT WASHER	04 08
38H	0503010023	SPRING WASHER	04 08
38I	0503010014	3/4" NUT	04 08
39	0501057647	LADDER	01 02
39A	0501069281	RIGHT LADDER	01 02
39B	0521010542	COUPLING SHAFT	02 04
39C	0503010257	1/8" X 1" COTTERPIN	03 06
39D	0521011249	LADDER LOCK PIN	01 02
39E	0503030190	0.5" X 1.6" X 0.05" SPRING	01 02
40	0511044355	24" BLADE DISC ASSY	02 03
41	0501054884	SHANKS SYSTEM ASSY SACM3	02 03
42	0511045874	GRID ASSY	02 03
42A	0501055628	FRAME HORROW TANDEM	01 02
43	0511063098	DISC SUPPORT UPPER	02 03
44	0511063099	DISC REG SUPPORT LOWER	02 03
45	0521012120	WASHER	04 08
46	0501010110	1.1/2" NUT	04 08
47	0503011195	7/16" X 1.3/4" BOLT	08 16
48	0503010244	7/16" NUT	16 32
49	0501049008	7.2" X 1-1/4" OIL BATH BEARING	02 03
50	0501049009	7.2" X 1-1/4" OIL BATH BEARING	02 03
51	0501048963	5/8" X 2-1/2" BOLT ASSY	08 16
52	0521012160	1.1/4" X 290 AXLE	04 08
53	0602025011	0.7" X 0.2" NOTCHED DISC BLADE	08 16
54	0502010834	1-1/4" INNER AXLE WASHER	04 08
55	0502010835	1-1/4" EXTERNAL AXLE WASHER	04 08
56	0501010087	1.1/4" NUT	08 16
57	0501010455	1.1/4" NUT LOCK	08 16
58	0501010161	1/2" X 1.1/4" BOLT	08 16
59	0511064991	ROCKING DRIVER	02 04
60	0521012121	AXLE SMALEER PIVOT	02 04
61	0541010320	DRIVER ROCKING AXLE LARGER PIVOT	02 04

Item	Code	Description	02-03 L
62	0521012122	DRIVER ROCKING SLEEVE SUPPORT	08 16
63	0541010319	SLEEVE	04 08
64	0521012087	FLAT WASHER	08 16
65	0503010012	1" SPRING WASHER	08 16
66	0503010340	1" NUT	08 16
67	0511067339	HOSE SUPPORT	02 02
68	0503013096	5/16" X 4" BOLT	02 02
69	0503010179	SPRING WASHER	03 06
70	0503010337	5/16" NUT	03 06
71	0503010003	1845 GREASE FITTING	04 08
72	0501010762	STUD	04 08
73	0501016992	3/4" CONIC NUT	04 08
74	0551013640	2.1/2" X 1100 HOSE ASSY	04 08
75	0503011266	CLAMP 2.1/4" A 3" 57-76	04 08
76	0503060100	HAND BOOK COMPARTMENT	01 01
77	0503010371	5/16" X 1" BOLT	01 01
78	0503010899	5/8" X 2-1/4" BOLT	01 01
79	0503010267	NYLON CLAMP	01 01
80	0521012124	COUPLING SHAFT	02 02
81	0521012533	COUPLING SHAFT	01 01
82	0503030085	LOCK PIN	03 03
83	0521012126	1.3" CABLE FLAT WRENCH HEX	01 01
84	0531014773	2.3 CABLE FLAT WRENCH HEX	01 01
85	0521012199	1.6" GANG BOLT WRENCH	01 01
86	0521012200	2" CABLE FLAT WRENCH	01 01
87	0511016819	CONICAL SPRING WASHER	04 04
88	0501010765	SPINDLE GUIDE	01 01
89	0503030086	COMPRESSION SPRING	01 01
90	0502011321	11Z GEAR WITH RIGHT DRAGGER	01 01
91	0511068861	COUPLING/UNCOUPLING ARM	01 01
92	0501061186	MOTOR SUPPORT	01 01
93	0502011379	RH FOLLOWER	01 01
94	0501014453	LOCK BUSHING	01 01
95	0503010734	1/2" X 2-1/2" BOLT	03 03
96	0503010253	57 CHAIN X 73 LINK	01 01
97	0511068860	ROD DRIVING	01 01
98	0501010161	1/2" X 1.1/4" BOLT	01 01

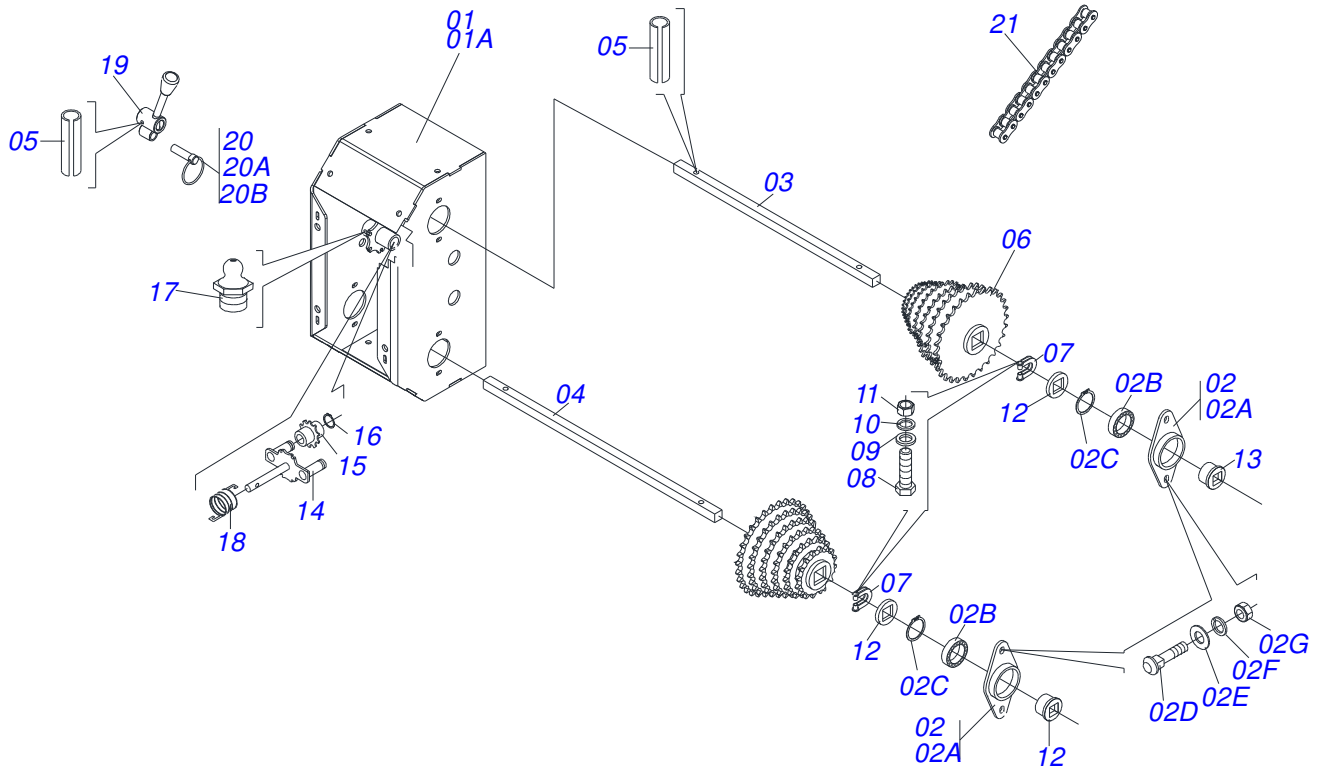


Item	Code	Description	02-03 L
01	0511067104	FRAME	01 00
01A	0511067375	FRAME	00 01
01B	0511069539	FRAME	00 01
01C	0511067363	FRAME	00 01
02	0511045972	SILO SUPPORT ASSY	02 03
02A	0511068657	SILO SUPPORT	01 02
02B	0503010849	3/8" X 1-1/2" BOLT	04 08
02C	0501010984	FLAT WASHER	08 16
02D	0503010025	3/8 SPRING WASHER	04 08
02E	0503010026	3/8" NUT	04 08
02F	0501057636	ASSY PARTS BEAN CATP/SATP 2L	01 02
02G	0511068656	FERTILIZER BEAM LOCK	02 04
02H	0503010233	5/8" X 2-1/2" BOLT	04 08
02I	0503010027	SPRING WASHER	04 08
02J	0501012140	FLAT WASHER	04 08
03	0503061670	COVER ORANGE BOX FERTIL YELLOW	02 04
04	0511068656	FERTILIZER BEAM LOCK	02 04
05	0503010233	5/8" X 2-1/2" BOLT	04 08
06	0501012140	FLAT WASHER	04 08
07	0503010027	SPRING WASHER	04 08
08	0501010780	AXLE Q 3/4 X 840 SAC/M	01 02
09	0521018630	1.4" X SQUARE 0.8" WASHER	02 04
10	0521010691	AXLE FASTENER	02 04
11	0503010373	1/4" X 2" BOLT	02 04
12	0511017303	FLAT WASHER	02 04
13	0503010143	SPRING WASHER	02 04
14	0503010144	1/4" NUT	02 04
15	0501053421	VALVE MOTOR HYDRAULIC ASSY	01 01
15A	0503012829	VALVE HYDRAULIC MOTOR ASSY	01 01
15B	0503010045	2-116 N 3006-9B O'RING	02 02
15C	0501010590	7/8" REDUCTION NIPPLE	02 02

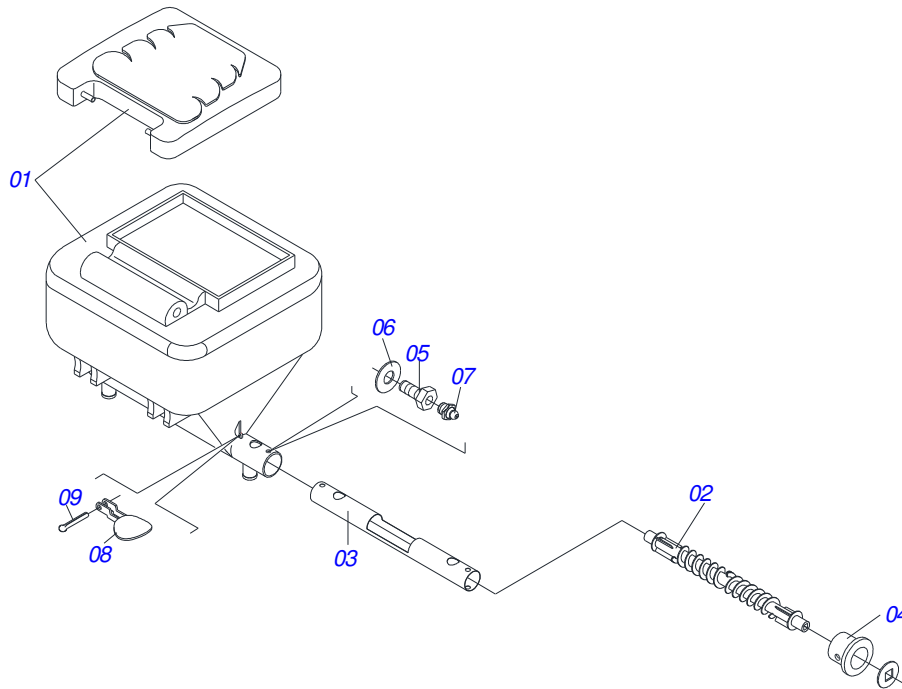
Item	Code	Description	02-03 L
16	0541019115	HYDRAULIC MOTOR FLANGE	01 01
17	0503011172	1/2" X 2-1/2" BOLT	02 02
18	0511017302	FLAT WASHER	01 01
19	0503010019	1/2" SPRING WASHER	10 10
20	0503010060	1/2" NUT	12 12
21	0511067266	HIDRAULIC MOTOR AXLE	01 01
22	0503011136	1/2" X 1/2" CSI BOLT	01 01
23	0502010411	10Z GEAR	01 01
24	0521010530	COUPLING SHAFT	01 01
25	0503010140	1/8" X 3/4" COTTERPIN	01 01
26	0502011318	10Z GEAR	01 01
27	0502011349	18Z P 1.2" SH 3/4" GEAR	01 01
28	0503014266	2050 CHAIN X 31 LINK + MENDING+REDUCTION	01 01
29	0551015602	CHAIN CAP UPPER SUPPORT	02 02
30	0551015603	CHAIN CAP LOWER SUPPORT	01 01
31	0503032927	CHAIN CAP BLACK	01 01
32	0503011087	3/8" X 1" BOLT	05 05
33	0501010984	FLAT WASHER	04 04
34	0503010025	3/8 SPRING WASHER	07 07
35	0503010026	3/8" NUT	04 04
36	0503010209	3/8" UNC BUTTERFLY NUT	03 03
37	0501057902	HOSE KIT	01 01
37A	0551013640	2.1/2" X 1100 HOSE ASSY	04 04
37B	0551013641	2.1/2" X 1430 HOSE ASSY	04 04
37C	0501080630	1/2" X 78" TC-TM HOSE ASSY	02 02
38	0501053834	MALE QUICK COUPLING AGRICULTURAL WITH COVER - 1/2 NPT	02 02
38A	0503011627	QUICK CONNECTION (MALE) AGR 1/2 NPT	01 01
38B	0503011882	QUICK CONNECTION COVER	01 01
40	0503011266	CLAMP 2.1/4" A 3" 57-76	04 04
41	0511067339	HOSE SUPPORT	04 04
42	0503013096	5/16" X 4" BOLT	04 04
43	0503010179	SPRING WASHER	05 05
44	0503010337	5/16" NUT	05 05
45	0503030085	LOCK PIN	03 03
46	0521012124	COUPLING SHAFT	02 02
47	0521012533	COUPLING SHAFT	01 01
48	0531014773	2.3 CABLE FLAT WRENCH HEX	01 01
49	0521012199	1.6" GANG BOLT WRENCH	01 01
50	0521012200	2" CABLE FLAT WRENCH	01 01
51	0501057647	LADDER	01 01
51A	0501069281	RIGHT LADDER	01 01
51B	0521010542	COUPLING SHAFT	02 02
51C	0503010257	1/8" X 1" COTTERPIN	02 02
51D	0521011249	LADDER LOCK PIN	01 01
51E	0503030190	0.5" X 1.6" X 0.05" SPRING	01 01
51F	0503030190	0.5" X 1.6" X 0.05" SPRING	01 01
52	0501057649	PLATFORM ASSY	01 01
52A	0511068710	PLATFORM SACM/SA-T S-0207	01 01
52B	0541018908	PLATFORM BODY	01 01
52C	0503011268	3/8" X 2-1/2" BOLT	02 02
52D	0551015666	HANDRAIL BODY	01 01
52E	0503014007	1/2" X 1-1/4" BOLT	02 02
52F	0521010660	3/4" X 5.9" X 5.1" FASTENER	02 02
52G	0501010322	FLAT WASHER	04 04
52H	0503010023	SPRING WASHER	04 04
52I	0503010014	3/4" NUT	04 04
53	0511044355	24" BLADE DISC ASSY	02 02
54	0501054884	SHANKS SYSTEM ASSY SACM3	02 02



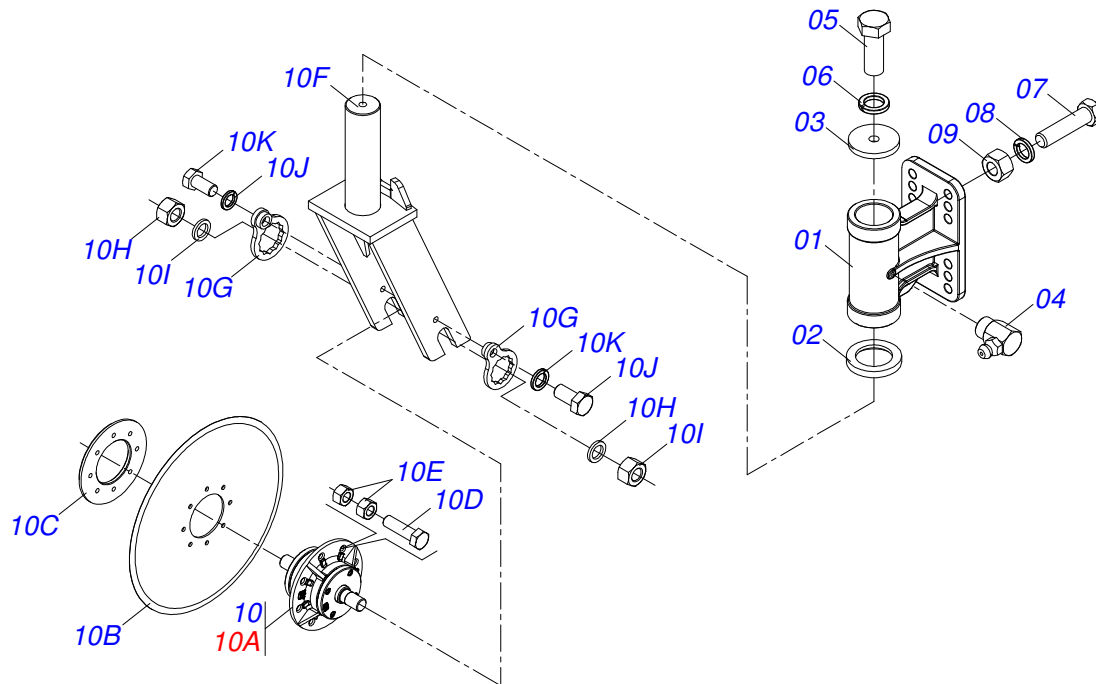
Item	Code	Description	02-03 L
55	0511045874	GRID ASSY	02 02
55A	0501055628	FRAME HORROW TANDEM	01 01
55Aa	0511067115	ROCKING HORROW	01 01
55Ab	0501069469	DISC REG DRIVER REG	04 04
55Ac	0501069472	DRIVER REG LOCK PIN	04 04
55Ad	0503030978	COMPRES SPRING	04 04
55Ae	0503010038	3/16 X 2 COTTERPIN	04 04
56	0511063098	DISC SUPPORT UPPER	02 02
57	0511063099	DISC REG SUPPORT LOWER	02 02
58	0521012120	WASHER	04 04
59	0501010110	1.1/2" NUT	04 04
60	0503011195	7/16" X 1.3/4" BOLT	08 08
61	0503010244	7/16" NUT	16 16
62	0501049008	7.2" X 1-1/4" OIL BATH BEARING	02 02
63	0501049009	7.2" X 1-1/4" OIL BATH BEARING	02 02
64	0501048963	5/8" X 2-1/2" BOLT ASSY	08 08
64A	0501014177	5/8" X 2-1/2" BOLT	08 08
64B	0501010947	5/8 NUT LOCK	08 08
64C	0501012140	FLAT WASHER	08 08
64D	0503010013	5/8" NUT	16 16
65	0521012160	1.1/4" X 290 AXLE	04 04
66	0602025011	0.7" X 0.2" NOTCHED DISC BLADE	08 08
67	0502010834	1-1/4" INNER AXLE WASHER	04 04
68	0502010835	1-1/4" EXTERNAL AXLE WASHER	04 04
69	0501010455	1.1/4" NUT LOCK	08 08
70	0501010161	1/2" X 1.1/4" BOLT	08 08
71	0501010087	1.1/4" NUT	16 16
72	0511064991	ROCKING DRIVER	02 02
73	0521012121	AXLE SMALEER PIVOT	02 02
74	0541010320	DRIVER ROCKING AXLE LARGER PIVOT	02 02
75	0521012122	DRIVER ROCKING SLEEVE SUPPORT	08 08
76	0541010319	SLEEVE	04 04
77	0521012087	FLAT WASHER	08 08
78	0503010063	1" SELF-ALIGNING NUT	08 08
79	0503010003	1845 GREASE FITTING	04 04
80	0503010002	1800 GREASE FITTING	08 08
81	0503060100	HAND BOOK COMPARTMENT	01 01
82	0503010371	5/16" X 1" BOLT	01 01
83	0503010267	NYLON CLAMP	01 01
84	0503031527	AGRICULTURAL BEARING	02 02
85	0503030275	AGRICULTURAL BEARING	01 01



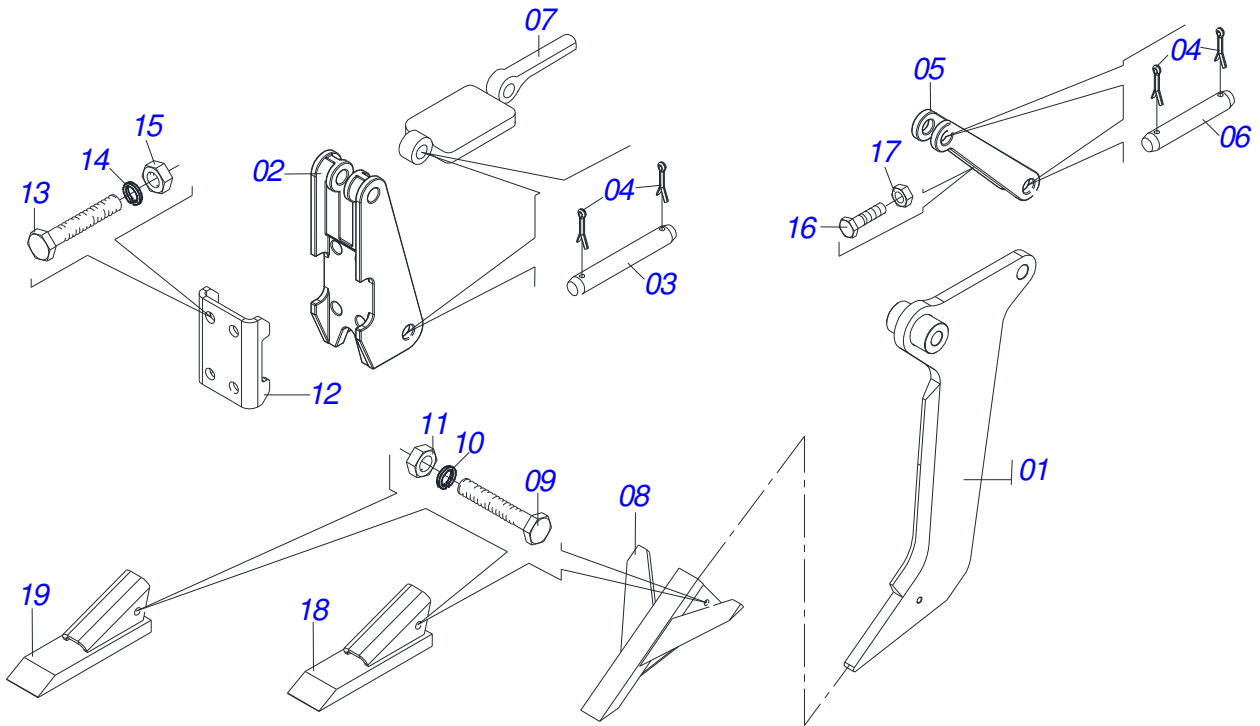
Item	Code	Description	QT
01	0501055624	GEAR BOX	01
01A	0511066625	SPEED BOX VARIADOR	01
02	0501053361	SPEED DOUB BEARING VARIADOR	04
02A	0502011987	DOUBLE HOUSING BEARING	01
02B	0503011410	ROLLER BEARING	02
02C	0503011105	SEAL RING	01
02D	0503011953	5/16" X 1" BOLT	02
02E	0501010694	FLAT WASHER	02
02F	0503010179	SPRING WASHER	02
02G	0503010337	5/16" NUT	02
03	0521013283	SPEED AXLE TRANSMISSION	01
04	0551015668	SQUARE SHAFT	01
05	0503010292	0.2" X 1.6" SPRING PIN	05
06	0501069700	FERTILIZER GEAR ASSY	02
07	0521010691	AXLE FASTENER	04
08	0503010373	1/4" X 2" BOLT	04
09	0511017303	FLAT WASHER	04
10	0503010143	SPRING WASHER	04
11	0503010144	1/4" NUT	04
12	0521018630	1.4" X SQUARE 0.8" WASHER	04
13	0503031527	AGRICULTURAL BEARING	04
14	0511060393	CHAIN TENSIONER ASSY	01
15	0503031805	11Z 1/2" GEAR	02
16	0503010302	501019 SEAL RING	02
17	0503010002	1800 GREASE FITTING	01
18	0503031367	SPRING	01
19	0502011758	REAR TENSIONER LEVER	01
20	0501048790	AXLE WITH LINK ASSY	01
20A	0521012476	GEAR BOX LEVER AXLE	01
20B	0503031369	LINK	01
21	0503012143	78 CHAIN X 40-1 LINK + REDUCTION	01



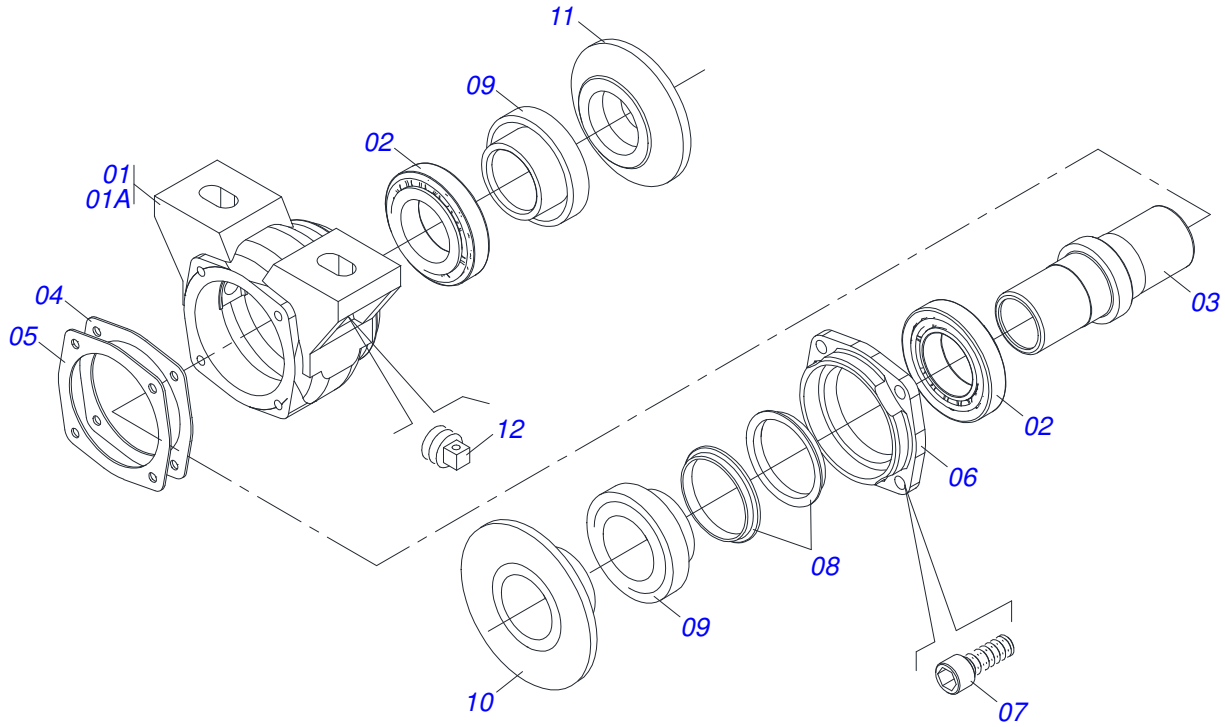
Item	Code	Description	QT
00	0501057624	FERTILIZER BEAM ASSY	01
01	0503061670	COVER ORANGE BOX FERTIL YELLOW	01
02	0511068620	FERTILIZER CONDUCTOR	01
03	0551015492	TUBE COATED	01
04	0551015225	FERTILIZER CONDUCTOR BEARING	02
05	0541014215	BEARING BOLT	04
06	0511017302	FLAT WASHER	04
07	0503010691	1/4" GREASE FITTING	04
08	0551013391	COVER SOCKET	02
09	0503010362	1/8" X 1.1/4" COTTERPIN	02



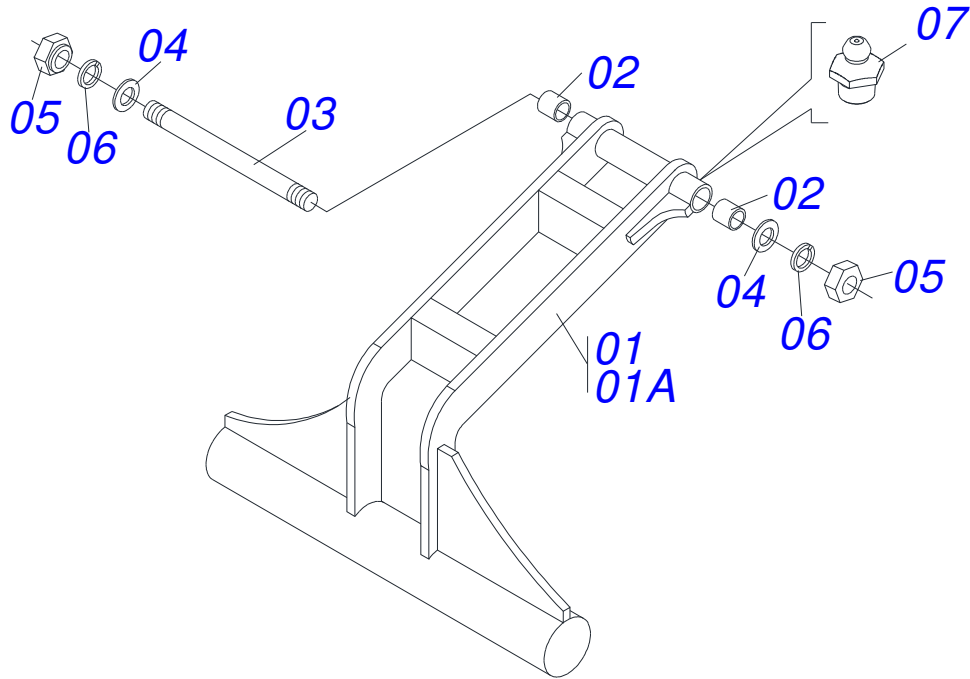
Item	Code	Description	QT
01	0502012370	WITH BLADE DISC SUPPORT	01
02	0541018869	FLAT WASHER	01
03	0541018868	FLAT WASHER	01
04	0503010004	1890 GREASE FITTING	01
05	0501010098	HEX BOLT 3/4 UNC X 2 C S G.5 ZN	01
06	0503010023	SPRING WASHER	01
07	0501010500	3/4"X3"BOLT	04
08	0503010023	SPRING WASHER	04
09	0503010014	3/4" NUT	04
10	0501056943	24" BLADE DISC	01
10A	0501057526	DISC HUB	01
10B	0603030044	24" X 0.2" FLAT PLAIN DISC	01
10C	0521011824	BLADE DISC FLANGE OUTER	01
10D	0503011172	1/2" X 2-1/2" BOLT	08
10E	0503010060	1/2" NUT	16
10F	0511067105	BLADE DISC FORK	01
10G	0501069637	AXLE NUT LOCK	02
10H	0521012664	FLAT WASHER	02
10I	0501010087	1.1/4" NUT	02
10J	0503010962	5/8" X 1-1/4" BOLT	02
10K	0503010027	SPRING WASHER	02



Item	Code	Description	QT
01	0511064994	FURROWER ARM	01
02	0502011165	REAR FIXER	01
03	0511015688	1.1" X 7.1" COUPLING SHAFT	02
04	0503010571	1/4" X 1.1/2 COTTERPIN	08
05	0502011164	SUPPORT SPRING	01
06	0511015689	1.1" X 3.5" COUPLING SHAFT	02
07	0521011631	AUTOMATIC RESET	01
08	0511067838	POINT SUBSOILER	01
09	0503011236	3/8" X 2" BOLT	01
10	0503011443	SPRING WASHER	01
11	0503010026	3/8" NUT	01
12	0502011166	FRONT FIXER	01
13	0511019527	1" X 8" BOLT	04
14	0503011438	SPRING WASHER	04
15	0503010340	1" NUT	04
16	0503011195	7/16" X 1.3/4" BOLT	01
17	0503010244	7/16" NUT	01
18	0511067842	SUBSOILER TIP	02
19	0511067841	POINT SUBSOILER	02



Item	Code	Description	QT
00	0501049008	7.2" X 1-1/4" OIL BATH BEARING	01
00A	0501049009	7.2" X 1-1/4" OIL BATH BEARING	01
01	0502011765	HOUSING DM	01
01A	0502011766	HOUSING DM	01
02	0503010111	30210 ROLLER BEARING	02
03	0502040218	AXLE	01
04	0503030013	4.4" X 3.5" X 0.004" JOINT	02
05	0503030684	4.4" X 3.5" X 0.004" JOINT	01
06	0502020424	HOUSING CAP DM	01
07	0503010134	3/8" X 1" BOLT	04
08	0503030026	SEAL LP JB-253	02
09	0502010541	SEAL RETAINER	02
10	0502010073	OUTER FLANGE	01
11	0502010074	INNER FLANGE	01
12	0503010856	OIL PLUG	01



Item	Code	Description	QT
01	0501054945	REAR LEVELING	01
01A	0511064998	REAR LEVELING	01
02	0531010280	SLEEVE ARM REAR LEVELING	02
03	0531010281	REAR LEVELING AXLE ARM	01
04	0521012087	FLAT WASHER	02
05	0503010063	1" SELF-ALIGNING NUT	02
06	0503010012	1" SPRING WASHER	02
07	0503010002	1800 GREASE FITTING	02







email: [civemasa@civemasa.com.br](mailto:civemasa@civemasa.com.br)

[www.civemasa.com.br](http://www.civemasa.com.br)

Phone: +55 16.3382.8222

Fax: +55 16.3382.8355

## MARCHESAN IMPLEMENTOS E MÁQUINAS AGRÍCOLAS "TATU" S.A.

Av. Marchesan, 1979 - Post Office box, 131 - Cep 15994-900 - Matão - Sp - Brasil

CNPJ 52.311.289/0001-63 | Inst. Est.441.000.151.114

**Technical Publications: Elaboration**

ALESSANDRA PATRICIA KAWAHARA CARRILI

**Technical Publications: Revision**

JOSÉ DOMINGOS GASPARI

Contact Catálogo:

E-mail = [jgaspari@marchesan.com.br](mailto:jgaspari@marchesan.com.br)

ORIGINAIS PARTS  
CIVEMASA

