

PARTS CATALOGUE

GIC 16/36/40

Code: 0501091633



Series: S-0503

Review: ABRIL/2016

ORIGINAL PARTS
CIVEMASA

civemasa

INDEX

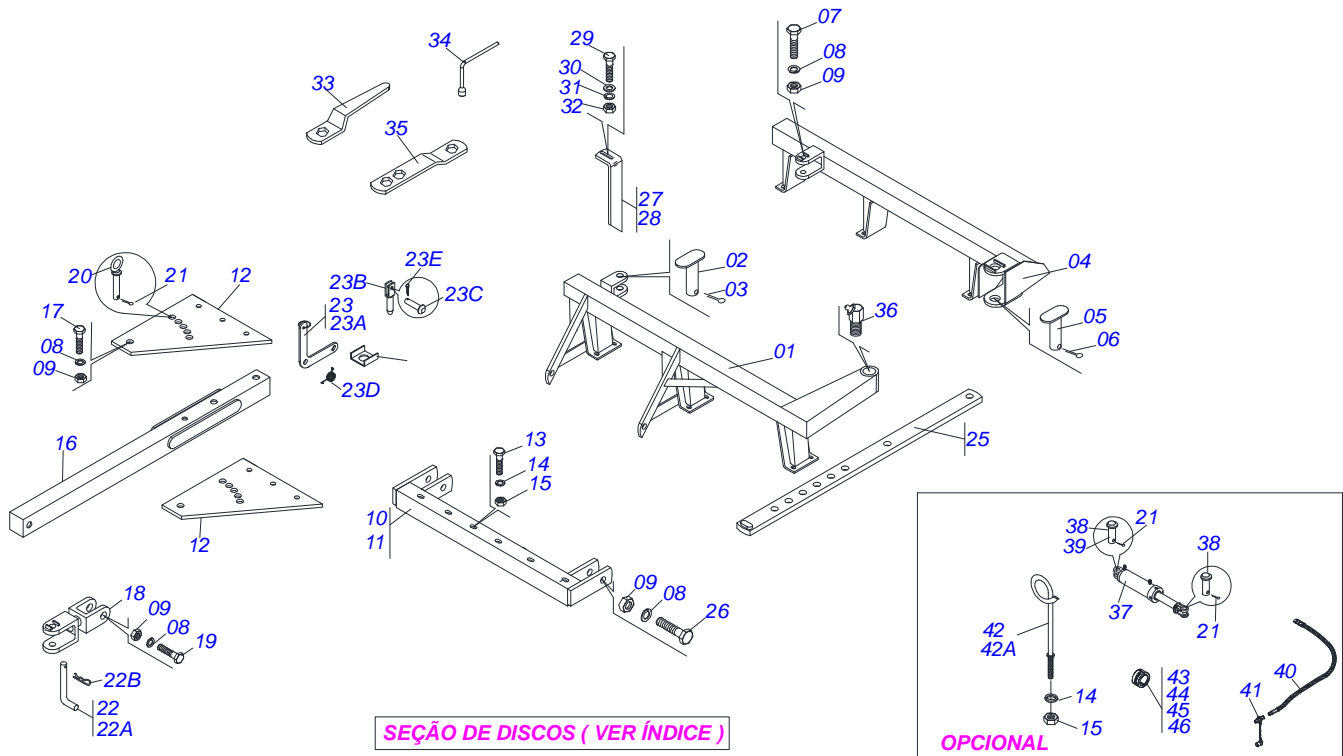
0909090901	GIC 16	1
0909090897	GIC 36/40	2
0511059156	HYDRAULIC CYLINDER 50,80 X 101,60 X 680 X 399	3
0909090902	GANG DISC	4
0909090903	GANG DISC GIC 36/40	5
0909090905	OIL BEARING ASSY	6
0501046916	262 X 1-5/8" GRESABLE BRG ASSY,FG	7
0501042554	DRAWBAR JACK	8

ATTENTION: **IMPORTANT**

CIVEMASA RESERVES THE RIGHT AT ANY TIME TO MAKE IMPROVEMENTS IN THE DESIGN, MATERIAL OR SPECIFICATIONS OF MACHINERY, EQUIPMENT OR PARTS WITHOUT THEREBY BECOMING LIABLE TO MAKE SIMILAR CHANGES IN MACHINERY, EQUIPMENT OR PARTS PREVIOUSLY SOLD.

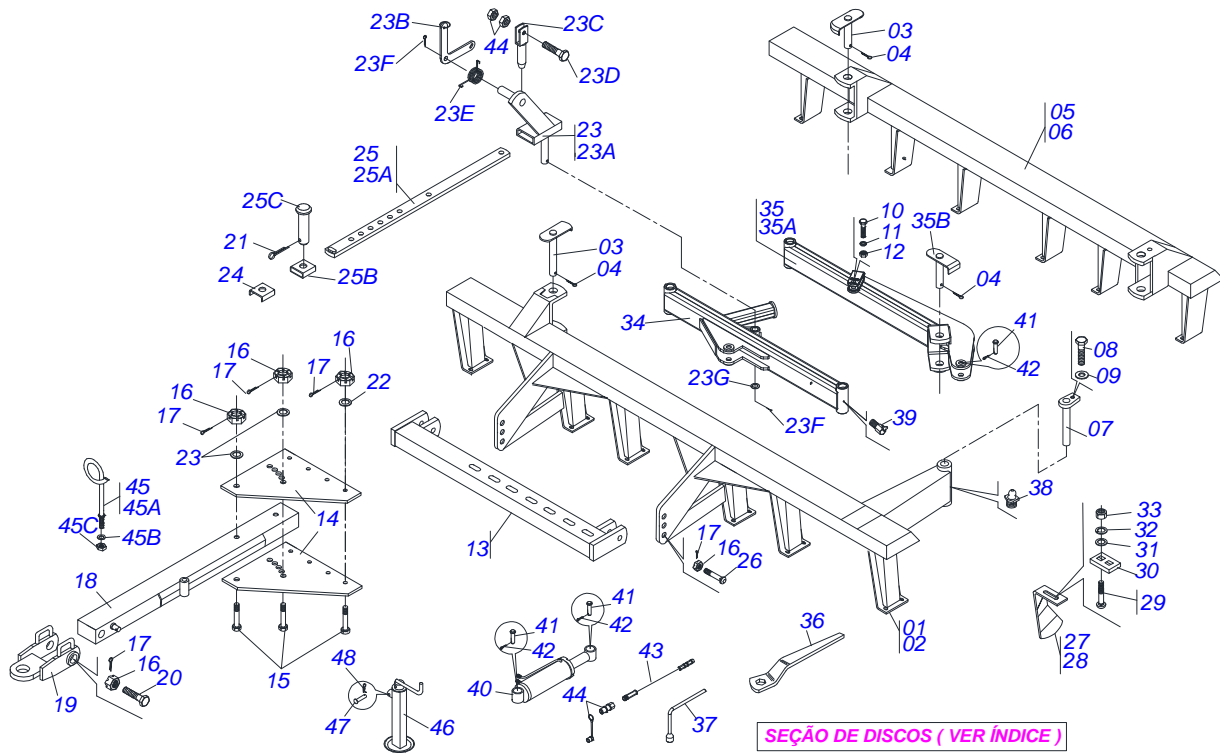
ORIGINAL PARTS
CIVEMASA

civemasa



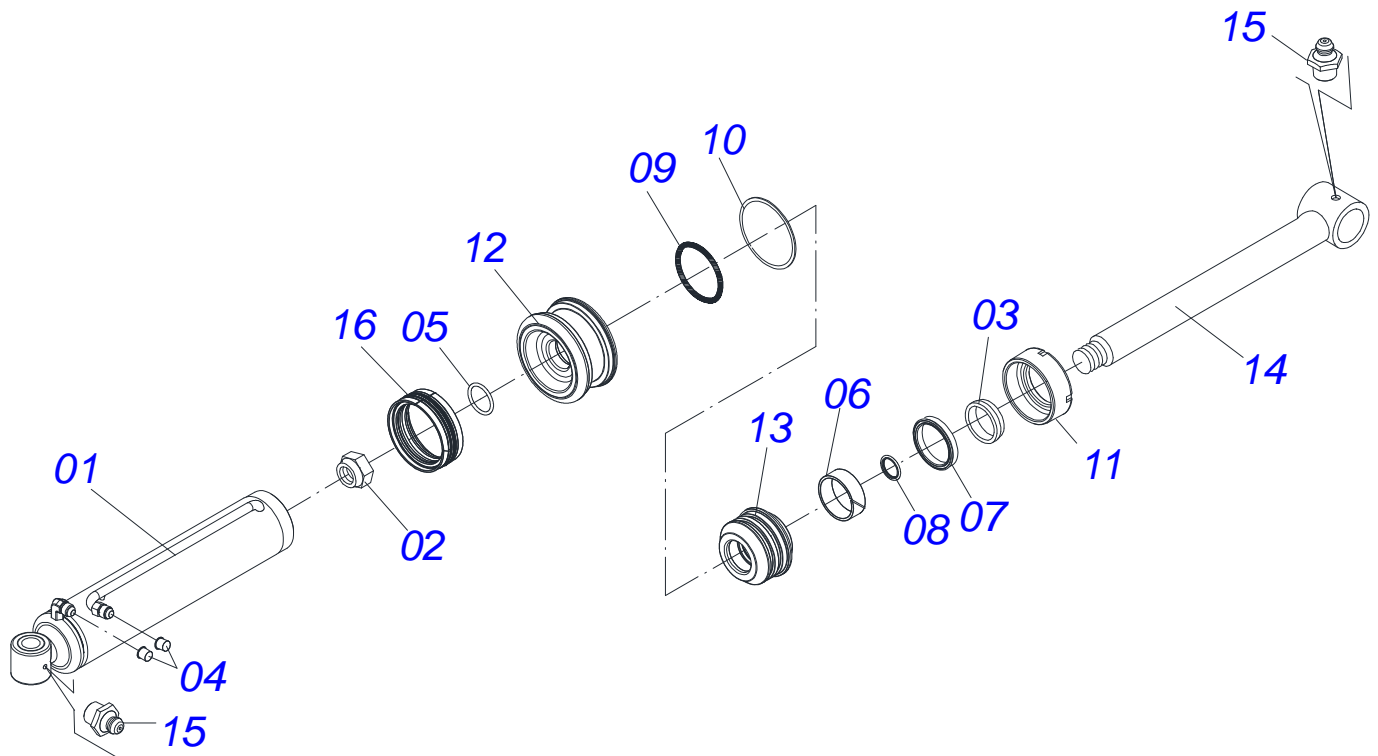
Item	Code	Description	QT
01	0521063225	FRONT FRAME GIC 16	01
02	0521010644	1.5" X 8.4" COUPLING SHAFT	03
03	0503010534	3/8" X 2-1/2" COTTERPIN	03
04	0501065527	REAR FRAME	01
05	0501065487	2.4" X 123" COUPLING SHAFT	01
06	0503010073	3/8" X 3-1/2" COTTERPIN	01
07	0503011432	1" X 4" BOLT	01
08	0503010012	1" SPRING WASHER	05
09	0501010059	1" NUT	05
10	0501043831	DRAWBAR ASSY	01
11	0501065545	OFFSET BAR	01
12	0501010241	UPPER /LOWER PLATE	02
13	0503011198	3/4" X 6" BOLT	03
14	0503010023	3/4" SPRING WASHER	04
15	0503010014	3/4" NUT	05
16	0501060188	DRAWBAR ASSY	01
17	0501010191	1" X 6" BOLT	01
18	0521061775	TRACTOR HITCH	01
19	0501010060	1" X 6-1/2" BOLT	01
20	0501068993	0.9" X 5.5" COUPLING SHAFT	01
21	0503010571	1/4" X 1.1/2" COTTERPIN	04
22	0501040343	DRAWBOLT ASSY	01
22A	0521010453	COUPLING SHAFT	01
22B	0503031035	HAIR PIN	01
23	0501040757	ADJUSTMENT LEVER ASSY	01
23A	0501060196	ADJUSTMENT LEVER	01
23B	0501060185	ADJUSTMENT LOCK	01
23C	0521010624	0.4" X 1.5" COUPLING SHAFT	01
23D	0503030025	1.4" X 0.2" TORSION SPRING	01
23E	0503010071	3/16" X 1" COTTERPIN	01
24	0501011649	U 1.2" X 3.1" X 3/16" BAR	01
25	0501064197	38" ADJUSTMENT BAR	01
26	0501011547	1" X 4-1/2" BOLT	02

Item	Code	Description	QT
27	0501064168	FRONT SCRAPER	04
28	0501064167	REAR SCRAPER	04
29	0503011082	1/2" X 1.3/4" BOLT	16
30	0511017302	FLAT WASHER	16
31	0503010019	1/2" SPRING WASHER	16
32	0503010060	1/2" NUT	16
33	0501011431	1-3/4" CABLE FLAT WRENCH	02
34	0503016140	3/4" WRENCH CABLE CYLINDRICAL	01
35	0511018451	5/8" X 3/4" X 1" UNIVERSAL WRENCH	01
36	0503010003	3/8" GREASE FITTING	01
37	0501044370	1.7" X 3.4" X 20" X 8" HYDRAULIC CYLINDER	01
38	0521010576	0.9" X 3.7" COUPLING SHAFT	02
39	0521010584	0.9" X 5.7" COUPLING SHAFT	01
40	0501080361	3/8" X 157" TR-TM HOSE ASSY	02
41	0501053834	QUICK CONECTION (MALE) 1/2NPT	02
42	0501040257	3/4" X 47.2" HOSE HOLDER ASSY	01
42A	0501013935	HOSE HOLDER	01
43	0501047884	0.98" ROD STOP	01
44	0501047886	1.38" ROD STOP	01
45	0501047888	1.77" ROD STOP	01
46	0501047889	1.96" ROD STOP	01

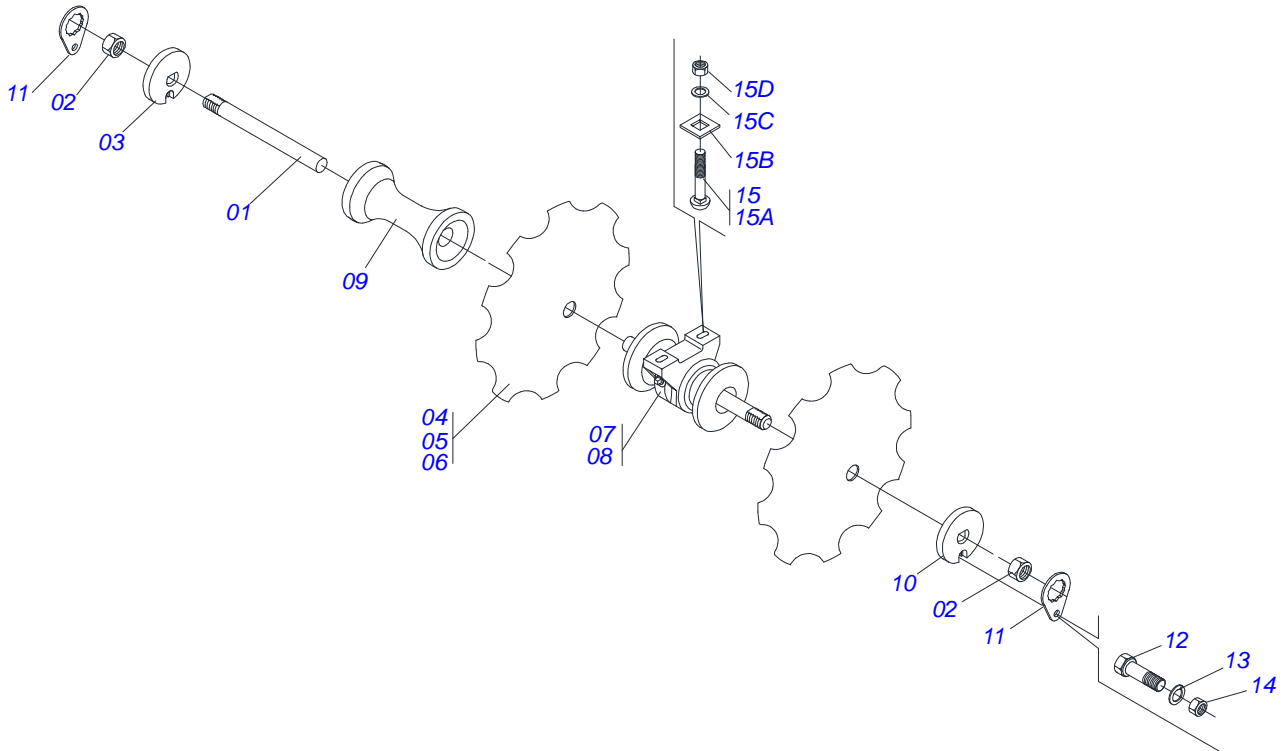


Item	Code	Description	36 40
01	0521065822	FRONT FRAME GIC 36	01
02	0521065684	FRONT FRAME GIC 40	01
03	0521010644	1.5" X 8.4" COUPLING SHAFT	02 02
04	0503010534	3/8" X 2-1/2" COTTERPIN	04 04
05	0521065823	REAR FRAME GIC 36	01
06	0521065685	REAR FRAME GIC 40	01
07	0501062185	2.5" X 13.6" COUPLING SHAFT	01 01
08	0501010276	1" X 3" BOLT	01 01
09	0501011445	FLAT WASHER	01 01
10	0503011432	1" X 4" BOLT	01 01
11	0503010012	1" SPRING WASHER	01 01
12	0501010059	1" NUT	01 01
13	0521062520	OFFSET BAR	01 01
14	0501010272	UPPER/LOWER PLATE	02 02
15	0501010295	1-1/2" X 6.9" BOLT	05 05
16	0501011301	1.1/2" CASTLE NUT	08 08
17	0503010010	1/4" X 2.1/2" COTTERPIN	08 08
18	0501060316	DRAWBAR ASSY	01 01
19	0501060317	TRACTOR HITCH	01 01
20	0501016415	1-1/2" X 9.6" BOLT	01 01
21	0503010571	1/4" X 1.1/2" COTTERPIN	01 01
22	0501012916	FLAT WASHER	05 05
23	0501040057	ADJUSTMENT ASSY	01 01
23A	0501060314	ADJUSTMENT BOX	01 01
23B	0501060196	ADJUSTMENT LEVER	01 01
23C	0501060185	ADJUSTMENT LOCK	01 01
23D	0501010077	1/2" X 2" BOLT	01 01
23E	0503030025	1.4" X 0.2" TORSION SPRING	01 01
23F	0503010071	3/16" X 1" COTTERPIN	02 02
23G	0501010549	FLAT WASHER	01 01
24	0501011649	U 1.2" X 3.1" X 3/16" BAR	01 01
25	0501041216	ADJUSTMENT BAR ASSY	01 01
25A	0501013284	ADJUSTMENT BAR	01 01

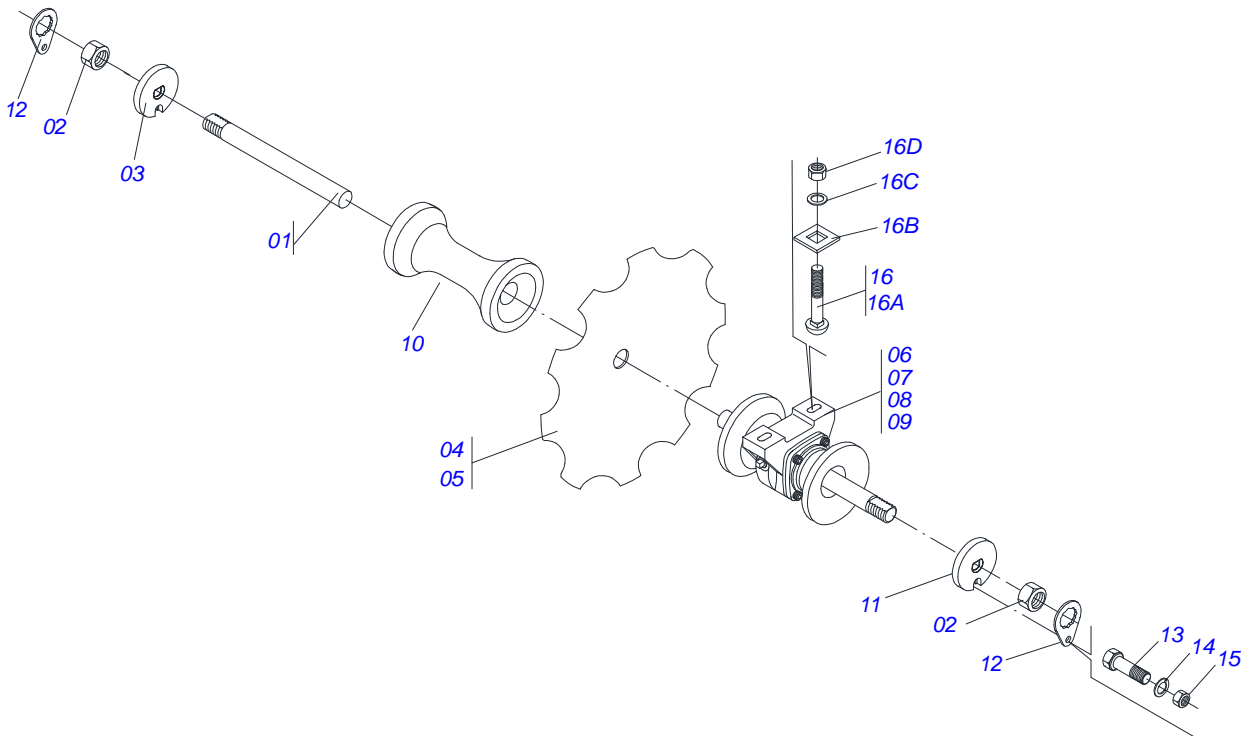
Item	Code	Description	36	40
25B	0501060434	BEATER BOX	01	01
25C	0521010573	0.9" X 3.1" COUPLING SHAFT	01	01
26	0501016416	1-1/2" X 5.4" BOLT	02	02
27	0501061588	FRONT SCRAPER	11	13
28	0501062732	REAR SCRAPER	11	13
29	0503010740	1/2" X 2" BOLT	52	
30	0501010242	SCRAPER LOCK	22	26
31	0511017302	FLAT WASHER	44	52
32	0503010019	1/2" SPRING WASHER	44	52
33	0503010060	1/2" NUT	46	54
34	0501060448	FRONT STABILIZER BAR	01	01
35	0501060450	REAR STABILIZER BAR ASSY	01	01
35A	0501060313	REAR STABILIZER BAR	01	01
35B	0501063253	2" X 11.9" COUPLING SHAFT	01	01
36	0501011431	1-3/4" CABLE FLAT WRENCH	02	02
37	0503016140	3/4" WRENCH CABLE CYLINDRICAL	01	01
38	0503010002	GREASE FITTING	03	03
39	0503010003	3/8" GREASE FITTING	01	01
40	0511059156	HYDRAULIC CYLINDER 50,80 X 101,60 X 680 X 399	01	01
41	0521010546	1.2" X 5.7" COUPLING SHAFT	02	02
42	0503010523	1/4" X 2" COTTERPIN	02	02
43	0501080001	1/2" X 177" TR-TM HOSE ASSY	02	02
44	0503011627	QUICK CONNECTION (MALE) AGR 1/2 NPT	02	02
45	0501040257	3/4" X 47.2" HOSE HOLDER ASSY	01	01
45A	0501013935	HOSE HOLDER	01	01
45B	0503010023	3/4" SPRING WASHER	01	01
45C	0503010014	3/4" NUT	02	02
46	0501042554	DRAWBAR JACK	01	01
47	0521010549	COUPLING SHAFT	01	01
48	0503030168	HAIR PIN	01	01



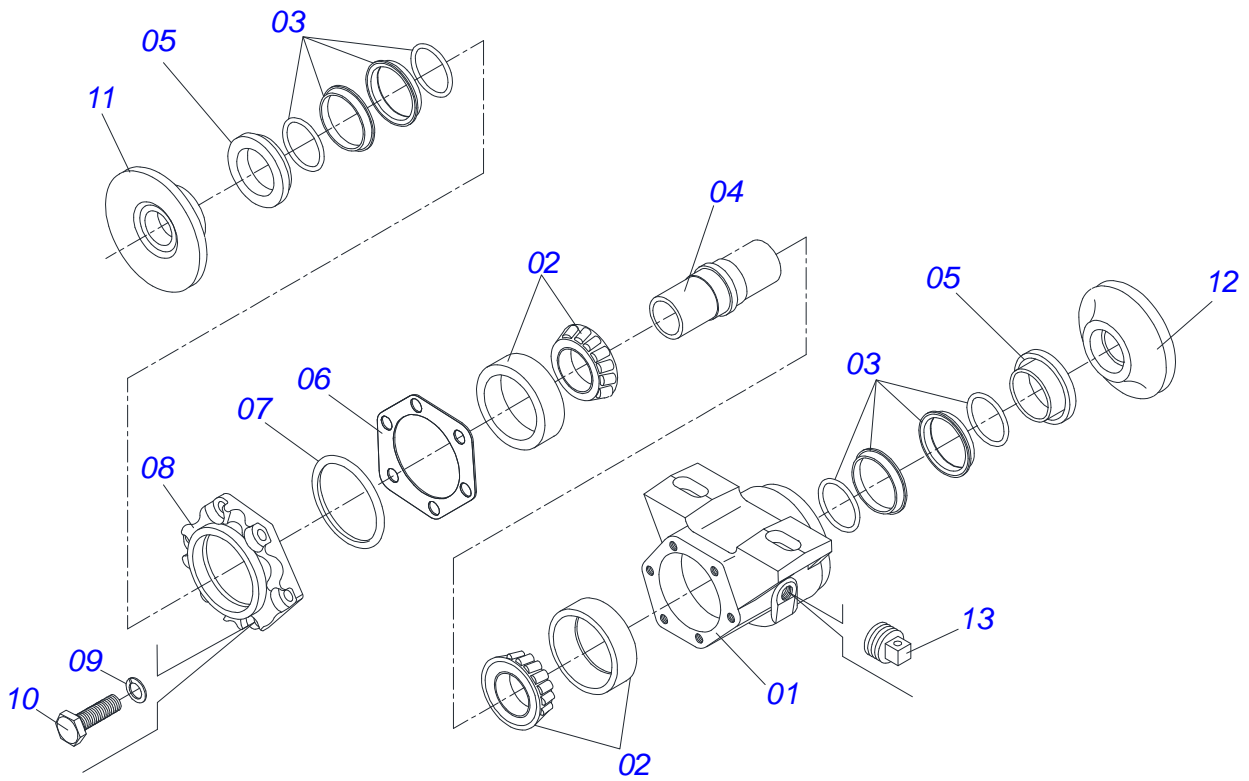
Item	Code	Description	QT
001	0521066349		01
002	0503010817	1.1/4" UNF SELF ADJUSTING NUT	01
003	0503010039	D-2000 SCRAPER RING	01
004	0503030387	PLUG	02
005	0503018029	2-217 O'RING	01
006	0503018025	RING GUIDE	01
007	0503018026	1870-2000-375 B GASKET	01
008	0503018024	RING BS	01
009	0503010338	2-342 N 3006-9B O'RING	02
010	0503011061	8-342 BACK-UP RING	02
011	0502012822	101,60 MOBILE COVER	01
012	0502012820	50,80 X 101,60 PISTON	01
013	0502012821	50,80 X 101,60 RING SUPPORT	01
014	0511070665		01
015	0503010002	GREASE FITTING	02
016	0503015633	SEALING SELEMASTER	01



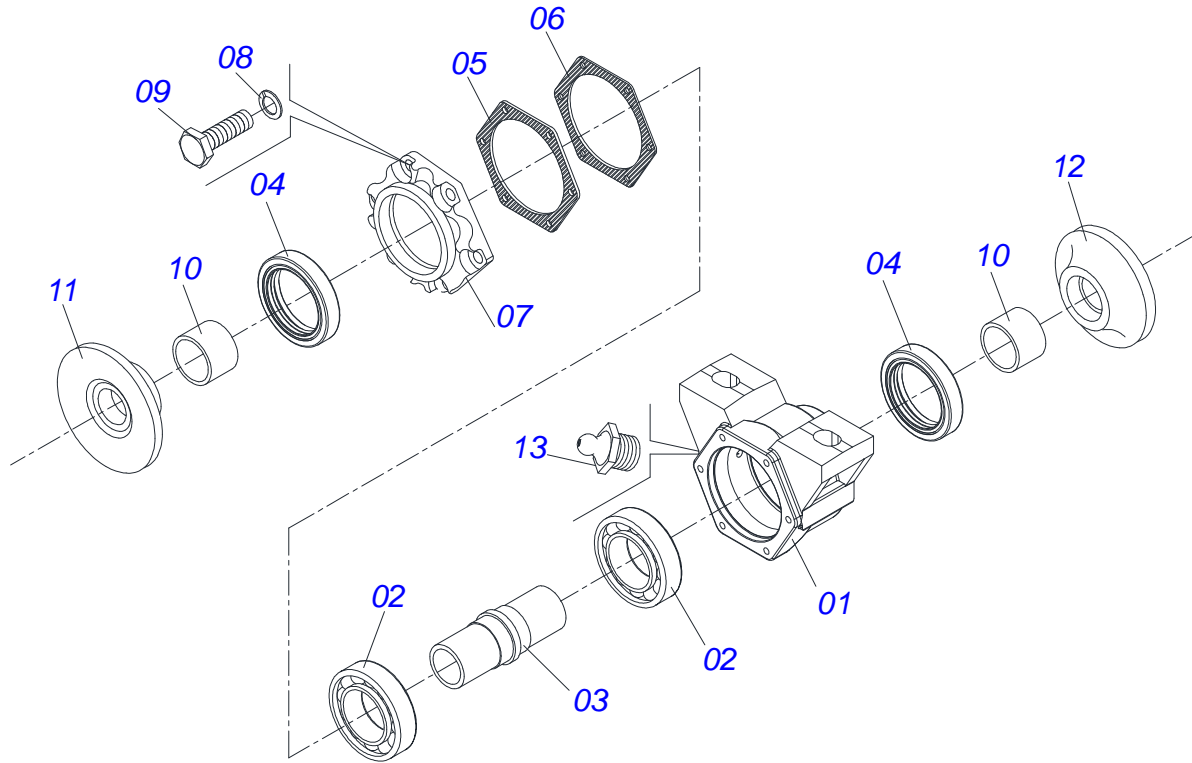
Item	Code	Description	QT
01	0501019015	1-5/8 X 80" AXLE	02
02	0502040640	1.5/8" 2.3/4" NUT	04
03	0502011048	1-5/8" EXTERNAL AXLE WASHER	02
04	0602033005	26" X 0.2" NOTCHED DISC BLADE	16
05	0602037004	28" X 0.2" NOTCHED DISC BLADE	16
06	0602037006	28" X 0.3" NOTCHED DISC BLADE	16
07	0501046925	262 X 1-5/8" OIL BATH BRG ASSY,FG	03
08	0501043202	262 X 1-5/8" OIL BATH BRG ASSY,RG	03
09	0502010703	10.35" 1-5/8" SPACER	08
10	0502011047	1-5/8" INNER AXLE WASHER	02
11	0511014339	1-5/8" 2.8" NUT LOCK	04
12	0503011267	5/8" X 1.1/2" BOLT	04
13	0503010027	5/8" SPRING WASHER	04
14	0503010013	5/8" NUT	04
15	0511040034	3/4" X 3-1/4" BOLT ASSY	12
15A	0501017303	3/4" X 3-1/4" BOLT	12
15B	0501010949	3/4" SQUARE WASHER	12
15C	0501010322	FLAT WASHER	12
15D	0503010014	3/4" NUT	24



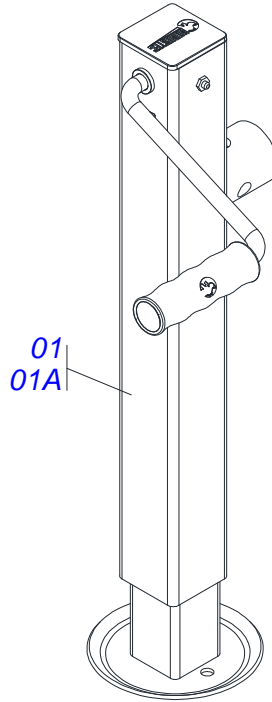
Item	Code	Description	36 40
01	0501019012	1-5/8" X 59" AXLE	06 06
02	0502040640	1.5/8" 2.3/4" NUT	12 16
03	0502011048	1-5/8" EXTERNAL AXLE WASHER	06 08
04	0602033005	26" X 0.2" NOTCHED DISC BLADE	36 40
05	0602037077	28" X 0.3" NOTCHED DISC BLADE	36 40
06	0501046916	262 X 1-5/8" GRESABLE BRG ASSY,FG	06 08
07	0501043090	262 X 1-5/8" GRESABLE BRG ASSY,RG	06 08
08	0501046925	262 X 1-5/8" OIL BATH BRG ASSY,FG	06 08
09	0501043202	262 X 1-5/8" OIL BATH BRG ASSY,RG	06 08
10	0502010703	10.35" 1-5/8" SPACER	18 16
11	0502011047	1-5/8" INNER AXLE WASHER	06 08
12	0511014339	1-5/8" 2.8" NUT LOCK	12 16
13	0503011267	5/8" X 1.1/2" BOLT	12 16
14	0503010027	5/8" SPRING WASHER	12 16
15	0503010013	5/8" NUT	12 16
16	0511040034	3/4" X 3-1/4" BOLT ASSY	24 32
16A	0501017303	3/4" X 3-1/4" BOLT	24 32
16B	0501010949	3/4" SQUARE WASHER	24 32
16C	0501010322	FLAT WASHER	24 32
16D	0503010014	3/4" NUT	48 64



Item	Code	Description	QT
01	0502020481	HOUSING DM	01
02	0503010005	32212 ROLLER BEARING	02
03	0503030027	DUO-CONE SEAL	02
04	0502010900	BEARING AXLE	01
05	0502010735	SEAL RETAINER	02
06	0503030030	5.6" X 4.4" X 0.01" GASKET	02
07	0503030685	5.5" X 4.4" X 0.003" GASKET	02
08	0502020161	BEARING CAP	01
09	0503011443	3/8" SPRING WASHER	06
10	0503010237	3/8" X 1" BOLT	06
11	0502040239	OUTER FLANGE	01
12	0502040240	INNER FLANGE	01
13	0503010856	3/8" OIL PLUG	01



Item	Code	Description	QT
00	0501046916	262 X 1-5/8" GRESABLE BRG ASSY,FG	01
01	0502020479	BEARING HOUSING, FG	01
02	0503010005	32212 ROLLER BEARING	02
03	0502010900	BEARING AXLE	01
04	0503010087	02017-GB GREASE SEAL	02
05	0503030030	5.6" X 4.4" X 0.01" GASKET	03
06	0503030685	5.5" X 4.4" X 0.003" GASKET	02
07	0502020523	BEARING CAP	01
08	0503011443	3/8" SPRING WASHER	06
09	0503010237	3/8" X 1" BOLT	06
10	0502040591	SPACING BUSHING	02
11	0502040239	OUTER FLANGE	01
12	0502040240	INNER FLANGE	01
13	0503010002	GREASE FITTING	01



Item	Code	Description	QT
01	0511041259	DRAWBAR JACK ASSY	
01A	0503062157	HEADER JACK	01

ANNOTATIONS



email: civemasa@civemasa.com.br

www.civemasa.com.br

Phone: +55 16.3382.8222

Fax: +55 16.3382.8355

MARCHESAN IMPLEMENTOS E MÁQUINAS AGRÍCOLAS "TATU" S.A.

Av. Marchesan, 1979 - Post Office box, 131 - Cep 15994-900 - Matão - Sp - Brasil

CNPJ 52.311.289/0001-63 | Inst. Est.441.000.151.114

Drafting and Illustration = GASPARI
e.mail = jgaspari@marchesan.com.br

**ORIGINAIS PARTS
CIVEMASA**

The Civemasa logo, identical to the one at the top of the page, is positioned at the bottom right of the page. It features the word "civemasa" in a bold, italicized, lowercase sans-serif font, with three vertical bars above the letters "i", "v", and "e" in orange, green, and orange colors.