

ROTARY CUTTERS

RTDC2 3100 CL

Code: 0501091621
Series: S-0214
Revision: 00
Revision Date: JULHO/2022

PARTS CATALOGUE


CIVEMASA

PRODUCTS

| Code | Description |
|-------------|--------------------------------------|
| 0121540023 | RTDC2 3100 C/R CL C/PROT CORR S-0214 |

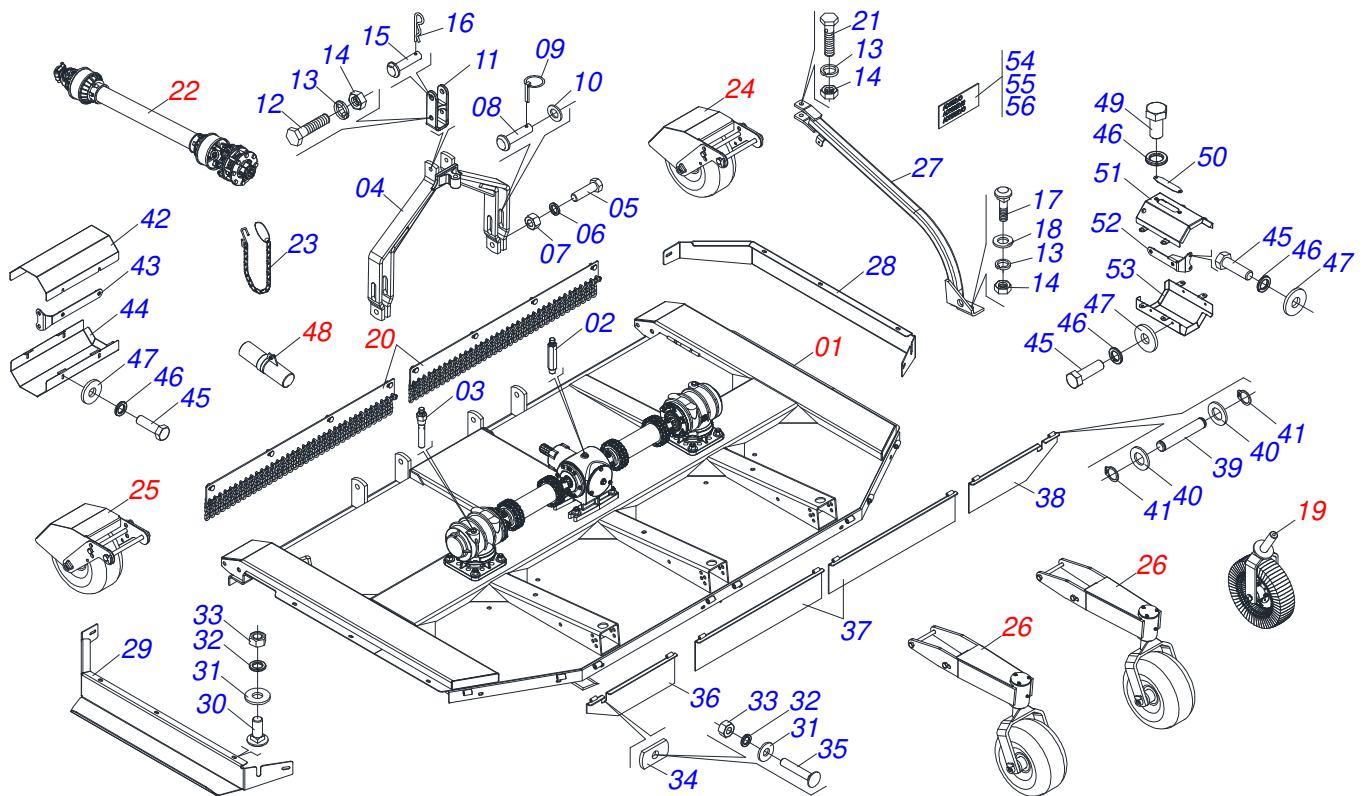
ATTENTION: IMPORTANT

CIVEMASA reserves the right to improve and/or modify the technical features of its products, without obligation to do the same with those products already sold and without prior knowledge of the dealer or the consumer. The photos are only illustrative.



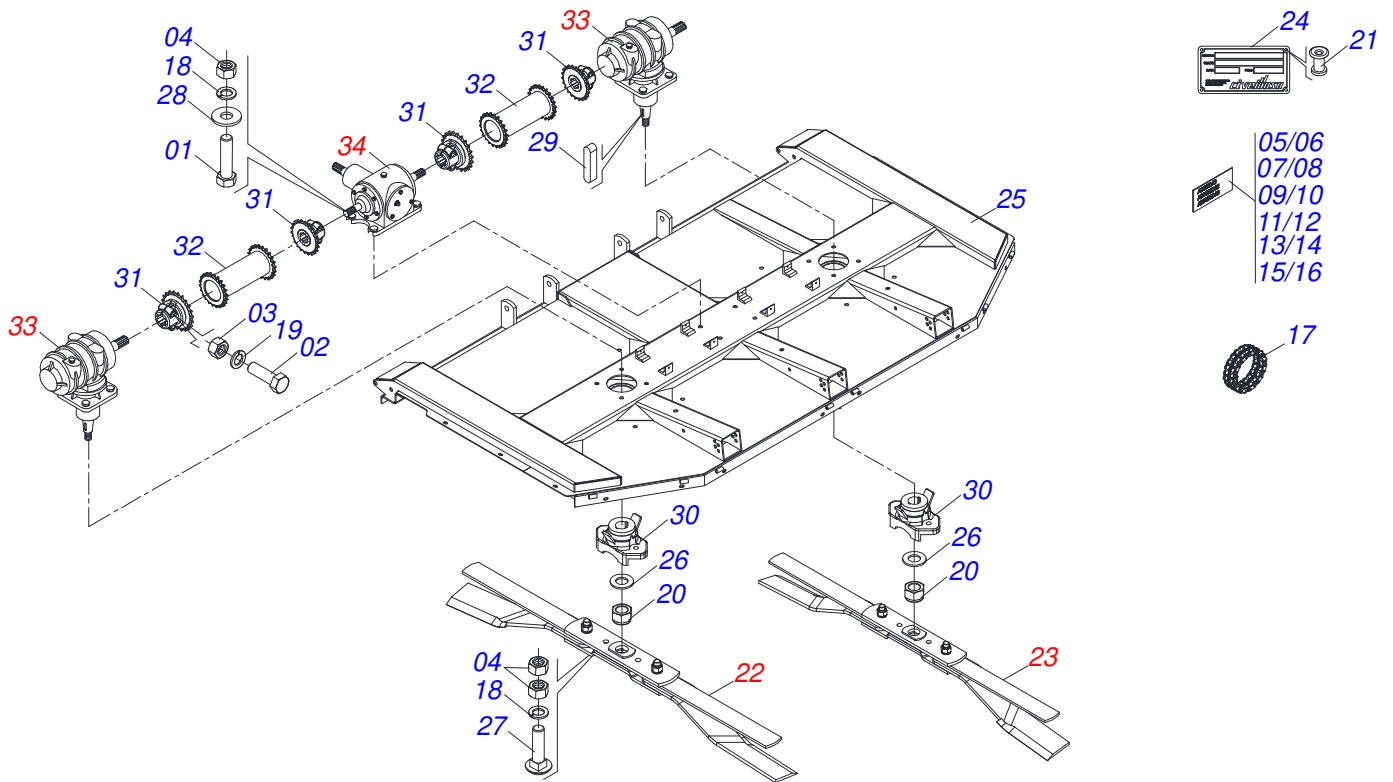
INDEX

| | | | |
|------------|--|-------|----|
| 0909090898 | FRAME | | 1 |
| 0521057055 | SEMI-ASSEMBLED FRAME | | 2 |
| 0501056327 | RIGHT WHEEL SUPPORT | | 3 |
| 0501056328 | 340 SUPPORT WITH LEFT ROCADOR | | 4 |
| 0511042159 | LH MULTIPLIER | | 5 |
| 0511041608 | DOUBLE DISTRIBUTOR | | 6 |
| 0501043642 | RUBBER WHEEL ASSY | | 7 |
| 0521056205 | FRONT CURRENT PROTECTION | | 8 |
| 0511043450 | DRIVE SHAFT | | 9 |
| 0501056010 | FRICTION CLUTCH | | 10 |
| 0511044473 | FRONT WHEEL RIGHT WITH ASSY PROTECTION | | 11 |
| 0511048551 | RIGHT FRONT WHEEL WITH FULL PROTECTION | | 12 |
| 0511044441 | CARRYING WHEELS ASSY | | 13 |
| 0521057755 | MANUAL CANISTER ASSY | | 14 |



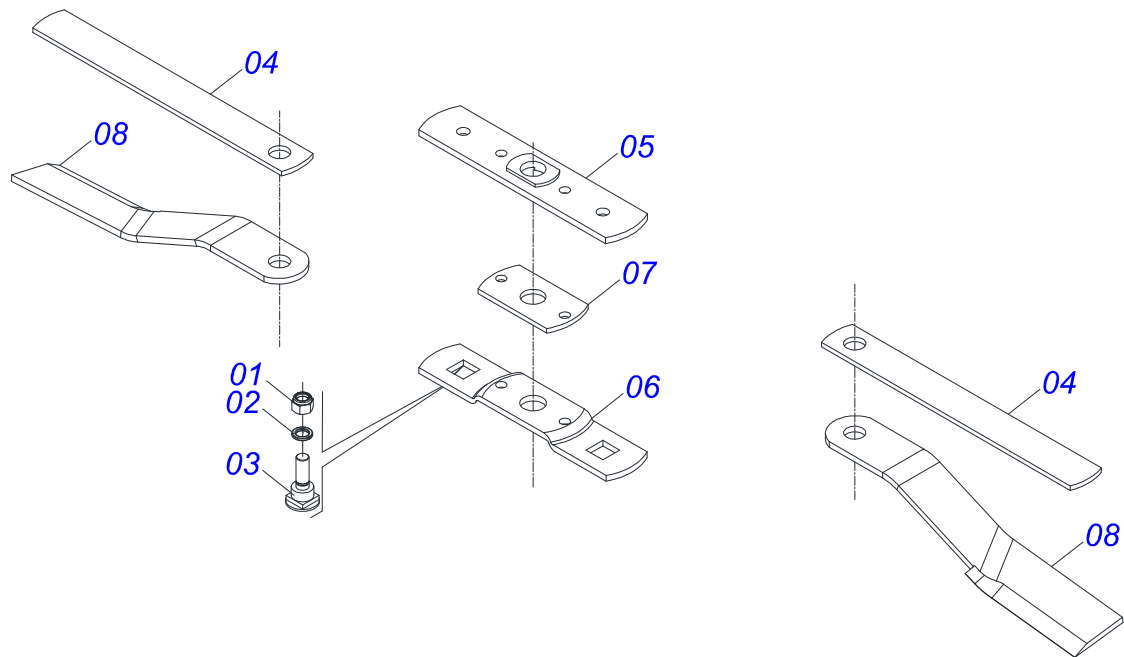
| Item | Code | Description | See page | QT |
|------|------------|--|----------|----|
| 01 | 0521057055 | SEMI-ASSEMBLED FRAME | 2 | 01 |
| 02 | 0501110843 | DOBLE DISTRIBUTOR HOLE | | 01 |
| 03 | 0501110186 | OIL SMALLER LEVEL INDICATOR | | 02 |
| 04 | 0511062006 | DRAWBAR | | 01 |
| 05 | 0503011432 | BOLT | | 02 |
| 06 | 0503010012 | 1" SPRING WASHER | | 02 |
| 07 | 0501010059 | 1.5/8 NUT | | 02 |
| 08 | 0521010629 | 1.1" X 5.1" COUPLING SHAFT | | 02 |
| 09 | 0503030430 | 7/16 X 2" PIN LOCK | | 02 |
| 10 | 0501010065 | 1" SPRING WASHER | | 02 |
| 11 | 0502040922 | HEADER SUPPLEMENT | | 01 |
| 12 | 0503011198 | C3/4" X 6" SCREW | | 01 |
| 13 | 0503010023 | 3/4" SPRING WASHER | | 03 |
| 14 | 0503010014 | 3/4" NUT | | 03 |
| 15 | 0521010578 | COUPLING SHAFT | | 01 |
| 16 | 0503031035 | HITCH PIN CLIP | | 01 |
| 17 | 0501017305 | 3/4" X 2-1/4" BOLT | | 01 |
| 18 | 0501010322 | FLAT WASHER | | 01 |
| 19 | 0501043642 | RUBBER WHEEL ASSY | 7 | 02 |
| 20 | 0521056205 | FRONT CURRENT PROTECTION | 8 | 02 |
| 21 | 0501010216 | 3/4" X 4-1/2" BOLT | | 01 |
| 22 | 0511043450 | DRIVE SHAFT | 9 | 01 |
| 23 | 0503011981 | 17.7" CHAIN WITH HOOK/LINK | | 01 |
| 24 | 0511044473 | FRONT WHEEL RIGHT WITH ASSY PROTECTION | 11 | 01 |
| 25 | 0511048551 | RIGHT FRONT WHEEL WITH FULL PROTECTION | 12 | 01 |
| 26 | 0511044441 | CARRYING WHEELS ASSY | 13 | 02 |
| 27 | 0501067540 | FRENCH HAND | | 01 |
| 28 | 0591010767 | RIGHT SIDE PROTECTION BODY | | 01 |
| 29 | 0591010765 | LEFT SIDE PROTECTION BODY | | 01 |
| 30 | 0501011600 | 1/2" X 1-1/4" BOLT | | 14 |
| 31 | 0511017302 | FLAT WASHER | | 16 |

| Item | Code | Description | See page | QT |
|-------------|-------------|--|-----------------|-----------|
| 32 | 0503010019 | 1/2" SPRING WASHER | | 14 |
| 33 | 0503012682 | 1/2" BSW NUT | | 16 |
| 34 | 0551019824 | RH PROTECTION LOCK | | 02 |
| 35 | 0501011194 | 1/2" X 1-3/4" BOLT | | 02 |
| 36 | 0511069884 | REAR PROTECTION | | 01 |
| 37 | 0511069882 | REAR CENTRAL PROTECTION | | 02 |
| 38 | 0511069883 | REAR PROTECTION | | 01 |
| 39 | 0501213766 | PIN WITH GROOVES | | 08 |
| 40 | 0503011828 | FLAT WASHER | | 16 |
| 41 | 0503013219 | RETAINING RING | | 16 |
| 42 | 0591010764 | TOP COUPLING PROTECTION COVER | | 02 |
| 43 | 0501111017 | BODY SUPPORT COUPLING PROTECTION COVER | | 04 |
| 44 | 0591010766 | LOWER PROTECTION COVER | | 02 |
| 45 | 0503010751 | C3/8" X 1.1/4" HEX BOLT G.5 | | 16 |
| 46 | 0503010025 | 3/8" SPRING WASHER | | 18 |
| 47 | 0501010984 | FLAT WASHER 10,50 X 27 X 3,00 ZN | | 16 |
| 48 | 0521057755 | MANUAL CANISTER ASSY | 14 | 01 |
| 49 | 0503010256 | 3/8" X 3/4" BOLT | | 02 |
| 50 | 0581012546 | LUBRICATION AXIS TRANSMISSION | | 01 |
| 51 | 0501110998 | CARDAN TOP PROTECTION COVER | | 01 |
| 52 | 0501110997 | LARGER SUPPORT COVER PROTECTION | | 02 |
| 53 | 0581011777 | BODY LOWER PROTECTION COAT | | 01 |
| 54 | 0503033647 | APPROVED BADGE | | 01 |
| 55 | 0503031127 | ADHESIVE LABEL | | 03 |
| 56 | 0503034247 | ADHESIVE LABEL POINT LUBRICATION | | 01 |

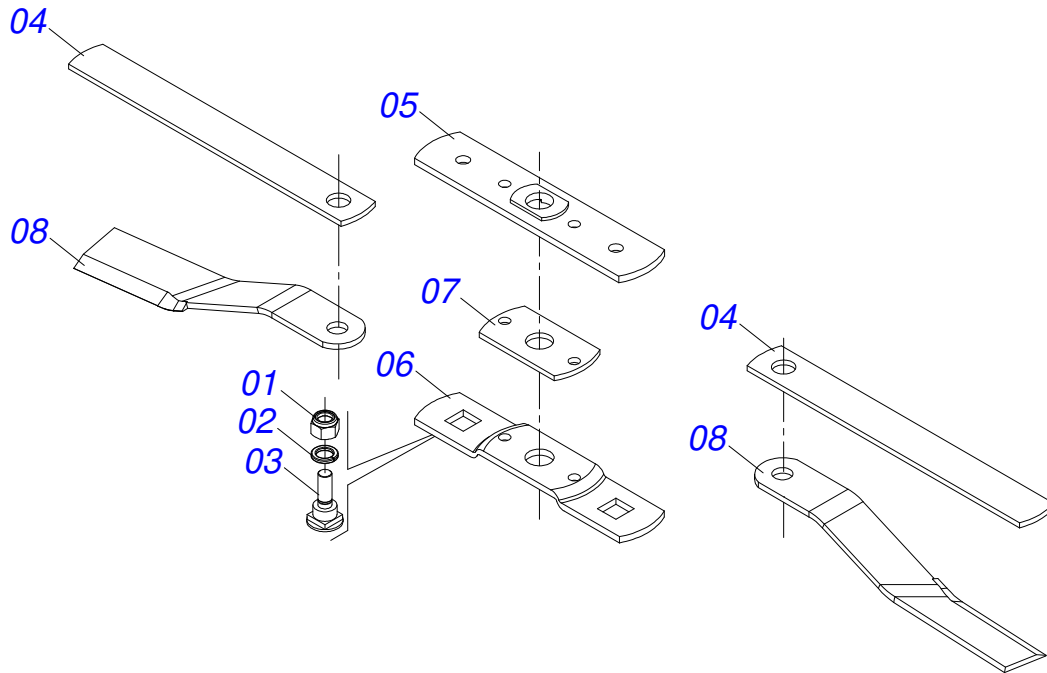


| Item | Code | Description | See page | QT |
|------|------------|-----------------------------------|----------|----|
| 01 | 0503017867 | SCREW 3/4 UNC X 4.1/2 CAPQ G.7 ZN | | 12 |
| 02 | 0503010479 | BOLT | | 08 |
| 03 | 0503010060 | 1/2" NUT | | 08 |
| 04 | 0503010014 | 3/4" NUT | | 20 |
| 05 | 0503035030 | RTDC2 E 3100 CL EMBLEM | | 01 |
| 06 | 0503033238 | BADGE | | 01 |
| 07 | 0503034078 | LIFTING POINTS DECAL | | 04 |
| 08 | 0503032949 | ADHESIVE LABEL | | 01 |
| 09 | 0503032535 | LABEL ADHESIVE CARDAN SIDE | | 01 |
| 10 | 0503032534 | ADHESIVE LABEL | | 01 |
| 11 | 0503032060 | ADHESIVE LABEL | | 02 |
| 12 | 0503031932 | ADHESIVE LABEL | | 01 |
| 13 | 0503031930 | ADHESIVE LABEL | | 01 |
| 14 | 0503031929 | ADHESIVE LABEL | | 01 |
| 15 | 0503031428 | READ MANUAL DECAL | | 01 |
| 16 | 0503031427 | ADHESIVE LABEL | | 01 |
| 17 | 0503013471 | 60-2 X 21 CHAIN LINK + MENDING | | 04 |
| 18 | 0503011442 | 3/4" SPRING WASHER | | 16 |
| 19 | 0503011440 | SPRING WASHER | | 08 |
| 20 | 0503010817 | 1.1/4" SELF LOCKING NUT | | 02 |
| 21 | 0503010001 | 3.2 X 5.5 RIVET | | 04 |
| 22 | 0501056328 | 340 SUPPORT WITH LEFT ROCADOR | 4 | 01 |
| 23 | 0501056327 | RIGHT WHEEL SUPPORT | 3 | 01 |
| 24 | 0503034004 | ALUMINUM IDENTIFICATION LABEL | | 01 |
| 25 | 0521064891 | FRAME | | 01 |
| 26 | 0501017779 | 32 X 60 X 4.75 FLAT WASHER | | 02 |
| 27 | 0501010216 | 3/4" X 4-1/2" BOLT | | 04 |
| 28 | 0501010322 | FLAT WASHER | | 12 |
| 29 | 0501010536 | KEYWAY SQUARE | | 04 |
| 30 | 0502012453 | SUPPORT FLANGE | | 02 |
| 31 | 0511067340 | 1.3/4 TERMINAL | | 04 |

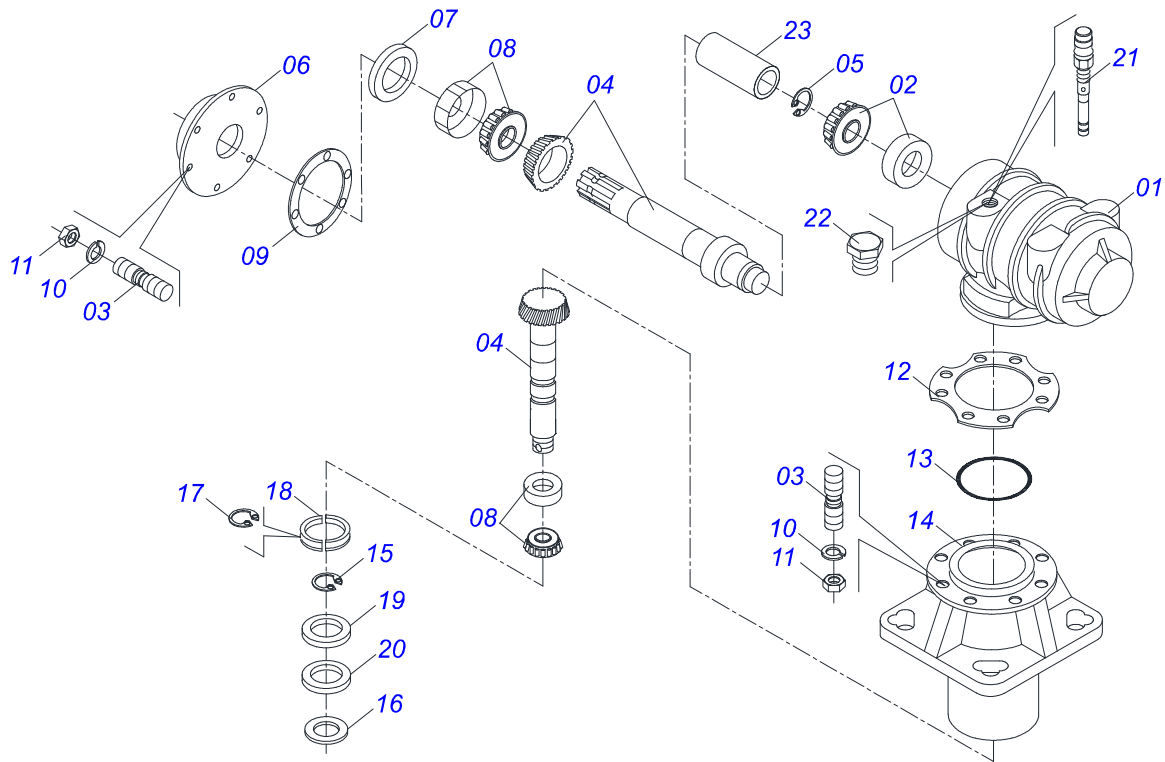
| Item | Code | Description | See page | QT |
|-------------|-------------|--------------------------------|-----------------|-----------|
| 32 | 0511066369 | COUPLING 274,5 (RC2 3100 CL) | | 02 |
| 33 | 0511042159 | LH MULTIPLIER | 5 | 02 |
| 34 | 0511041608 | DOUBLE DISTRIBUTOR | 6 | 01 |



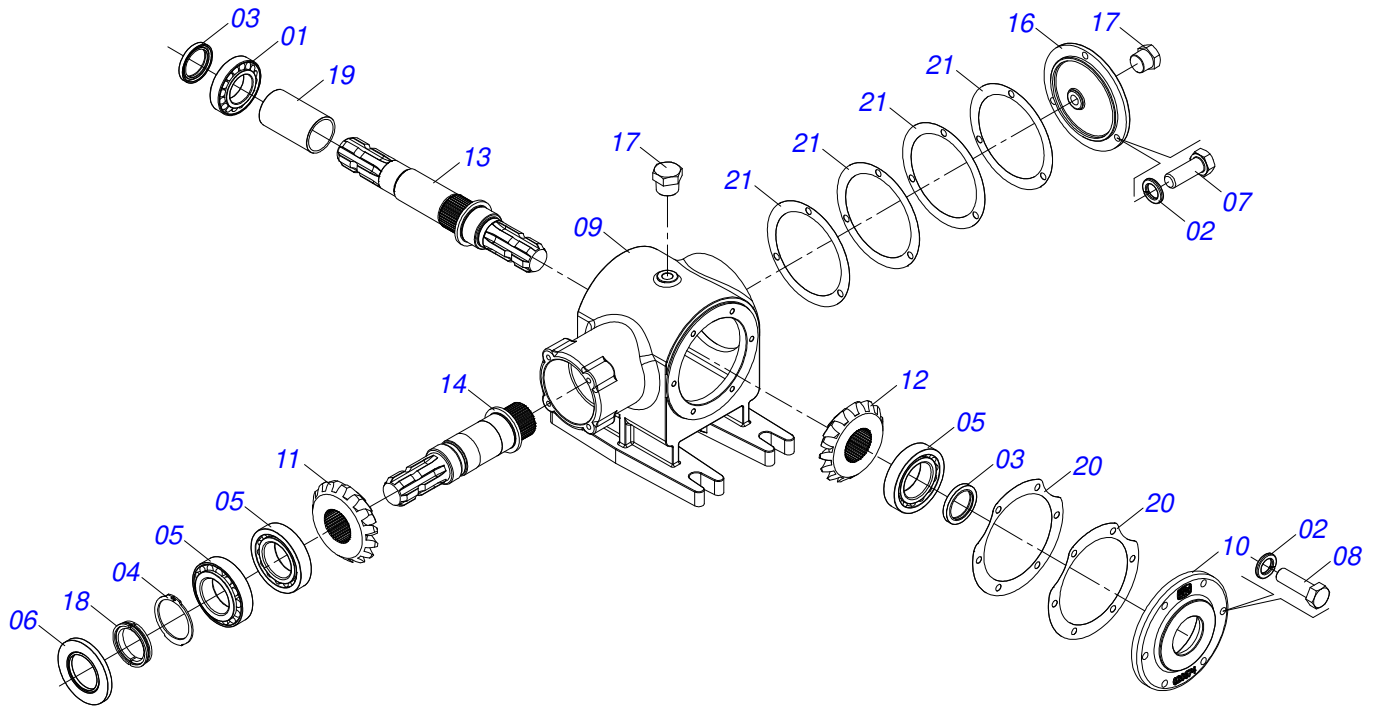
| Item | Code | Description | See page | QT |
|------|------------|---------------------------|----------|----|
| 01 | 0503010812 | 7/8" UNF SELF LOCKING NUT | | 02 |
| 02 | 0503011447 | SPRING WASHER | | 02 |
| 03 | 0531014512 | FASTERNER ROCADORES | | 02 |
| 04 | 0531015055 | 620 FOLLOWER | | 02 |
| 05 | 0561017308 | SUPPORT UPPER BASE | | 01 |
| 06 | 0561017368 | ROTARY LOWER SUPPORT | | 01 |
| 07 | 0561017309 | ROTARY SUPPORT CHOCK | | 01 |
| 08 | 0622400074 | ROTARY CUTTER | | 02 |



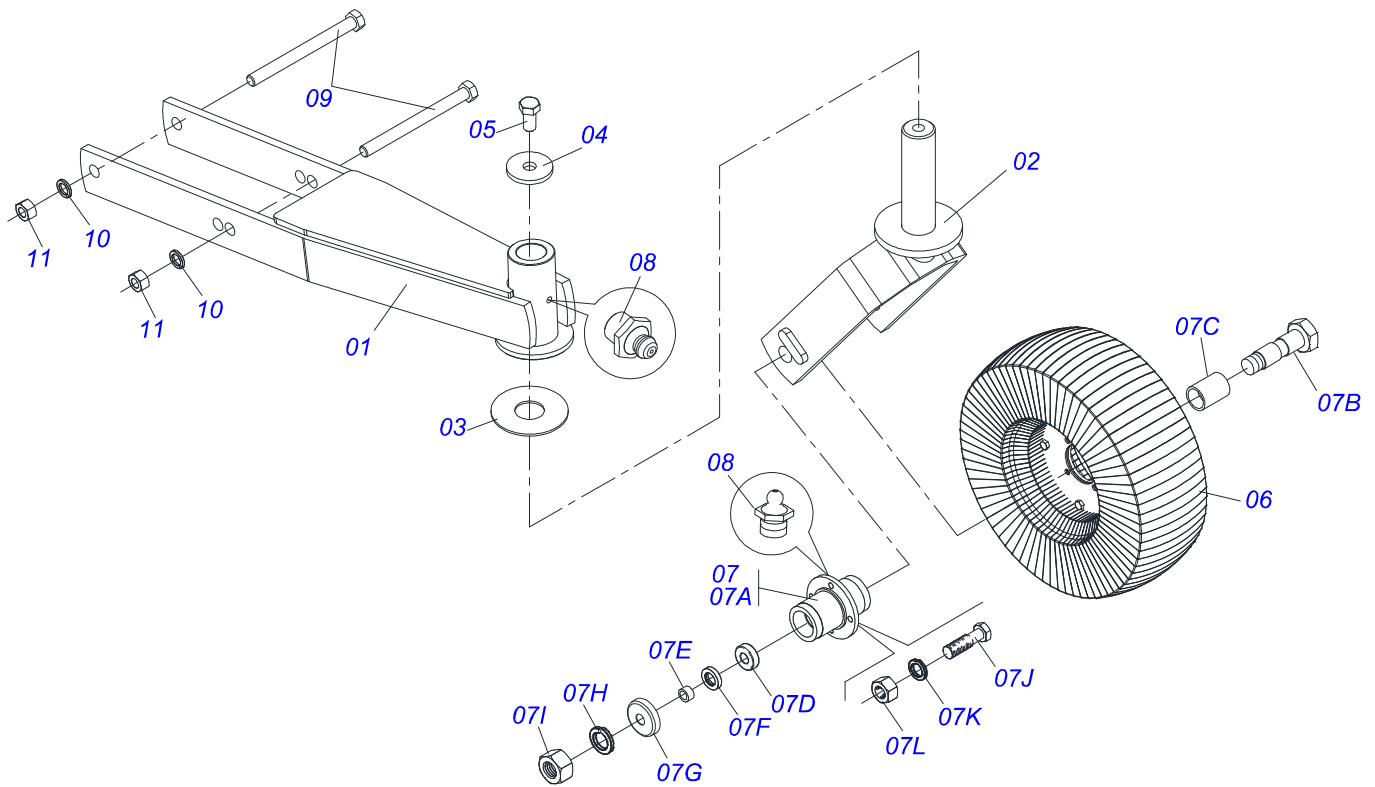
| Item | Code | Description | See page | QT |
|------|------------|---------------------------|----------|----|
| 01 | 0503010812 | 7/8" UNF SELF LOCKING NUT | | 02 |
| 02 | 0503011447 | SPRING WASHER | | 02 |
| 03 | 0531014512 | FASTERNER ROCADORES | | 02 |
| 04 | 0531015055 | 620 FOLLOWER | | 02 |
| 05 | 0561017308 | SUPPORT UPPER BASE | | 01 |
| 06 | 0561017368 | ROTARY LOWER SUPPORT | | 01 |
| 07 | 0561017309 | ROTARY SUPPORT CHOCK | | 01 |
| 08 | 0622400075 | ROTARY CUTTER | | 02 |



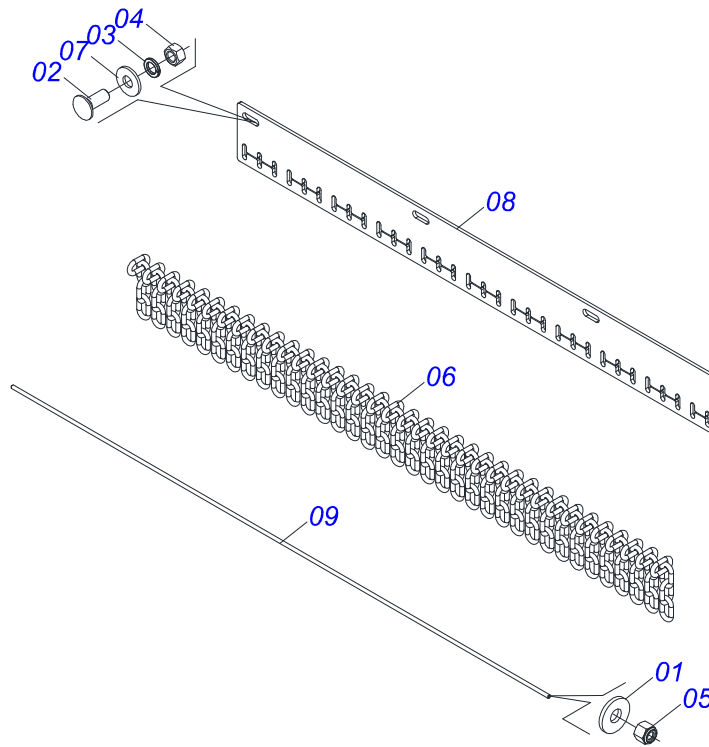
| Item | Code | Description | See page | QT |
|------|------------|---------------------------------|----------|----|
| 01 | 0502012205 | BOX MULTIPLIER | | 01 |
| 02 | 0503010750 | 30209 BALL BEARING | | 01 |
| 03 | 0503030084 | 1/2" X 1/2" X 2.0" STUD | | 14 |
| 04 | 0503060623 | CROWN PINION SET | | 01 |
| 05 | 0503014772 | 501056 CLAMPING RING (FOR AXLE) | | 01 |
| 06 | 0502012207 | COVER MULTIPLIER | | 01 |
| 07 | 0503012103 | 5301 -BSEAL | | 01 |
| 08 | 0503012418 | 32211 ROLLER BEARING | | 01 |
| 09 | 0503030783 | 7.1" X 5.3" X 0.008" JOINT | | 03 |
| 10 | 0503011440 | SPRING WASHER | | 14 |
| 11 | 0503010028 | 1/2" NUT | | 14 |
| 12 | 0503030785 | 7.9" X 5.9" X 0.008" JOINT | | 03 |
| 13 | 0503010286 | 2-355 N 3006-9B O'RING | | 01 |
| 14 | 0502012206 | LOWER HUB | | 01 |
| 15 | 0503011420 | 502100 CLAMPING RING (FOR AXLE) | | 02 |
| 16 | 0531018823 | FLAT WASHER | | 01 |
| 17 | 0503012311 | 501065 RENO RING | | 01 |
| 18 | 0531019302 | LOCK RING | | 01 |
| 19 | 0503013211 | 6016 BRG SEAL | | 01 |
| 20 | 0503013201 | ARCA 6016 BRG SEAL | | 01 |
| 21 | 0501110186 | OIL SMALLER LEVEL INDICATOR | | 01 |
| 22 | 0503031604 | 1/2" BSP PLUG | | 01 |
| 23 | 0551018056 | SLEEVE FLANGE BALL BEARING | | 01 |



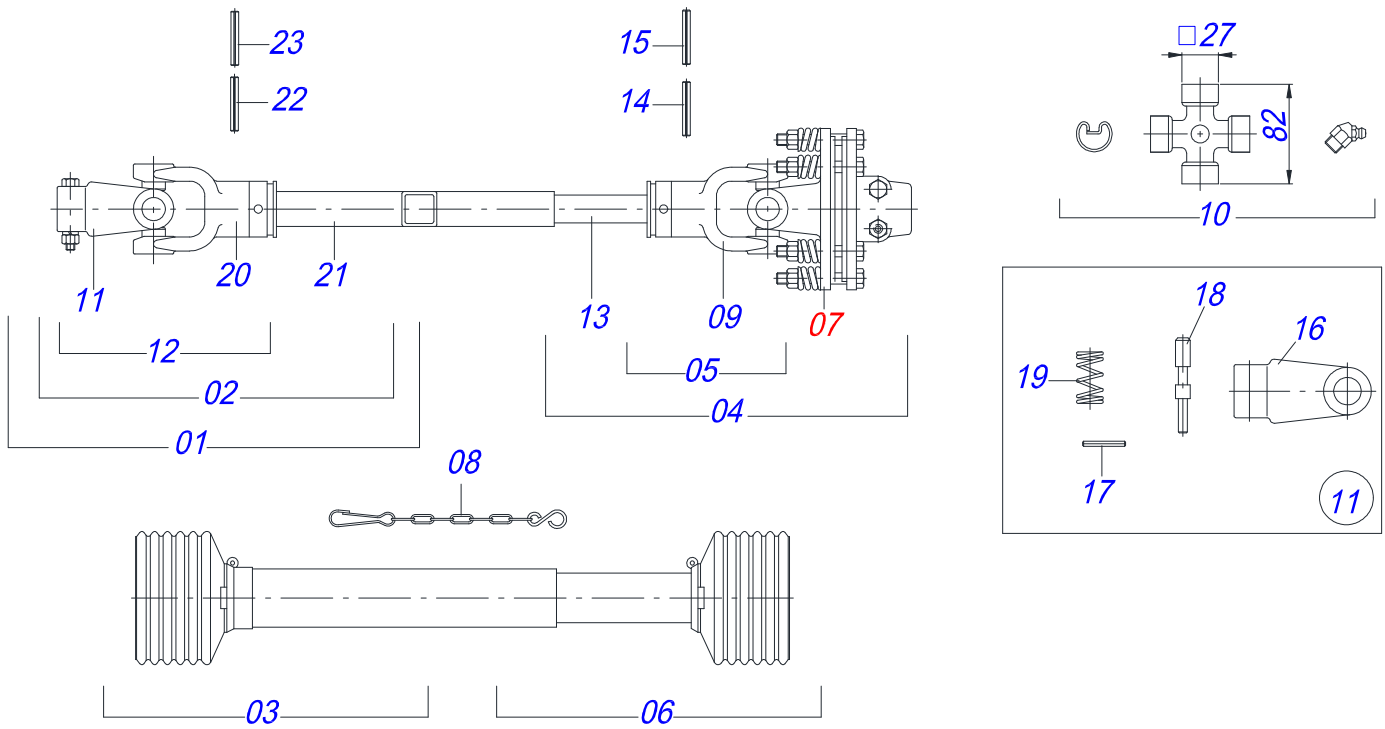
| Item | Code | Description | See page | QT |
|------|------------|---------------------------------|----------|--------|
| 01 | 0503010750 | 30209 BALL BEARING | 01 | 01 |
| 02 | 0503011443 | 3/8" SPRING WASHER | 09 | 09 |
| 03 | 0503012103 | 5301 -BSEAL | 02 | 02 |
| 04 | 0503012311 | 501065 RENO RING | 01 | 01 |
| 05 | 0503012418 | 32211 ROLLER BEARING | 03 | 03 |
| 06 | 0503013201 | ARCA 6016 BRG SEAL | 01 | 01 |
| 07 | 0503810237 | 3/8 UNC X 1 C S G.5 SA BOLT | 03 | 03 |
| 08 | 0503810751 | 3/8 UNC X 1.1/4 C S G.5 - SCREW | 06 | 06 |
| 09 | 0502012178 | DOUBLE DISTRIBUTOR BOX | 01 | 01 |
| 10 | 0502020674 | DISTRIBUTOR DOUBLE COVER | 01 | 01 |
| 11 | 0503033139 | RIGHT 15Z CONICAL GEAR | 01 | 01 |
| 12 | 0503033140 | 15Z LEFT CONICAL GEAR | 01 | 01 |
| 13 | 0503033141 | LARGER AXLE | 01 | 01 |
| 14 | 0503033142 | SMALLER AXLE S-0503 EG-1935 | 01 | 01 |
| 15 | 3402301247 | MINERAL OIL GREASE | | 2,0Lts |
| 16 | 0502020160 | COVER WITH DOUBLE DISTRIBUTOR | 01 | 01 |
| 17 | 0503010856 | OIL PLUG | 02 | 02 |
| 18 | 0531019302 | LOCK RING | 01 | 01 |
| 19 | 0551018078 | SLEEVE FLANGE BALL BEARING | 01 | 01 |
| 20 | 0503030228 | 7.1" X 5.3" X 0.008" JOINT | 02 | 02 |
| 21 | 0503030341 | 6.4" X 0.008" JOINT | 04 | 04 |



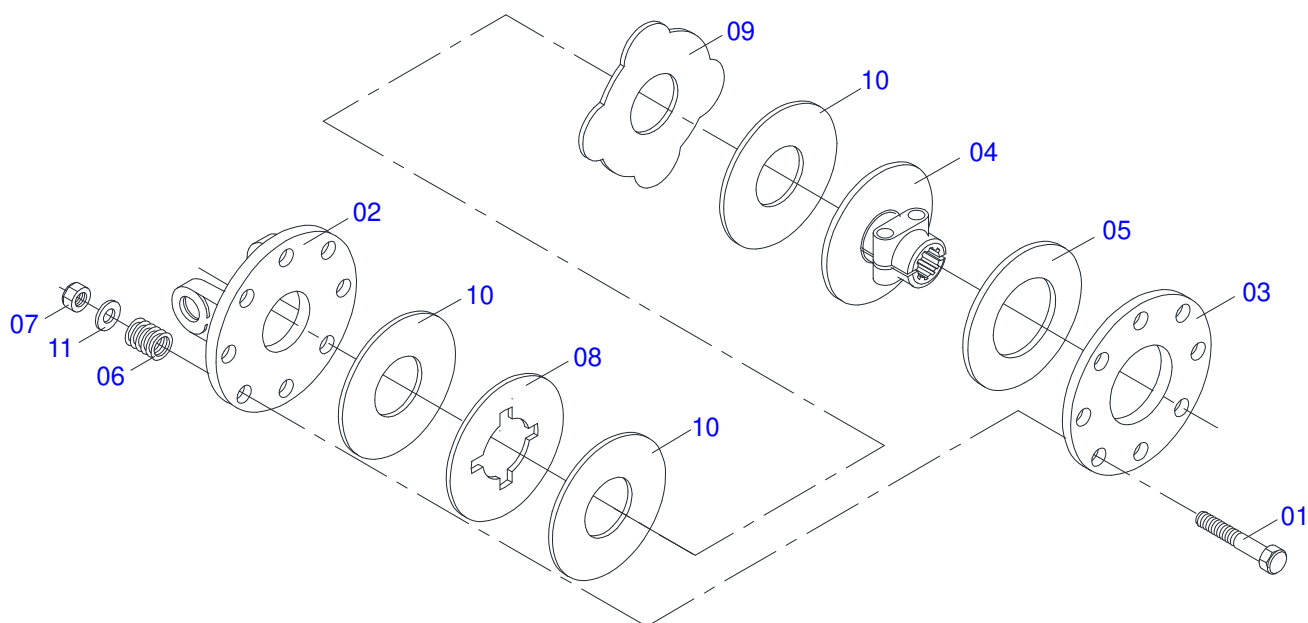
| Item | Code | Description | See page | QT |
|------|------------|---------------------------|----------|----|
| 01 | 0501069375 | WHEEL SUPPORT | | 01 |
| 02 | 0501065266 | WHELL FORK | | 01 |
| 03 | 0511013239 | FLAT WASHER | | 01 |
| 04 | 0511010721 | FLAT WASHER | | 01 |
| 05 | 0503010962 | 5/8" X 1-1/4" BOLT | | 01 |
| 06 | 0501050433 | TIRE WHELL | | 01 |
| 07 | 0501051587 | WHEELS BOX ASSY | | 01 |
| 07A | 0502011286 | WHEELS BOX ASSY | | 01 |
| 07B | 0501017143 | WHEEL AXLE | | 01 |
| 07C | 0521010460 | 0.9" X 1.1" X 2.9" SLEEVE | | 01 |
| 07D | 0503010269 | 6204 BALL BEARING | | 02 |
| 07E | 0521010487 | SPACER WASHER | | 02 |
| 07F | 0503010268 | 00262-B SEAL | | 02 |
| 07G | 0511014254 | DUST CLOAK | | 01 |
| 07H | 0503010023 | 3/4" SPRING WASHER | | 01 |
| 07I | 0503010014 | 3/4" NUT | | 04 |
| 07J | 0501010080 | 3/8" BOLT | | 04 |
| 07K | 0503010025 | 3/8" SPRING WASHER | | 04 |
| 07L | 0503010026 | 3/8" NUT | | 02 |
| 08 | 0503010002 | 1800 GREASE FITTING | | 01 |
| 09 | 0503010795 | 5/8" X 7" BOLT | | 02 |
| 10 | 0503010027 | 5/8" SPRING WASHER | | 02 |
| 11 | 0503010013 | 5/8" NUT | | 02 |



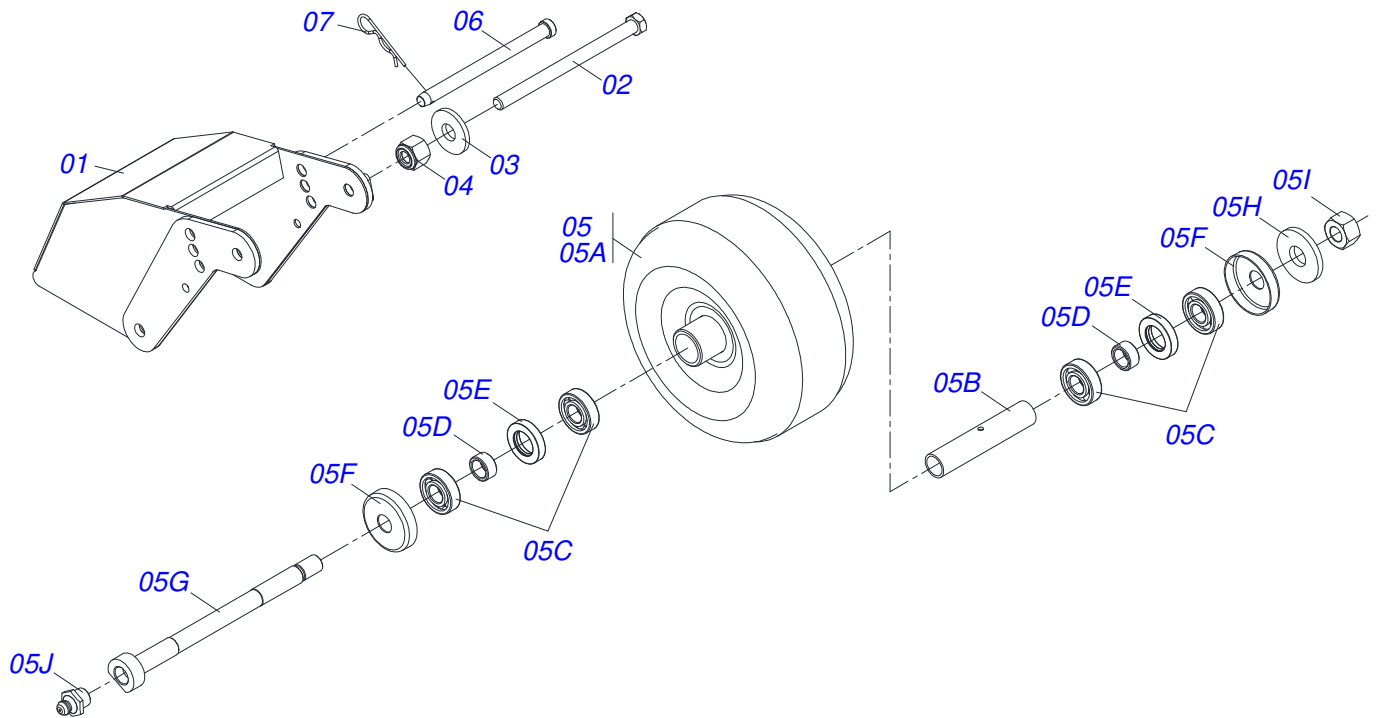
| Item | Code | Description | See page | QT |
|------|------------|----------------------------------|----------|----|
| 01 | 0501010984 | FLAT WASHER 10,50 X 27 X 3,00 ZN | | 02 |
| 02 | 0501011600 | 1/2" X 1-1/4" BOLT | | 04 |
| 03 | 0503010019 | 1/2" SPRING WASHER | | 04 |
| 04 | 0503012682 | 1/2" BSW NUT | | 04 |
| 05 | 0503013759 | NUT | | 02 |
| 06 | 0511011774 | 8,00 CHAIN 4 LINK | | 36 |
| 07 | 0511017302 | FLAT WASHER | | 04 |
| 08 | 0591010768 | BODY FRONT CURRENT PROTECTION | | 01 |
| 09 | 0591010769 | CURRENT PROTECTION ROD | | 01 |



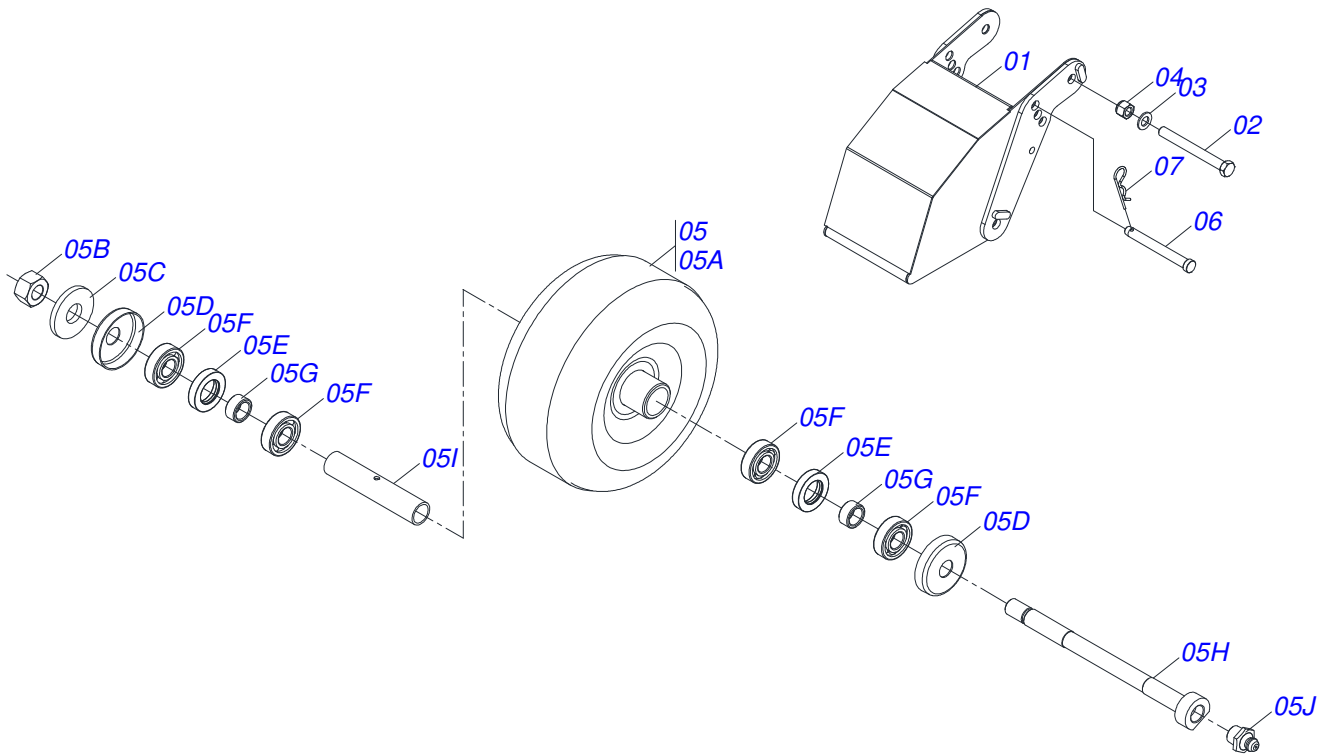
| Item | Code | Description | See page | QT |
|------|------------|--------------------------------------|----------|----|
| 01 | 0501056228 | PROT/SLEEVE UNIVERSAL JOINT | | 01 |
| 02 | 0501056227 | UNIVERSAL JOINT WITH SLEEVE | | 01 |
| 03 | 0503013619 | PROTECTION FOR UNIV JOINT AND SLEEVE | | 01 |
| 04 | 0501056229 | UNIVERSAL JOINT WITH AXLE/PROT | | 01 |
| 05 | 0501056226 | UNIVERSAL JOINT WITH SHAFT | | 01 |
| 06 | 0503013620 | PROTECTION FOR UNIV JOINT AND AXLE | | 01 |
| 07 | 0501056010 | FRICITION CLUTCH | 10 | 01 |
| 08 | 0503012023 | CHAIN FOR PROTECTION | | 02 |
| 09 | 0502010571 | 3-60 TERMINAL W/ SH 1.43"/1.43" | | 02 |
| 10 | 0503010837 | CARDAN CROSSPIECE | | 01 |
| 11 | 0501056223 | TERM 1-60 C/CANAL CC50 | | 01 |
| 12 | 0501056225 | UNIVERSAL JOINT | | 01 |
| 13 | 0541016743 | 36,51 X 800 SQUARE SHAFT | | 01 |
| 14 | 0503011069 | 0.4" X 2.8" SPRING PIN | | 01 |
| 15 | 0503011805 | 0.2" X 2.8" SPRING PIN | | 01 |
| 16 | 0502011421 | 1-60 TERMINAL | | 01 |
| 17 | 0503010838 | 0.1" X 0.8" SPRING PIN | | 01 |
| 18 | 0521010638 | 0.5" X 3.3" QUIC HITCH COUPL SHAFT | | 01 |
| 19 | 0503030518 | 0.5"X1.0"X 0.1" COMPRESSION SPRING | | 01 |
| 20 | 0502010570 | 2-60 TERMINAL W/ SH 1.8"/1.8" | | 01 |
| 21 | 0541016742 | 45,3 X Q37,2 SQUARE SLEEVE | | 01 |
| 22 | 0503010843 | 0.4" X 3.3" SPRING PIN | | 01 |
| 23 | 0503011878 | 0.2" X 3.3" SPRING PIN | | 01 |



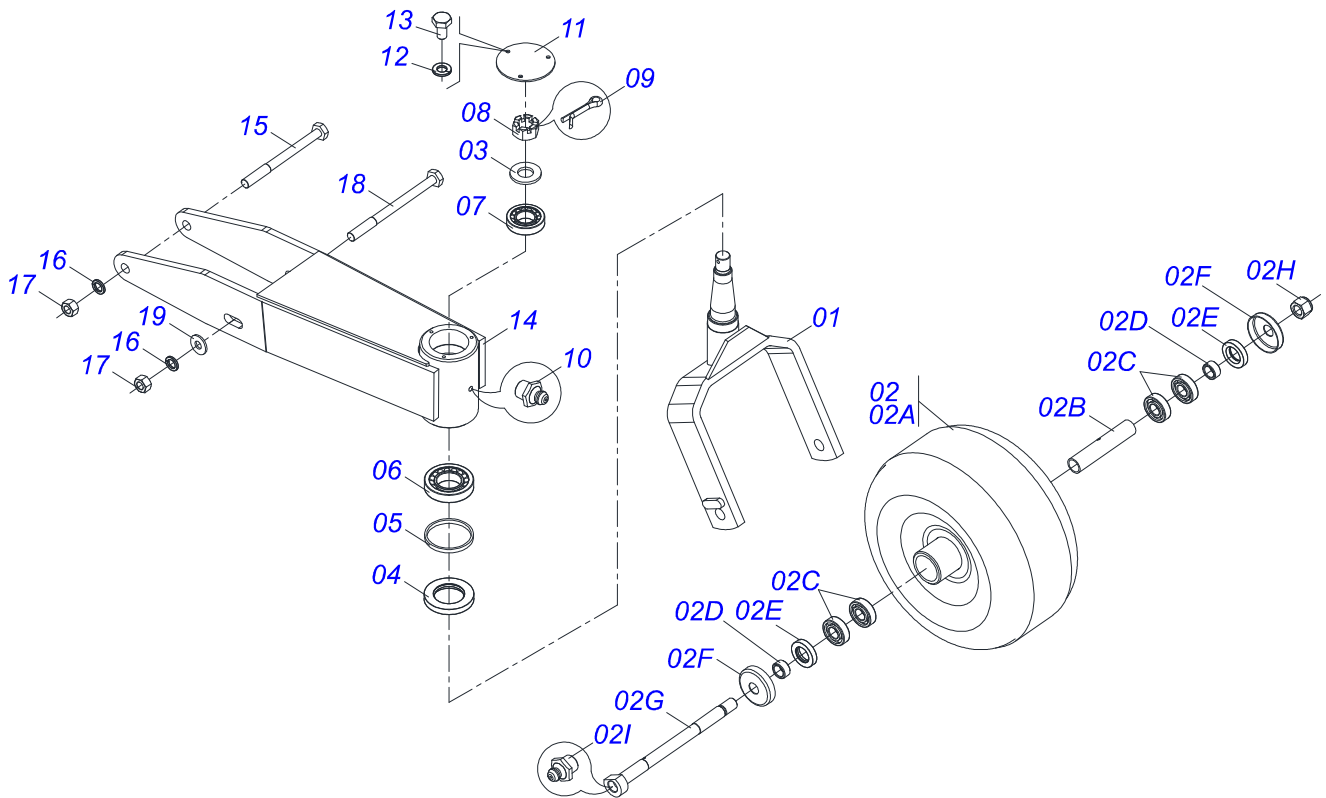
| Item | Code | Description | See page | QT |
|------|------------|-------------------|----------|----|
| 01 | 0503013564 | FRICION BOLT | 08 | |
| 02 | 0503013554 | FLANGE | 01 | |
| 03 | 0503013557 | COUPLING DISC | 01 | |
| 04 | 0503013556 | CENTRAL CORE | 01 | |
| 05 | 0503013555 | FRICION DISC | 01 | |
| 06 | 0503013558 | FRICION SPRING | 08 | |
| 07 | 0503013559 | FRICION NUT | 08 | |
| 08 | 0503013561 | NOTCHED DISC | 01 | |
| 09 | 0503013560 | INTERMEDIATE DISC | 01 | |
| 10 | 0503013562 | FRICION DISC | 03 | |
| 11 | 0503013563 | FRICION WASHER | 08 | |



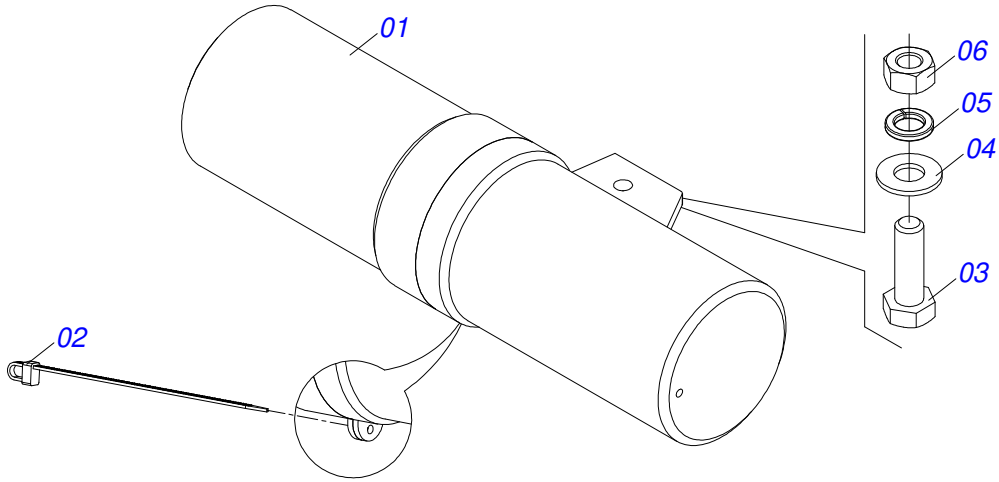
| Item | Code | Description | See page | QT |
|------|------------|---------------------------|----------|------|
| 01 | 0521061648 | COVER FRONT WHEEL SUPPORT | | 01 |
| 02 | 0503012951 | 3/4" X 10-1/2" BOLT | | 01 |
| 03 | 0501010941 | FLAT WASHER | | 01 |
| 04 | 0503011075 | 3/4" UNC NUT | | 01 |
| 05 | 0501053885 | ARM REAR WHELL | | 01 |
| 05A | 0511063509 | 14" X 8" WHELL | | 01 |
| 05B | 0531014502 | 0.9" X 1.1" X 6.3" SLEEVE | | 01 |
| 05C | 0503010269 | 6204 BALL BEARING | | 04 |
| 05D | 0521010487 | SPACER WASHER | | 02 |
| 05E | 0503010268 | 00262-B SEAL | | 02 |
| 05F | 0511014254 | DUST CLOAK | | 02 |
| 05G | 0551011854 | REAR CARRYING WHEELS AXLE | | 01 |
| 05H | 0501010941 | FLAT WASHER | | 01 |
| 05I | 0503011075 | 3/4" UNC NUT | | 01 |
| 05J | 0503010002 | 1800 GREASE FITTING | | 01 |
| 06 | 0541018559 | REAR WHELL CONTROL AXLE | | 01 |
| 07 | 0503030012 | HITCH PIN CLIP | | 01 |
| 08 | 1882970002 | GREASE SOAP | | 01Kg |



| Item | Code | Description | See page | QT |
|------|------------|---------------------------|----------|----|
| 01 | 0511067120 | COVER FRONT WHEEL SUPPORT | 01 | 01 |
| 02 | 0503012951 | 3/4" X 10-1/2" BOLT | 01 | 01 |
| 03 | 0501010941 | FLAT WASHER | 01 | 01 |
| 04 | 0503011075 | 3/4" UNC NUT | 01 | 01 |
| 05 | 0501053885 | ARM REAR WHELL | 01 | 01 |
| 05A | 0511063509 | 14" X 8" WHELL | 01 | 01 |
| 05B | 0503011075 | 3/4" UNC NUT | 01 | 01 |
| 05C | 0501010941 | FLAT WASHER | 01 | 01 |
| 05D | 0511014254 | DUST CLOAK | 02 | 02 |
| 05E | 0503010268 | 00262-B SEAL | 02 | 02 |
| 05F | 0503010269 | 6204 BALL BEARING | 04 | 04 |
| 05G | 0521010487 | SPACER WASHER | 02 | 02 |
| 05H | 0551011854 | REAR CARRYING WHEELS AXLE | 01 | 01 |
| 05I | 0531014502 | 0.9" X 1.1" X 6.3" SLEEVE | 01 | 01 |
| 05J | 0503010002 | 1800 GREASE FITTING | 01 | 01 |
| 06 | 0541018559 | REAR WHELL CONTROL AXLE | 01 | 01 |
| 07 | 0503030012 | HITCH PIN CLIP | 01 | 01 |



| Item | Code | Description | See page | QT |
|------|------------|---------------------------|----------|----|
| 01 | 0511067159 | REAR WHEELS FORK | | 01 |
| 02 | 0501057218 | ARM REAR WHELL | | 01 |
| 02A | 0511063509 | 14" X 8" WHELL | | 01 |
| 02B | 0531014502 | 0.9" X 1.1" X 6.3" SLEEVE | | 01 |
| 02C | 0503010269 | 6204 BALL BEARING | | 04 |
| 02D | 0521010487 | SPACER WASHER | | 02 |
| 02E | 0503010268 | 00262-B SEAL | | 02 |
| 02F | 0511014254 | DUST CLOAK | | 02 |
| 02G | 0551011854 | REAR CARRYING WHEELS AXLE | | 01 |
| 02H | 0503011075 | 3/4" UNC NUT | | 01 |
| 02I | 0503010002 | 1800 GREASE FITTING | | 01 |
| 03 | 0511015994 | FLAT WASHER | | 01 |
| 04 | 0503010279 | SEAL | | 01 |
| 05 | 0541018986 | WASHER | | 01 |
| 06 | 0503010360 | 30208 ROLLER BEARING | | 01 |
| 07 | 0503011290 | 30206 BALL BEARING | | 01 |
| 08 | 0503030009 | 1" CASTLE NUT | | 01 |
| 09 | 0503010523 | 1/4" X 2" COTTERPIN | | 01 |
| 10 | 0503010002 | 1800 GREASE FITTING | | 01 |
| 11 | 0541018995 | WHEEL BOX COVER | | 01 |
| 12 | 0503011441 | SPRING WASHER | | 03 |
| 13 | 0503013758 | 1/4" X 1-1/2" BOLT | | 03 |
| 14 | 0511067801 | REAR WHEEL SUPPORT | | 01 |
| 15 | 0503010795 | 5/8" X 7" BOLT | | 01 |
| 16 | 0503011445 | SPRING WASHER | | 02 |
| 17 | 0503010013 | 5/8" NUT | | 02 |
| 18 | 0503012410 | 5/8" X 7.1/2" BOLT | | 01 |
| 19 | 0501012140 | FLAT WASHER | | 01 |



| Item | Code | Description | See page | QT |
|------|------------|--------------------------------|----------|----|
| 01 | 0503060100 | OPERATOR'S MANUAL STORAGE TUBE | | 01 |
| 02 | 0503010267 | NYLON CLAMP | | 01 |
| 03 | 0503010363 | 5/16" X 1" BOLT | | 01 |
| 04 | 0501010694 | FLAT WASHER | | 01 |
| 05 | 0503010179 | LOCK WASHER | | 01 |
| 06 | 0503010337 | 5/16" NUT | | 01 |



civemasa

Technical Publications | Elaboration and Revision
ALESSANDRA PATRICIA KAWAHARA CARRILI

www.civemasa.com.br

