

DISK HARROWS

GDF 64/68/72D - PA

Code: 0501091600
Series: S-1014
Revision: 00
Revision Date: FEVEREIRO/2023

PARTS CATALOGUE

CIVEMASA




PRODUCTS

Code	Description
0121110055	GDF 64 X 22 X 3,50 DM PA S-1014
0121110054	GDF 64 X 22 X 4,50 DM PA S-1014
0121110056	GDF 68 X 22 X 3,50 DM PA S-1014
0121110057	GDF 72 X 22 X 3,50 CM PA S-1014
0121110058	GDF 72 X 22 X 3,50 DM PA S-1014
0121110059	GDF 72 X 22 X 4,50 DM PA S-1014

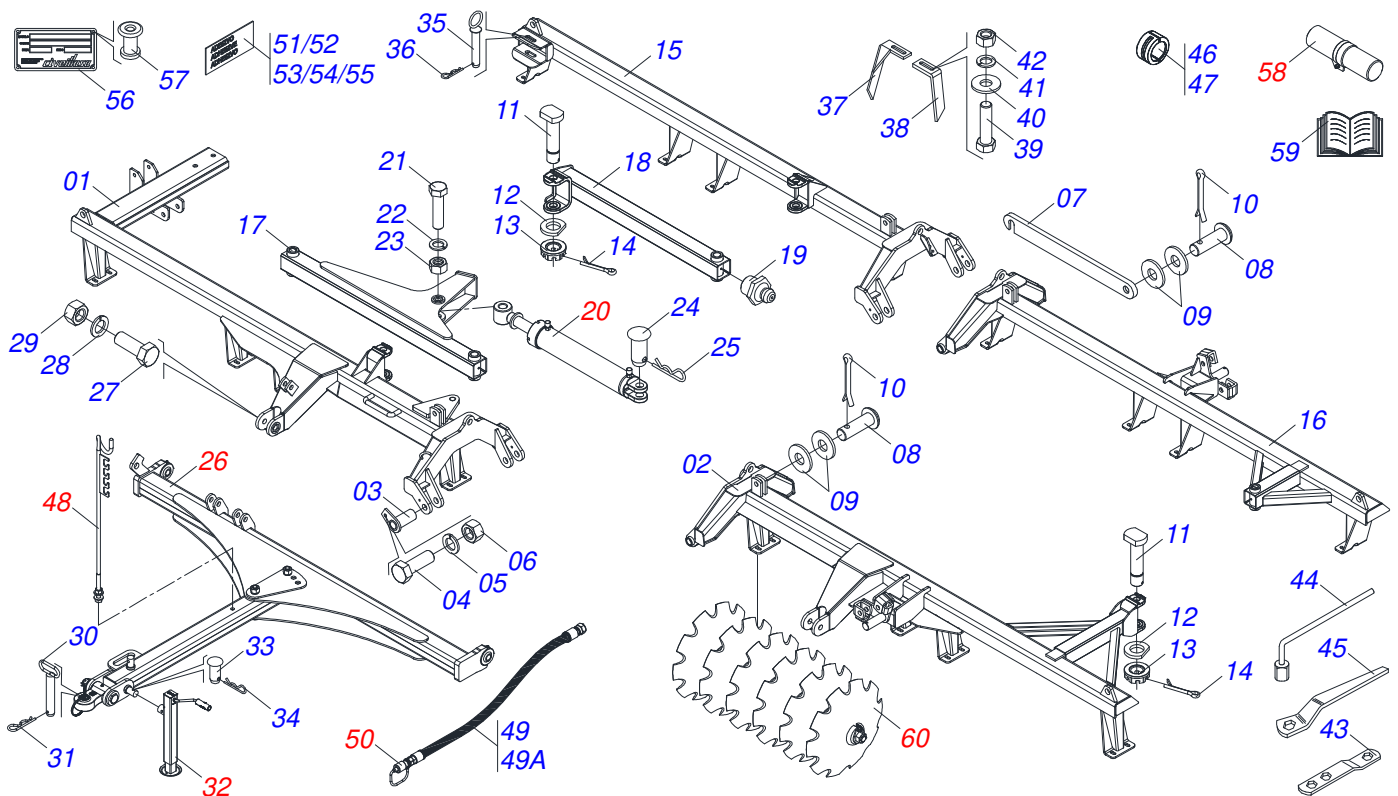
ATTENTION: IMPORTANT

CIVEMASA reserves the right to improve and/or modify the technical features of its products, without obligation to do the same with those products already sold and without prior knowledge of the dealer or the customer. The photos are only illustrative.



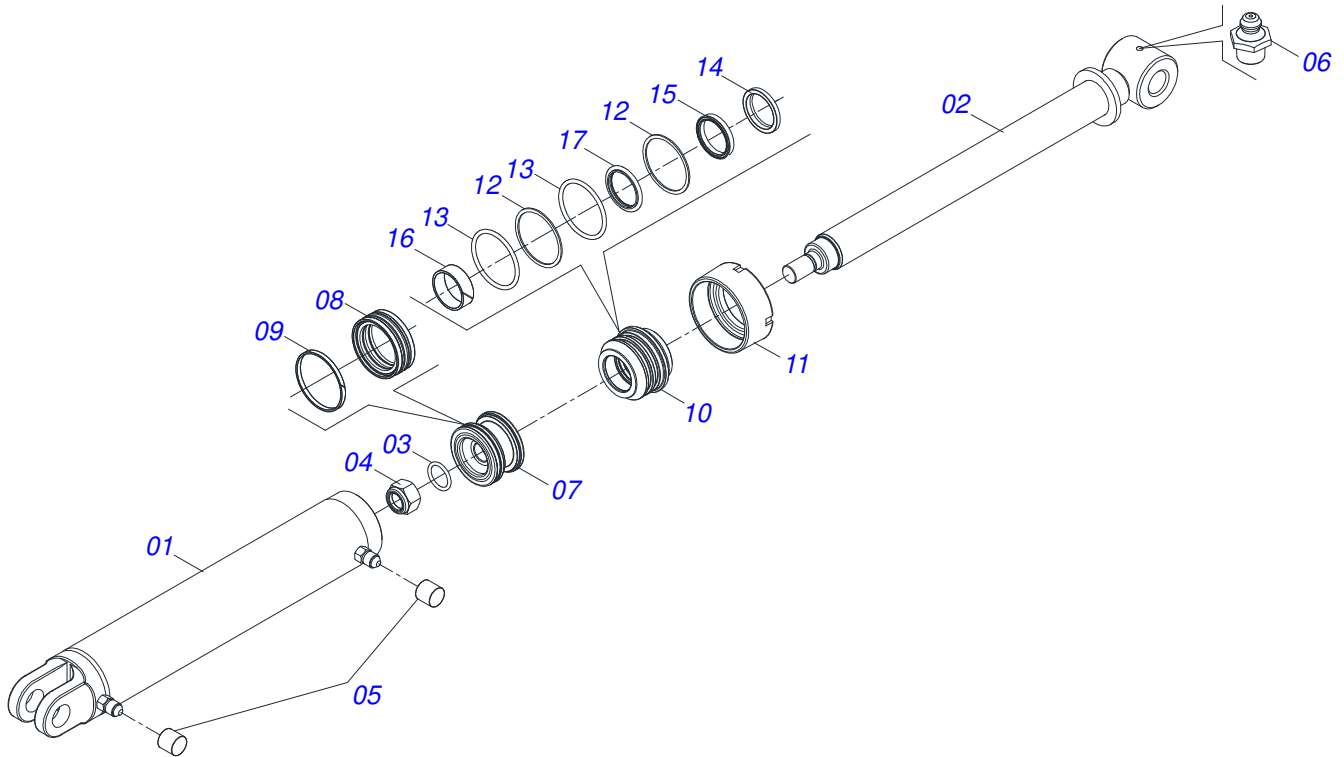
INDEX

0909091130	ASSY FRAME 64/68/72D - P.A	1
0511058461	HYDRAULIC CYLINDER	2
0521044870	DRAWBAR ASSY	3
0521048502	ASSY TRACTION BAR	4
0521057520	HITCH ASSY	5
0503062157	DRAWBAR JACK	6
0501040257	3/4 X 1200 HOSE HOLDER A	7
0501053834	MALE QUICK COUPLER	8
0521053417	MANUAL DOOR ASSY INSTRUCTION	9
0909091132	GANG DISC ASSY GDF 64/68/72D - PA	10
0501047045	BEARING	11
0501047055	BEARING	13

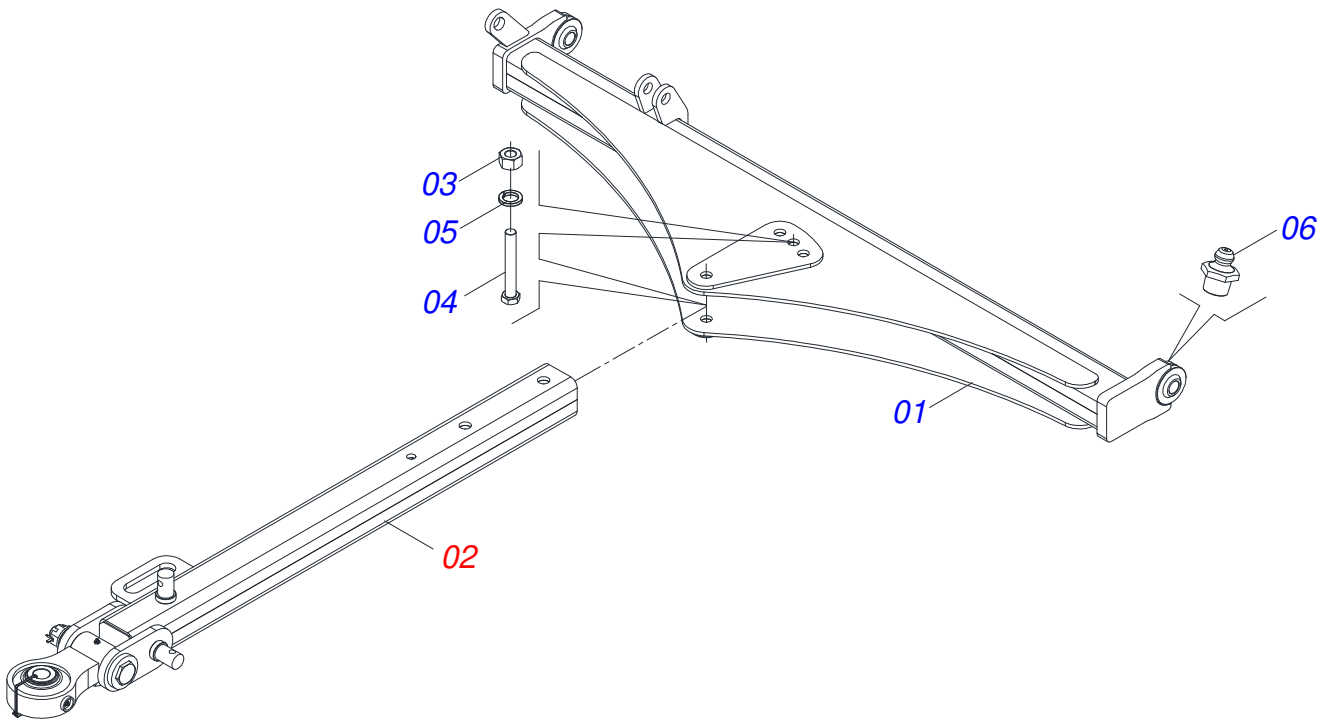


Item	Code	Description	See page	64	68	72
01	0521065464	FRONT FRAME - 64D		01	00	00
01.	0521065467	FRONT FRAME - 68D		00	01	00
01..	0521065472	FRONT FRAME - 72D		00	00	01
02	0521065462	LEFT FRONT FRAME - 64D		01	00	00
02.	0521065468	FRONT FRAME - 68D		00	01	00
02..	0521065473	LEFT FRONT FRAME - 72D		00	00	01
03	0501063751	1.5" X 5.5" PIVOT SHAFT		04	04	04
04	0501010100	SCREW 5/8 UNC X 2 CS G.5 ZN		04	04	04
05	0501012140	FLAT WASHER		04	04	04
06	0503010013	5/8 NUT		04	04	04
07	0501018941	TRANSPORT LOCK		02	02	02
08	0521010592	1.1" X 3.1" COUPLING SHAFT		04	04	04
09	0511017480	FLAT WASHER		08	08	08
10	0503010571	1/4" X 1.1/2 COTTERPIN		06	06	06
11	0531019497	1.5" X 9.2" ARTICULATED AXIS		04	04	04
12	0531019540	FLAT WASHER		04	04	04
13	0501011301	1.1/2 UNC 6FPP 2.5/16 NUT		04	04	04
14	0503010010	1/4" X 2.1/2" COTTERPIN		04	04	04
15	0521065465	RIGHT REAR FRAME - 64D		01	00	00
15.	0521065469	RIGHT REAR FRAME - 68D		00	01	00
15..	0521065471	RIGHT REAR FRAME - 72D		00	00	01
16	0521065463	LEFT REAR FRAME - 64D		01	00	00
16.	0521065470	LEFT REAR FRAME - 68D		00	01	00
16..	0521065466	LEFT REAR FRAME - 72D		00	00	01
17	0521065407	FRONT STABILIZER BAR		01	01	01
18	0521065406	REAR STABILIZER BAR		01	01	01
19	0503010002	1800 GREASE FITTING		04	04	04
20	0511058461	HYDRAULIC CYLINDER	2	01	01	01
21	0501011106	1-1/4" X 7" SCREW		01	01	01
22	0503010070	SPRING WASHER		01	01	01
23	0501010087	1.1/4" NUT		01	01	01

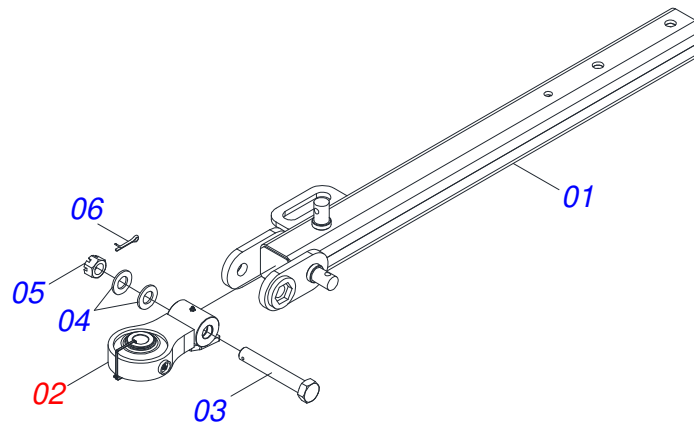
Item	Code	Description	See page	64	68	72
24	0521012538	1.2" X 3.5" COUPLING SHAFT		01	01	01
25	0503010523	1/4" X 2" COTTERPIN		01	01	01
26	0521044870	DRAWBAR ASSY	3	01	01	01
27	0501010426	1-1/4" X 6" SCREW		02	02	02
28	0503010070	SPRING WASHER		02	02	02
29	0501010087	1.1/4" NUT		02	02	02
30	0501069080	COUPLING SHAFT		01	01	01
31	0503031035	HITCH PIN CLIP		01	01	01
32	0503062157	DRAWBAR JACK	6	01	01	01
33	0521010549	COUPLING SHAFT		01	01	01
34	0503030168	HITCH PIN CLIP		01	01	01
35	0521064090	COUPLING SHAFT		01	01	01
36	0503030012	HITCH PIN CLIP		01	01	01
37	0501063963	FRONT SCRAPER		24	26	28
38	0501063962	REAR SCRAPER		24	26	28
39	0503011082	C1/2" X 1.3/4" SCREW		96	104	112
40	0511017302	FLAT WASHER 13,50 X 32,50 X 3,0 ZN		96	104	112
41	0503010019	1/2" SPRING WASHER		96	104	112
42	0503010060	1/2 UNC G.5 ZN HEX NUT		96	104	112
43	0501011432	1-1/2" AND 1-5/8 GANG BOLT WRENCH		02	02	02
44	0501061617	1" GANG BOLT WRENCH		01	01	01
45	0501068273	5/8" WRENCH		01	01	01
46	0501047895	25 ROD STOP		02	02	02
47	0501047885	30 ROD STOP		04	04	04
47.	0501047885	30 ROD STOP		04	04	04
48	0501040257	3/4 X 1200 HOSE HOLDER A	7	01	01	01
49	0501051050	HOSE ASSY		01	01	01
49A	0501080362	3/8" X 177" TC-TM HOSE		02	02	02
50	0501053834	MALE QUICK COUPLER	8	02	02	02
51	0503033243	EMBLEM LOGO CIVEMASA 60 X 240		01	01	01
52	0503033647	APPROVED BADGE		01	01	01
53	0503031428	READ MANUAL DECAL		01	01	01
54	0503033038	DANGER SIGN		01	01	01
55	0503034065	GDF EMBLEM		01	01	01
56	0503034004	ALUMINUM IDENTIFICATION LABEL		01	01	01
57	0503010001	3.2 X 5.5 RIVET		04	04	04
58	0521053417	MANUAL DOOR ASSY INSTRUCTION	9	01	01	01
59	0511032616	BAG WITH GDF INSTRUCTION MANUAL		01	01	01
60	0909091132	GANG DISC ASSY GDF 64/68/72D - PA	10	01	01	04



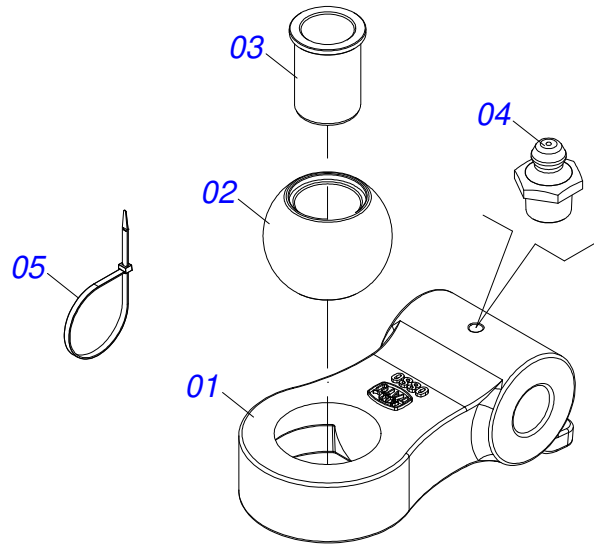
Item	Code	Description	See page	QT
01	0521063982	CYLINDER CASE		01
02	0521067533	50,80 X 697 EXTENSOR		01
03	0503010042	2-214 N 3006-9B O'RING		01
04	0503010063	1" SELF-ALIGNING NUT		01
05	0503030385	CYLINDER PLUG N-002		02
06	0503010002	1800 GREASE FITTING		01
07	0571019710	1.7" X 3.4" PISTON		01
08	0503017935	RING		01
09	0503018144	RING		01
10	0581013228	50,80 X 85,72 SUPPORT RINGS		01
11	0581013227	85,72 MOVE COVER		01
12	0503017940	8-337 BACK-UP RING		02
13	0503017939	2-337 N 3006-9B O' RING		02
14	0503010039	D-2000 SCRAPER RING		01
15	0503018026	1870-2000-375 B GASKET		01
16	0503018025	RING GUIDE		01
17	0503018024	RING BS		01



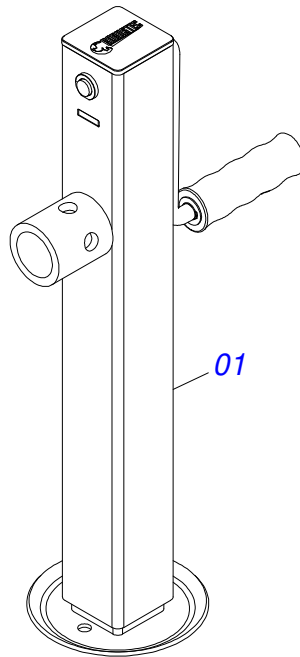
Item	Code	Description	See page	QT
01	0521065405	OFFSET BAR		01
02	0521048502	ASSY TRACTION BAR	4	01
03	0501010059	1.5/8 NUT		02
04	0501010334	1" X 7" BOLT		02
05	0503010012	1" SPRING WASHER		02
06	0503010002	1800 GREASE FITTING		02



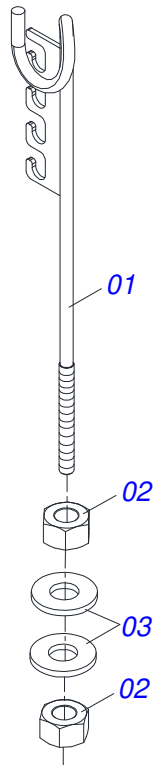
Item	Code	Description	See page	QT
01	0521069165	DRAW BAR		01
02	0521057520	HITCH ASSY	5	01
03	0581015973	1.1/4 UNC X 8 C S G5 SCREW		01
04	0501017779	32 X 60 X 4.75 FLAT WASHER		02
05	0503013026	1.1/4" CASTLE NUT		01
06	0503010010	1/4" X 2.1/2" COTTERPIN		01



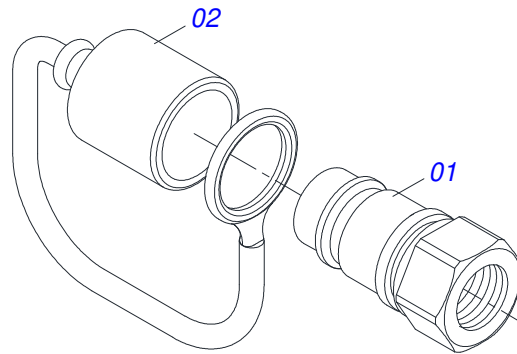
Item	Code	Description	See page	QT
01	0502040880	HITCH BODY		01
02	0502040885	BODY ATTACHMENT		01
03	0591012511	SLEEVE		01
04	0503010002	1800 GREASE FITTING		01
05	0503018829	NYLON CLAMP		01



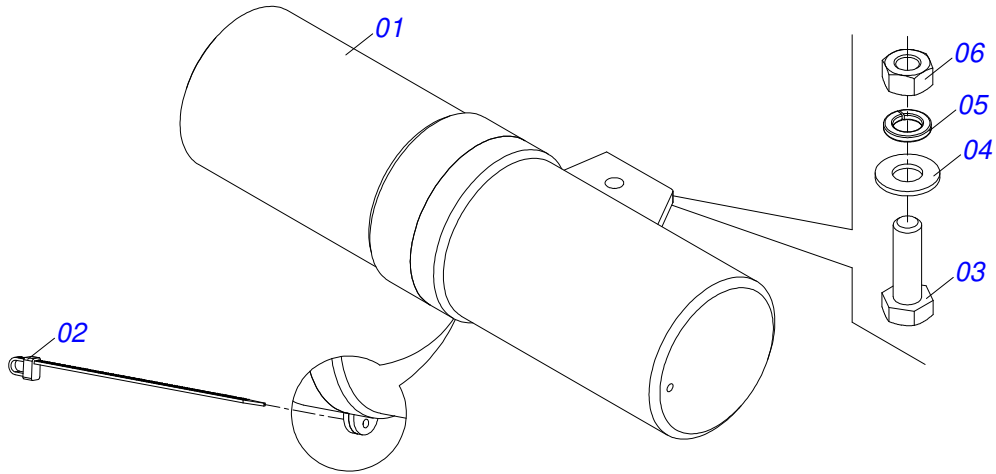
Item	Code	Description	See page	QT
01	0503062157	DRAWBAR JACK	6	01



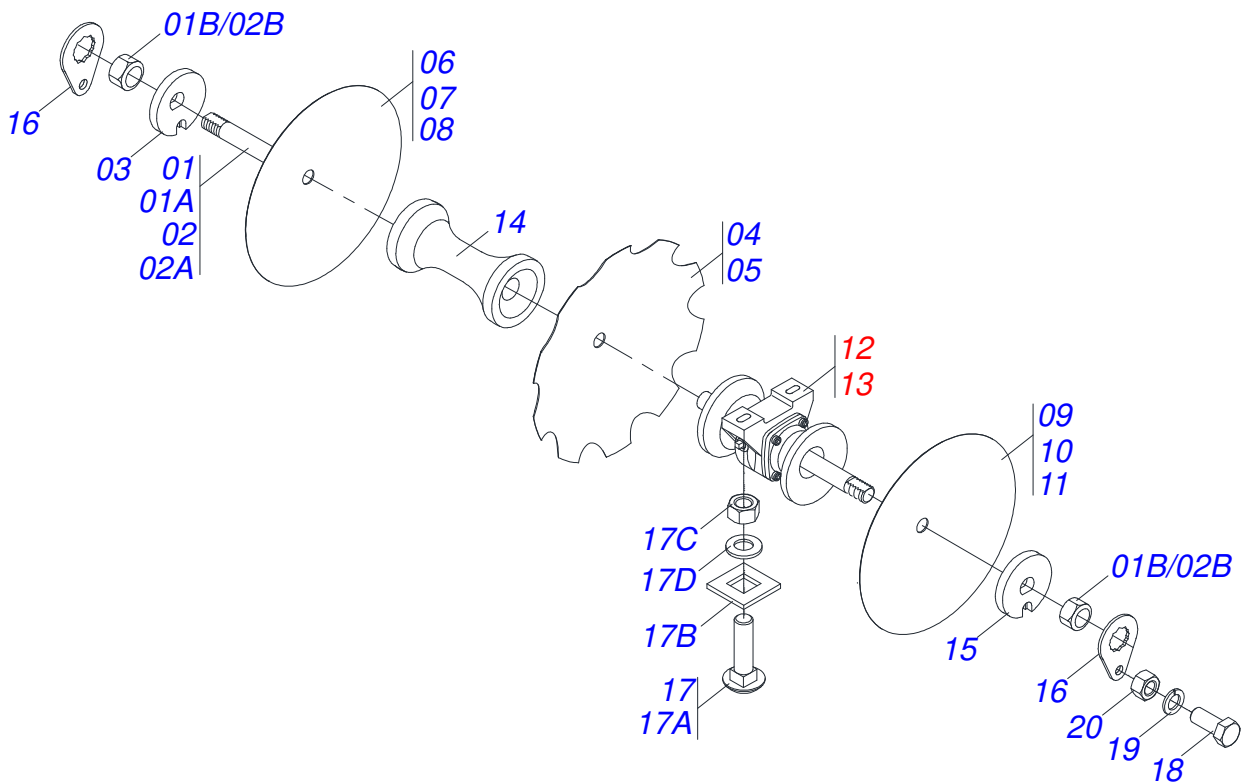
Item	Code	Description	See page	QT
01	0511067334	HOSE SUPPORT		01
02	0503010014	3/4" HEX NUT		02
03	0501010322	FLAT WASHER		02



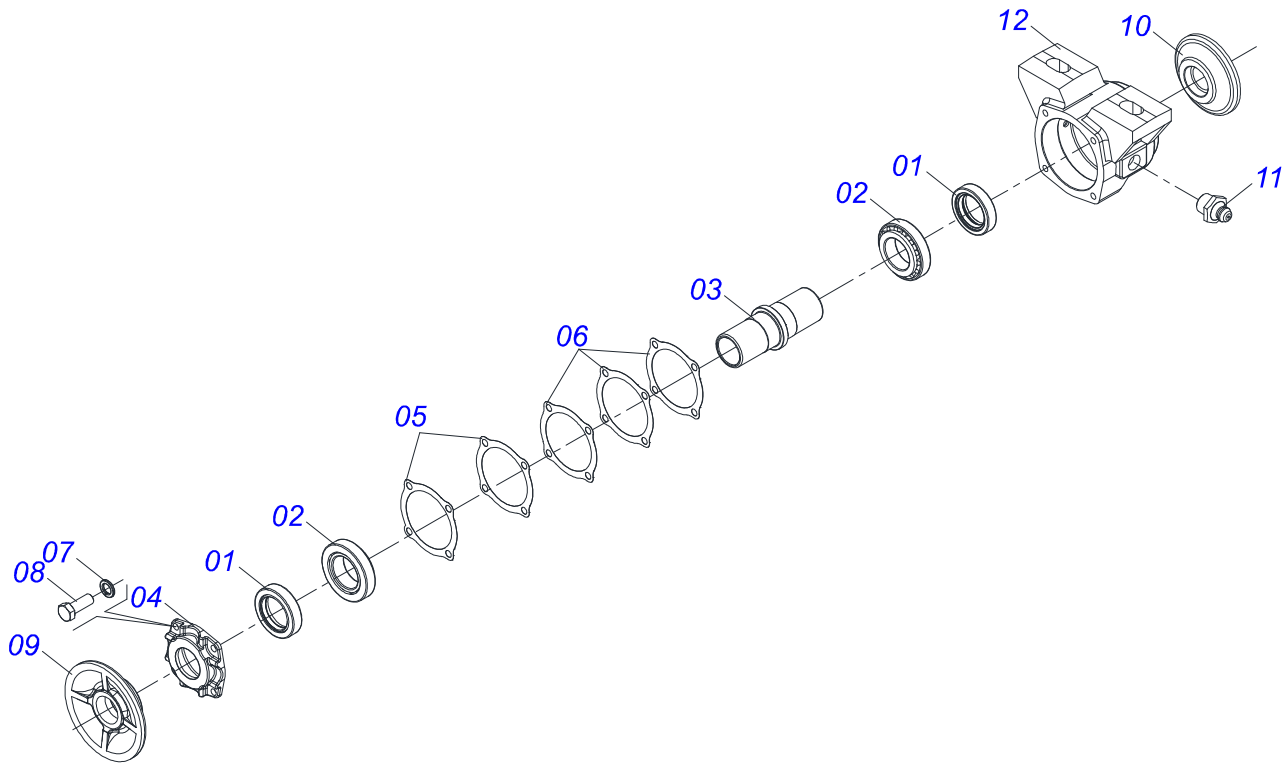
Item	Code	Description	See page	QT
01	0503011627	MALE QUICK COUPLER AGR 1/2 NPT		01
02	0503011882	MALE QUICK COUPLER CAP		01



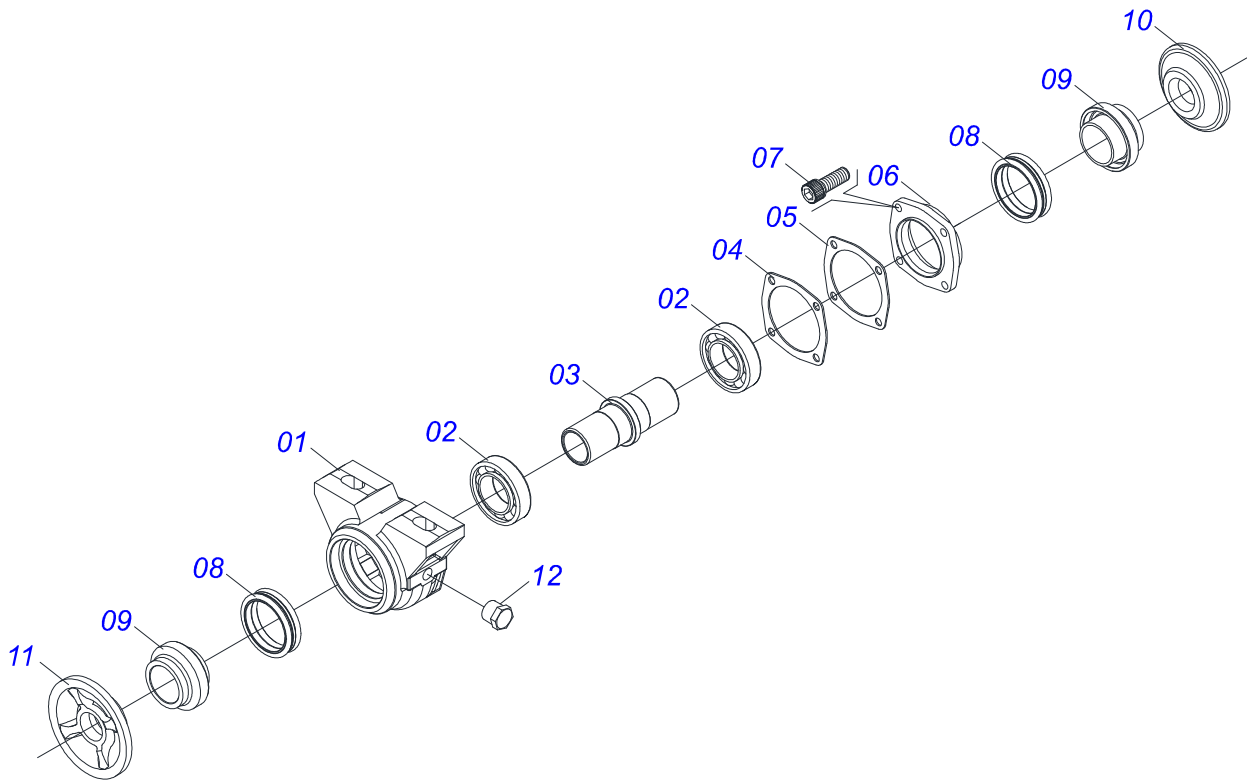
Item	Code	Description	See page	QT
01	0503060100	INSTRUCTIONS MANUAL CANISTER		01
02	0503010267	NYLON CLAMP		01
03	0503010363	BOLT 5/16 UNC X 1 C S G.2 ZN		01
04	0501010694	FLAT WASHER		01
05	0503010179	LOCK WASHER 5/16 ZN 1K01528		01
06	0503010337	5/16" NUT		01



Item	Code	Description	See page	64	68	72
01	0501043697	1.1/2 6FPP X 1505 AXLE WITH NUTS		08	04	00
01A	0511012601	1.1/2 6FPP X 1505 AXLE		08	04	00
01B	0501010110	1.1/2" NUT		18	08	00
02	0501046884	1.1/2 X 1705 AXLE W/NUT		00	04	08
02A	0501018720	1.1/2 X 1705 AXLE		00	04	08
02B	0501010110	1.1/2" NUT		00	08	16
03	0502010871	1-1/2" EXTERNAL AXLE WASHER		04	04	04
04	0602029416	DR 22 X 4,5 C64AF02FR1.9/16 10R		34	00	38
05	0602029422	DR 22 X 3,5 C64AF02FR1.9/16 10R		00	36	00
06	0601027299	DL 20 X 4,5 C57AF02FR1.9/16		32	00	36
07	0601027302	DL 20 X 3,5 C57AF02FR1.9/16		00	34	00
08	0601029413	DL 22 X 4,5 C64AF02FR1.9/16		02	00	02
09	0601029419	DL 22 X 3,5 C64AF02FR1.9/16		00	02	00
10	0601029404	DL 22 X 3,5 C64AF02FR1.9/16		00	36	38
11	0601027300	DL 20 X 3,5 C57AF02FR1.9/16		00	36	38
12	0501047055	BEARING	13	16	16	16
13	0501047045	BEARING	11	00	00	16
14	0502010627	SPACER		36	32	36
15	0502010872	1-1/2" INNER AXLE WASHER		04	04	04
16	0501018592	1.5/8" NUT LOCK		08	08	08
17	0501058802	5/8 UNC X 2.3/4 BOLT ASSY		16	16	16
17A	0503015154	5/8" X 2.3/4" BOLT		16	16	16
17B	0501010947	5/8 NUT LOCK		16	16	16
17C	0503010013	5/8 NUT		16	16	16
17D	0501012140	FLAT WASHER		16	16	16
18	0503010395	1/2" X 1-1/4" BOLT		08	08	08
19	0503010019	1/2" SPRING WASHER		08	08	08
20	0503010060	1/2 UNC G.5 ZN HEX NUT		08	08	08



Item	Code	Description	See page	QT
01	0503010468	SEAL 01199-GB		01
02	0503010006	32210 ROLLER BEARING		02
03	0502040061	AXLE		01
04	0502020273	HOUSING CAP CM		01
05	0503030684	4.4" X 3.5" X 0.004" JOINT		02
06	0503030013	4.4" X 3.5" X 0.004" JOINT		03
07	0503011443	3/8" SPRING WASHER		04
08	0503810237	3/8 UNC X 1 C S G.5 SA BOLT		04
09	0502010604	OUTER FLANGE		01
10	0502010605	INNER FLANGE		01
11	0503010002	1800 GREASE FITTING		02
12	0502020313	HOUSING CM		01



Item	Code	Description	See page	QT
01	0502010540	HOUSING DM		01
02	0503010006	32210 ROLLER BEARING		02
03	0502040061	AXLE		01
04	0503030013	4.4" X 3.5" X 0.004" JOINT		03
05	0503030684	4.4" X 3.5" X 0.004" JOINT		02
06	0502020424	HOUSING CAP		01
07	0503010134	3/8" X 1" BOLT		04
08	0503030026	SEAL LP JB-253		02
09	0502010541	SEAL RETAINER		02
10	0502010604	OUTER FLANGE		01
11	0502010605	INNER FLANGE		01
12	0503010856	OIL PLUG		02



civemasa

Technical Publications | Elaboration and Revision

MARINA PEREZ NIZA

www.civemasa.com.br

