

DISK HARROWS

GASPCRC - 14/16/18/20/22D
GASPCRC - 14/16/18/20/22D

Code: 0501091597
Series: S-1094
Revision: 00
Revision Date: FEBRUARY/2024

PARTS
CATALOGUE

CIVEMASA




PRODUCTS

Code	Working Width	Description
0121510113		GASPCRC 14 X 34 X 12,00 DM S-1094
0121510153		GASPCRC 14 X 34 X 9,00 DM S-1094
0121510045		GASPCRC 14 X 36 X 12,00 DM S-1094
0121510041		GASPCRC 16 X 36 X 12,00 DM S-1094
0121510103		GASPCRC 18 X 36 X 12,00 DM S-1094
0121510167		GASPCRC 18 X 36 X 9,00 DM S-1094
0121510036		GASPCRC 20 X 32 X 9,00 DM S-1094
0121510166		GASPCRC 20 X 36 X 9,00 DM S-1094
0121510042		GASPCRC 20 X 36 X 12,00 DM S-1094
0121510042C		GASPCRC 20 X 36 X 12,00 DM EXP S-1094
0121510028		GASPCRC 22 X 36 X 12,00 DM S-1094
0121510105		GASPCRC 22 X 36 X 9,00 DM S-1094

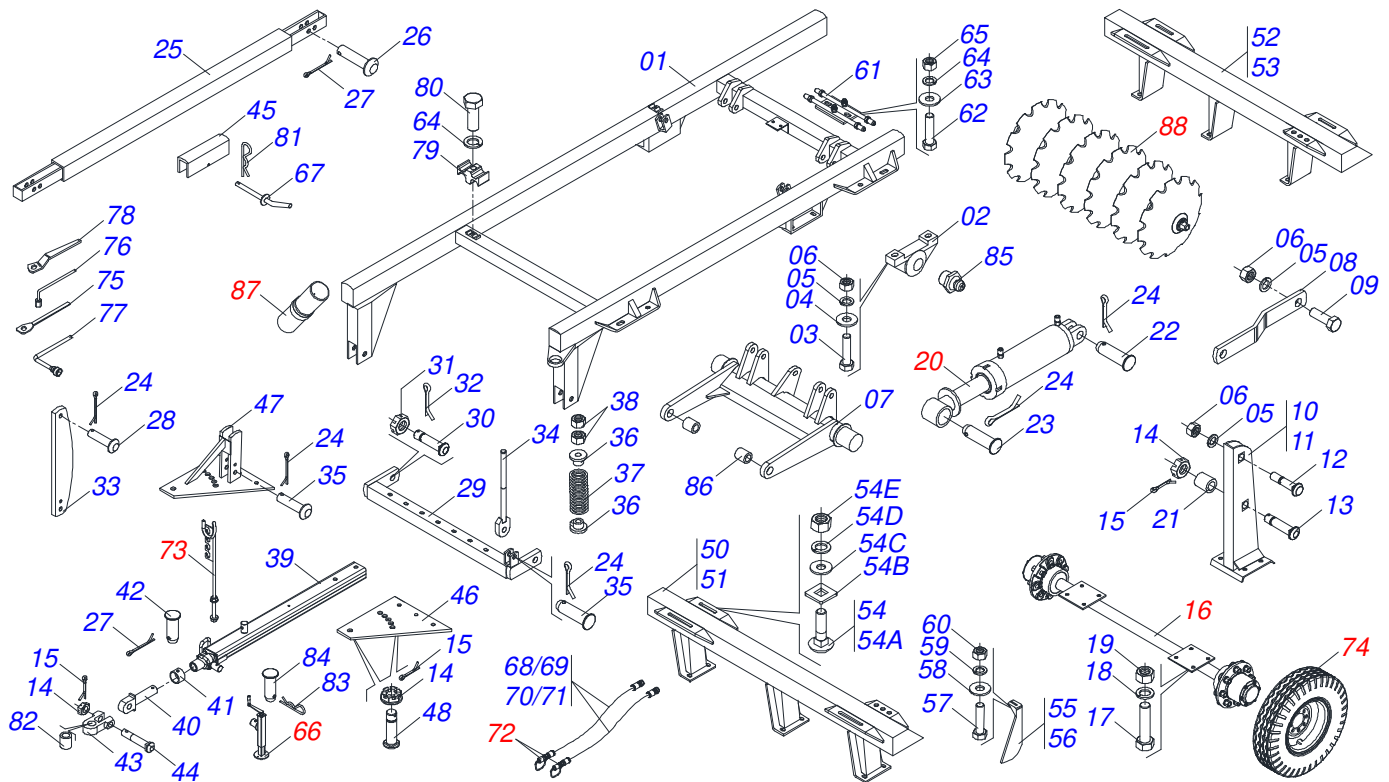
ATTENTION: IMPORTANT

CIVEMASA reserves the right to improve and/or modify the technical features of its products, without obligation to do the same with those products already sold and without prior knowledge of the dealer or the customer. The photos are only illustrative.



INDEX

0909094588	ASSY FRAME	1
0511059181	HYDRAULIC CYLINDER 50,80 X 101,60 X 515 X 248	2
0501040257	3/4" X 38" HOSE SUPPORT ASSY	3
0521052434	ASSY PORT MANUAL INSTRUCCION	4
0511048088	DRAWBAR JACK	5
0501046900	BEARING	6
0501047810	3-1/2" X 84.1" STUB SHAFT & HUB	7
0909090132	DISC SECTION - 14/16/18/20/22D	7
0503060213	WHEEL WITH TIRE 35.4" X 0.80" / 14 CANVAS	8
0501053834	MALE QUICK COUPLER	9

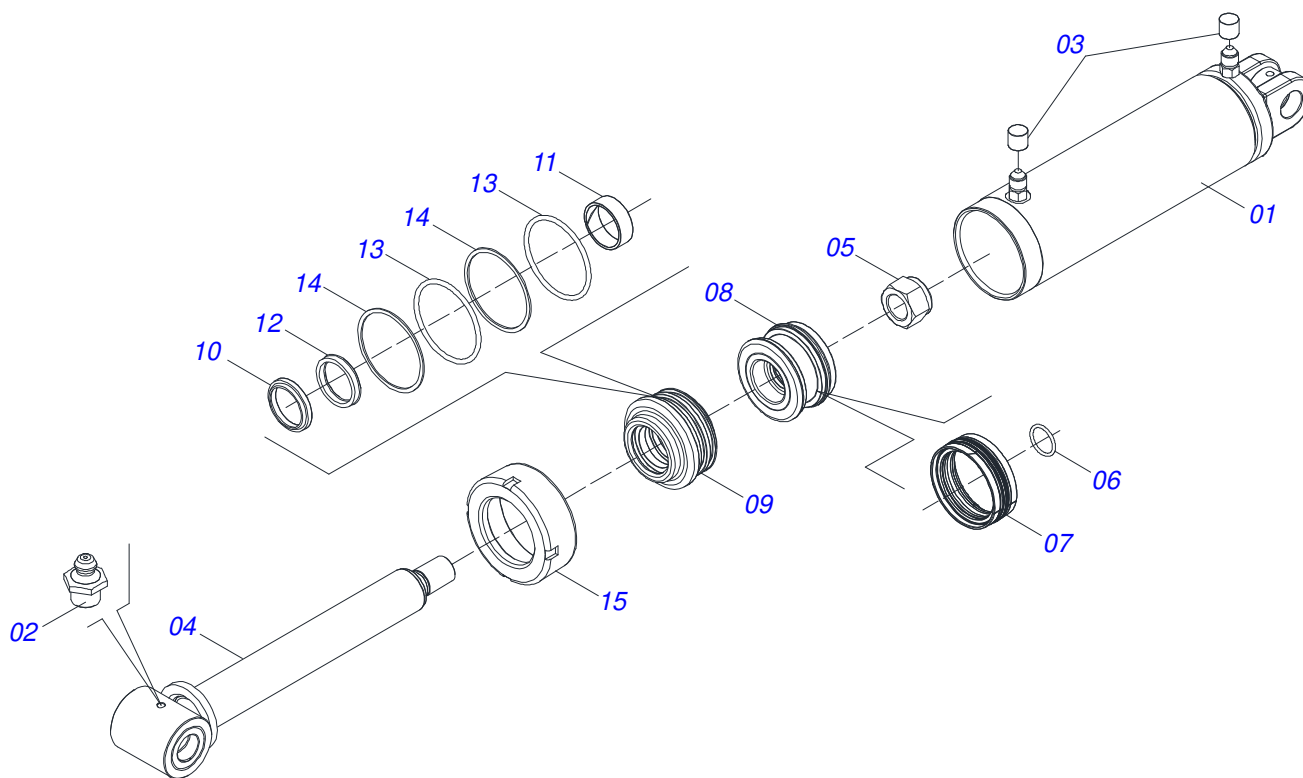


Item	Code	Description	See page	14	16	18	20	22
01	0521063924	FRAME		01	01	01	01	01
02	0502010972	ARTICULATION BEARING		02	02	02	02	02
03	0503811432	BOLT		04	04	04	04	04
04	0501810065	FLAT WASHER		04	04	04	04	04
05	0503011438	SPRING WASHER		06	06	06	06	06
06	0501810059	1" NUT		06	06	06	06	06
07	0501067244	WHEELS		01	01	01	01	01
08	0501110404	SUPPORT BAR		02	02	02	02	02
09	0503811432	BOLT		02	02	02	02	02
10	0501068260	RIGHT SUSPENSION TOWER		01	01	01	01	01
11	0501068261	LEFT SUSPENSION TOWER		01	01	01	01	01
12	0511017974	1" U BOLT SUSPENSION TOWER		02	02	02	02	02
13	0511018006	1-1/2 X 4.13" U BOLT OF SUSP TOWER		02	02	02	02	02
14	0501811301	CASTLE NUT		09	09	09	09	09
15	0503010010	SPLIT PIN 1/4" X 2.1/2"		09	09	09	09	09
16	0501047810	3-1/2" X 84.1" STUB SHAFT & HUB	7	02	02	02	02	02
17	0501810125	SCREW 3/4 UNC X 2.1/2 C S G.5		08	08	08	08	08
18	0503011442	3/4" SPRING WASHER		08	08	08	08	08
19	0503810014	3/4" NUT		08	08	08	08	08
20	0511059181	HYDRAULIC CYLINDER 50,80 X 101,60 X 515 X 248	2	02	02	02	02	02
21	0521010737	50,4/50,6X 38,5 X 35 SLEEVE		06	06	06	06	06
22	0511010174	1.2" X 5.9" COUPLING SHAFT		01	01	01	01	01
23	0521010547	1.2" X 6.5" COUPLING SHAFT		01	01	01	01	01
24	0503010523	1/4" X 2" SPLIT PIN		05	05	05	05	05
25	0501067243	STABILIZER BAR		01	01	01	01	01
26	0521010575	C0.9" X 3.3" COUPLING SHAFT		01	01	01	01	01
27	0503010571	1/4" X 1.1/2" SPLIT PIN		01	01	01	01	01
28	0521012538	1.2" X 3.5" COUPLING SHAFT		01	01	01	01	01
29	0501067241	OFFSET BAR		01	01	01	01	01
30	0521812052	PIVOT SHAFT		02	02	02	02	02
31	0501811301	CASTLE NUT		02	02	02	02	02
32	0503010010	SPLIT PIN 1/4" X 2.1/2"		02	02	02	02	02

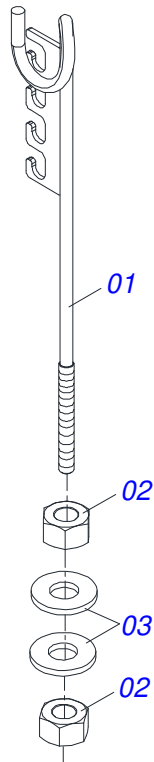
ASSY FRAME

Item	Code	Description	See page	14	16	18	20	22
33	0511016121	STABILIZER BAR TOWER		01	01	01	01	01
34	0501066362	SPRING ROD		01	01	01	01	01
35	0521010592	1.1" X 3.1" COUPLING SHAFT		01	01	01	01	01
36	0502020394	SPRING SUPPORT		02	02	02	02	02
37	0503031341	2.7 X 8 X 0.5 COMPRESSION SPRING		01	01	01	01	01
38	0501010087	1.1/4" NUT		10	10	10	10	10
39	0501069323	TRACTION BAR		01	01	01	01	01
40	0502040727	COUPLING SHAFT		01	01	01	01	01
41	0502040327	HITCH LOCK RING		01	01	01	01	01
42	0511014902	COUPLING SHAFT		01	01	01	01	01
43	0502040733	TRACTOR HITCH		01	01	01	01	01
44	0521012545	COUPLING SHAFT		01	01	01	01	01
45	0501066386	TRANSPORT LOCK 9.54"		02	02	02	02	02
46	0511016137	UPPER /LOWER PLATE		01	01	01	01	01
47	0501067250	UPPER PLATE WITH SUPPORT		01	01	01	01	01
48	0501016419	1-1/2" X 7.5" BOLT		06	06	06	06	06
49	0521010779	31.75 X 95 COUPLING SHAFT		01	01	01	01	01
50	0501060553	FRONT FRAME - 14D		01	00	00	00	00
50.	0521061961	FRONT FRAME - 16D		00	01	00	00	00
51.	0521061965	FRONT FRAME - 18D		00	00	01	00	00
51..	0521061959	FRONT FRAME - 20D		00	00	00	01	00
51...	0521061960	FRONT FRAME - 22D		00	00	00	00	01
52	0501060558	REAR FRAME - 14D		01	00	00	00	00
52.	0521063672	REAR FRAME - 16D		00	01	00	00	00
52..	0521063950	REAR FRAME - 18D		00	00	01	00	00
52...	0521063951	REAR FRAME - 20D		00	00	00	01	00
53	0501067205	REAR FRAME - 22D		00	00	00	00	01
54	0501041102	1-1/4" X 3-3/4" ASSY BOLT		08	08	08	08	08
54A	0501015348	1-1/4" X 3-3/4" BOLT		01	01	01	01	01
54B	0501010953	1-1/4" SQUARE WASHER		01	01	01	01	01
54C	0531010713	FLAT WASHER		01	01	01	01	01
54D	0503010070	SPRING WASHER		01	01	01	01	01
54E	0501010087	1.1/4" NUT		01	01	01	01	01
55	0501060423	FRONT SCRAPER		07	08	09	10	11
56	0501060424	REAR SCRAPER		07	08	09	10	11
57	0503010233	5/8" X 2-1/2" BOLT		28	32	36	40	42
58	0501012140	FLAT WASHER 16,50 X 40 X 4,00 ZN		28	32	36	40	42
59	0503010027	5/8 SPRING WASHER		28	32	36	40	42
60	0503010013	5/8 UNC G.5 ZN HEX NUT		28	32	36	40	42
61	0501068706	DOUBLE CONNECTION		01	01	01	01	01
62	0503010237	3/8" X 1" BOLT		02	02	02	02	02
63	0501010984	10,50 X 27 X 3,00 FLAT WASHER		02	02	02	02	02
64	0503010025	3/8 SPRING WASHER		02	02	02	02	02
65	0503010026	3/8" NUT		03	03	03	03	03
66	0511048088	DRAWBAR JACK	5	01	01	01	01	01
67	0501068994	8,30 X 78 LOCK PIN		02	02	02	02	02
68	0501080054	3/8" X 17" TR-TC HOSE		02	02	02	02	02
69	0501080413	3/8" X 27" TR-TC HOSE		02	02	02	02	02
70	0501080458	3/8" X 315" TC-TM HOSE		01	01	01	01	01
71	0501080459	3/8" X 322" TC-TM HOSE		01	01	01	01	01
72	0501053834	MALE QUICK COUPLER	9	02	02	02	02	02
73	0501040257	3/4" X 38" HOSE SUPPORT ASSY	3	01	01	01	01	01
74	0503060213	WHEEL WITH TIRE 35.4" X 0.80" / 14 CANVAS	8	02	02	02	02	02
75	0501316941	KEY 2.1/8 AND 2.1/2		02	02	02	02	02
76	0501061045	1" WRENCH CYLINDRICAL		01	01	01	01	01
77	0503016137	1-1/4" WRENCH CABLE CYLINDER		01	01	01	01	01
78	0501011432	1-1/2" AND 1-5/8 GANG BOLT WRENCH		01	01	01	01	01
79	0502012702	BODY SUPPORT CLAMP		03	03	03	03	03
80	0503010751	C3/8" X 1.1/4" HEX BOLT G.5		03	03	03	03	03
81	0503030168	HITCH PIN CLIP		03	03	03	03	03
82	0581010270	48 X 59.30 X 76 SLEEVE		01	01	01	01	01

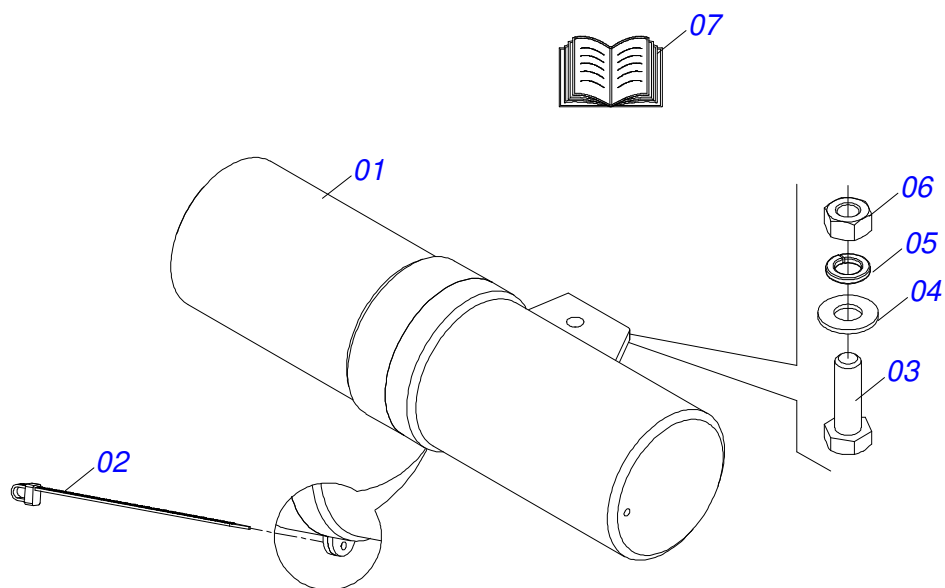
Item	Code	Description	See page	14	16	18	20	22
83	0503030168	HITCH PIN CLIP		03	03	03	03	03
84	0521010549	COUPLING SHAFT		01	01	01	01	01
85	0503010002	1800 GREASE FITTING		02	02	02	02	02
86	0521010737	50,4/50,6X 38,5 X 35 SLEEVE		02	02	02	02	02
87	0521052434	ASSY PORT MANUAL INSTRUCCION	4	01	01	01	01	01
88		DISC SECTION - 14/16/18/20/22D	7					



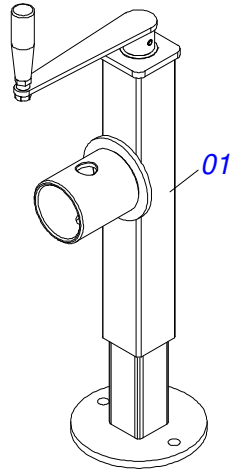
Item	Code	Description	See page	QT
01	0501067256	4" X 16" CYLINDER CASE		01
02	0503010002	1800 GREASE FITTING		02
03	0503030385	CYLINDER PLUG N-002		02
04	0521066345	PISTON ROD		01
05	0503010817	SELF LOCKING NUT 1.1/4 UNF ALTA G.5 ZN		01
06	0503010345	2-218 N 3006-9B O'RING		01
07	0503015633	SELEMASTER SEALING		01
08	0502012842	50,80 X 101,60 PISTON		01
09	0581010678	50,80 X 101 RING SUPPORT		01
10	0503015636	SCRAPER SEAL		01
11	0503018025	RING GUIDE W2-2250-750		01
12	0503018026	GASKET 1870-2000-375 B POLYMAX		01
13	0503010338	2-342 N 3006-9B O'RING		02
14	0503011061	8-342 BACK-UP RING		02
15	0502012822	END CAP 4"		01



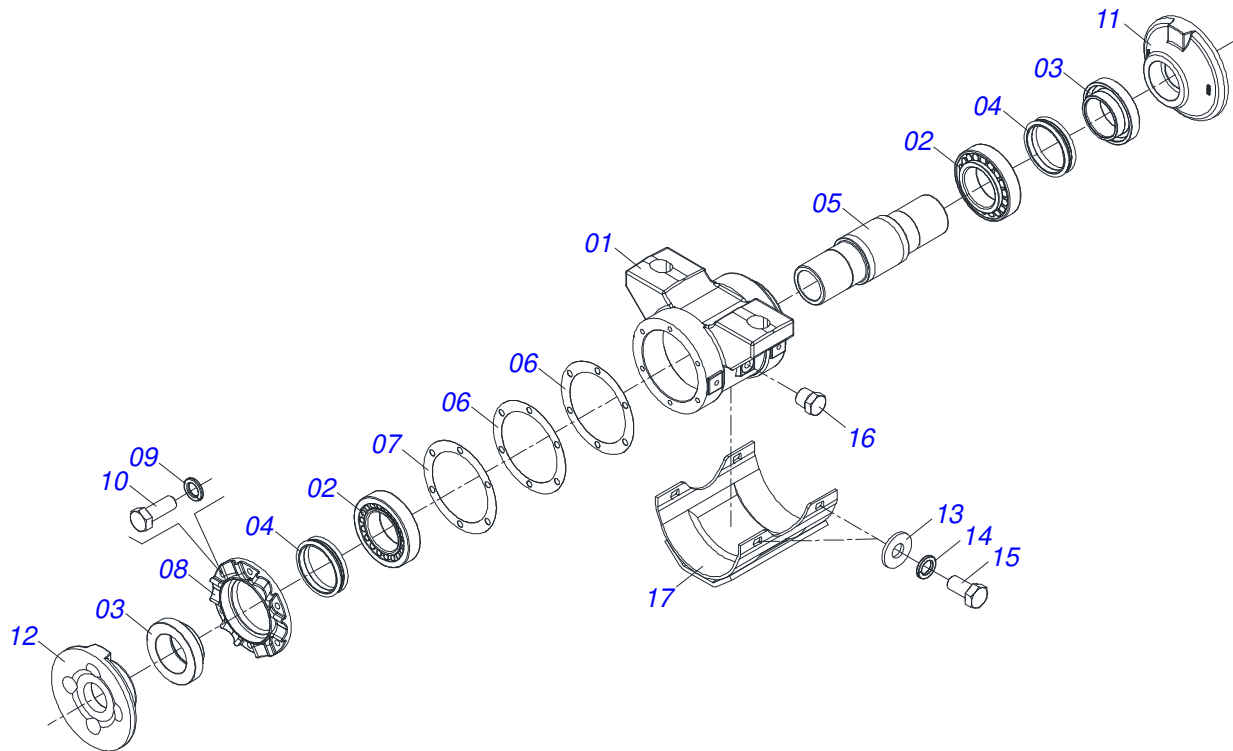
Item	Code	Description	See page	QT
01	0511067334	HOSE SUPPORT		01
02	0503010014	3/4" ZN G.5 (HEAVY) UNC HEX NUT		02
03	0501010322	20,50 X 46 X 4,00 ZN FLAT WASHER		02



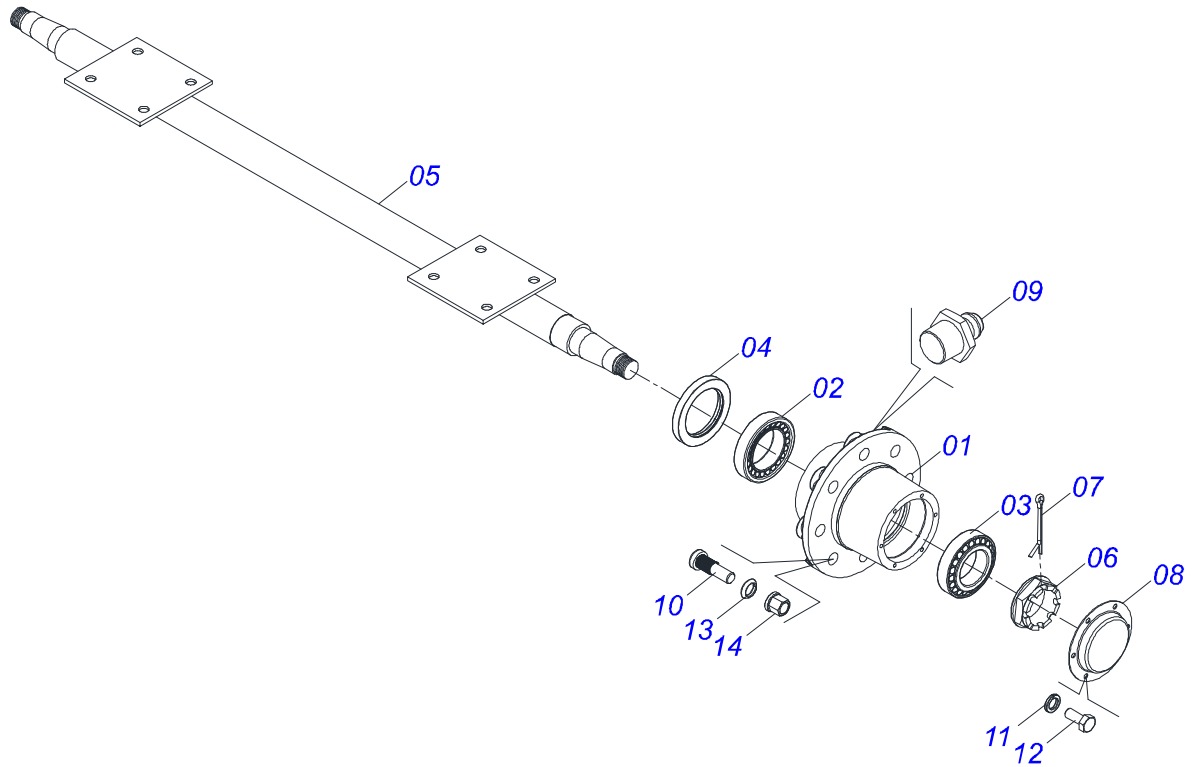
Item	Code	Description	See page	QT
01	0503060100	SUPPORT INSTRUCTION MANUAL		01
02	0503010267	NYLON CLAMP 3,60 X 1,3 X 155 MM		01
03	0503010363	BOLT 5/16 UNC X 1 C S G.2 ZN		01
04	0501010694	FLAT WASHER 32,50 X 75 X 4,75		01
05	0503010179	LOCK WASHER 5/16 ZN 1K01528		01
06	0503010337	NUT 5/16 UNC G.5 ZN		01
07	0511033060	BAG WITH INSTRUCTION MANUAL		01



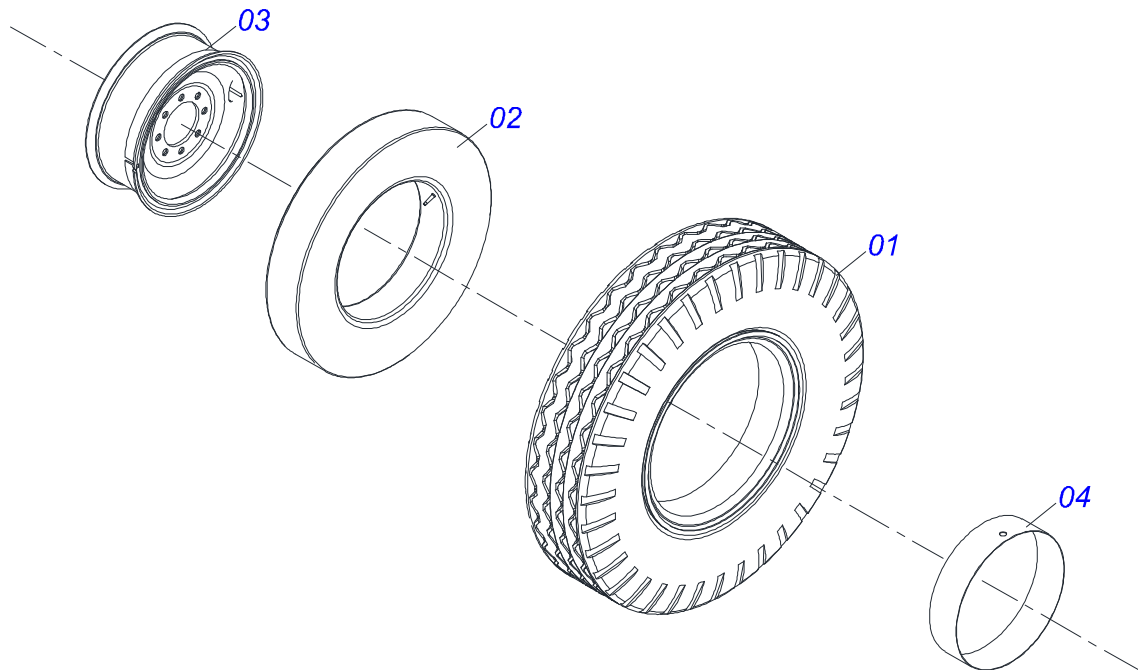
Item	Code	Description	See page	QT
01	0503062227	DRAWBAR JACK		01



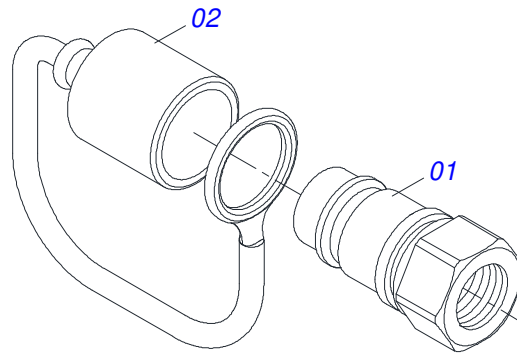
Item	Code	Description	See page	QT
01	0502012415	HOUSING BEARING		01
02	0503010118	32218 BEARING		02
03	0502040119	SEAL RETAINER		02
04	0503030029	RETAINER LP JB-259		02
05	0502040039	AXLE		01
06	0503030537	8.3" X 6.3" X 0.01" JOINT		02
07	0503030687	8.3" X 6.3" X 0.004" JOINT		01
08	0502010644	HOUSING CAP DM		01
09	0503010019	1/2" SPRING WASHER		06
10	0503010920	1/2 UNC X 1.1/2 C S G.5 ZN BOLT		06
11	0502040165	INNER FLANGE		01
12	0502040164	OUTER FLANGE		01
13	0511017302	FLAT WASHER 13,50 X 32,50 X 3,0 ZN		04
14	0503010019	1/2" SPRING WASHER		04
15	0503010834	1/2 X 1 BOLT		04
16	0503010856	OIL PLUG R 3/8 BSPT		02
17	0521062889	PROTECTION CAP		01



Item	Code	Description	See page	QT
01	0501110751	HUB AND SPINDLE WITH BOLT		02
02	0503010059	33287/33462 ROLLER BEARING		02
03	0503010007	3982/3920 ROLLER BEARING		02
04	0503010050	SEAL 00085-B		02
05	0501067251	3-1/2" X 84"" AXLE		01
06	0502040080	FLANGE NUT R.2.1/2" UN		02
07	0503011345	1/4" X 3.1/2" SPLIT PIN		02
08	0541013225	WHEEL HUB LID		02
09	0503010002	1800 GREASE FITTING		02
10	0503811339	BOLT		08
11	0503010179	LOCK WASHER 5/16 ZN 1K01528		16
12	0503010240	BOLT		16
13	0503811340	SPHERICAL SPRING WASHER		08
14	0503811341	NUT		08



Item	Code	Description	See page	QT
01	0503010494	9.0LX 20" X 14 PLY, TIRE		01
02	0503010057	INNER TIRE		01
03	0501068263	2.6"X0.8"X6.0"X 8F0. 9"X8.0" WHEEL		01
04	0503010470	PROTECTION		01



Item	Code	Description	See page	QT
01	0503011627	MALE QUICK COUPLER AGR 1/2 NPT		01
02	0503011882	MALE QUICK COUPLER CAP		01



civemasa

Technical Publications | Elaboration and Revision
ALESSANDRA PATRICIA KAWAHARA CARRILI

www.civemasa.com.br

