

**TERRACING PLOW**

**TC2 - 24/30/34/40/48D**

**Code:** 0501091118  
**Series:** S-1116  
**Revision:** 00  
**Revision Date:** FEVEREIRO/2022

# PARTS CATALOGUE

***CIVEMASA***




# PRODUCTS

Code	Description
0120140061	TC2 24 X 28 X 6,00 OL S-1116
0120140062	TC2 30 X 28 X 6,00 OL S-1116
0120140063	TC2 34 X 28 X 6,00 OL S-1116
0120140059	TC2 40 X 28 X 6,00 OL PA S-1116
0120140060	TC2 40 X 28 X 6,00 OL S-1116
0120140066	TC2 40 X 28 X 7,5 OL S-1116
0120140078	TC2 40 X 28 X 7,50 DL DM PA E 2.1/8 C/ PROT S-1116
0120140064	TC2 48 X 28 X 6,00 OL PA S-1116

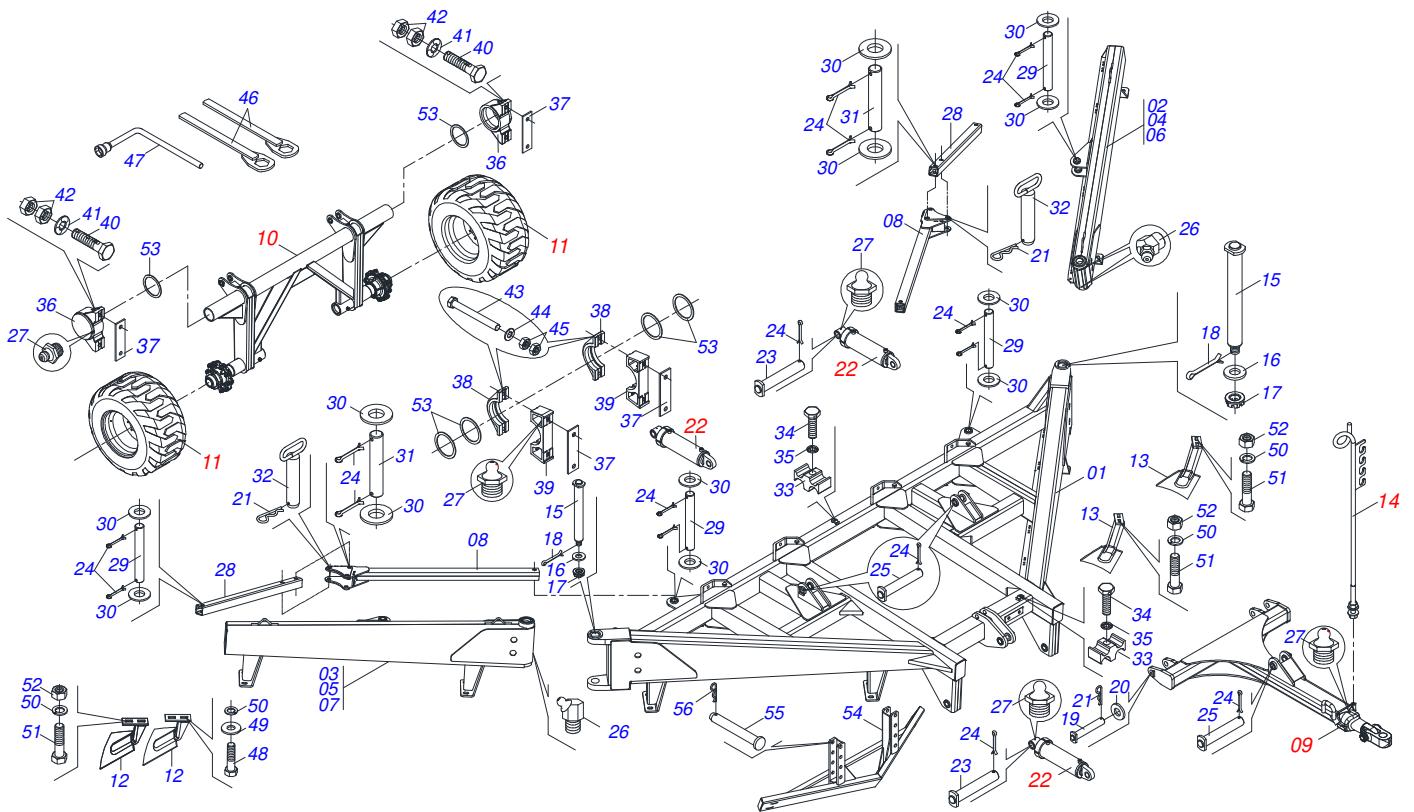
## ATTENTION: IMPORTANT

CIVEMASA reserves the right to improve and/or modify the technical features of its products, without obligation to do the same with those products already sold and without prior knowledge of the dealer or the consumer. The photos are only illustrative.



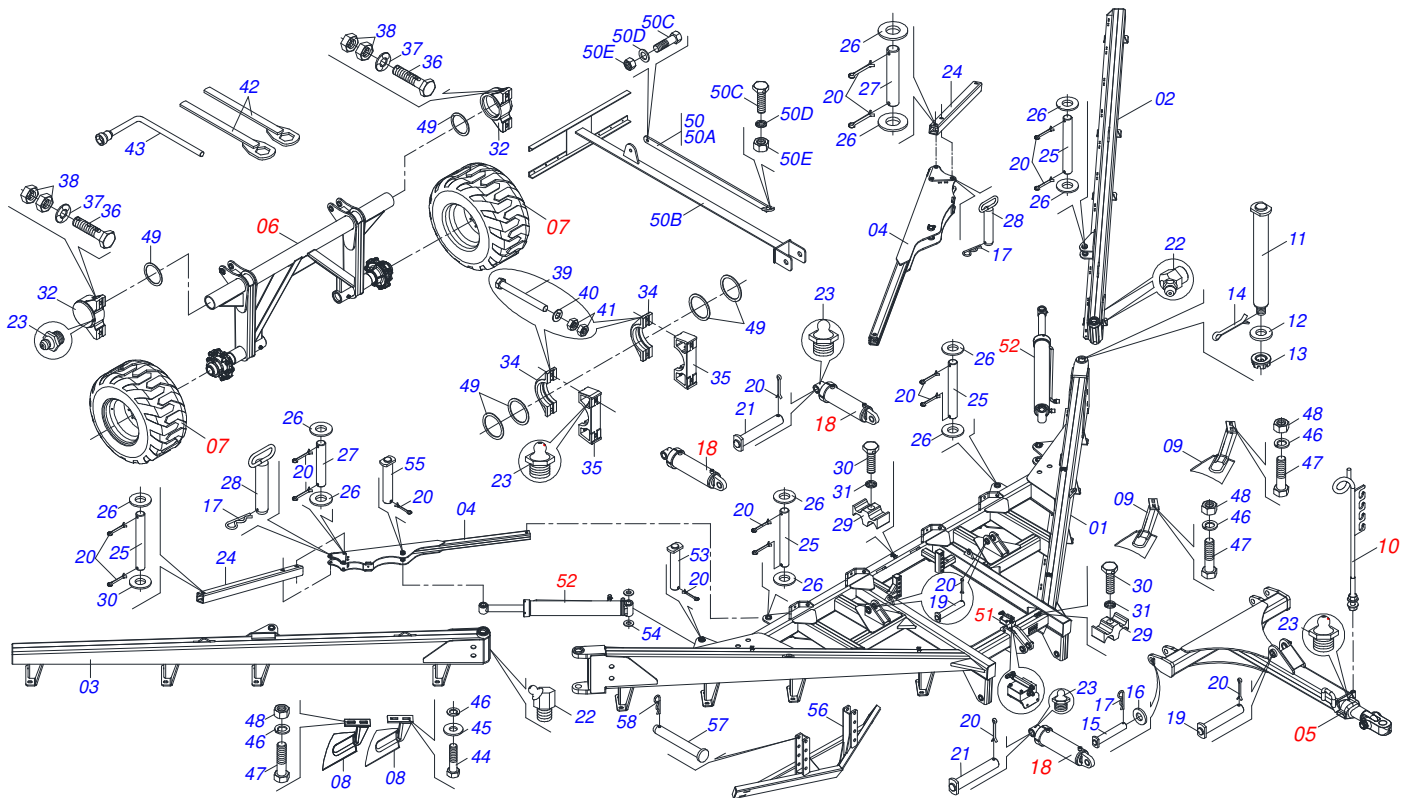
# INDEX

0909094761	24/30/34 DISCS - FRAME ASSY	.....	1
0909094762	FRAME ASSY - 40 DISCS	.....	2
0909092378	FRAME ASSY - 48 DISCS	.....	3
0909092504	RIGHT FRAME - 48 DISCS	.....	4
0909092505	LEFT FRAME - 48 DISCS	.....	5
0511059339	DRAWBAR ASSY	.....	6
0521041014	DRAWBAR ASSY	.....	7
0501040257	3/4 X 1200 HOSE HOLDER A	.....	8
0521042416	JOINT CUBE OF THE WHEEL ASSY	.....	9
0511059214	HYDRAULIC CYLINDER	.....	10
0511049943	HYDRAULIC CYLINDER 53,98 X 127 X 640 X 300	.....	11
0521046394	TURNBUCKLE ASSY	.....	12
0909094756	GANG DISC 24 FRONT	.....	13
0909094757	GANG DISC 24 REAR	.....	14
0909094758	GANG DISC 30 THE 34 FRONT	.....	15
0909094760	GANG DISC 30 THE 34 REAR	.....	16
0909094596	GANG DISC 40 FRONT	.....	17
0909094597	GANG DISC 40 REAR	.....	18
0909092379	FRONT GANG DISC 48	.....	19
0909092403	REAR GANG DISC	.....	20
0909094598	HYDRAULIC CIRCUIT 24 - 40	.....	21
0909092404	HYDRAULIC CIRCUIT 48	.....	22
0511057534	FLOW DIVIDING VALVE	.....	23
0521041852	AGRICULTURAL BEARING	.....	24
0521041797	OIL BATH BEARING 450 X 2.1/8	.....	25



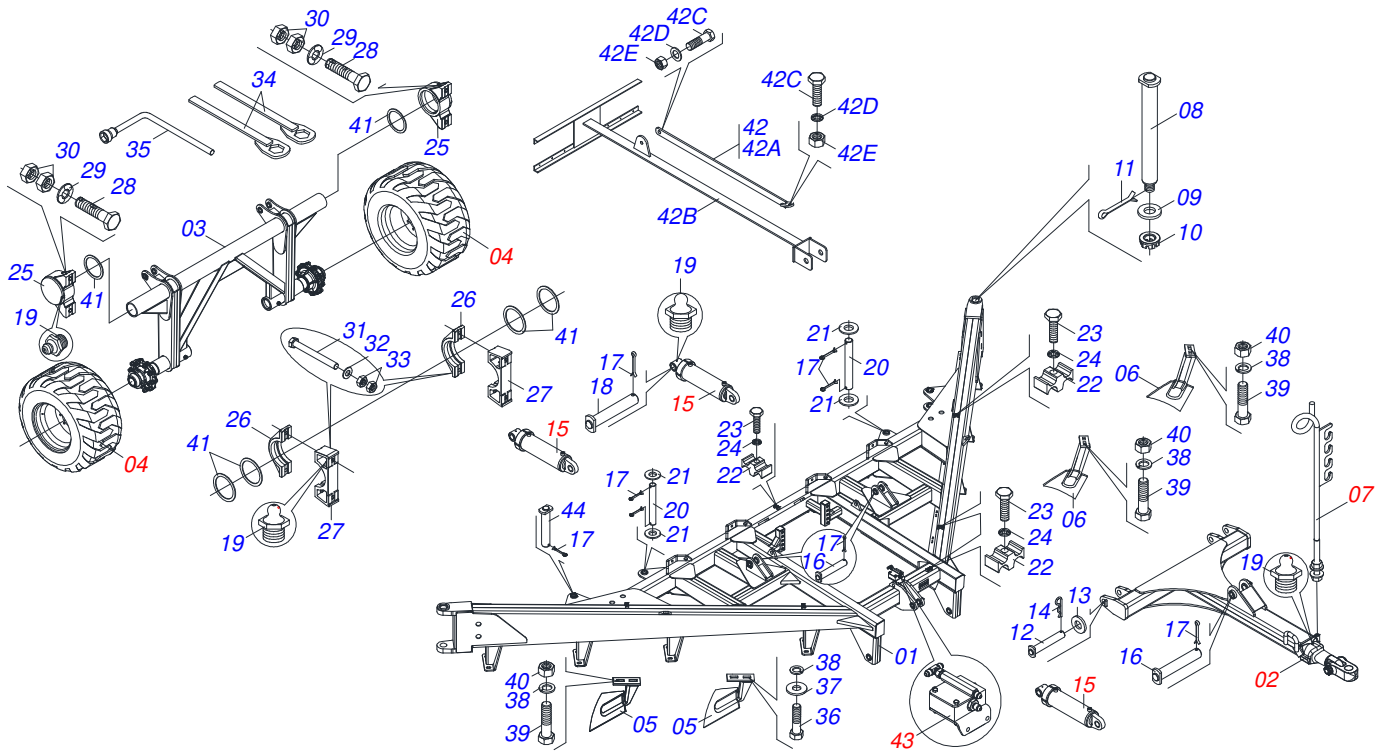
Item	Code	Description	See page	24	30	34
01	0521063368	CENTRAL FRAME		01	01	01
02	0521063446	LEFT REAR FRAME		01	00	00
03	0521063447	RIGHT REAR FRAME		01	00	00
04	0521063440	LEFT REAR FRAME		00	01	00
05	0521063441	RIGHT REAR FRAME		00	01	00
06	0521063376	LEFT REAR FRAME		00	00	01
07	0521063377	RIGHT REAR FRAME		00	00	01
08	0521063373	ADJUSTMENT BAR FRONT		02	02	00
08.	0521067641	ADJUSTMENT BAR		00	00	02
09	0521041014	DRAWBAR ASSY	7	01	01	01
10	0511053752	WHEEL ASSEMBLY WITH CUBE		01	01	01
11	0503061865	WHEELS AND TIRE		02	02	02
12	0521064930	RIGHT CLEANER SUPPORT		12	15	17
13	0521064931	LEFT CLEANER SUPPOFRT		12	15	17
14	0501040257	3/4 X 1200 HOSE HOLDER A	8	01	01	01
15	0521063374	PIVOT SHAFT FRAME REAR		02	02	02
16	0521019544	FLAT WASHER		02	02	02
17	0501011301	1.1/2 UNC 6FPP 2.5/16 NUT		02	02	02
18	0503010010	1/4" X 2.1/2" COTTERPIN		02	02	02
19	0521062685	ARTICULATION AXIS		02	02	02
20	0501017547	FLAT WASHER		02	02	02
21	0503031035	HAIR PIN		04	04	04
22	0511049943	HYDRAULIC CYLINDER 53,98 X 127 X 640 X 300	11	03	03	03
23	0521062684	PIVOT SHAFT		03	03	03
24	0503010534	3/8 X 2-1/2 COTTERPIN		18	18	18
25	0521062813	PIVOT SHAFT		03	03	03
26	0503010003	1845 GREASE FITTING		04	04	04
27	0503010002	1800 GREASE FITTING		08	08	08
28	0521063372	ADJUSTMENT BAR REAR		08	08	08
29	0541014984	1.5" X 8.8" COUPLING SHAFT		04	04	04
30	0511019685	FLAT WASHER		12	12	12

Item	Code	Description	See page	24	30	34
31	0571012022	COUPLING SHAFT		02	02	02
32	0521063391	COUPLING SHAFT WITH LINK		02	02	02
33	0502012702	BODY SUPPORT CLAMP		02	02	02
34	0503012555	SCREW 7/16 UNC X 2 CS RT G.7 ZN		02	02	02
35	0503010180	7/16" SPRING WASHER		02	02	02
36	0502011588	AXLE WHEEL BEARING		02	02	02
37	0571013421	CHOCK BEARING		04	04	04
38	0502011724	INF BEARING SEMI		02	02	02
39	0502011725	UPPER BEARING SEMI		02	02	02
40	0503013310	7/8 X 4 BOLT		04	04	04
41	0501014251	FLAT WASHER		04	04	04
42	0503010417	7/8" NUT		08	08	08
43	0511016281	3/4" X 8" BOLT		04	04	04
44	0521013710	WASHER SEMIMAN		04	04	04
45	0503012183	SNC 3/4" ZIN 1K03097 NUT		08	08	08
46	0501061044	2-1/8" AND 2-1/2" CABLE FLAT WRENCH		02	02	02
47	0501061045	1" WRENCH CYLINDRICAL		01	01	01
48	0501010155	1/2" X 1" BOLT		04	04	04
49	0501010937	13.5 X 28 X 3 FLAT WASHER		04	04	04
50	0503010019	1/2" SPRING WASHER		48	60	68
51	0501010243	1/2" X 1-1/2" BOLT		44	56	64
52	0503012682	1/2" BSW NUT		44	56	64
53	0503012222	FELT RING		06	06	06
54	0511064092	SET SLIDE		01	01	01
55	0521017413	PIN WITH HEAD PN-357		02	02	02
56	0503031470	TM 251 X 4,0 STAPLE		02	02	02



Item	Code	Description	See page	QT
01	0531061741	CENTRAL FRAME		01
02	0521063376	LEFT REAR FRAME		01
03	0521063377	RIGHT REAR FRAME		01
04	0521066980	ADJUSTMENT BAR FRONT		01
04.	0521068155	LEFT FRONT ADJUSTMENT BAR		01
05	0521041014	DRAWBAR ASSY	7	01
06	0511053752	WHEEL ASSEMBLY WITH CUBE		01
07	0503061865	WHEELS AND TIRE		02
08	0521064930	RIGHT CLEANER SUPPORT		20
09	0521064931	LEFT CLEANER SUPPOFRT		20
10	0501040257	3/4 X 1200 HOSE HOLDER A	8	01
11	0521063374	PIVOT SHAFT FRAME REAR		02
12	0521019544	FLAT WASHER		02
13	0501011301	1.1/2 UNC 6FPP 2.5/16 NUT		02
14	0503010010	1/4" X 2.1/2" COTTERPIN		02
15	0521062685	ARTICULATION AXIS		02
16	0501017547	FLAT WASHER		02
17	0503031035	HAIR PIN		04
18	0511049943	HYDRAULIC CYLINDER 53,98 X 127 X 640 X 300	11	03
19	0521062684	PIVOT SHAFT		03
20	0503010534	3/8 X 2-1/2 COTTERPIN		18
21	0521062813	PIVOT SHAFT		03
22	0503010003	1845 GREASE FITTING		04
23	0503010002	1800 GREASE FITTING		08
24	0521066982	ADJUSTMENT BAR REAR		02
25	0541014984	1.5" X 8.8" COUPLING SHAFT		04
26	0511019685	FLAT WASHER		12
27	0571012022	COUPLING SHAFT		02
28	0521063391	COUPLING SHAFT WITH LINK		02
29	0502012702	BODY SUPPORT CLAMP		02
30	0503012555	SCREW 7/16 UNC X 2 CS RT G.7 ZN		02

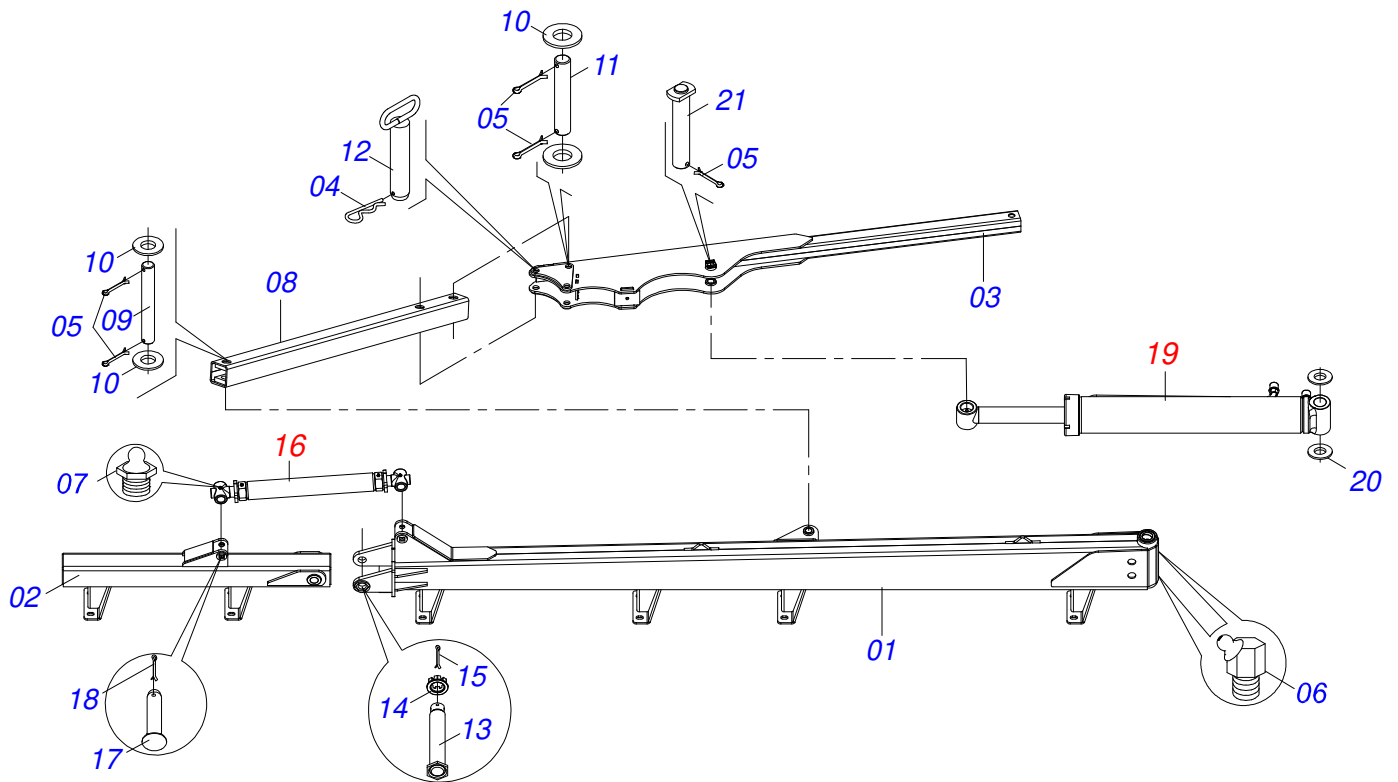
Item	Code	Description	See page	QT
31	0503010180	7/16" SPRING WASHER		02
32	0502011588	AXLE WHEEL BEARING		02
34	0502011724	INF BEARING SEMI		02
35	0502011725	UPPER BEARING SEMI		02
36	0503013310	7/8 X 4 BOLT		04
37	0501014251	FLAT WASHER		04
38	0503010417	7/8" NUT		08
39	0511016281	3/4" X 8" BOLT		04
40	0521013710	WASHER SEMIMAN		04
41	0503012183	SNC 3/4" ZIN 1K03097 NUT		08
42	0501061044	2-1/8" AND 2-1/2" CABLE FLAT WRENCH		02
43	0501061617	1" GANG BOLT WRENCH		01
44	0501010155	1/2" X 1" BOLT		04
45	0501010937	13.5 X 28 X 3 FLAT WASHER		04
46	0503010019	1/2" SPRING WASHER		80
47	0501010243	1/2" X 1-1/2" BOLT		76
48	0503012682	1/2" BSW NUT		76
49	0503012222	FELT RING		06
50	0521043309	SET SUPPORT LOADING		02
50A	0521064388	BAR ASSY		02
50B	0521064389	SUPPORT LOADING		02
50C	0503014950	7/8" UNC X 3" BOLT		04
50D	0501010076	FLAT WASHER		08
50E	0503010417	7/8" NUT		04
51	0511057534	FLOW DIVIDING VALVE	23	01
52	0511059214	HYDRAULIC CYLINDER	10	02
53	0521066971	PIVOT SHAFT		02
54	0581011815	FLAT WASHER		04
55	0521062684	PIVOT SHAFT		02
56	0511064092	SET SLIDE		01
57	0521017413	PIN WITH HEAD PN-357		02
58	0503031470	TM 251 X 4,0 STAPLE		02



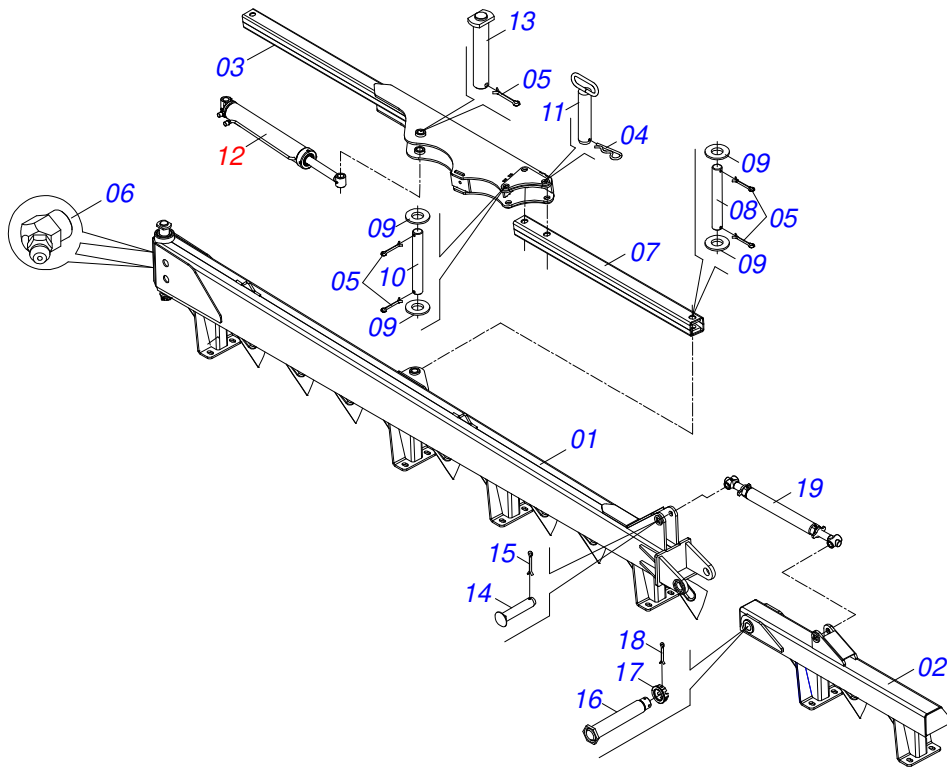
Item	Code	Description	See page	QT
01	0521063449	CENTRAL FRAME		01
02	0521041014	DRAWBAR ASSY	7	01
03	0511053752	WHEEL ASSEMBLY WITH CUBE		01
04	0503061865	WHEELS AND TIRE		02
05	0521064930	RIGHT CLEANER SUPPORT		14
06	0521064931	LEFT CLEANER SUPPOFRT		14
07	0501040257	3/4 X 1200 HOSE HOLDER A	8	01
08	0521063374	PIVOT SHAFT FRAME REAR		02
09	0521019544	FLAT WASHER		02
10	0501011301	1.1/2 UNC 6FPP 2.5/16 NUT		02
11	0503010010	1/4" X 2.1/2" COTTERPIN		02
12	0521062685	ARTICULATION AXIS		02
13	0501017547	FLAT WASHER		02
14	0503031035	HAIR PIN		02
15	0511049943	HYDRAULIC CYLINDER 53,98 X 127 X 640 X 300	11	03
16	0521062684	PIVOT SHAFT		02
17	0503010534	3/8 X 2-1/2 COTTERPIN		12
18	0521062813	PIVOT SHAFT		03
19	0503010002	1800 GREASE FITTING		06
20	0541014984	1.5" X 8.8" COUPLING SHAFT		02
21	0511019685	FLAT WASHER		04
22	0502012702	BODY SUPPORT CLAMP		02
23	0503012555	SCREW 7/16 UNC X 2 CS RT G.7 ZN		02
24	0503010180	7/16" SPRING WASHER		02
25	0502011588	AXLE WHEEL BEARING		02
26	0502011724	INF BEARING SEMI		02
27	0502011725	UPPER BEARING SEMI		02
28	0503013310	7/8 X 4 BOLT		04
29	0501014251	FLAT WASHER		04
30	0503010417	7/8" NUT		08
31	0511016281	3/4" X 8" BOLT		04



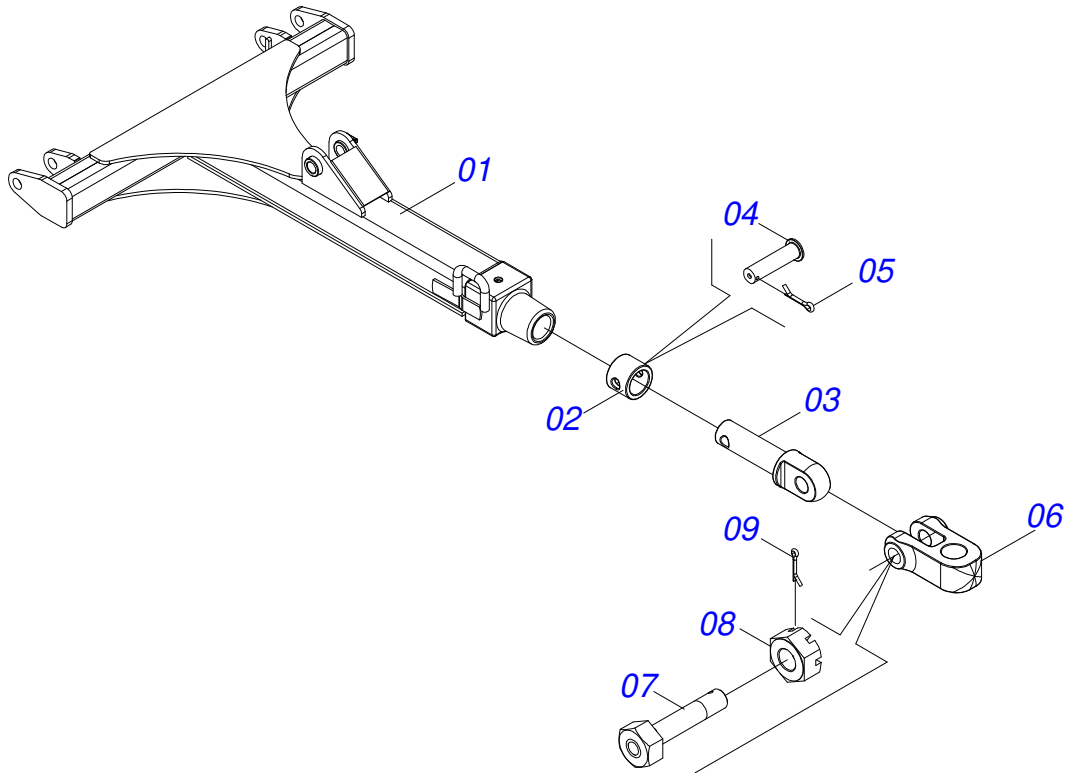
Item	Code	Description	See page	QT
32	0521013710	WASHER SEMIMAN		04
33	0503012183	SNC 3/4" ZIN 1K03097 NUT		08
34	0501061044	2-1/8" AND 2-1/2" CABLE FLAT WRENCH		02
35	0501061617	1" GANG BOLT WRENCH		01
36	0501010155	1/2" X 1" BOLT		04
37	0501010937	13.5 X 28 X 3 FLAT WASHER		04
38	0503010019	1/2" SPRING WASHER		80
39	0501010243	1/2" X 1-1/2" BOLT		76
40	0503012682	1/2" BSW NUT		76
41	0503012222	FELT RING		06
42	0521043309	SET SUPPORT LOADING		02
42A	0521064388	BAR ASSY		02
42B	0521064389	SUPPORT LOADING		02
42C	0503014950	7/8" UNC X 3" BOLT		04
42D	0501010076	FLAT WASHER		08
42E	0503010417	7/8" NUT		04
43	0511057534	FLOW DIVIDING VALVE	23	01
44	0521066971	PIVOT SHAFT		02



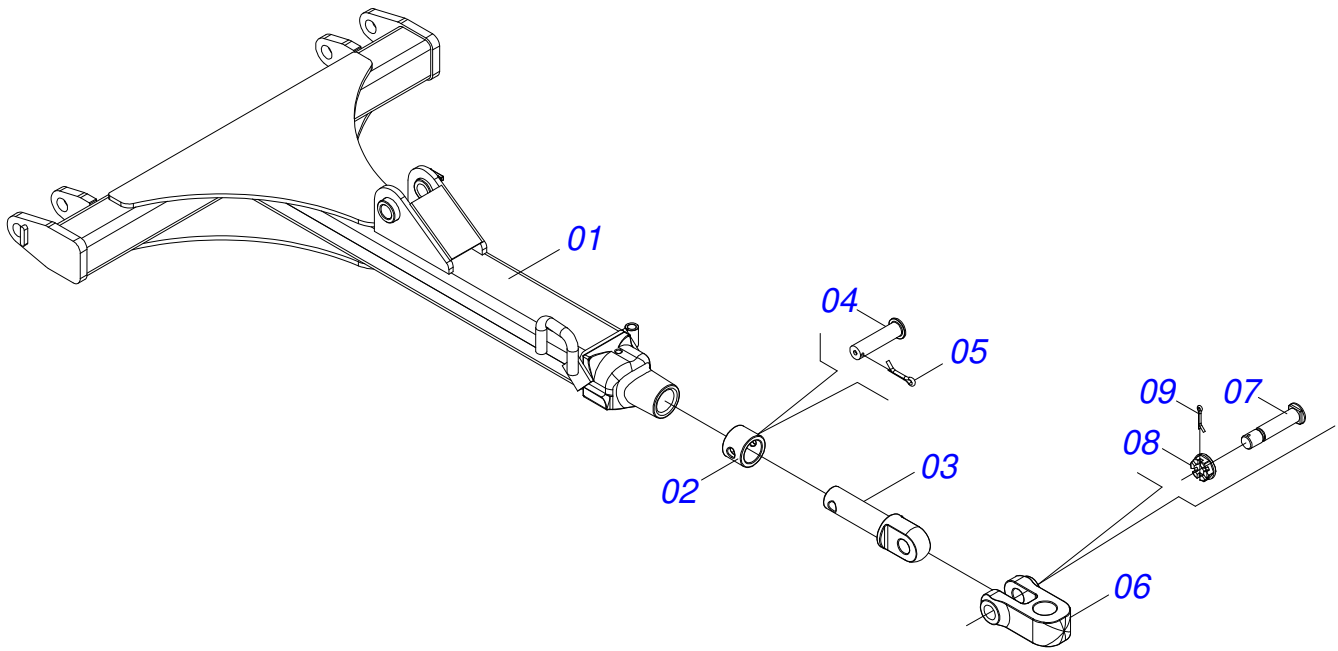
Item	Code	Description	See page	QT
01	0521063377	RIGHT REAR FRAME		01
02	0521066985	LH ADDITIONAL FRAME		01
03	0521066980	ADJUSTMENT BAR FRONT		01
04	0503031035	HAIR PIN		01
05	0503010534	3/8 X 2-1/2 COTTERPIN		05
06	0503010003	1845 GREASE FITTING		02
07	0503010002	1800 GREASE FITTING		02
08	0521066982	ADJUSTMENT BAR REAR		01
09	0541014984	1.5" X 8.8" COUPLING SHAFT		01
10	0511019685	FLAT WASHER		04
11	0571012022	COUPLING SHAFT		01
12	0521063391	COUPLING SHAFT WITH LINK		01
13	0521066974	PIVOT SHAFT		01
14	0501010888	1.3/4" 2.5/16" CASTLE NUT		01
15	0503012267	5/16" X 3" COTTER PIN		01
16	0521046394	TURNBUCKLE ASSY	12	01
17	0521014092	AXLE LOCK		01
18	0503010523	1/4" X 2" COTTERPIN		01
19	0511059214	HYDRAULIC CYLINDER	10	01
20	0581011815	FLAT WASHER		02
21	0521062684	PIVOT SHAFT		01



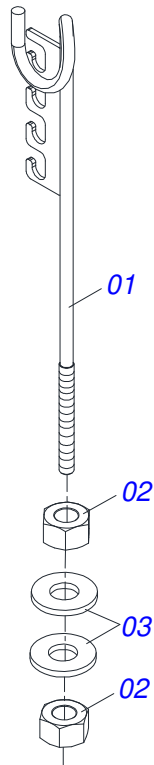
Item	Code	Description	See page	QT
01	0521063376	LEFT REAR FRAME		01
02	0521066969	RH ADDITIONAL FRAME		01
03	0521066980	ADJUSTMENT BAR FRONT		01
04	0503031035	HAIR PIN		01
05	0503010534	3/8 X 2-1/2 COTTERPIN		05
06	0503010003	1845 GREASE FITTING		02
07	0521066982	ADJUSTMENT BAR REAR		01
08	0541014984	1.5" X 8.8" COUPLING SHAFT		01
09	0511019685	FLAT WASHER		04
10	0571012022	COUPLING SHAFT		01
11	0521063391	COUPLING SHAFT WITH LINK		01
12	0511059214	HYDRAULIC CYLINDER	10	01
13	0521062684	PIVOT SHAFT		01
14	0521014092	AXLE LOCK		01
15	0503010523	1/4" X 2" COTTERPIN		01
16	0521066974	PIVOT SHAFT		01
17	0501010888	1.3/4" 2.5/16" CASTLE NUT		01
18	0503012267	5/16" X 3" COTTER PIN		01
19	0521046394	TURNBUCKLE ASSY	12	01



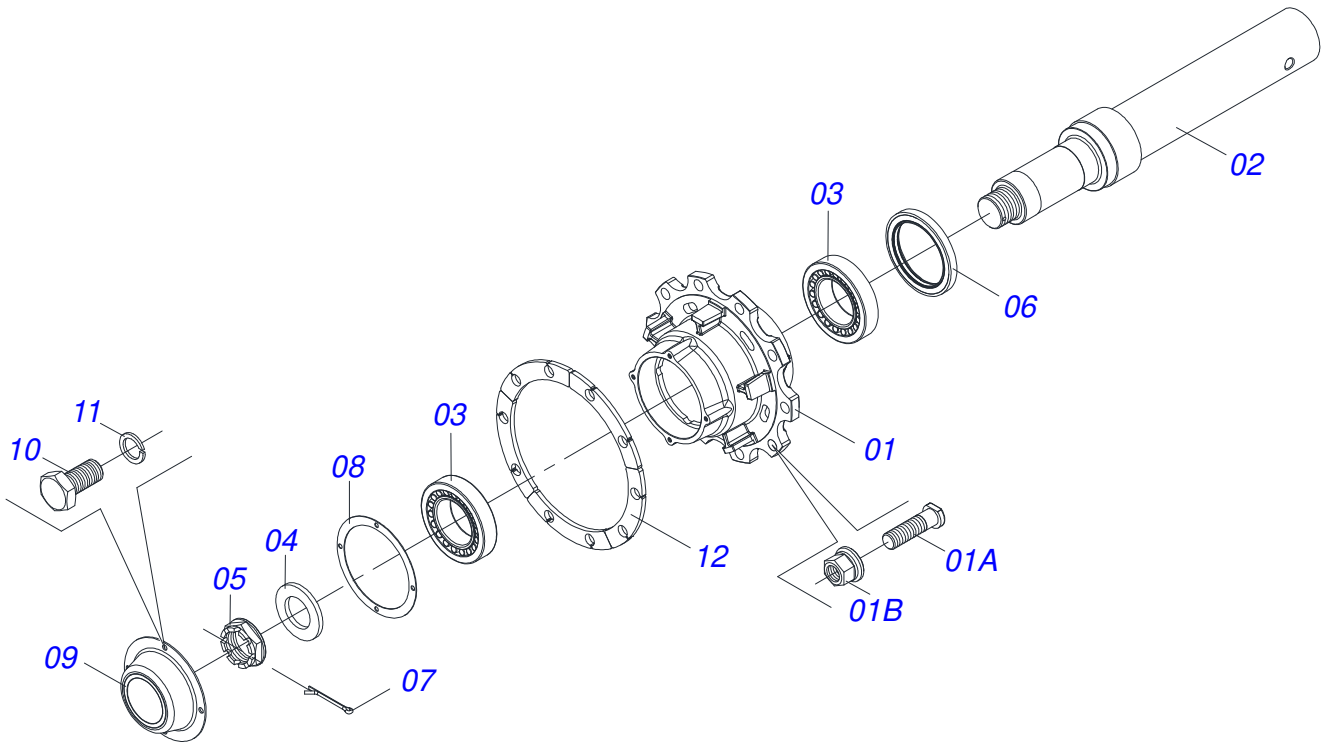
Item	Code	Description	See page	QT
01	0521066973	DRAWBAR PIVOT		01
02	0502040263	ANEL TRAVA ENGATE		01
03	0502040264	DRAWBOLT		01
04	0561017306	COUPLING SHAFT		01
05	0503010523	1/4" X 2" COTTERPIN		01
06	0502040849	U COUPLING		01
07	0511067199	2" BOLT		01
08	0502040558	2" CASTLE NUT		01
09	0503010074	3/8 X 0,15" COTTERPIN		01



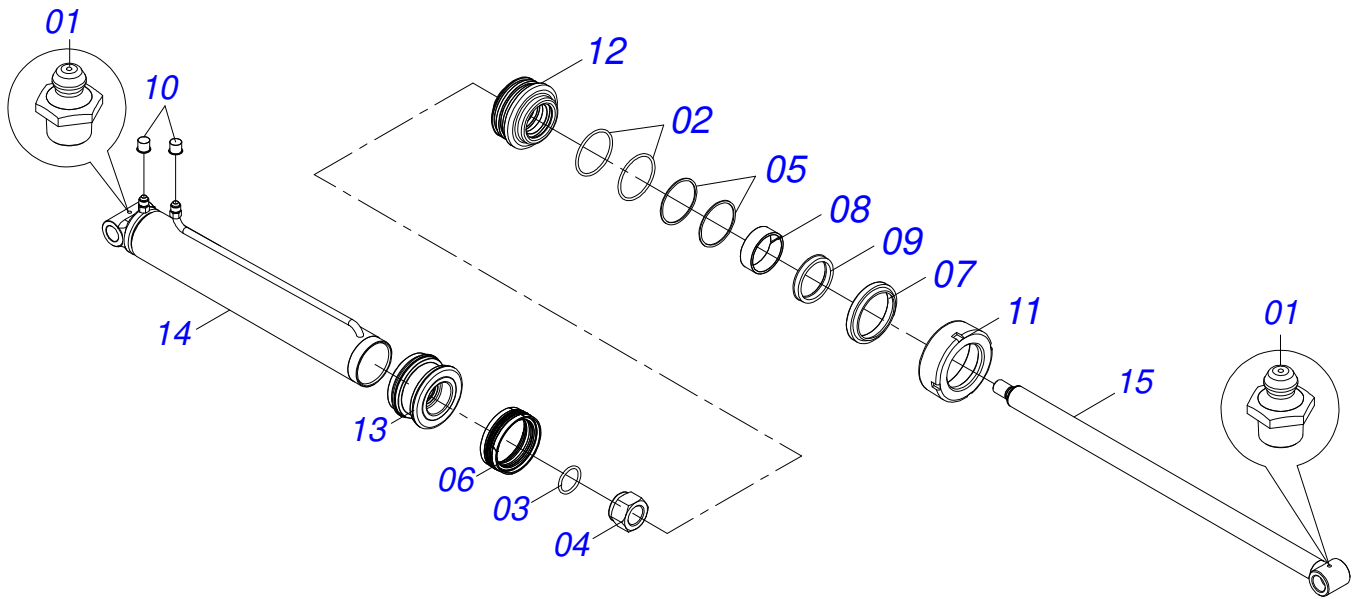
Item	Code	Description	See page	QT
01	0521063370	DRAWBAR		01
02	0502040327	ANEL TRAVA ENGATE		01
03	0502040223	DRAWBOLT		01
04	0511014902	COUPLING SHAFT		01
05	0503010571	1/4" X 1.1/2 COTTERPIN		01
06	0502040733	CLEVIS		01
07	0521012545	COUPLING SHAFT		01
08	0501011301	1.1/2 UNC 6FPP 2.5/16 NUT		01
09	0503010010	1/4" X 2.1/2" COTTERPIN		01



Item	Code	Description	See page	QT
01	0511067334	HOSE SOPPORT ASSY		01
02	0503010014	3/4" NUT		02
03	0501010322	FLAT WASHER		02

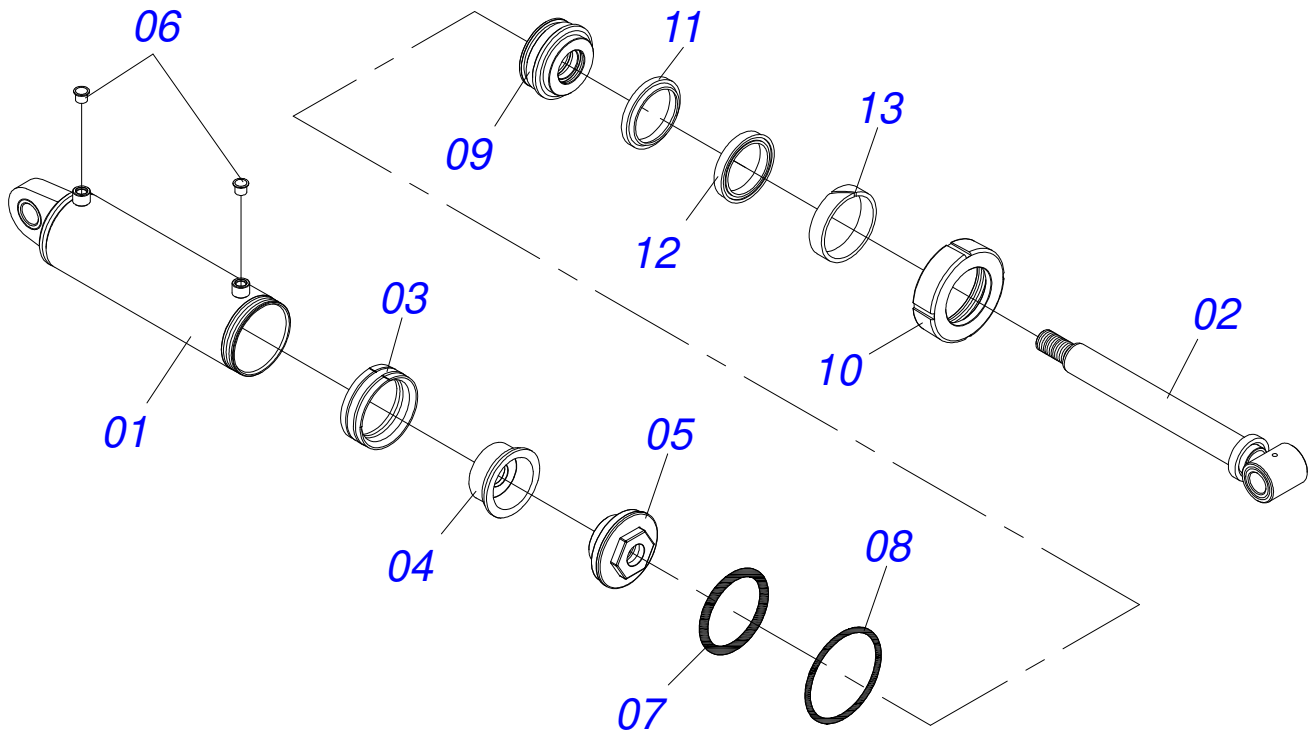


Item	Code	Description	See page	QT
01	0501110761	HUB AND BOLT		01
01A	0503014050	22 X 1.5 BOLT		10
01B	0503014048	22 X 1.5 HEX NUT		10
02	0571014258	SPINDLE		01
03	0503010118	32218 BEARING		02
04	0531019986	64 X 110 X 9.5 FLAT WASHER		01
05	0502040080	FLANGE NUT R.2.1/2 UN		01
06	0503013541	RETAINER		01
07	0503012213	1/4" COTTERPIN		01
08	0503013548	JOINT CORK		01
09	0503013549	HUB COVER		01
10	0503013546	BOLT SX MA5,8 M10X1,5X20ZA DI		04
11	0503013542	M10 SPRING WASHER		04
12	0561015521	FLANGE		05

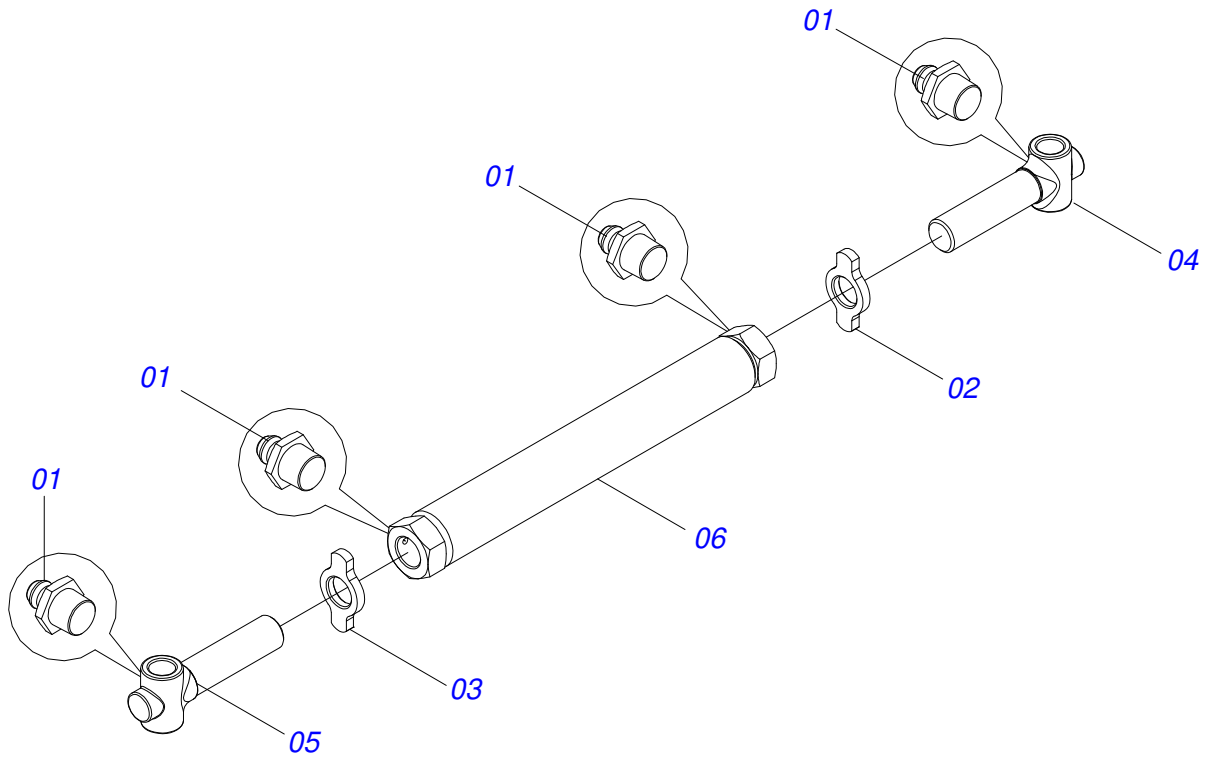


Item	Code	Description	See page	QT
01	0503010002	1800 GREASE FITTING		02
02	0503010338	2-342 N 3006-9B O'RING		02
03	0503010345	2-218 N 3006-9B O'RING		01
04	0503010817	1.1/4" SELF LOCKING NUT		01
05	0503011061	8-342 BACK-UP RING		02
06	0503015633	SELEMASTER SEALING		01
07	0503015636	SCRAPER SEAL		01
08	0503018025	RING GUIDE		01
09	0503018026	1870-2000-375 B GASKET		01
10	0503030387	PLUG		02
11	0502012822	101.60 END CAP		01
12	0581010678	50,80 X 101 RING SUPPORT		01
13	0502012842	50,80 X 101,60 PISTON		01
14	0521066978	CYLINDER CASE		01
15	0521066979	TURNBUCLE		01
16	0511032511	ASSY CYLINDER REPAIR KIT 50.8X101.6		01

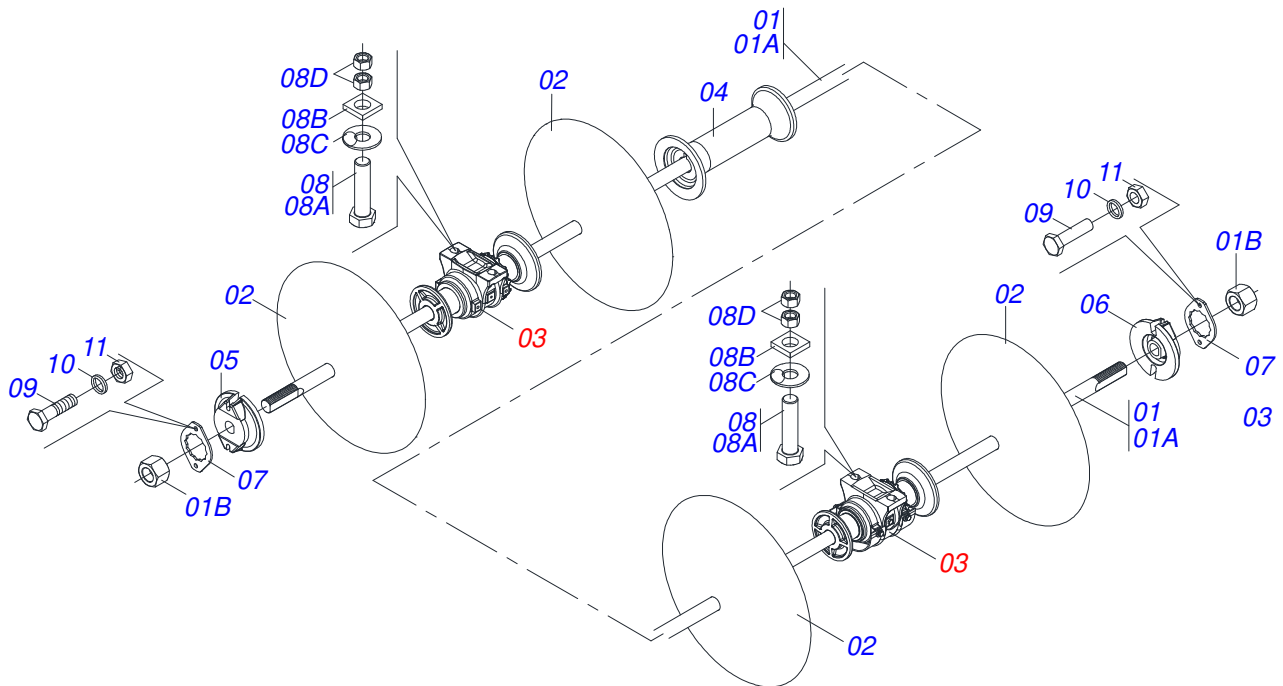




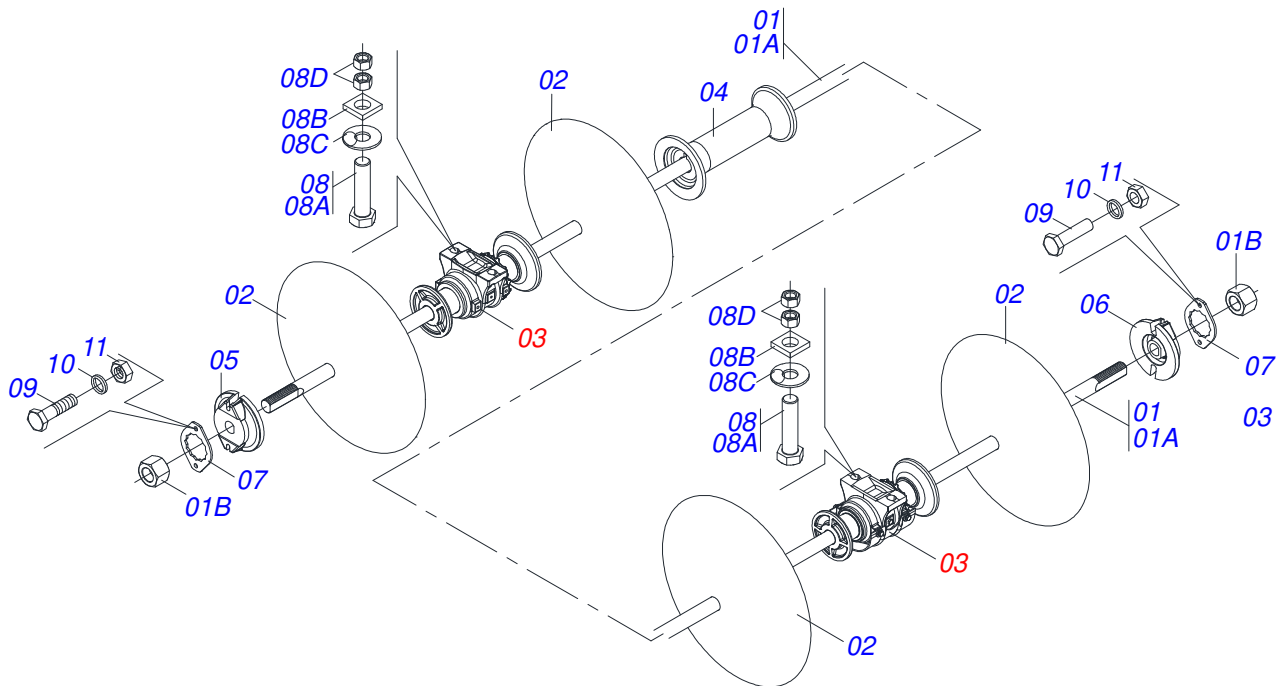
Item	Code	Description	See page	QT
01	0521062687	CASE		01
02	0521062686	53,98 X 555 TURNBUCKLE		01
03	0503015643	SEAL		01
04	0561016583	PISTON BODY		01
05	0502012645	PISTON BODY		01
06	0503030384	CON PLUG N-001		02
07	0503010351	2-425 N 3006-9B O'RING		01
08	0503011062	8-425 BACK-UP RING		01
09	0502012646	RING SUPPORT		01
10	0502010382	5" END CAP		01
11	0503015642	U-CUP SEALING		01
12	0503015715	SCRAPER SEALING		01
13	0503015641	WEAR RING		01
14	0501038075	FULL REPAIR SET CIL 53.98 X 127		01



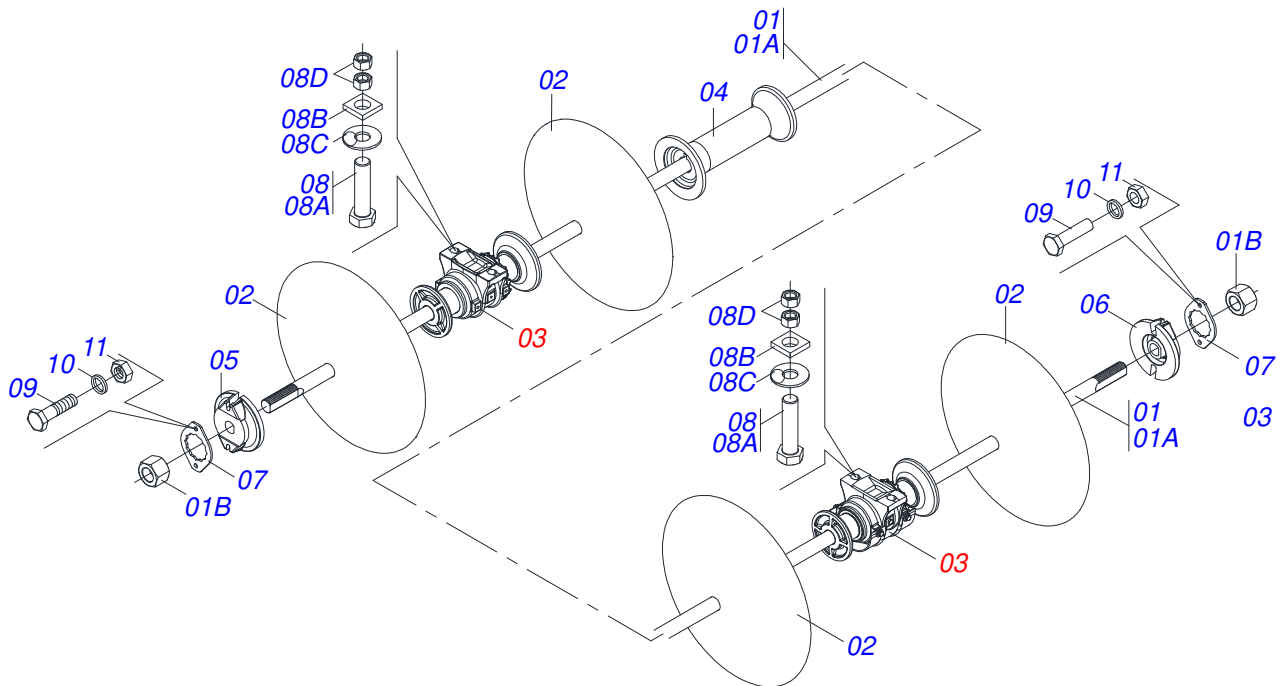
Item	Code	Description	See page	QT
001	0503010002	1800 GREASE FITTING		04
002	0551010782	RIGHT LOCKNUT		01
003	0551010993	LEFT LOCKNUT		01
004	0502040568	R.1-3/4 TURNBUCKLE		01
005	0502040570	REGULATOR SPINDLE		01
006	0521066972	ADJUSTMENT NUT		01



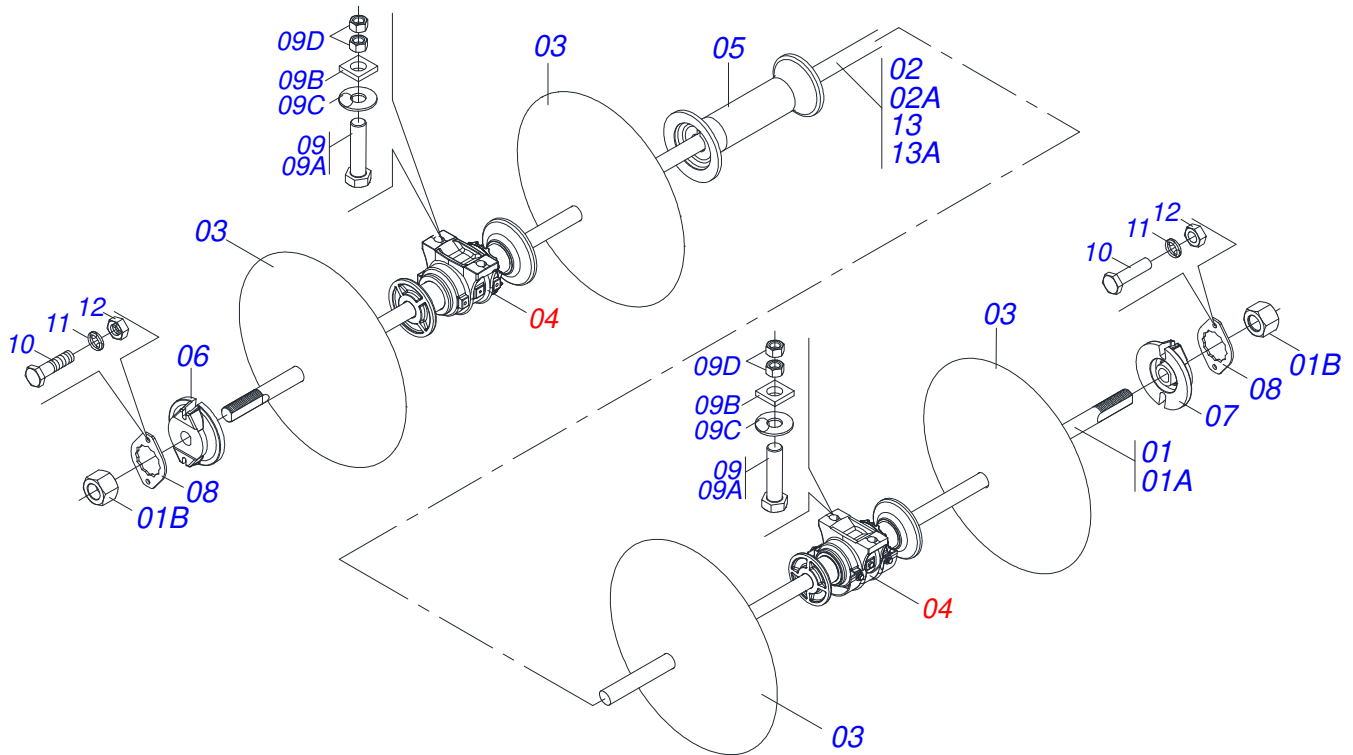
Item	Code	Description	See page	QT
01	0511052146	2-1/8 X 2495 AXLE WITH NUT		02
01A	0571012019	2-1/8 X 2495 AXLE		02
01B	0502040063	2.1/8" X 54 99 NUT		04
02	0601039004	26" X 0.2" PLAIN DISC BLADE		12
03	0521041852	AGRICULTURAL BEARING	24	04
03.	0521041797	OIL BATH BEARING 450 X 2.1/8	25	04
04	0502012711	447 SPACER		06
05	0502010594	2-1/8" EXTERNAL AXLE WASHER		02
06	0502010595	2-1/8" INNER AXLE WASHER		02
07	0541010368	NUT LOCK		04
08	0501042139	1" X 4.3" ASSY BOLT		08
08A	0501010952	1" X 4.3" BOLT		08
08B	0501010951	1" SQUARE WASHER		08
08C	0541010210	FLAT WASHER		08
08D	0501010059	1.5/8 NUT		16
09	0503010232	5/8" X 1.3/4" BOLT		08
10	0503010027	5/8" SPRING WASHER		08
11	0503010013	5/8" NUT		08



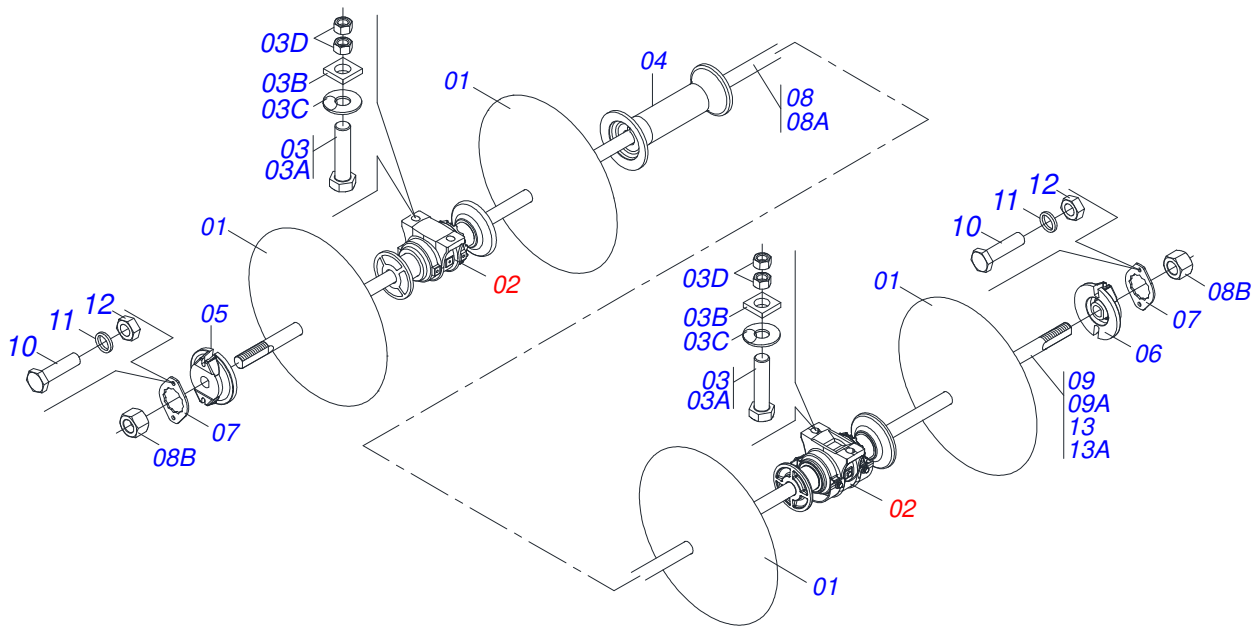
Item	Code	Description	See page	QT
01	0511052146	2-1/8 X 2495 AXLE WITH NUT		02
01A	0571012019	2-1/8 X 2495 AXLE		02
01B	0502040063	2.1/8" X 54 99 NUT		04
02	0601039004	26" X 0.2" PLAIN DISC BLADE		12
03	0521041852	AGRICULTURAL BEARING	24	04
03.	0521041797	OIL BATH BEARING 450 X 2.1/8	25	04
04	0502012711	447 SPACER		06
05	0502010594	2-1/8" EXTERNAL AXLE WASHER		02
06	0502010595	2-1/8" INNER AXLE WASHER		02
07	0541010368	NUT LOCK		04
08	0501042139	1" X 4.3" ASSY BOLT		08
08A	0501010952	1" X 4.3" BOLT		08
08B	0501010951	1" SQUARE WASHER		08
08C	0541010210	FLAT WASHER		08
08D	0501010059	1.5/8 NUT		16
09	0503010232	5/8" X 1.3/4" BOLT		08
10	0503010027	5/8" SPRING WASHER		08
11	0503010013	5/8" NUT		08



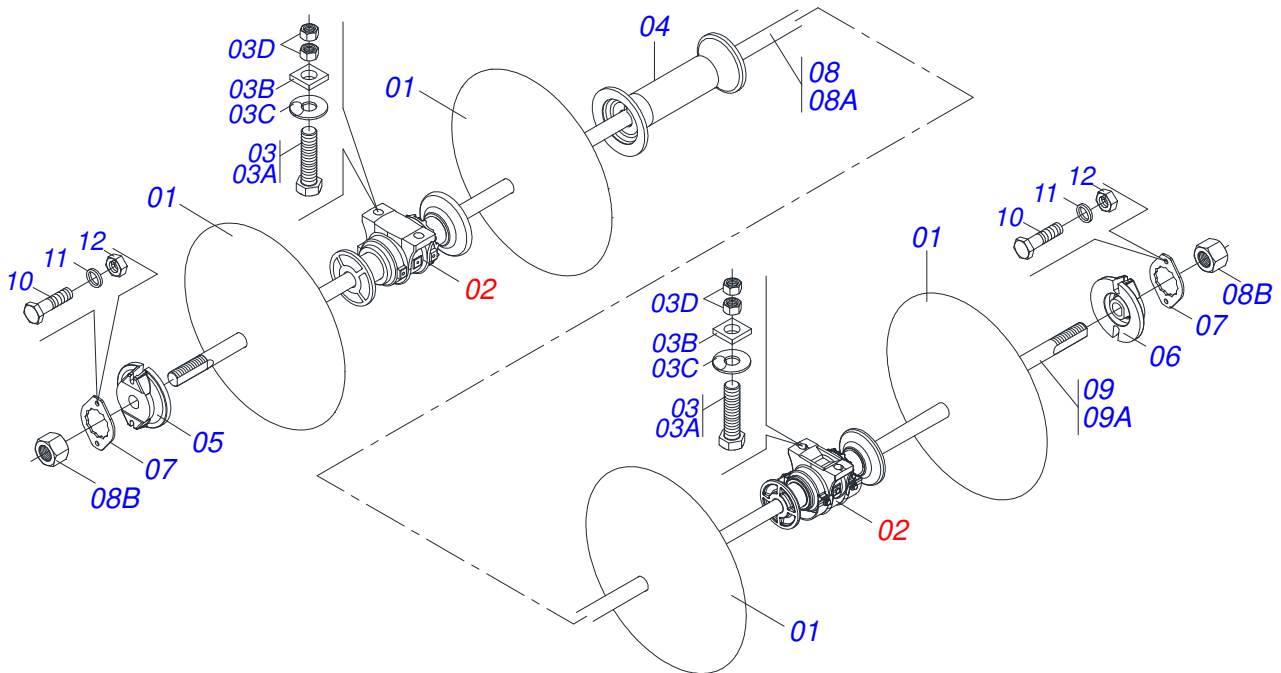
Item	Code	Description	See page	30 34
01	0511052146	2-1/8 X 2495 AXLE WITH NUT		02 02
01A	0571012019	2-1/8 X 2495 AXLE		02 02
01B	0502040063	2.1/8" X 54 99 NUT		04 04
02	0601039004	26" X 0.2" PLAIN DISC BLADE		12 12
03	0521041852	AGRICULTURAL BEARING	24	04 04
03.	0521041797	OIL BATH BEARING 450 X 2.1/8	25	04 04
04	0502012711	447 SPACER		06 06
05	0502010594	2-1/8" EXTERNAL AXLE WASHER		02 02
06	0502010595	2-1/8" INNER AXLE WASHER		02 02
07	0541010368	NUT LOCK		04 04
08	0501042139	1" X 4.3" ASSY BOLT		08 08
08A	0501011547	1" X 4-1/2" BOLT		08 08
08B	0502012861	1" SQUARE WASHER		08 08
08C	0541010210	FLAT WASHER		08 08
08D	0501010059	1.5/8 NUT		16 16
09	0503010232	5/8" X 1.3/4" BOLT		08 08
10	0503010027	5/8" SPRING WASHER		08 08
11	0503010013	5/8" NUT		08 08



Item	Code	Description	See page	30 34
01	0511052146	2-1/8 X 2495 AXLE WITH NUT		00 02
01A	0571012019	2-1/8 X 2495 AXLE		00 02
01B	0502040063	2.1/8" X 54 99 NUT		08 08
02	0511053649	2-1/8 X 2045 AXLE WITH NUT		02 02
02A	0571014259	2-1/8 X 2495 AXLE		02 02
03	0601039004	26" X 0.2" PLAIN DISC BLADE		18 22
04	0521041852	AGRICULTURAL BEARING	24	08 08
04.	0521041797	OIL BATH BEARING 450 X 2.1/8	25	08 08
05	0502012711	447 SPACER		06 10
06	0502010594	2-1/8" EXTERNAL AXLE WASHER		04 04
07	0502010595	2-1/8" INNER AXLE WASHER		04 04
08	0541010368	NUT LOCK		08 08
09	0501042139	1" X 4.3" ASSY BOLT		16 16
09A	0501010952	1" X 4.3" BOLT		16 16
09B	0501010951	1" SQUARE WASHER		16 16
09C	0541010210	FLAT WASHER		16 16
09D	0501010059	1.5/8 NUT		32 32
10	0503010232	5/8" X 1.3/4" BOLT		16 16
11	0503010027	5/8" SPRING WASHER		16 16
12	0503010013	5/8" NUT		16 16
13	0511047064	2-1/8" X 1580 AXLE		02 00
13A	0551017147	2-1/8" X 1580 AXLE		02 00

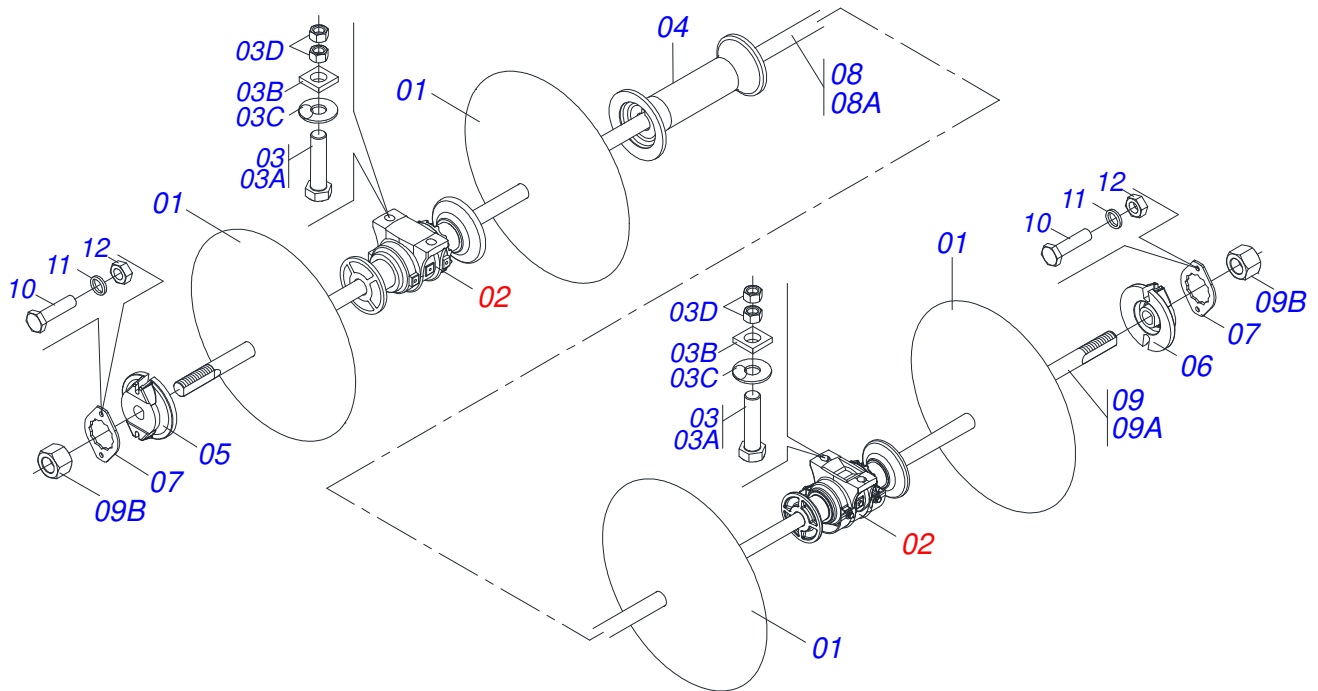


Item	Code	Description	See page	QT
01	0601039004	26" X 0.2" PLAIN DISC BLADE		18
02	0521041852	AGRICULTURAL BEARING	24	08
02.	0521041797	OIL BATH BEARING 450 X 2.1/8	25	08
03	0501042139	1" X 4.3" ASSY BOLT		16
03A	0501011547	1" X 4-1/2" BOLT		16
03B	0521012861	TENSIONER SUPPORT		16
03C	0541010210	FLAT WASHER		16
03D	0501010059	1.5/8 NUT		32
04	0502012711	447 SPACER		06
05	0502010594	2-1/8" EXTERNAL AXLE WASHER		04
06	0502010595	2-1/8" INNER AXLE WASHER		04
07	0541010368	NUT LOCK		08
08	0511047064	2-1/8" X 1580 AXLE		02
08A	0551017147	2-1/8" X 1580 AXLE		02
08B	0502040063	2.1/8" X 54 99 NUT		08
09	0511053649	2-1/8 X 2045 AXLE WITH NUT		02
09A	0571014259	2-1/8 X 2495 AXLE		02
10	0503010232	5/8" X 1.3/4" BOLT		16
11	0503010027	5/8" SPRING WASHER		16
12	0503010013	5/8" NUT		16
13	0511052146	2-1/8 X 2495 AXLE WITH NUT		02
13A	0571012019	2-1/8 X 2495 AXLE		02

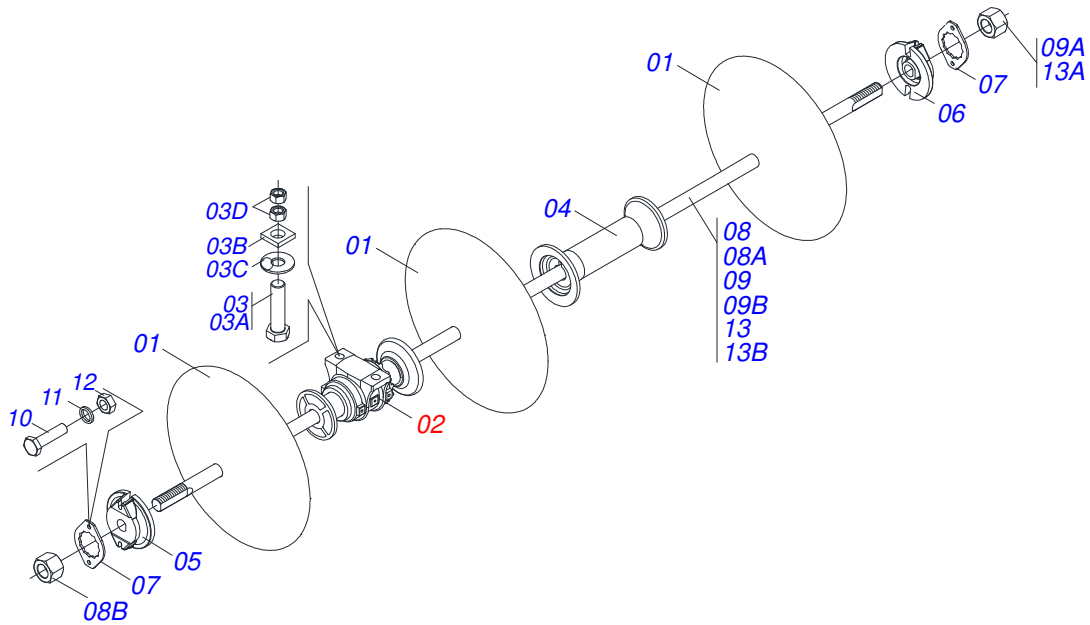


Item	Code	Description	See page	QT
01	0601039004	26" X 0.2" PLAIN DISC BLADE		22
02	0521041852	AGRICULTURAL BEARING	24	08
02.	0521041797	OIL BATH BEARING 450 X 2.1/8	25	08
03	0501042139	1" X 4.3" ASSY BOLT		16
03A	0501011547	1" X 4-1/2" BOLT		16
03B	0502012861	1" SQUARE WASHER		16
03C	0541010210	FLAT WASHER		16
03D	0501010059	1.5/8 NUT		32
04	0502012711	447 SPACER		10
05	0502010594	2-1/8" EXTERNAL AXLE WASHER		04
06	0502010595	2-1/8" INNER AXLE WASHER		04
07	0541010368	NUT LOCK		08
08	0511052146	2-1/8 X 2495 AXLE WITH NUT		02
08A	0571012019	2-1/8 X 2495 AXLE		02
08B	0502040063	2.1/8" X 54 99 NUT		08
09	0511053649	2-1/8 X 2045 AXLE WITH NUT		02
09A	0571014259	2-1/8 X 2495 AXLE		02
10	0503010232	5/8" X 1.3/4" BOLT		16
11	0503010027	5/8" SPRING WASHER		16
12	0503010013	5/8" NUT		16

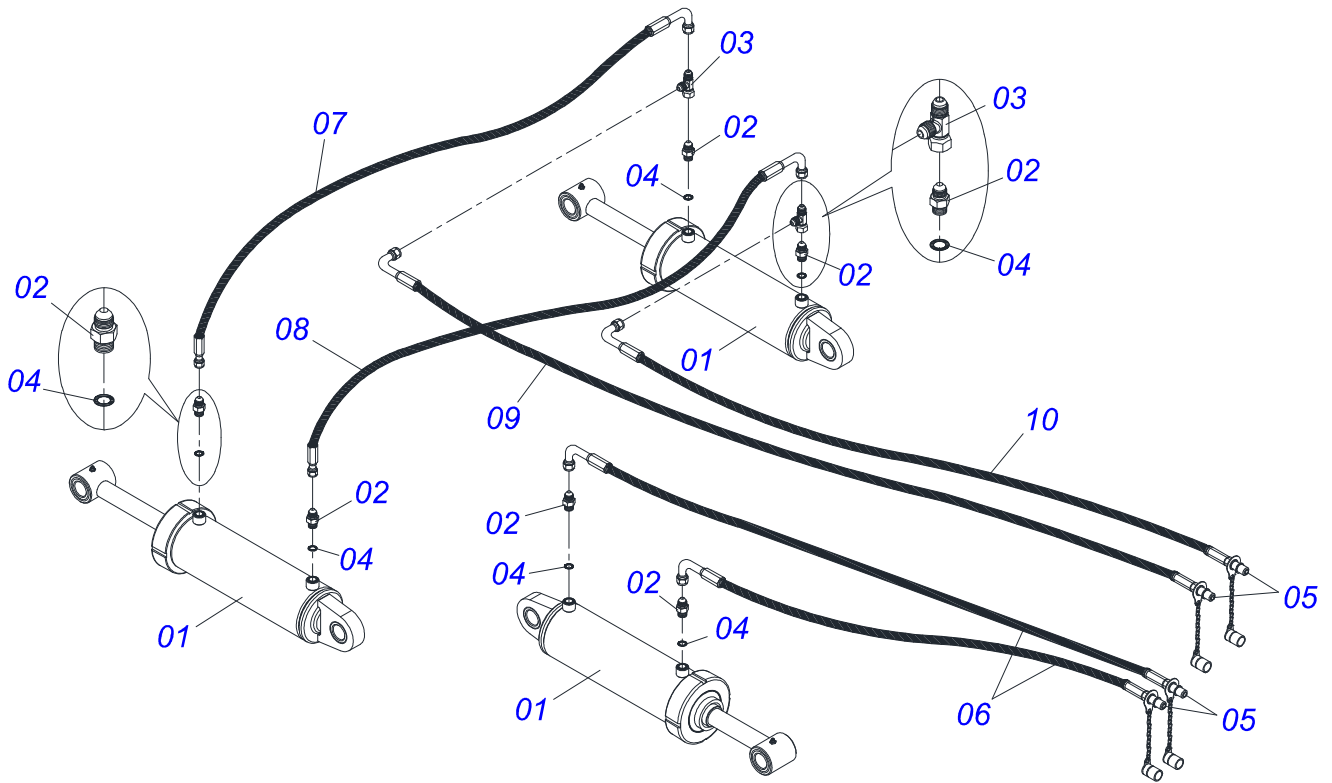




Item	Code	Description	See page	QT
01	0601039004	26" X 0.2" PLAIN DISC BLADE		18
02	0521041852	AGRICULTURAL BEARING	24	08
02.	0521041797	OIL BATH BEARING 450 X 2.1/8	25	08
03	0501042139	1" X 4.3" ASSY BOLT		16
03A	0501010952	1" X 4.3" BOLT		16
03B	0501010951	1" SQUARE WASHER		16
03C	0541010210	FLAT WASHER		16
03D	0501010059	1.5/8 NUT		32
04	0502012711	447 SPACER		06
05	0502010594	2-1/8" EXTERNAL AXLE WASHER		04
06	0502010595	2-1/8" INNER AXLE WASHER		04
07	0541010368	NUT LOCK		08
08	0511047064	2-1/8" X 1580 AXLE		02
08A	0551017147	2-1/8" X 1580 AXLE		02
08B	0502040063	2.1/8" X 54 99 NUT		08
09	0511053649	2-1/8 X 2045 AXLE WITH NUT		02
09A	0502040063	2.1/8" X 54 99 NUT		02
09B	0571014259	2-1/8 X 2495 AXLE		01
10	0503010232	5/8" X 1.3/4" BOLT		16
11	0503010027	5/8" SPRING WASHER		16
12	0503010013	5/8" NUT		16

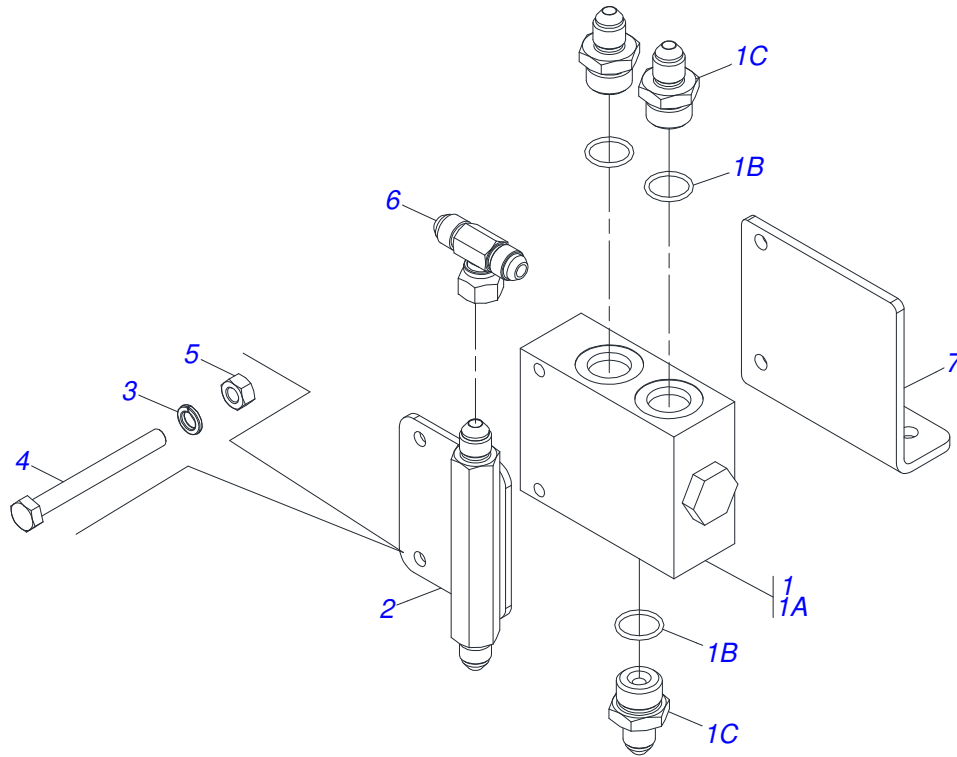


Item	Code	Description	See page	QT
01	0601039004	26" X 0.2" PLAIN DISC BLADE		30
02	0521041852	AGRICULTURAL BEARING	24	12
02.	0521041797	OIL BATH BEARING 450 X 2.1/8	25	12
03	0501042139	1" X 4.3" ASSY BOLT		24
03A	0501010952	1" X 4.3" BOLT		24
03B	0501010951	1" SQUARE WASHER		24
03C	0541010210	FLAT WASHER		24
03D	0501010059	1.5/8 NUT		48
04	0502012711	447 SPACER		12
05	0502010594	2-1/8" EXTERNAL AXLE WASHER		06
06	0502010595	2-1/8" INNER AXLE WASHER		06
07	0541010368	NUT LOCK		12
08	0511052146	2-1/8 X 2495 AXLE WITH NUT		02
08A	0571012019	2-1/8 X 2495 AXLE		02
08B	0502040063	2.1/8" X 54 99 NUT		12
09	0511053649	2-1/8 X 2045 AXLE WITH NUT		02
09A	0502040063	2.1/8" X 54 99 NUT		02
09B	0571014259	2-1/8 X 2495 AXLE		01
10	0503010232	5/8" X 1.3/4" BOLT		24
11	0503010027	5/8" SPRING WASHER		24
12	0503010013	5/8" NUT		24
13	0511047064	2-1/8" X 1580 AXLE		02
13A	0502040063	2.1/8" X 54 99 NUT		02
13B	0551017147	2-1/8" X 1580 AXLE		01

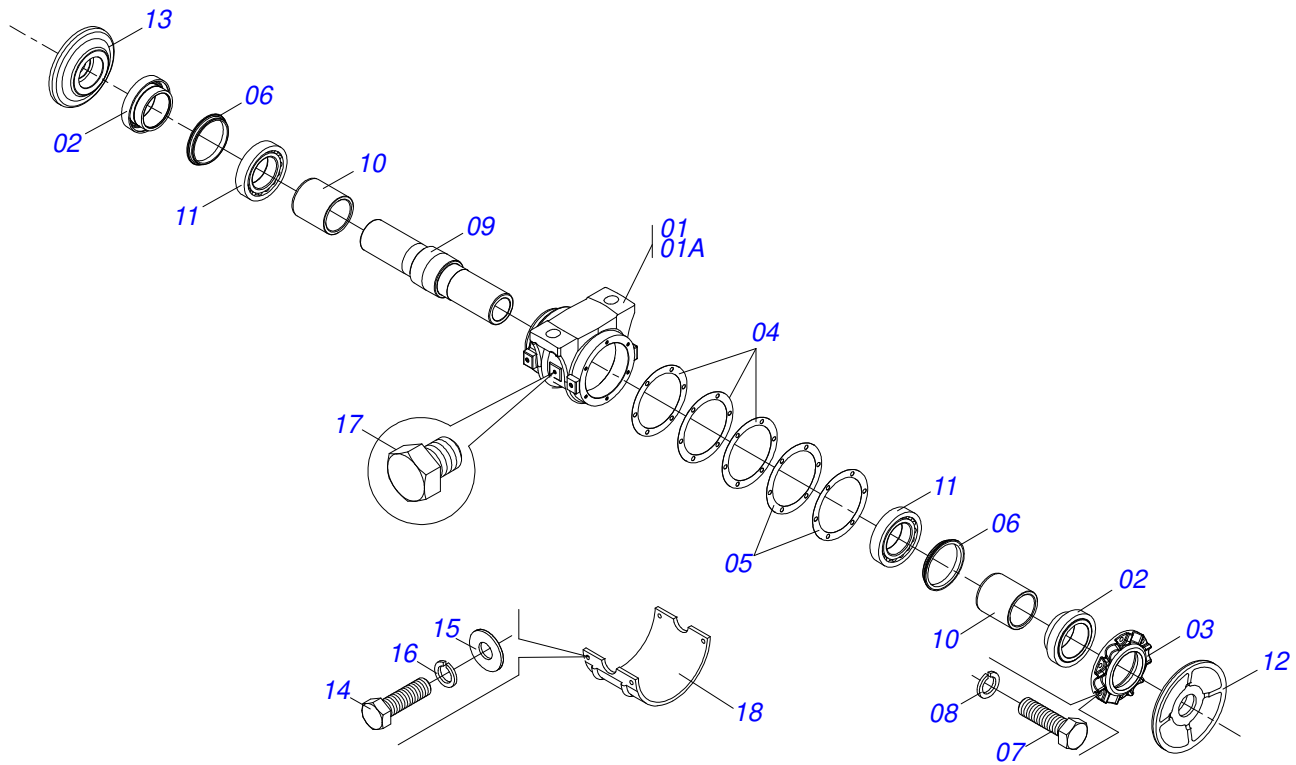


Item	Code	Description	See page	QT
01	0511049943	HYDRAULIC CYLINDER 53,98 X 127 X 640 X 300	11	03
02	0501010617	3/4" NIPPLE		06
03	0503011968	3/4" 8R6X-S T ADAPTER WITH SWIVEL NUT		02
04	0503010190	2-114 N 3006-9B O'RING		06
05	0501053834	MALE QUICK COUPLER WITH CAP - 1/2 NPT		04
06	0501080473	3/8" X 120" TC-TM HOSE		02
07	0501080359	3/8" X 78.7" TR-TC HOSE ASSY		01
08	0501080414	3/8" X 110.2" TR-TC HOSE ASSY		01
09	0501080781	TR-TM HOSE ASSY		01
10	0501080362	3/8" X 177" TC-TM HOSE		01

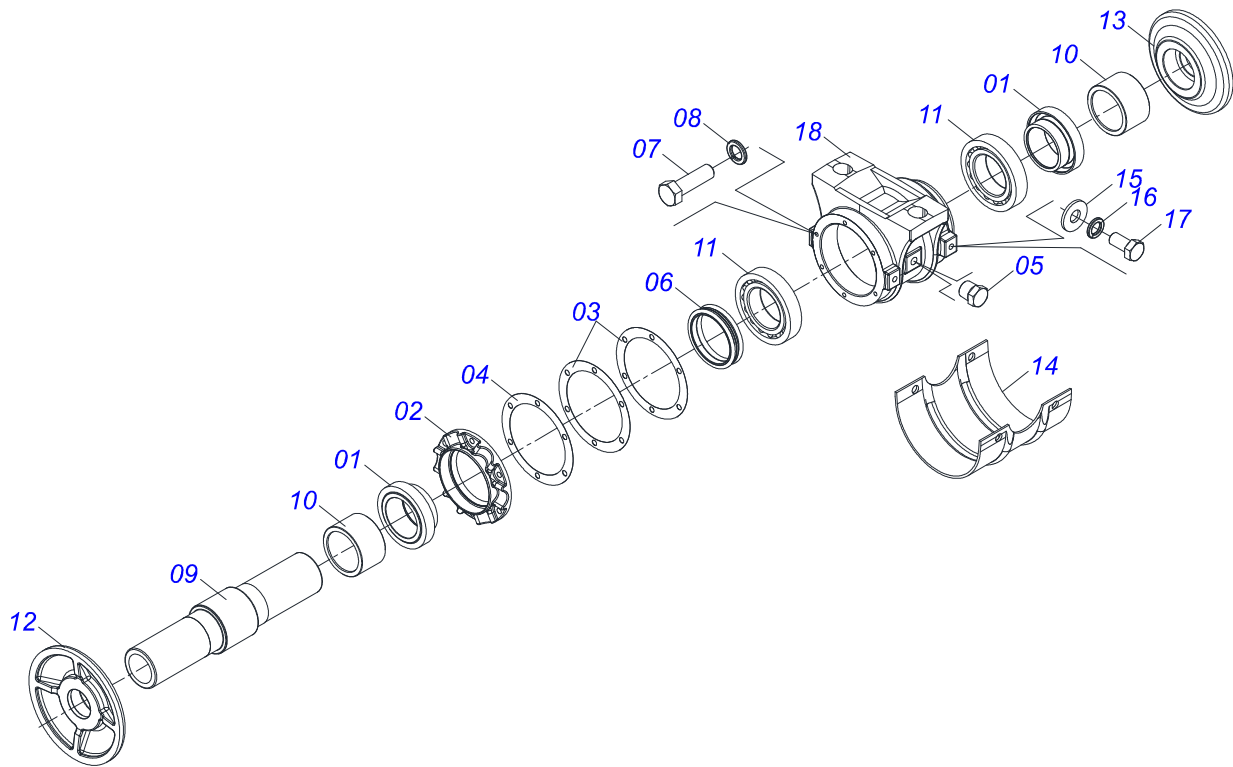




Item	Code	Description	See page	QT
01	0511057381	FLOW DIVIDING VALVE ASSY	01	
01A	0503016227	FLOW DIVIDING VALVE	01	
01B	0503011109	2-119 N 3006-9B O-RING	03	
01C	0521014704	HOSE NIPPLE 3/4 UNF	03	
02	0521066121	OIL TUBE	01	
03	0503010179	5/16" ZN SPRING WASHER	02	
04	0503011053	5/16" X 3" C S 6.5 ZN BOLT	02	
05	0503010337	5/16" NUT	02	
06	0503037376	3/4" T ADAPTER WITH SWIVEL NUT	01	
07	0571019627	SUPPORT VALVE	01	



Item	Code	Description	See page	QT
01	0521041797	OIL BATH BEARING 450 X 2.1/8	25	01
01A	0502012262	HOUSING DM		01
02	0502040123	SEAL RETAINER		02
03	0502010645	HOUSING CAP DM		01
04	0503030536	7.1" X 5.5" X 0.01" JOINT		03
05	0503030686	7.1" X 5.5" X 0.004" JOINT		02
06	0503030028	JB-257 SEAL		02
07	0503010751	C3/8" X 1.1/4" HEX BOLT G.5		06
08	0503011443	3/8" SPRING WASHER		06
09	0502012712	AXLE BEARING		01
10	0571013127	SPACER SLEEVE		02
11	0503010117	32216 ROLLER BEARING		02
12	0502040260	OUTER FLANGE		01
13	0502040261	INNER FLANGE		01
14	0503011401	1/2" X 3/4" BOLT		04
15	0511017302	FLAT WASHER		04
16	0503010019	1/2" SPRING WASHER		04
17	0503010856	OIL PLUG		02
18	0511013169	PROTECTION COVER BEARING		01



Item	Code	Description	See page	QT
01	0502040123	SEAL RETAINER		02
02	0502010645	HOUSING CAP DM		01
03	0503030536	7.1" X 5.5" X 0.01" JOINT		02
04	0503030686	7.1" X 5.5" X 0.004" JOINT		01
05	0503010856	OIL PLUG		02
06	0503030028	JB-257 SEAL		02
07	0503010751	C3/8" X 1.1/4" HEX BOLT G.5		06
08	0503011443	3/8" SPRING WASHER		06
09	0502012712	AXLE BEARING		01
10	0571013127	SPACER SLEEVE		02
11	0503010117	32216 ROLLER BEARING		02
12	0502040260	OUTER FLANGE		01
13	0502040261	INNER FLANGE		01
14	0511013169	PROTECTION COVER BEARING		01
15	0511017302	FLAT WASHER		04
16	0503010019	1/2" SPRING WASHER		04
17	0503010834	1/2 X 1 BOLT		04
18	0502010742	HOUSING DM		01







***civemasa***

**Technical Publications | Elaboration and Revision**

JOSÉ DOMINGOS GASPARI

[www.civemasa.com.br](http://www.civemasa.com.br)

