

DISK HARROWS

SGIC 16 TO 28 DISCS

Code: 0501091094
Series: S-1297
Revision: 00
Revision Date: FEVEREIRO/2023

PARTS CATALOGUE

CIVEMASA

PRODUCTS

Code	Description
0120160090	SGIC 16 28X7,5 DR 11L-15 S-1297
0120160055	SGIC 16 28X7,5 DR 7,5X16 S-1297
0120160089	SGIC 16 26X6,0DR 11L15 6592492 1297
0120160059	SGIC 16 28X6,0 DR 7,5X16 S-1297
0120160121	SGIC 16 30X7,5DR 11L-15 S-1297
0120160120	SGIC 16 30X7,5DR 7,5X16 S-1297
0120160081	SGIC 18 28X7,5DR 11L15 6592199 1297
0120160122	SGIC 18 28X7,5DR 7,5X16 S-1297
0120160124	SGIC 18 30X7,5DR 11L15 S-1297
0120160123	SGIC 18 30X7,5DR 7,5X16 S-1297
0120160092	SGIC 20 28X7,5DR 11L15 6592529 1297
0120160045	SGIC 20 28X7,5DR 7,5X16 S-1297
0120160126	SGIC 20 30X7,5DR 11L15 S-1297
0120160125	SGIC 20 30X7,5DR 7,5X16 S-1297
0120160088	SGIC 22 28X7,5DR 11L15 6592474 1297
0120160127	SGIC 22 28X7,5DR 7,5X16 S-1297
0120160129	SGIC 22 30X7,5DR 11L15 S-1297
0120160128	SGIC 22 30X7,5DR 7,5X16 S-1297
0120160051	SGIC 24 28X6,0DR 7,5X 16 S-1297
0120160044	SGIC 24 28X7,50DR 7,5 X 16 S-1297
0120160054	SGIC 24 28X7,5DR 11L15 6591915 1297
0120160132	SGIC 24 28X7,5DR 400/60 S-0114
0120160130	SGIC 24 30X7,5DR 7,5 X 16 S-1297
0120160131	SGIC 24 30X7,5DR 11L15 S-1297
0120160133	SGIC 24 30X7,5DR 400/60 S-0114
0120160104	SGIC 24TR 26X6,0 DR 400/60 S-1297
0120160105	SGIC 24TR 28X6,0 DR 400/60 S-1297
0120160103	SGIC 24TR 28X7,5 DR 400/60 S-1297
0120160134	SGIC 24TR 30X7,5DR 400/60 S-1297
0120160117	SGIC 26 28X6,0DR 11L15 6592566 1297

ATTENTION: IMPORTANT

CIVEMASA reserves the right to improve and/or modify the technical features of its products, without obligation to do the same with those products already sold and without prior knowledge of the dealer or the customer. The photos are only illustrative.

PRODUCTS

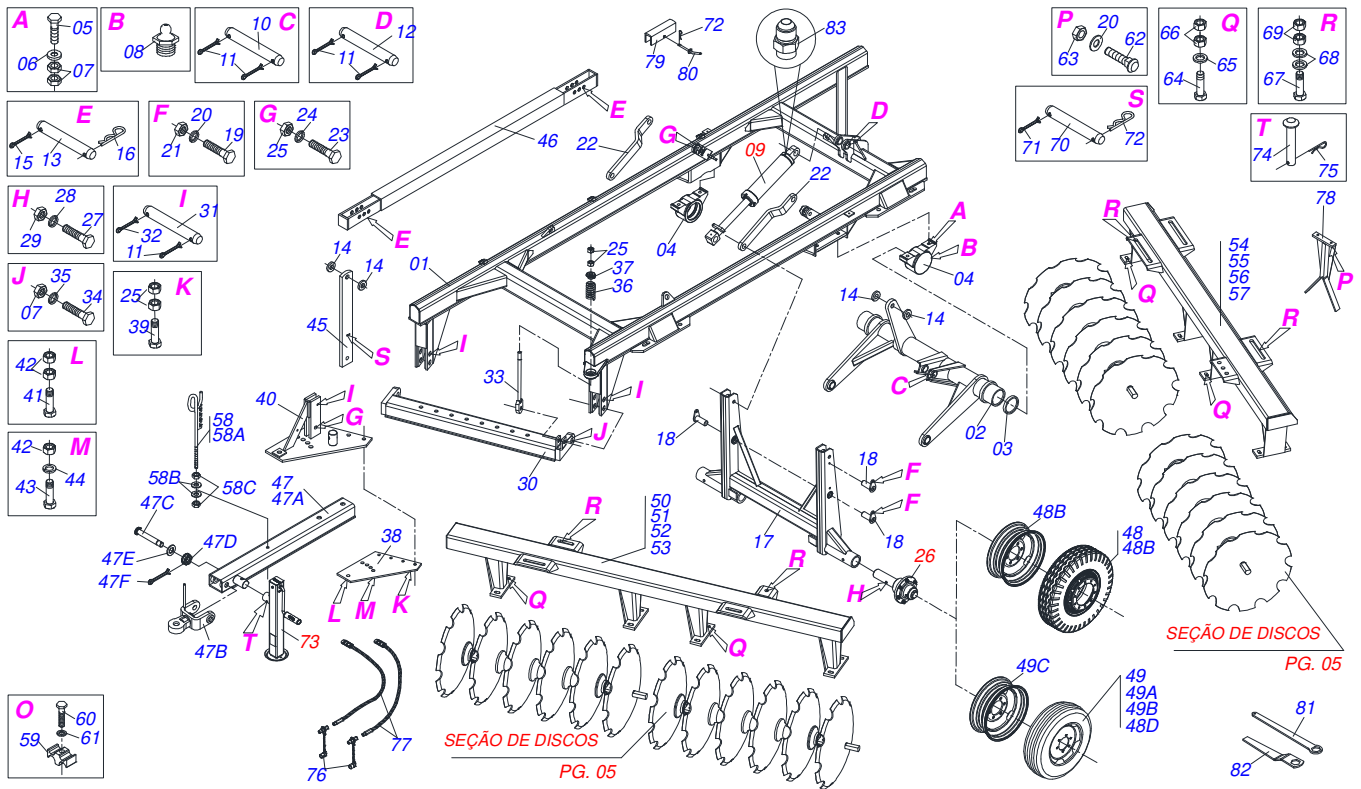
0120160056	SGIC 26 28X7,5DR 11L15 6591933 1297
0120160137	SGIC 26 28X7,5DR 400/60 S-0114
0120160135	SGIC 26 28X7,5DR 7,5X16 S-1297
0120160119	SGIC 26 30X7,5DR 11L-15 S-1297
0120160138	SGIC 26 30X7,5DR 400/60 S-0114
0120160136	SGIC 26 30X7,5DR 7,5X16 S-1297
0120160080	SGIC 26CX26X6,0R DE 6592180 S-1297
0120160139	SGIC 26TR 28X7,5DR 400/60 S-1297
0120160140	SGIC 26TR 30X7,5DR 400/60 S-1297
0120160141	SGIC 28 30X7,5DR 7,5X16 S-1297
0120160078	SGIC 28 28X6,0DR 11L15 6592153 1297
0120160052	SGIC 28 28X7,5DR 11L15 6591924 1297
0120160142	SGIC 28 28X7,5DR 400/60 S-0114
0120160047	SGIC 28 28X7,5DR 7,5X16 S-1297
0120160143	SGIC 28 30X7,5DR 400/60 S-0114
0120160086	SGIC 28 30X7,5R 11L15 6592465 1297
0120160098	SGIC 28TR 26X6,0 DR 400/60 S-1297
0120160099	SGIC 28TR 28X6,0 DR 400/60 S-1297
0120160095	SGIC 28TR 28X7,5 DR 400/60 S-1297
0120160144	SGIC 28TR 30X7,5DR 400/60 S-1297
0120160053	SGIC 30 28X7,5 DR 7,5X16 S-1297
0120160147	SGIC 30 28X7,5DR 400/60 S-0114
0120160073	SGIC 30 28X7,5DR 11L15 6592108 1297
0120160146	SGIC 30 30X7,5DR 11L15 S-1297
0120160148	SGIC 30 30X7,5DR 400/60 S-0114
0120160145	SGIC 30 30X7,5DR 7,5X16 S-1297
0120160097	SGIC 30TR 26X6,0 DR 400/60 S-1297
0120160096	SGIC 30TR 28X6,0 DR 400/60 S-1297
0120160094	SGIC 30TR 28X7,5 DR 400/60 S-1297
0120160149	SGIC 30TR 30X7,5DR 400/60 S-1297

ATTENTION: IMPORTANT

CIVEMASA reserves the right to improve and/or modify the technical features of its products, without obligation to do the same with those products already sold and without prior knowledge of the dealer or the customer. The photos are only illustrative.

INDEX

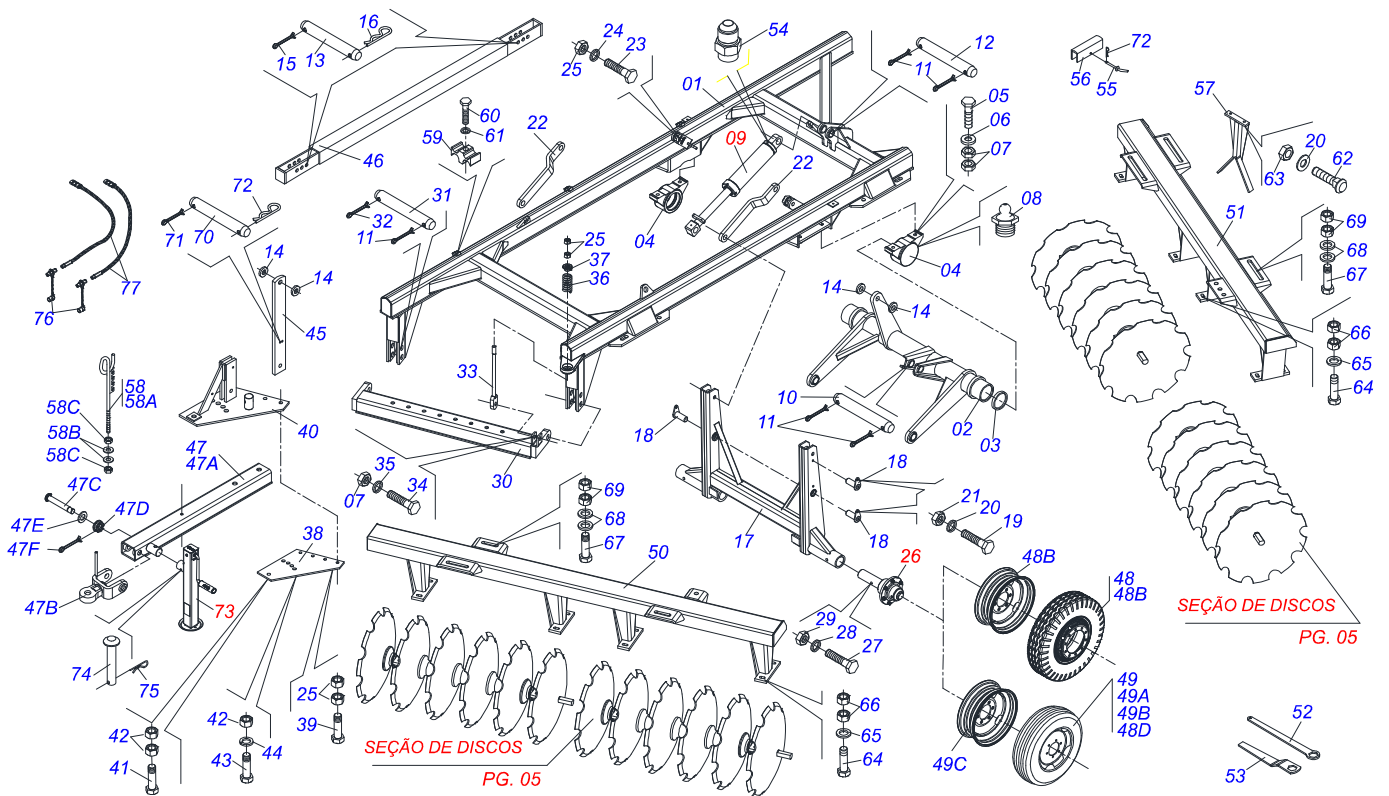
0909090603	SGIC ASSY 16 18 20 22 DISCS	1
0909099202	SGIC COMPLETO 28 DISCOS	2
0501048562	HYDRAULIC CYLINDER 53,98X101,6X630X300	3
0511048088	DRAWBAR JACK	4
0501054685	WHEELS HUB ASSY	5
0909090604	GANG DISC	6
0511040113	AGRICULTURAL BEARING	7



Item	Code	Description	See page	16	18	20	22
01	0511064756	FRAME		01	01	01	01
02	0511060191	WHEEL AXLE		01	01	01	01
03	0503012223	FELT RING		02	02	02	02
04	0502011583	BEARING AXLE		02	02	02	02
05	0503010901	3/4UNC 3.1/2 BOLT		04	04	04	04
06	0521013710	WASHER SEMIMAN		04	04	04	04
07	0503012183	SNC 3/4" ZIN 1K03097 NUT		10	10	10	10
08	0503010002	1800 GREASE FITTING		02	02	02	02
09	0501048562	HYDRAULIC CYLINDER 53,98X101,6X630X300	3	01	01	01	01
10	0521013707	HEADLESS PIN		01	01	01	01
11	0503010010	1/4" X 2.1/2" COTTERPIN		06	06	06	06
12	0521013706	HEADLESS PIN		01	01	01	01
13	0521013703	PIN FREE HEAR		02	02	02	02
14	0521015518	BOOST		04	04	04	04
15	0503010038	3/16 X 2 COTTERPIN		02	02	02	02
16	0503031470	TM 251 X 4,0 STAPLE		02	02	02	02
17	0511060142	160303D 3591977 HUB AND SPINDLE ASSY		01	01	01	01
18	0511064466	PIN LOCK		04	04	04	04
19	0503010920	1/2 UNC X 1.1/2 C S G.5 ZN BOLT		04	04	04	04
20	0503010019	1/2" SPRING WASHER		48	48	50	52
21	0503010060	1/2 UNC G.5 ZN HEX NUT		04	04	04	04
22	0511063681	ARM		02	02	02	02
23	0503011432	BOLT		03	03	03	03
24	0503010012	1" SPRING WASHER		05	05	05	05
25	0503012182	1" NUT		03	03	03	03
26	0501054685	WHEELS HUB ASSY	5	02	02	02	02
27	0501010163	5/8" X 4-1/2" BOLT		02	02	02	02
28	0503010027	5/8 SPRING WASHER		02	02	02	02
29	0503010013	5/8 NUT		02	02	02	02
30	0511060115	DRAWBAR		01	01	01	01
31	0521013704	PIN FREE HEAR		02	02	02	02

Item	Code	Description	See page	16	18	20	22
32	0503031479	STAPLE		02	02	02	02
33	0511060124	ASSEMBLY TIME		01	01	01	01
34	0501010125	3/4" X 2-1/2" BOLT		01	01	01	01
35	0503010023	3/4" SPRING WASHER		01	01	01	01
36	0503031460	SPRING		01	01	01	01
37	0502011582	SPINDLE GUIDE		01	01	01	01
38	0511060126	TOP PLATE HITCH		01	01	01	01
39	0501010219	1" X 7-1/2" BOLT		04	04	04	04
40	0511060126	TOP PLATE HITCH		01	01	01	01
41	0503012174	1-1/4" X 8-1/4" BOLT		01	01	01	01
42	0503012181	1.1/4" NUT		02	02	02	02
43	0503012192	1-1/4" X 8 BOLT		01	01	01	01
44	0503010070	SPRING WASHER		01	01	01	01
45	0521013673	TOWER		01	01	01	01
46	0511060127	BEAM STABILIZER		01	01	01	01
47	0511050170	HARNES ASSY		01	01	01	01
47A	0511060119	HARNES		01	01	01	01
47B	0521062956	HITCH		01	01	01	01
47C	0561018588	COUPLING SHAFT		01	01	01	01
47D	0501011301	1.1/2 UNC 6FPP 2.5/16 NUT		01	01	01	01
47E	0501012916	FLAT WASHER 40 X 66 X 4,75 ZN		01	01	01	01
47F	0503010010	1/4" X 2.1/2" COTTERPIN		01	01	01	01
48	0503061864	WHEEL SET		02	02	02	02
48A	0503010860	AIR CHAMBER 11L 15		02	02	02	02
48B	0511064777	CR 30M/2-L15 WHEEL		02	02	02	02
49	0503060608	WHEEL SET		02	02	02	02
49A	0503012300	TIRE 10L		02	02	02	02
49B	0503010471	0.3" X 0.6" PROTECTION		02	02	02	02
49C	0501061845	0.2"X0.6"X5.1"X6F0.6"X6.8"-D WHEEL		02	02	02	02
49D	0503012299	7.50 X 16 INNER TIRE		02	02	02	02
50	0511060478	FRONT FRAME ASSY - 16		01	00	00	00
51	0511060237	FRONT FRAME ASSY - 18		00	01	00	00
52	0511060112	FRONT FRAME ASSY - 20		00	00	01	00
53	0511060506	FRONT FRAME		00	00	00	01
54	0511060479	REAR FRAME ASSY - 16		01	00	00	00
55	0511060238	REAR FRAME ASSY - 18		00	01	00	00
56	0511060113	REAR FRAME ASSY - 20		00	00	01	00
57	0511060507	REAR FRAME		00	00	00	01
58	0501040257	3/4 X 1200 HOSE HOLDER A		01	01	01	01
58A	0511067334	HOSE SUPPORT		01	01	01	01
58B	0501010322	FLAT WASHER		02	02	02	02
58C	0503010014	3/4" HEX NUT		02	02	02	02
59	0502012702	BODY SUPPORT CLAMP		03	03	03	03
60	0503012555	SCREW 7/16 UNC X 2 CS RT G.7 ZN		03	03	03	03
61	0503010180	7/16" SPRING WASHER		03	03	03	03
62	0501010243	1/2" X 1-1/2" BOLT		28	28	30	32
63	0503010020	1/2"NUT		28	28	30	32
64	0503010901	3/4UNC 3.1/2 BOLT		16	16	16	16
65	0521013710	WASHER SEMIMAN		16	16	16	16
66	0503012183	SNC 3/4" ZIN 1K03097 NUT		32	32	32	32
67	0503011432	BOLT		08	08	08	08
68	0521015523	BOOST		16	16	16	16
69	0503012182	1" NUT		16	16	16	16
70	0521013812	PIN FREE HEAD		01	01	01	01
71	0503010362	1/8 X 1.1/4 COTTERPIN		01	01	01	01
72	0503031464	TM 211 X 3,0 STAPLE		02	02	02	02
73	0511048088	DRAWBAR JACK	4	01	01	01	01
74	0561014251	COUPLING SHAFT		01	01	01	01
75	0503030012	HITCH PIN CLIP		01	01	01	01

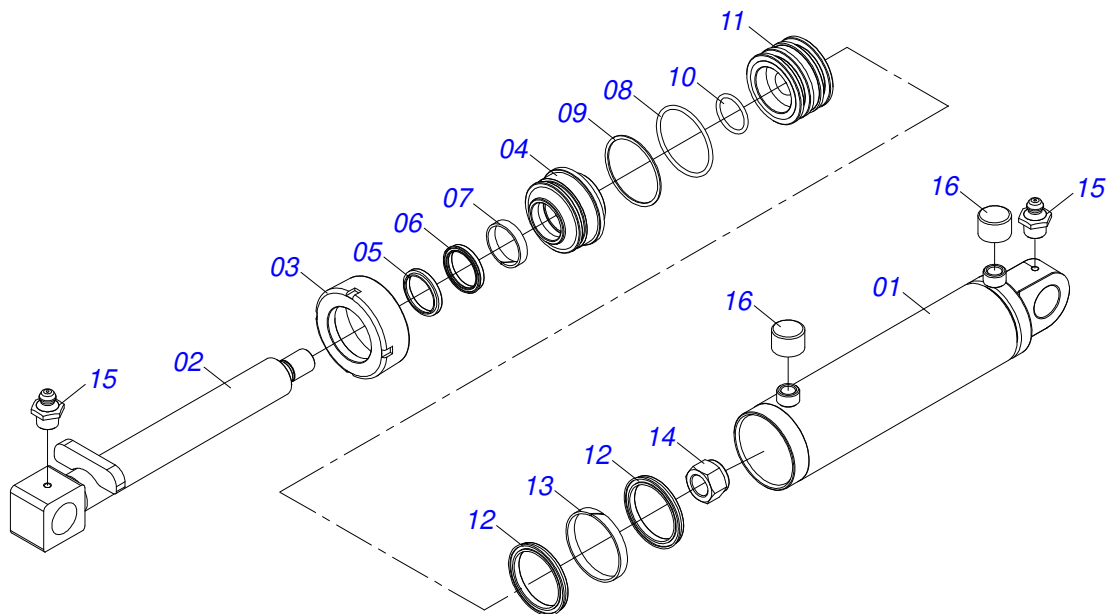
Item	Code	Description	See page	16	18	20	22
76	0501053834	MALE QUICK COUPLER		02	02	02	02
77	0501080640	3/8 X 7200 TC-TM HOSE		02	02	02	02
78	0511060122	SAC 31000 SCRAPER		10	10	12	14
79	0591019958	LOCK FOR TRANSPORTATION		01	01	01	01
80	0511060137	ASSEMBLY LOCK PIN		01	01	01	01
81	0531013656	WRENGH		01	01	01	01
82	0501011431	1-3/4" GANG BOLT WRENCH		02	02	02	02
83	0551012528	ADAPTER (GND)		02	02	02	02



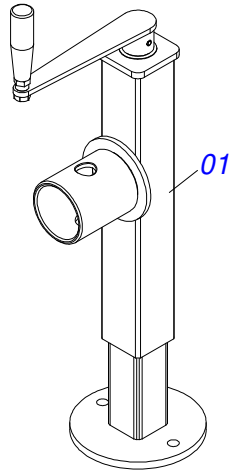
Item	Code	Description	See page	28
01	0511064731	FRAME	01	
02	0511060132	WHEEL AXLE	01	
03	0503012223	FELT RING	02	
04	0502011587	BEARING AXLE	02	
05	0503010797	3/4" X 4" BOLT	04	
06	0521013710	WASHER SEMIMAN	04	
07	0503012183	SNC 3/4" ZIN 1K03097 NUT	10	
08	0503010002	1800 GREASE FITTING	02	
09	0501048562	HYDRAULIC CYLINDER 53,98X101,6X630X300	3	01
10	0521013707	HEADLESS PIN	01	
11	0503010010	1/4" X 2.1/2" COTTERPIN	06	
12	0521013706	HEADLESS PIN	01	
13	0521013703	PIN FREE HEAR	02	
14	0521015518	BOOST	04	
15	0503010038	3/16 X 2 COTTERPIN	02	
16	0503031470	TM 251 X 4,0 STAPLE	02	
17	0511060120	RODE SET	01	
18	0511064466	PIN LOCK	04	
19	0503010920	1/2 UNC X 1.1/2 C S G.5 ZN BOLT	04	
20	0503010019	1/2" SPRING WASHER	48	
21	0503010060	1/2 UNC G.5 ZN HEX NUT	04	
22	0511063681	ARM	02	
23	0503011432	BOLT	03	
24	0503010012	1" SPRING WASHER	05	
25	0503012182	1" NUT	03	
26	0501054654	WHEEL HUB CR 70M	02	
27	0501010163	5/8" X 4-1/2" BOLT	02	
28	0503010027	5/8 SPRING WASHER	02	
29	0503010013	5/8 NUT	02	
30	0511060115	DRAWBAR	01	
31	0521013704	PIN FREE HEAR	02	

Item	Code	Description	See page	28
32	0503031479	STAPLE		02
33	0511060124	ASSEMBLY TIME		01
34	0501010125	3/4" X 2-1/2" BOLT		01
35	0503010023	3/4" SPRING WASHER		01
36	0503031460	SPRING		01
37	0502011582	SPINDLE GUIDE		01
38	0511060125	BOTTOM PLATE HITCH		01
39	0501010219	1" X 7-1/2" BOLT		04
40	0511060126	TOP PLATE HITCH		01
41	0503012174	1-1/4" X 8-1/4" BOLT		01
42	0503012181	1.1/4" NUT		02
43	0503012192	1-1/4" X 8 BOLT		01
44	0503010070	SPRING WASHER		01
45	0521013673	TOWER		01
46	0511060127	BEAM STABILIZER		01
47	0511050170	HARNES ASSY		01
47A	0511060119	HARNES		01
47B	0521062956	HITCH		01
47C	0561018588	COUPLING SHAFT		01
47D	0501011301	1.1/2 UNC 6FPP 2.5/16 NUT		01
47E	0501012916	FLAT WASHER 40 X 66 X 4,75 ZN		01
47F	0503010010	1/4" X 2.1/2" COTTERPIN		01
48	0503061864	WHEEL SET		02
48A	0503010860	AIR CHAMBER 11L 15		02
48B	0511064777	CR 30M/2-L15 WHEEL		02
49	0503060608	WHEEL SET		02
49A	0503012300	TIRE 10L		02
49B	0503010471	0.3" X 0.6" PROTECTION		02
49C	0501061845	0.2"X0.6"X5.1"X6F0.6"X6.8"-D WHEEL		02
49D	0503012299	7.50 X 16 INNER TIRE		02
50	0511060481	FRONT FRAME ASSY - 28		01
51	0511060482	REAR FRAME ASSY - 28		01
52	0531013656	WRENCH		01
53	0501011431	1-3/4" GANG BOLT WRENCH		02
54	0551012528	ADAPTER (GND)		02
55	0511060137	ASSEMBLY LOCK PIN		01
56	0591019958	LOCK FOR TRANSPORTATION		01
57	0511060122	SAC 31000 SCRAPER		20
58	0501040257	3/4 X 1200 HOSE HOLDER A		01
58A	0511067334	HOSE SUPPORT		01
58B	0501010322	FLAT WASHER		02
58C	0503010014	3/4" HEX NUT		02
59	0502012702	BODY SUPPORT CLAMP		03
60	0503012555	SCREW 7/16 UNC X 2 CS RT G.7 ZN		03
61	0503010180	7/16" SPRING WASHER		03
62	0501010243	1/2" X 1-1/2" BOLT		40
63	0503010020	1/2"NUT		40
64	0503010901	3/4UNC 3.1/2 BOLT		20
65	0521013710	WASHER SEMIMAN		20
66	0503012183	SNC 3/4" ZIN 1K03097 NUT		40
67	0503011432	BOLT		08
68	0521015523	BOOST		20
69	0503012182	1" NUT		20
70	0521013812	PIN FREE HEAD		01
71	0503010362	1/8 X 1.1/4 COTTERPIN		01
72	0503031464	TM 211 X 3,0 STAPLE		02
73	0511048088	DRAWBAR JACK	4	01
74	0561014251	COUPLING SHAFT		01
75	0503030012	HITCH PIN CLIP		01

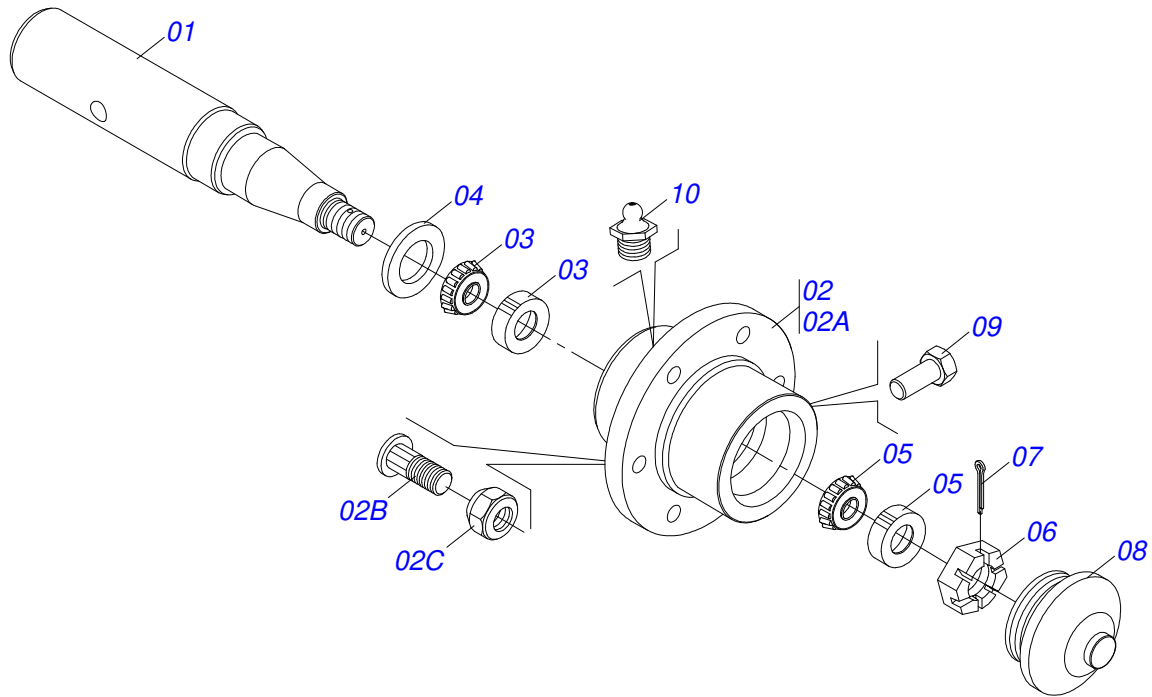
Item	Code	Description	See page	28
76	0501053834	MALE QUICK COUPLER		02
77	0501080640	3/8 X 7200 TC-TM HOSE		02



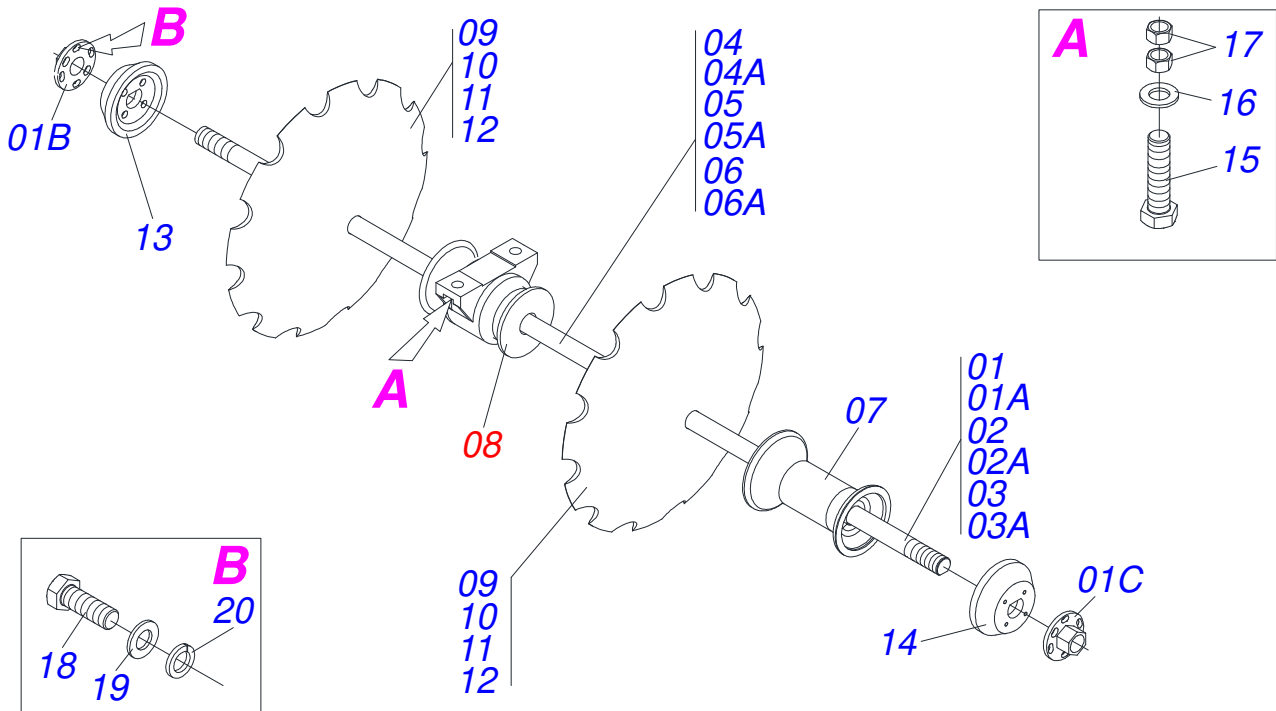
Item	Code	Description	See page	QT
01	0511062252	101,6 X 418 CYLINDER CASE		01
02	0511062250	53,98 X 509 TURNBUCLE		01
03	0502010017	4" HEAD		01
04	0502011250	RING OF SUPPORT		01
05	0503010319	D-2125 SCRAPER		01
06	0503010314	GASKET		01
07	0503010973	W2-2500-500 PK O'RING G.E		01
08	0503011061	8-342 BACK-UP RING		01
09	0503010338	2-342 N 3006-9B O'RING		01
10	0503010345	2-218 N 3006-9B O'RING		01
11	0502011969	53,98 X 101,60 PISTON		01
12	0503010043	PACKING 3750-3250		02
13	0503010994	W2-4000-500 PK RING G.E		01
14	0503010817	1.1/4" SELF LOCKING NUT		01
15	0503010002	1800 GREASE FITTING		02
16	0503030384	CON PLUG N-001		02



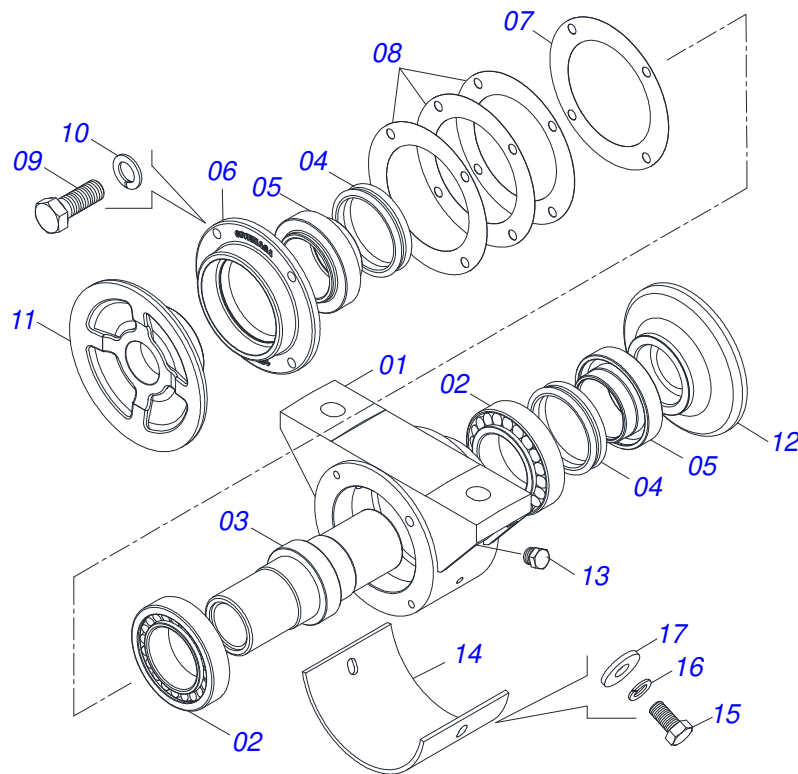
Item	Code	Description	See page	QT
01	0503062227	DRAWBAR JACK		01



Item	Code	Description	See page	QT
01	0531019478	CR 30M/1 AXLE		01
02	0501110768	HUB CARRYING WHEELS WITH BOLT		01
02A	0502011389	BOX		01
02B	0501010186	WHEEL SCREW 5/8UNF X 2.1/8CR		06
02C	0503010064	5/8 UNF CONIC NUT		06
03	0503010005	32212 ROLLER BEARING		01
04	0503010009	RETAINER 00573-B		01
05	0503010006	32210 ROLLER BEARING		01
06	0501010888	1.3/4" 2.5/16" CASTLE NUT		01
07	0503010010	1/4" X 2.1/2" COTTERPIN		01
08	0502020593	COVER		01
09	0503010295	SCREW 5/16 UNC X 5/8 CS G.2 ZN		01
10	0503010002	1800 GREASE FITTING		01



Item	Code	Description	See page	16	18	20	22	24	26	28	30
01	0511050238	AXLE DISC		02	00	00	00	00	00	00	02
01A	0521013844	AXLE DISC		02	00	00	00	00	00	00	02
01B	0502011574	RIGHT NUT		02	04	04	04	04	04	04	04
01C	0502011575	LEFT NUT		02	04	04	04	04	04	04	04
02	0511050335	AXLE DISC		00	02	00	00	00	00	00	00
02A	0521013820	AXLE DISC		00	02	00	00	00	00	00	00
03	0511050285	AXLE DISC		00	02	04	02	00	00	00	00
03A	0521013684	AXLE DISC		00	02	04	02	00	00	00	00
04	0511050216	1.3/4UNC X 1567 AXLE ASSY		00	00	00	02	04	02	00	00
04A	0521013681	AXLE		00	00	00	02	04	02	00	00
05	0511050175	1.3/4 UNC X 1837 AXLE DISC ASSY		00	00	00	00	00	00	04	02
05A	0521013682	AXLE		00	00	00	00	00	00	04	02
06	0511050264	DISC AXLE WITH NUT		00	00	00	00	00	02	00	00
06A	0521013682	AXLE		00	00	00	00	00	02	00	00
07	0502011576	3390172 SPACER		08	06	08	10	12	14	16	16
08	0511040113	AGRICULTURAL BEARING	7	06	08	08	08	08	08	08	10
09	0602037001	28" X 7,5MM NOTCHED DISC BLADE		16	18	20	22	24	26	28	30
10	0602040041	30X7,5 C105AF04FR1.13/16 10R T/CV NOTCHED DISC		16	18	20	22	24	26	28	30
11	0602039003	28X6 C102AF04FR1.13/16 10R TAT/CV NOTCHED DISC BLADE		16	00	00	00	24	26	28	30
12	0602033006	26" X 0.2" NOTCHED DISC BLADE		16	00	00	00	24	00	00	00
13	0502011572	BEARING INNER FLANGE		02	04	04	04	04	04	04	04
14	0502011573	OUTER FLANGE		02	04	04	04	04	04	04	04
15	0503010901	3/4UNC 3.1/2 BOLT		12	16	16	16	16	16	16	20
16	0521013710	WASHER SEMIMAN		12	16	16	16	16	16	16	20
17	0503012183	SNC 3/4" ZIN 1K03097 NUT		24	32	32	32	32	32	32	40
18	0503010834	1/2 X 1 BOLT		08	16	16	16	16	16	16	16
19	0501010937	13,50 X 28 X 3,00 FLAT WASHER		08	16	16	16	16	16	16	16
20	0503010019	1/2" SPRING WASHER		08	16	16	16	16	16	16	16



Item	Code	Description	See page	QT
01	0502011965	BEARIN BODY	01	
02	0503010104	3984/3920 ROLLER BEARING	02	
03	0502010824	AXLE CM/DM	01	
04	0503030027	DUO-CONE SEAL	02	
05	0502010823	SEAL RETAINER	02	
06	0502011966	BEARING COVER	01	
07	0503031685	JOINT BEARIN	01	
08	0503031686	JOINT BEARIN	03	
09	0503010237	3/8" X 1" BOLT	04	
10	0503011443	3/8" SPRING WASHER	04	
11	0502040141	OUTER FLANGE	01	
12	0502040142	INNER FLANGE	01	
13	0503010856	OIL PLUG	01	
14	0521013856	PLATE PROTECTION	01	
15	0503011334	BOLT 3/8 UNC X 3/4 CS G.5 ZN	02	
16	0503010025	3/8 SPRING WASHER	02	
17	0501010984	10,50 X 27 X 3,00 FLAT WASHER	02	



civemasa

Technical Publications | Elaboration and Revision
ALESSANDRA PATRICIA KAWAHARA CARRILI

www.civemasa.com.br

